

# GMC 500 - 1500 UPC FOR UPC/IAPMO INSTALLATIONS GMC 750, 1000, 1250 FL FOR FLORIDA INSTALLATIONS INSTALLATION PROCEDURE

## NOTES:

1. REFER TO INSTALLATION PROCEDURE AND INSTALLATION CHECKLIST.
2. PROCEPTOR SEPARATORS MUST BE INSTALLED IN ACCORDANCE WITH ALL RELEVANT FEDERAL, PROVINCIAL/STATE, AND LOCAL CODES INCLUDING LOCAL PLUMBING CODE.
3. US PATENT # 5,746,912; CDN PATENT # 2,195,822

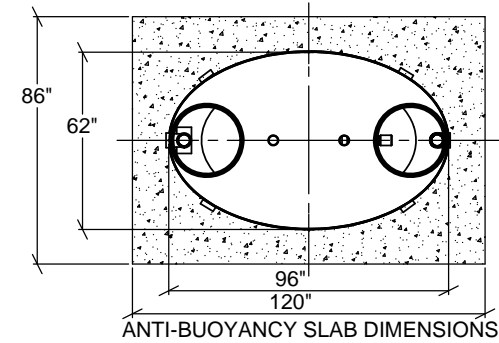
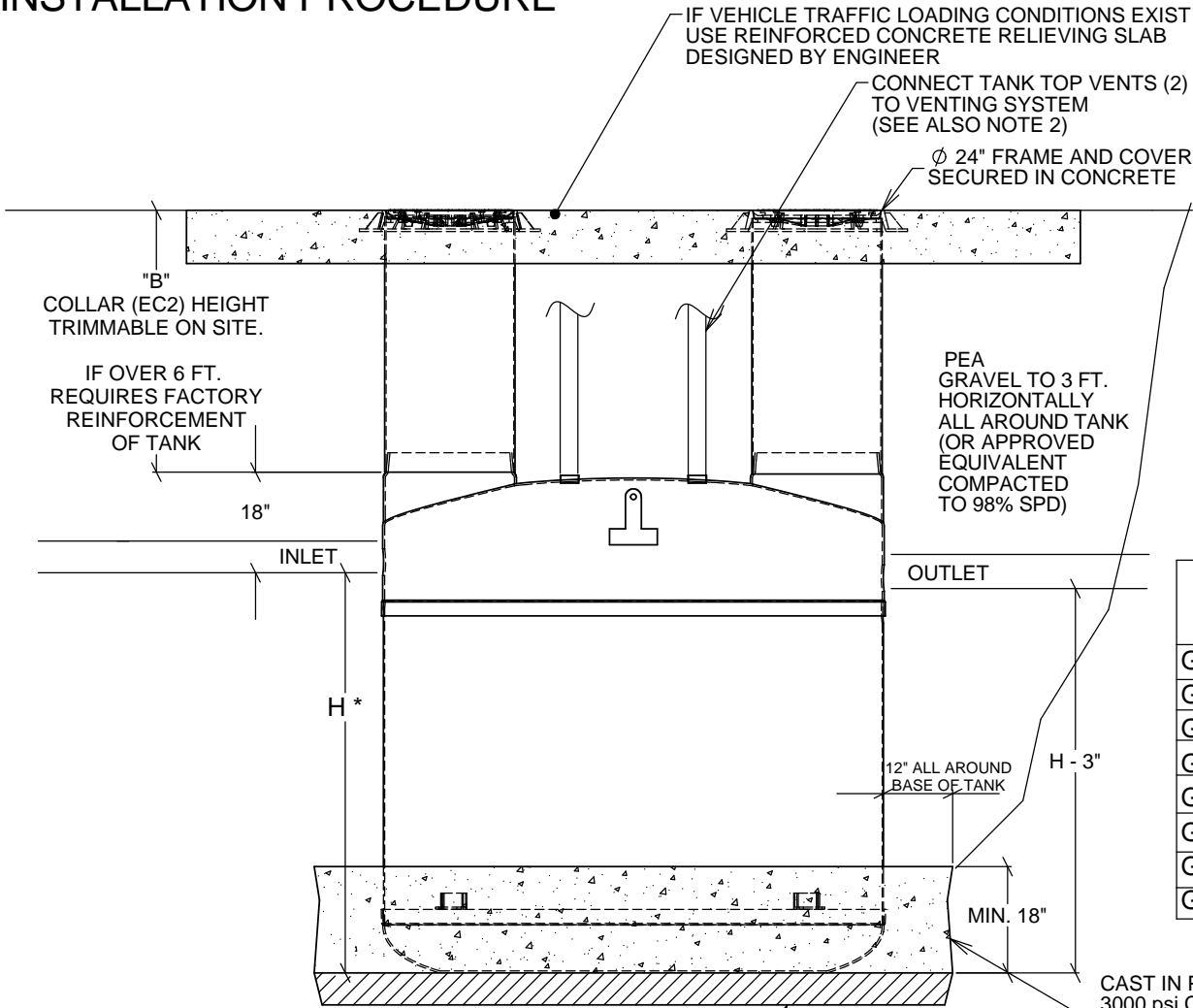


TABLE 2

PROCEPTOR SEPARATOR MODEL	INLET INVERT TO TANK BOTTOM (H*)	DRY WEIGHT OF TANK
GMC 500 UPC	33"	565 lbs
GMC 750 UPC	46"	645 lbs
GMC 1000 UPC	60"	720 lbs
GMC 1300 UPC	75"	815 lbs
GMC 1500 UPC	86"	875 lbs
GMC 750 FL	46"	645 lbs
GMC 1000 FL	60"	720 lbs
GMC 1250 FL	75"	815 lbs

TABLE 1

BURIAL DEPTH	B
Max.	6 ft.
Min. with Traffic	18"
Min. no Traffic	** 12"

\*\* ESTIMATED SPACE REQUIRED TO FIT VENT ELBOWS UNDER FLOOR

MIN. 6" PEA GRAVEL (OR APPROVED BACKFILL COMPACTED TO 98% SPD)

CAST IN PLACE SLAB.  
3000 psi CONCRETE READY MIX POUR 12 INCHES HORIZONTALLY ALL AROUND BASE OF UNIT. 58 CU FT MINIMUM CONCRETE VOLUME BASED ON CONCRETE DENSITY OF 130 LBS / CU FT.

TITLE: PROCEPTOR F.O.G. SEPARATOR  
INSTALLATION FOR GMC  
500, 750, 1000, 1300, 1500 UPC  
750, 1000, 1250 FL

PROJECT: WO:

AVAILABLE OPTIONS (CHECKED IF REQUESTED)

REV	DATE	DRAWN
11	SEPTEMBER 7, 2010	L. SIMKINS
12	AUGUST 12, 2011	L. SIMKINS
13	FEBRUARY 12, 2013	S. MANGAT
14	MAY 27, 2013	S. MANGAT
15	JULY 30, 2015	
16		
17		
18	APRIL 06, 2016	
19	MAY 16, 2017	
20	JUNE 3, 2010	L. SIMKINS
DRAWN BY: F. CHANDLER		
DRAWN DATE 6/18/04		

**Proceptor**  
**ZURN**

SIZE	DWG. NO.	REV.
A	INSTALL GMC 500-1500 UPC FL	19
SCALE:1:45	DO NOT SCALE DRAWING	SHEET 1 OF 1