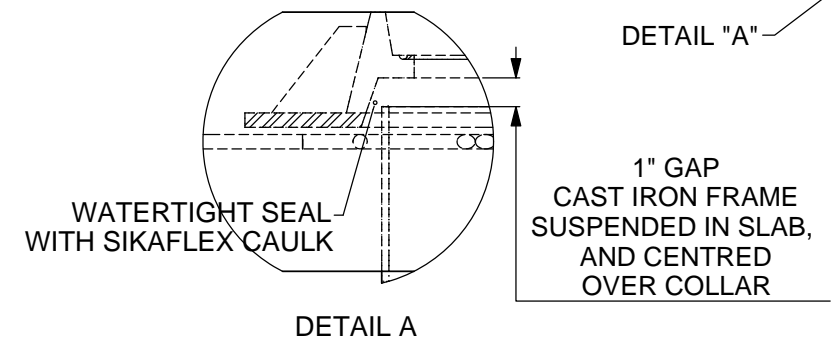


- NOTES:
- CONCRETE TO BE 28 DAY COMPRESSIVE STRENGTH TO 4000 PSI.
 - NO. 4 REBAR ($\phi 1/2"$) GRADE 60 STEEL PER ASTM A615; CONNECTED WITH TIE WIRE.
 - REBAR TO BE 2.5" FROM FACE OF CONCRETE.
 - REBAR SPACING 12" GRID, 4" SPACING AROUND ACCESS OPENINGS.
 - ALL PENETRATIONS TO BE SLEEVED OR HAVE SLIP CONNECTIONS.
 - MINIMUM 18" FROM TOP OF SLAB TO TOP OF TANK.
 - EXTEND COMPACTED BACKFILL A MINIMUM 3 FT. BEYOND ALL SIDES OF TANK.

TANK MODELS
GMC 500 UPC
GMC 750 UPC & FL
GMC 1000 UPC & FL
GMC 1250 FL
GMC 1300 UPC
GMC 1500 UPC
GMC 2000 UPC



TITLE:		REV	DATE	DRAWN
H2O TRAFFIC LOADING SLAB FOR SINGLE ELLIPTICAL TANK ALL DIMENSIONS ARE IN INCHES UNLESS OTHERWISE SHOWN.		1	OCTOBER 1, 2010	L. SIMKINS
		2	JULY 02, 2013	S. MANGAT
		3	MAY 12, 2014	S. MANGAT
		4	JAN. 08, 2015	S. MANGAT
PROJECT: WO:		5		
✓ CONFIGURATION:		6		
		7		
		8		
		9		
		10		
DRAWN BY: L. SIMKINS		SCALE: 1:35		
DRAWN DATE: OCTOBER 1, 2008		DO NOT SCALE DRAWING		

SIZE	DWG. NO.	REV.
A	SINGLE SLAB DUAL ACCESS	5

SHEET 1 OF 1