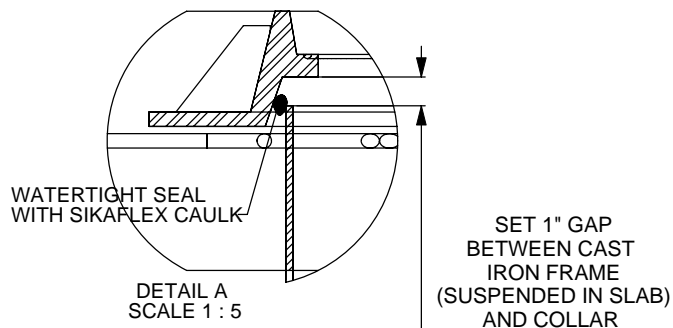


NOTES:

- CONCRETE TO BE 28 DAY COMPRESSIVE STRENGTH TO 4000 PSI.
- NO. 4 REBAR (ϕ 1/2") GRADE 60 STEEL PER ASTM A615; CONNECTED WITH TIE WIRE.
- REBAR TO BE 2.5" FROM FACE OF CONCRETE.
- REBAR SPACING 12" GRID, 4" SPACING AROUND ACCESS OPENINGS.
- ALL PENETRATIONS TO BE SLEEVED OR HAVE SLIP CONNECTIONS.
- MINIMUM 36" FROM TOP OF SLAB TO TOP OF TANK.
- EXTEND COMPACTED BACKFILL A MINIMUM 3 FT. BEYOND ALL SIDES OF TANK.

TANK MODELS

- GMC/OMC 8000
- GMC/OMC 9000
- GMC/OMC 10,000



TITLE:		REV	DATE	DRAWN
H2O TRAFFIC LOADING SLAB FOR TRIPLE 92 IN. DIA. TANKS		1		
ALL DIMENSIONS ARE IN INCHES UNLESS OTHERWISE SHOWN.		2		
PROJECT: WO:		3		
✓ CONFIGURATION:		4		
		5		
		6		
		7		
		8		
		9		
		10		
DRAWN BY: L. SIMKINS				
DRAWN DATE: OCTOBER 27, 2010				

greenturtle[®]

US 877 428 8187 CAN 877 966 9444
www.greenturtletech.com

SIZE	DWG. NO.	REV.
A	TRIPLE SLAB 92 IN TANKS	
SCALE: 1:10	DO NOT SCALE DRAWING	SHEET 1 OF 1