

Lavatory

Z5324.608.3.07.49.0

TAG _____

Z6920-XL-CP4-TMV-1

Sensor Faucet

ADA compliant, battery-powered, chrome-plated sensor faucet for retrofit and new construction. 1.5 gpm vandal resistant aerator, infrared convergence-type proximity sensor, 30-second time out feature, chrome-plated cast brass spout, in-line filter, 4 "AA" batteries, and inlet for a 1/2" [13 mm] ball riser. Lead-free.



Z8746-PC

Offset Wheelchair Grid Drain

Cast brass body with cast brass open grid drain strainer, cast brass elbow and 1-1/4" 17-gauge tubular brass offset tailpiece for sink depth to 2-1/2".



Z8700-PC

1-1/4" Cast Brass P-Trap with Cleanout

Chrome-plated, cast body p-trap, tubular wall bend 10" CL, die cast nuts, shallow escutcheon with 1-1/4" compression inlet x 1-1/4" compression outlet.



Z8808-XL-LRLKCE-PC

Loose Key Stop Lavatory Supply Kit (Connections 1/2" SWT x 3/8" OD)

Two chrome-plated, solid brass angle stops with round wheel handles or loose key as specified, two 12" [305 mm] flexible chrome-plated copper lavatory risers complete with two chrome-plated steel flanges. Zurn "XL" products are manufactured with *not more than 0.25% lead content when used with respect to wetted surfaces of pipes and pipe fittings, plumbing fitting and fixtures: California Health & Safety Code § 116875; Vermont 9 VCA § 2470h

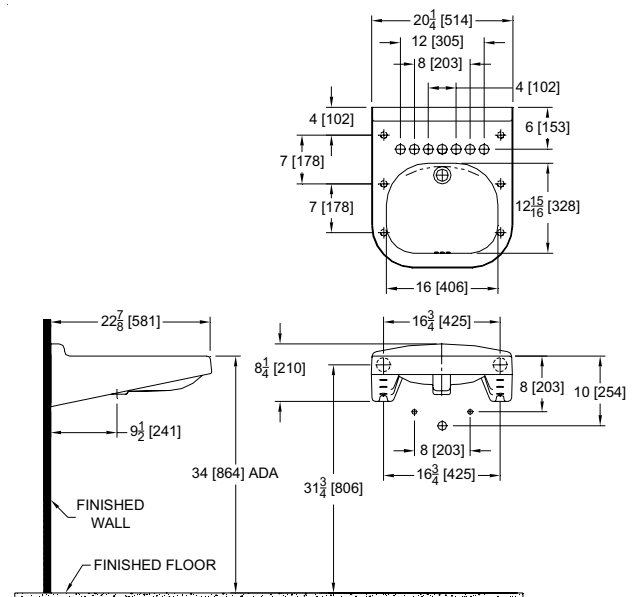


Wall-Mounted Lavatory with Faucet, Drain, P-Trap and Supply Line

Z5324

23" x 20-1/4" Wall-Mounted Concealed Carrier Arm ADA Lavatory

Vitreous china, wall-mounted lavatory provided with holes for concealed arm carrier systems.



These dimensions and specifications are subject to change without notice.

Fixture dimensions meet ANSI/ASME standard A112.19.2 and CAN/CSA B45 requirements.

Meets the American Disabilities Guidelines and ANSI A117.1 requirements when lavatory is installed 34" [864 mm] from finished floor.