

# Lavatory

## Z5324.921.1.07.E6.0

TAG

### Z6955-XL-S-TMV-1

#### 4" Base Aqua-FIT® Battery Sensor Faucet with TMV

Cast brass, polished chrome, automatic sensor faucet. Faucet is offered in standard AA battery, hardwire, dc plug-in, or extended long life 10 year battery. Product offered with flow rates ranging from 1.5gpm - .35gpm, custom time-out settings, line purge options, and two sensing mode options (standard and metering).



### Z8743-PC

#### Grid Drain

Cast Brass, solid-top, open-grid, P.O. plug with 6" 17-gauge tailpiece and cast brass locknut, for sink depths up to 2-1/4". 8", 10" and 12" tailpieces available.



### Z8700-PC

#### 1-1/4" Cast Brass P-Trap with Cleanout

Chrome-plated, cast body p-trap, tubular wall bend 10" CL, die cast nuts, shallow escutcheon with 1-1/4" compression Inlet x 1-1/4" compression outlet.



### Z8804-XL-LR-PC

#### Angle Stop

Chrome-plated, solid brass angle stop compression to compression fitting with round wheel handle or loose key as specified. Zurn Lead Compliant\* "XL" products are a line of durable, high quality brass faucets and fixtures that are designed and manufactured to comply with state laws and local codes that mandate lead content levels. Zurn "XL" products are manufactured with \*not more than 0.25% lead content when used with respect to wetted surfaces of pipes and pipe fittings, plumbing fitting and fixtures: California Health & Safety Code § 116875; Vermont 9 VCA § 2470h.



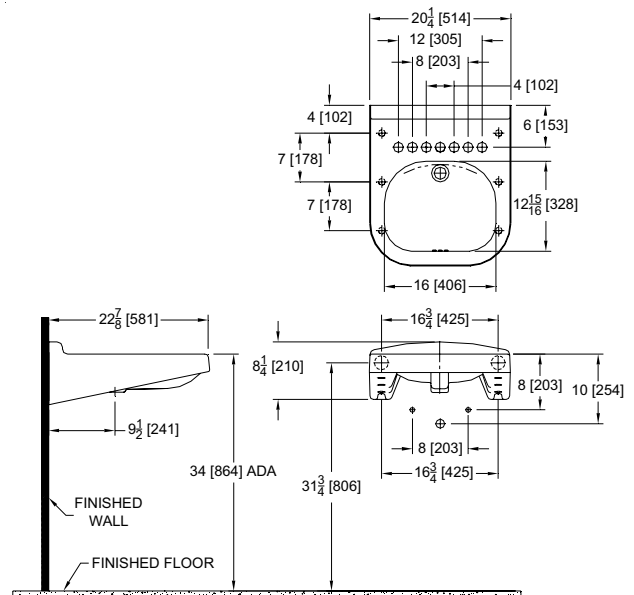
## Wall-Mounted Lavatory with Sensor Faucet, Drain, P-Trap and Supply Line

### Z5324

#### 23" x 20-1/4" Wall-Mounted

#### Concealed Carrier Arm ADA Lavatory

Vitreous china, wall-mounted lavatory provided with holes for concealed arm carrier systems.



These dimensions and specifications are subject to change without notice.

Fixture dimensions meet ANSI/ASME standard A112.19.2 and CAN/CSA B45 requirements.

Meets the American Disabilities Guidelines and ANSI A117.1 requirements when lavatory is installed 34" [864 mm] from finished floor.