



Z5640-BWL

1.6 GPF ADA, Elongated Floor Mounted,
Back Outlet Flush Valve Toilet

TAG _____

Architectural/Engineering Specification:

Vitreous china, 1.6 gpf low consumption, elongated front rim, siphon jet action, floor mounted flush valve toilet with 1-1/2" top spud and 4-1/8" back outlet rough-in.

Product Features:

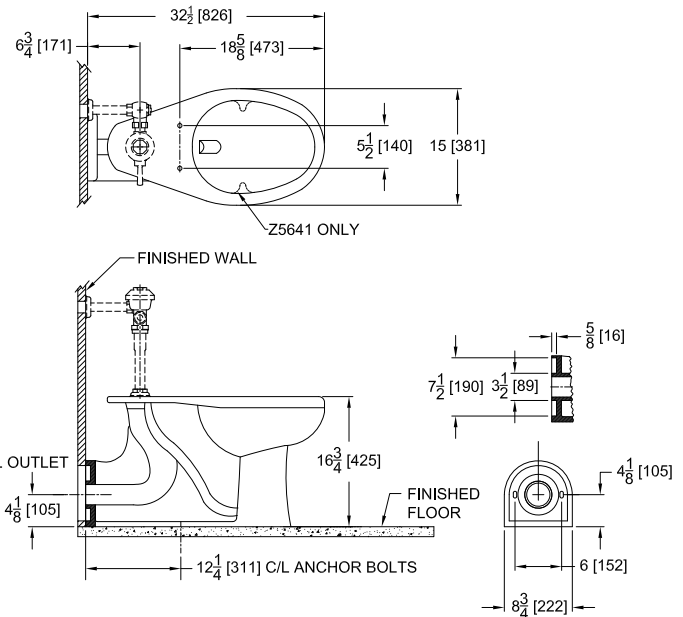
- 1.6 gpf (gallons per flush)
- Vitreous china
- Elongated front rim
- 4-1/8" back outlet rough-in
- Siphon jet flush action
- 1-1/2" top spud
- Includes bolt caps
- Shipping weight: 49 lbs.

Configurations:

- Z5640-BWL As described
- Z5641-BWL As described with integral bed pan lugs.

Recommended Trim:

- Z5972-COMB
- Closet bolt & wax ring kit.
- Z5958SS-EL
- Elongated, white, closed front toilet seat with cover & stainless steel check hinge.



Rough-in/Overview dimensions for Z5640 Series

Z5640-BWL with top spud

Z5641-BWL with top spud and bedpan lugs

See Zurn One Systems for suggested packages.

Architectural/Engineering Approval

The information contained in this document is subject to change without notice.
Please contact Zurn for most up to date information.

Compliance and Certification:

- ADA Compliant



Meets the American Disabilities Guidelines and ANSI A117.1 requirements when installed according to these requirements. Fixture dimensions meet ASME A112.19.2/CSA B45.1 requirements. In Canada - Consult local codes and standards.