



Z1072

ZSHIELD™ BARRIER TRAP INSTALLATION INSTRUCTIONS

Design and Dimensional Data (inches and [mm]) are Subject to Manufacturing Tolerances and Change Without Notice

Z1072 ZSHIELD™ can be installed in Extra Heavy Cast Iron Soil Pipe, Hubless Cast Iron Soil Pipe, PVC Drain, Waste and Vent Pipe, PVC Schedule 40 Pipe and Service Cast Iron Soil Pipe

For 2", 3" and 3.5" Retro-Fit Installation

4" Size can be Retro-Fit, if the -HD (4" Shank) top assembly was installed

1. Remove screws and strainer from installed drain.

Make sure drain outlet is clear of any debris or obstructions prior to installing the Z1072.

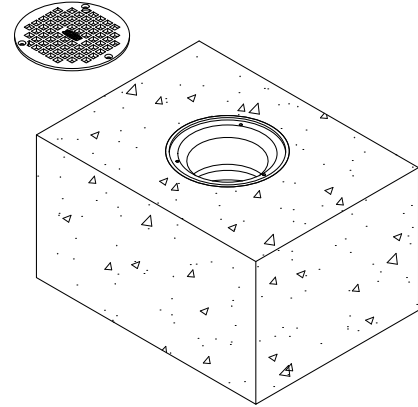


Fig. 1

2. Align Z1072 with the center of the drain assembly

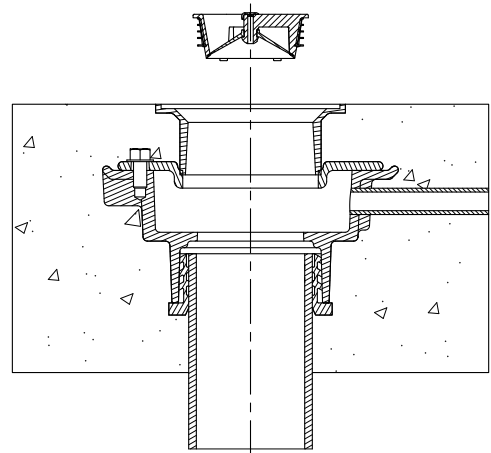


Fig. 2

3. Push Z1072 into bottom of drain body or outlet pipe until the underside of the barrier trap is flush with bottom of drain or top of the pipe. See Fig. 3

If using the 3.5" barrier trap seal push the barrier trap down until the underside of the barrier trap is flush with the shank of the strainer. See Fig. 3a

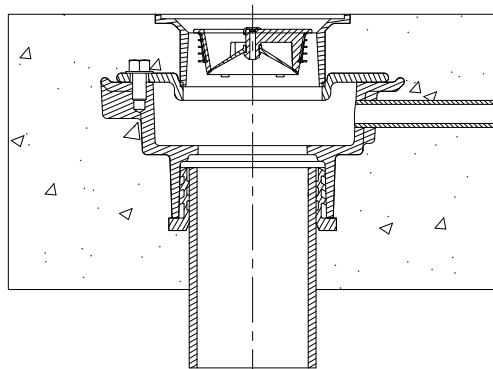


Fig. 3a

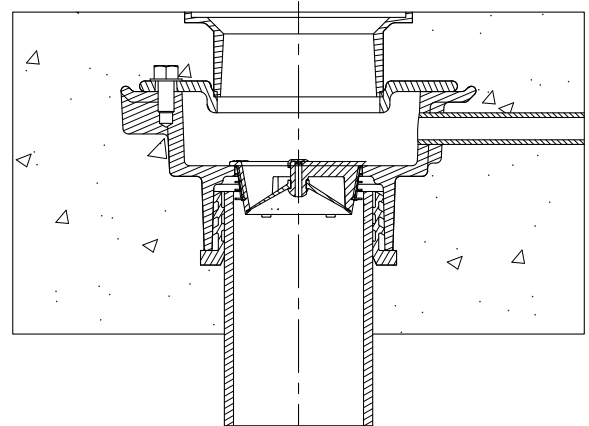


Fig. 3

⚠ WARNING: Cancer and Reproductive Harm - www.P65Warnings.ca.gov

⚠ ADVERTENCIA: Cáncer y daño reproductivo - www.P65Warnings.ca.gov

⚠ AVERTISSEMENT: Cancer et effets néfastes sur la reproduction - www.P65Warnings.ca.gov

Zurn Industries, LLC | Specification Drainage Operation
1801 Pittsburgh Avenue, Erie, PA 16502, Ph. 855.663.9876

In Canada | Zurn Industries Limited
7900 Goreway Drive, Unit 10, Brampton, Ontario L6T 5W6, Ph. 877.892.5216

www.zurn.com

Rev.	C
Date:	11/25/2022
C.N. No.	144896
Patent	zurn.com/patents
Prod. Dwg. No.	FD95 Page 1 of 2



Z1072

ZSHIELD™ BARRIER TRAP INSTALLATION INSTRUCTIONS

Design and Dimensional Data (inches and [mm]) are Subject to Manufacturing Tolerances and Change Without Notice

- 4. Make sure rubber seal wasn't damaged during installation. Verify rubber seal is smooth and flat.

- 5. Replace strainer and screws. Fig. 11.

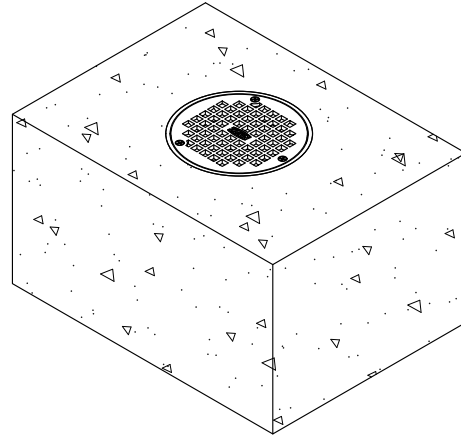


Fig. 11

For 2", 3" and 4" New Installation

Z1072 ZSHIELD™ can be installed in Extra Heavy Cast Iron Soil Pipe, Hubless Cast Iron Soil Pipe, PVC Drain, Waste and Vent Pipe, PVC Schedule 40 Pipe and Service Cast Iron Soil Pipe.

- 6. For IC, IG and NPT outlet connections, Align Z1072 over center of pipe. See Fig. 12.

For NL or NH connections, Align Z1072 over center line of drain body. See Fig. 12A

Make sure drain outlet or pipe is clear of any debris or obstructions prior to installing the Z1072.

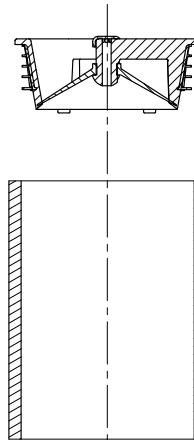


Fig. 12

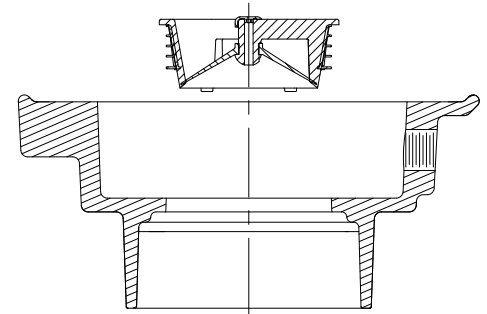


Fig. 12a

- 7. For IC, IG and NPT outlet connections, make sure bottom of Z1072 is flush with top of pipe. See Fig. 13.

For NL or NH connections, make sure bottom of Z1072 is flush with the bottom of the drain body. See Fig. 13A

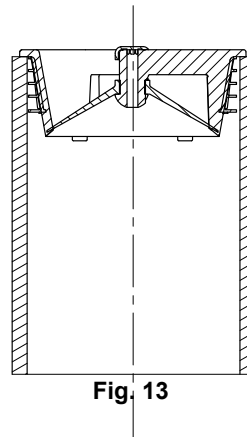


Fig. 13

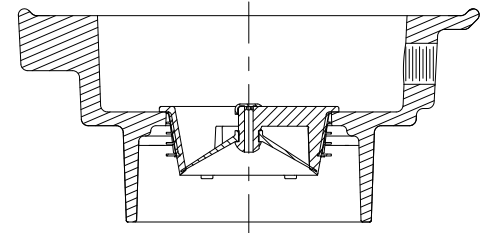


Fig. 13a

- 8. Finish drain installation per manufacturers installation instructions.

⚠ WARNING: Cancer and Reproductive Harm - www.P65Warnings.ca.gov

⚠ ADVERTENCIA: Cáncer y daño reproductivo - www.P65Warnings.ca.gov

⚠ AVERTISSEMENT: Cancer et effets néfastes sur la reproduction - www.P65Warnings.ca.gov

Zurn Industries, LLC | Specification Drainage Operation
1801 Pittsburgh Avenue, Erie, PA 16502, Ph. 855.663.9876

In Canada | Zurn Industries Limited
7900 Goreway Drive, Unit 10, Brampton, Ontario L6T 5W6, Ph. 877.892.5216

www.zurn.com

Rev.	C
Date:	11/25/2022
C.N. No.	144896
Patent	zurn.com/patents
Prod. Dwg. No.	FD95 Page 2 of 2