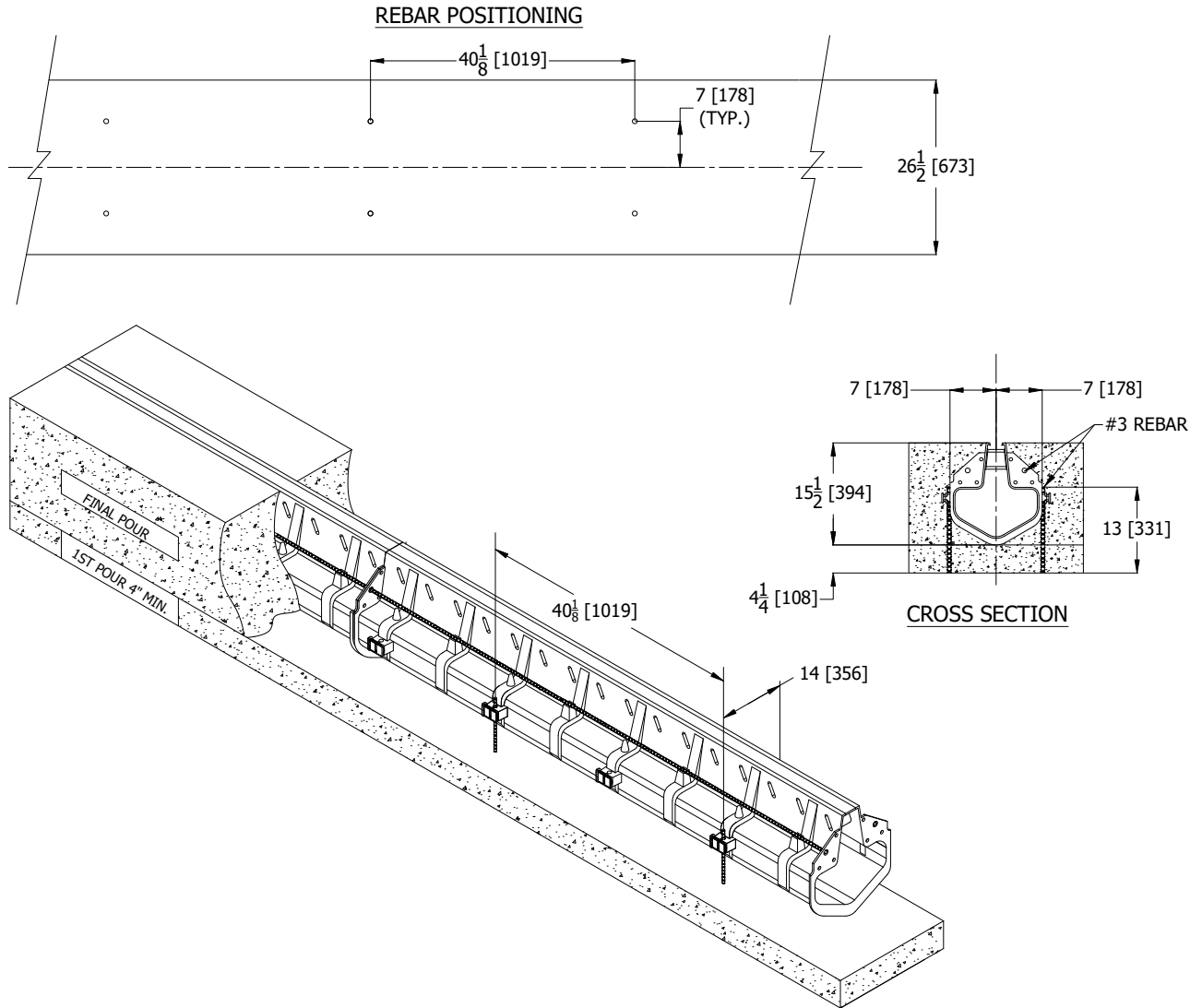




Z888-12

SPECIAL INSTALLATION

Dimensional data (inches and [mm]) are subject to manufacturing tolerances and change without notice.



Special Installation: A minimum concrete base of 2000psi [13.8Mpa], minimum depth of 4" [102mm], and width of 26-1/2" [673mm] must be cast with two #4 (1/2") re-bar spaced on 40-1/8" [1019mm] intervals along the channels flow direction and 7" [178mm] on either side of the centerline of the channel. Set the initial pour to final grade minus 15-1/2" [394mm]. Install the channels onto the re-bar starting at the outlet, working to the beginning of the run (upstream). Using the pre-formed re-bar clips on the Hi-Cap slotted drainage system to hold the channel into position and attach the supplied re-bar clip fastening hardware to lock the system and keep it from floating during the final concrete pour.

⚠ WARNING: Cancer and Reproductive Harm - www.P65Warnings.ca.gov

⚠ ADVERTENCIA: Cáncer y daño reproductivo - www.P65Warnings.ca.gov

⚠ AVERTISSEMENT: Cancer et effets néfastes sur la reproduction - www.P65Warnings.ca.gov

*Regularly furnished unless otherwise specified.

Zurn Industries, LLC | Specification Drainage Operation
1801 Pittsburgh Avenue, Erie, PA U.S.A. 16502 · Ph. 855-663-9876, Fax 814-454-7929
In Canada | **Zurn Industries Limited**
3544 Nashua Drive, Mississauga, Ontario L4V 1L2 · Ph. 905-405-8272, Fax 905-405-1292
www.zurn.com

Rev. A
Date: 6/11/2018
C.N. No. 140146
Form No. FT682