

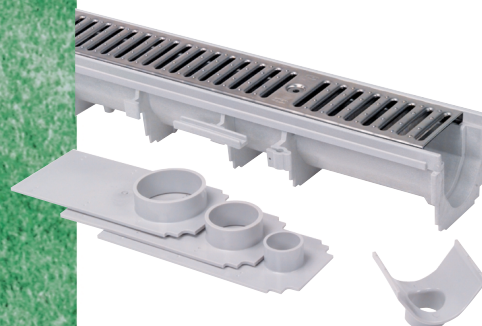
Zurn... Making Great Strides In Sport Track Drainage

With Perma-Track!

The Zurn Z886-ST 6" [152 mm] wide Perma-Track system is designed for use around tracks and athletic fields and for use with either natural grass or synthetic surfaces. This drainage system features a modular concept for ease of handling and installation. It utilizes the latest in composite technology to provide both standard and pre-radiused channels to contour to the inside perimeter of a running track. The system also features excellent hydraulics and a superior quick connect overlap providing smooth, uninterrupted installation.

ZURN PERMA-TRACK SYSTEM FEATURES

- Excellent hydraulics from smooth polyethylene non-stick surface and radiused bottom.
- Pre-radiused components.
- 80" modular sections – allows for quick and easy assembly.
- Quick connect overlap feature.
- End caps and outlets available that provide almost any outlet connection.



Z886 6" WIDE
PERMA-TRENCH DRAIN



Z888 12" WIDE
CAPACITY TRENCH DRAIN

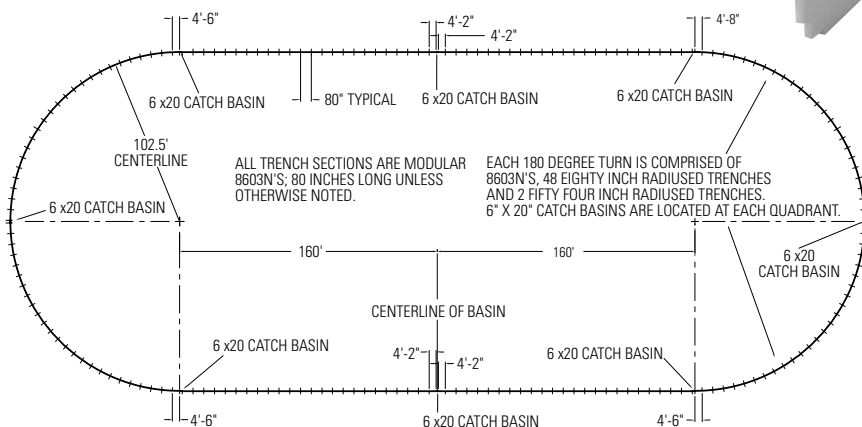
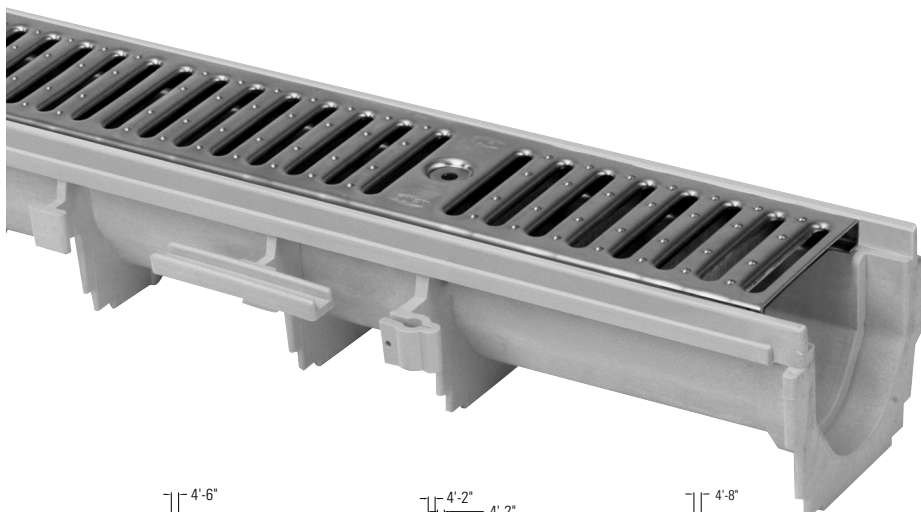
For more information on any of these new product innovations, contact:



ZURN INDUSTRIES, INC.
FLO-THRU OPERATION
2640 SOUTH WORK STREET
FALCONER, NY, U.S.A. 14733
PHONE: 716/665-1132
FAX: 716/665-1135

In Canada:
ZURN INDUSTRIES LIMITED
3544 NASHUA DRIVE
MISSISSAUGA, ONTARIO L4V 1L2
PHONE: 905/405-8272
FAX: 905/405-1292

ZURN PERMA-TRACK TRENCH DRAIN SYSTEM



ENGINEERING SPECIFICATION – Z886-ST

Zurn Z886-ST 6" [152 mm] wide radiused trench drainage system. High density polyethylene composite modular system with pre-radiused trench sections that conform to the inside perimeter of a typical 400 meter running track. Typical invert of the radiused sections is 5.3 inches [134 mm]. Complete with galvanized steel slotted grating and combination anchor tabs/leveling devices at appropriate locations.

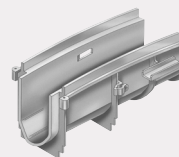
Channel	Overall Depth		Max. Flow Rate		Approx. Wt.	
	C Min.	D Max.	GPM	L/M	Lbs.	Kg.
8603N	5.3	134.6	5.3	134.6	17	7.7

Estimated flow rates for each trench system have been provided as a guide for proper system selection. Actual field conditions such as topographical characteristics, outlet restrictions, etc., may cause flow rates to differ from the above rates.

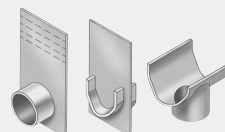
Z888 SYSTEM FEATURES AND ADVANTAGES

- 80" MODULAR SECTIONS – allows quick and easy assembly, straighter installation.
- PRE-RADIUSSED COMPONENTS
- RADIUSSED BOTTOM – provides for better flow rate, less solids build-up.
- SMOOTH HIGH DENSITY POLYETHYLENE STRUCTURAL COMPOSITE INTERIOR – 0% water absorption.
- DURABLE AND LIGHTWEIGHT – strong corrosion-resistant material.
- QUICK CONNECT OVERLAP FEATURE – rigid mechanical interlock keeps trench systems straight and liquid tight.
- VARIETY OF GRATINGS – able to meet specific job requirements.
- TIE-DOWN/LEVELING DEVICE EVERY 20" – integral rebar clips make it easier to place and level anchor mechanisms.
- VERSATILITY OF OUTLET LOCATIONS – easier to install, flexible outlet location.
- INTEGRAL FRAME
- REMOVABLE LOCKDOWN BARS – easy access for cleaning.

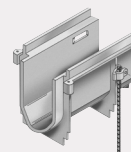
Pre-Radiused Components



Various Accessories



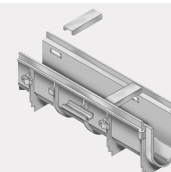
Integral Rebar Clips



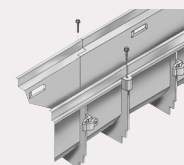
Grate Lockdown Bar



Installation Spacer Bar



Mechanical Overlap Connection



ZURN INDUSTRIES, INC.
FLO-THRU OPERATION
2640 SOUTH WORK STREET
FALCONER, NY, U.S.A. 14733
PHONE: 716/665-1132
FAX: 716/665-1135

In Canada:
ZURN INDUSTRIES LIMITED
3544 NASHUA DRIVE
MISSISSAUGA, ONTARIO L4V 1L2
PHONE: 905/405-8272
FAX: 905/405-1292