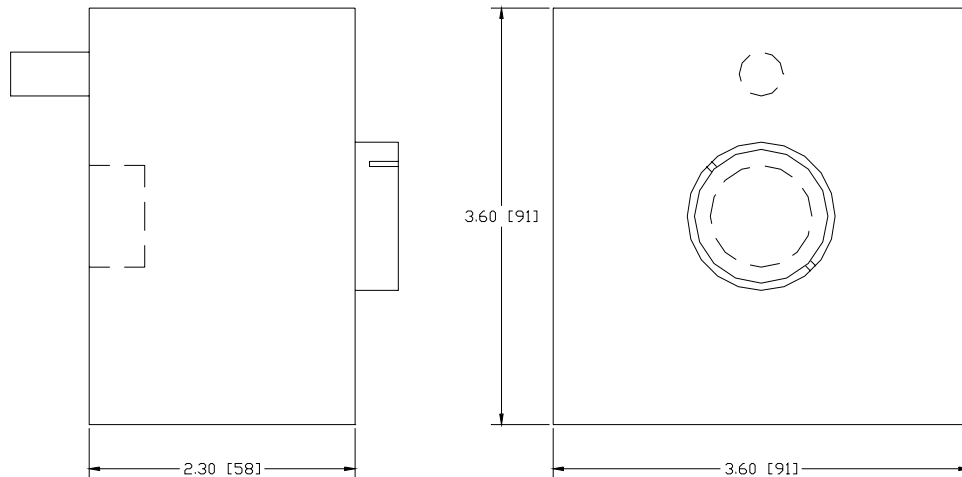




Snow Melt Switch – QHSMS Specification Sheet

Tag _____

Dimensional Data: Inches and [mm] are subject to manufacturing tolerances and change without notice.



Engineering Specification: Zurn Snow Melt Switch allowing for the on/off control of a circulator pump. The 24VAC switch has a 2.5W maximum power consumption. The heated sensing grid detects moisture and closes a relay for a fixed 5 hours after the sensor has dried. The switch activates when the outdoor air temperature drops below 38°F (3.3°C). The snow switch has 1/2" FNPT mounting hole on the bottom.

Accessories

- ___ **QHMZ1P** Single Zone Pump Relay Control
- ___ **QHMZ4P** Four Zone Pump Relay Control
- ___ **QHMZ6P** Six Zone Pump Relay Control

Rev.	Date: 06/06/02	C.N. No. 89588
Dwg. No. 66756		Prod. No. QHSMS