



# Z5667-BWL1

HET Elongated Floor Mounted ADA Height EcoVantage®  
Back Spud Flush Valve Toilet with Antimicrobial Glaze

TAG \_\_\_\_\_



## Z5667 HET Series

- Zurn HET Toilet System designed for optimal performance between Zurn fixture and Zurn flush valve at 1.1 gpf [4.2 lpf], 1.28 gpf [4.8 Lpf], 1.6 gpf (6.0 Lpf) or Dual Flush volumes to save water.
- 1.1 gpf [4.2 lpf], 1.28 gpf [4.8 lpf], or 1.6 gpf [6.0 lpf], or Dual Flush
- 1.1 gpf offers 31% water savings over 1.6 gpf system
- Vitreous china
- Antimicrobial ceramic glaze utilizing SmartSilver™ nano-technology to create a permanent surface that inhibits the growth of stain and odor causing mold, mildew & bacteria, thus minimizing the need for cleaning chemicals and water to cleanse the bowl.
- ADA height
- Elongated front rim
- 1-1/2" Back Spud
- 2-1/8" fully glazed trapway
- High efficiency siphon jet flush action
- Shipping Weight: 57 lbs.

## Z5665 Top Spud Series Shown Above

### Recommended Trim:

- ☐ **Z5955SS-EL** Elongated, standard white, open front toilet seat less cover with stainless steel check hinge.
- ☐ **Z5972-COMB** Closet bolt/wax ring kit

*Note: To ensure system performance:  
Minimum Running Water Pressure = 25 psi*



This product should be used with a WaterSense labeled counterpart with a compatible flush volume to ensure that the entire system meets the requirements for water efficiency and performance.

## Engineering Specification

- ☐ **Z5667-BWL1, EcoVantage High Efficiency Toilet** - Vitreous China, 1.1 gpf [4.2 lpf] or greater high efficiency, floor mounted, ADA height, bottom outlet toilet with siphon jet flushing action and elongated front rim with 1-1/2" back spud. This bowl is designed to perform to industry standards with as little as 1.1 gallons per flush, engineered to provide optimal performance and 31% water savings over conventional 1.6 gpf toilets.

**\*Replaces Zurn Z5667**

See Zurn One Systems for suggested packages.

Architectural/Engineering Approval

*These dimensions and specifications are subject to change without notice.*

*Fixture dimensions meet ANSI/ASME standard A112.19.2 and CAN/CSA B45 requirements.*

*Meets the American Disabilities Guidelines and ANSI A117.1 requirements when installed per code.*



**ZURN INDUSTRIES, LLC. ♦ COMMERCIAL BRASS OPERATION ♦ 5900 ELWIN BUCHANAN DRIVE ♦ SANFORD NC 27330**

**Phone: 1-800-997-3876 ♦ Fax: 919-775-3541 ♦ World Wide Web: [www.zurn.com](http://www.zurn.com)**

**In Canada: ZURN INDUSTRIES LIMITED ♦ 7900 Goreway Drive Unit 10 ♦ Brampton, Ontario L6T5W6 ♦ Phone: 905-405-8272 Fax: 905-405-1292**



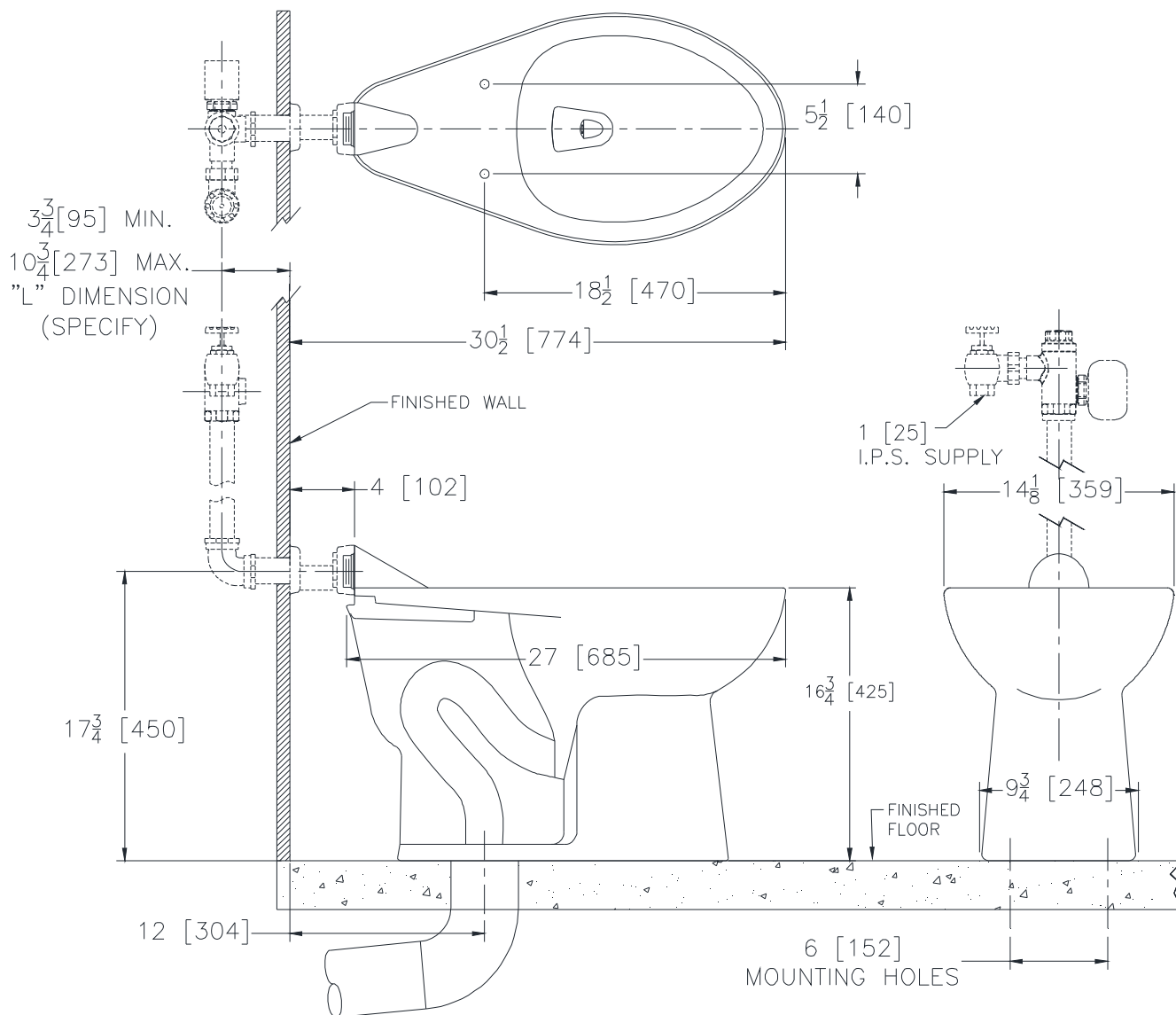
# Z5667-BWL1

HET Elongated Floor Mounted ADA Height EcoVantage®  
Back Spud Flush Valve Toilet with Antimicrobial Glaze

TAG \_\_\_\_\_

Rough-in dimensions for Z5667 Series

- Z5667-BWL with back spud.



These dimensions and specifications are subject to change without notice.

Fixture dimensions meet ANSI/ASME standard A112.19.2 and CAN/CSA B45 requirements.

Meets the American Disabilities Guidelines and ANSI A117.1 requirements when installed per code.



**ZURN INDUSTRIES, LLC. ♦ COMMERCIAL BRASS OPERATION ♦ 5900 ELWIN BUCHANAN DRIVE ♦ SANFORD NC 27330**

Phone: 1-800-997-3876 ♦ Fax: 919-775-3541 ♦ World Wide Web: [www.zurn.com](http://www.zurn.com)

In Canada: **ZURN INDUSTRIES LIMITED ♦ 7900 Goreway Drive Unit 10 ♦ Brampton, Ontario L6T5W6 ♦ Phone: 905-405-8272 Fax: 905-405-1292**