



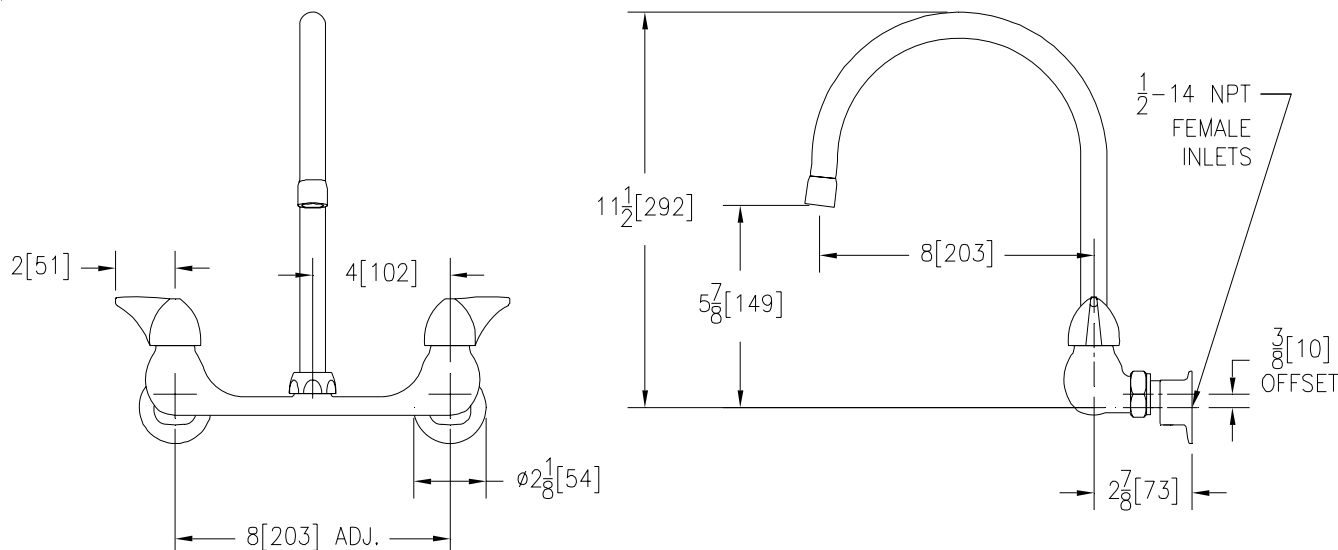
SINK FAUCET Z842C3

TAG _____



Engineering Specifications: Zurn AquaSpec® Z842C3

Polished chrome-plated cast brass 8" [203mm] sink faucet with quarter turn ceramic disc cartridges, 3/8" [10mm] short swivel inlets providing adjustable centers from 7-1/4" [184mm] to 8-3/4" [222mm] and a 8" [203mm] centerline rigid or swing gooseneck spout with a 2.2 GPM [8.3 L] pressure compensating aerator (Complying with ANSI A112.18.1 Standard for flow). Unit is furnished with 2" [51mm] vandal-resistant color-coded metal dome lever handles.



Note: All dimensions are for reference only. Do not use for pre-plumbing

OPTIONAL ACCESSORIES

Suffix	Description
—FC	2.0 GPM [7.6 L] Laminar Flow Control in Base of Spout
—HCT	Hot/Cold Text Indexes
—LSI	2-1/2" [64mm] Long Swivel Inlets with Integral Stops
—RC	Rough Chrome Plated
—2F	2.2 GPM [8.3 L] Vandal-Resistant Pressure Compensating Female Aerator
—3F	0.5 GPM [1.9 L] Vandal-Resistant Pressure Compensating Female Aerator
—4F	2.2 GPM [8.3 L] Vandal-Resistant Pressure Compensating Female Aerator
—5F	2.0 GPM [7.6 L] Female Spray Outlet
—7F	1.0 GPM [3.8 L] Pressure Compensating Female Spray Outlet
—16F	1.0 GPM [3.8 L] Vandal Resistant Pressure Compensating Female Spray Outlet
—17F	1.5 GPM [5.7 L] Vandal Resistant Pressure Compensating Female Aerator
—18F	1.5 GPM [5.7 L] Vandal Resistant Pressure Compensating Female Laminar Flow

ZURN INDUSTRIES, INC. ♦ COMMERCIAL BRASS OPERATION ♦ 2640 SOUTH WORK STREET ♦ FALCONER NY 14733

Phone: 1-716-665-1132 ♦ Fax: 1-716-665-1135 ♦ World Wide Web: www.zurn.com

In Canada: ZURN INDUSTRIES LIMITED ♦ 3544 Nashua Drive ♦ Mississauga, Ontario L4V1L2 ♦ Phone: 905/405-8272 Fax: 905/405-1292