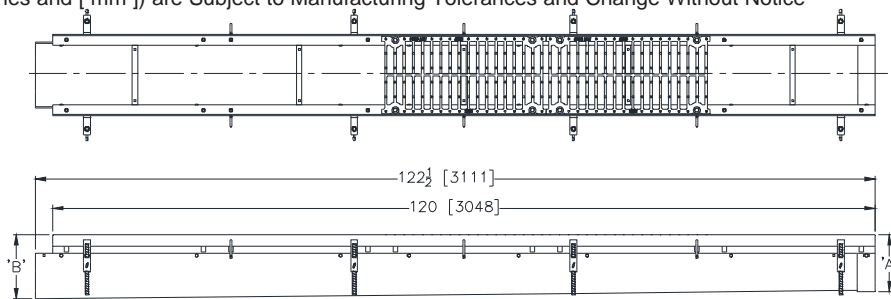
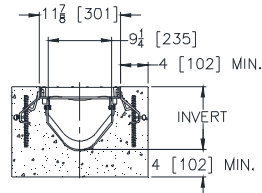


**ZF812****12 [305] WIDE REVEAL FIBER REINFORCED POLYMER
TRENCH DRAIN SYSTEM WITH STEEL FRAME****SPECIFICATION SHEET**

TAG _____

Dimensional Data (inches and [mm]) are Subject to Manufacturing Tolerances and Change Without Notice

SPECIFYING ENGINEER IS
RESPONSIBLE FOR CONCRETE
ENCASEMENT AND REINFORCING
BASED UPON APPLICATION AND
LOCAL CODES.

NOTE: +ACTUAL CHANNEL LENGTH IS 122 1/2 [3111] TO ALLOW FOR OVERLAP.

ENGINEERING SPECIFICATION: ZURNZF812

Channels are 120" [3048mm] long, 12" [305mm] wide reveal and have a 9-1/4" [235mm] throat. Modular channel sections are made of Fiber Reinforced Polymer (FRP), and have a positive mechanical connection between channel sections that will not separate during the installation. Channels weigh less than 5.05 lbs. [2.29 kg] per linear foot, have a smooth, 3" [76mm] radiused self cleaning bottom with a Manning's coefficient of .009 and 1.04% or neutral 0% built in slope. Channels are provided with standard DGC grates that lock down to frame. Zurn 12" [305mm] wide reveal Ductile Iron Slotted Grate conforming to ASTM specification A536, Grade 80-55-06. Ductile Iron grate is rated class C per the DIN EN 1433 top load classifications. Supplied in 24" [610mm] nominal lengths with 13/16" [21mm] wide slots, and 1-1/2" [38mm] bearing depth. Grate has an open area of 80.8 sq. in. per ft. [171,027 sq. mm per meter]. The #7 gage thick Heavy-Duty Carbon Steel Frame Assembly conforms to ASTM specification A36. Frames shall mechanically lock into the concrete surround at a maximum spacing of every 21" [533mm], with 14 anchors per 120" [3048mm]. Frames have rebar attachment brackets as standard to secure trench to its final location. Grate lockdown bars are to be integral to the frame. The frame is supplied with a powder coated finish. All welds must be performed by a certified welder per ASTM standard AWS D1.1. Frames and Channels shall be produced in the U.S.A.

PREFIX OPTIONS (Check/specify appropriate options)

___ ZF Ten-foot Fiber Reinforced Polymer (FRP) *

Note:

The maximum fluid temperature through the system must not exceed 150°F [66°C]
and the range (Max. Temp. to Min. Temp.) must not exceed 100°F [38°C].

SUFFIX OPTIONS (Check/specify appropriate options)**Outlet Adapters Add/Each**

___ -E1 Closed End Cap
___ -E4 4 [102] No-Hub End Outlet
___ -E6 6 [152] No-Hub End Outlet
___ -E8 8 [203] No-Hub End Outlet
___ -U4 4 [102] No-Hub Bottom Outlet
___ -U6 6 [152] No-Hub Bottom Outlet
___ -U8 8 [203] No-Hub Bottom Outlet

Frame Options

___ -CWF White Acid Resistant Coated Top Frame

Grate Options (Load Classifications are per DIN EN1433)

___ -BDC Black Acid Resistant Epoxy Coated Ductile Grate - Class C
___ -BDE Black Acid Resistant Epoxy Coated Ductile Grate - Class E
___ -BDF Black Acid Resistant Epoxy Coated Ductile Grate - Class F
___ -DC Ductile Iron Solid Cover - Class E
___ -DC-G Galvanized Ductile Iron Solid Cover - Class E
___ -DGC Ductile Iron Slotted Grate - Class C *
___ -DGE Ductile Iron Slotted Grate - Class E
___ -DGF Ductile Iron Slotted Grate - Class F
___ -GDC Galvanized Ductile Slotted Grate - Class C
___ -GDE Galvanized Ductile Slotted Grate - Class E
___ -GDF Galvanized Ductile Slotted Grate - Class F
___ -GG Fiberglass Grate - Class A
___ -GHPDE Galvanized Heel-Proof Ductile Slotted Grate - Class E
___ -HPD Heel-Proof Ductile Slotted Grate - Class C
___ -HPDE Heel-Proof Ductile Slotted Grate - Class E
___ -RFGC Reinforced Slotted Galvanized Grate - Class C
___ -RPGC Reinforced Perforated Galvanized Grate - Class C

Trench No.	Dimensions in. [mm]		Flow		
	'A' Shallow Inv.	'B' Deep Inv.	(cfs)	(gpm)	(lps)
2002	7.93 [201]	9.18 [233]	2.088	937	59
2002N	9.18 [233]	9.18 [233]	-	-	-
2003	9.18 [233]	10.43 [265]	2.730	1225	77
2004	10.43 [265]	11.68 [297]	3.388	1521	96
2004N	11.68 [297]	11.68 [297]	-	-	-
2005	11.68 [297]	12.93 [328]	4.058	1821	115
2006	12.93 [328]	14.18 [360]	4.736	2125	134
2007	14.18 [360]	15.43 [392]	5.420	2432	153
2008	15.43 [392]	16.68 [424]	6.109	2742	173
2008N	16.68 [424]	16.68 [424]	-	-	-
2009	16.68 [424]	17.93 [455]	6.802	3053	193
2010	17.93 [455]	19.18 [487]	7.498	3365	212

___ -RPGRC Reinforced Perforated Galvanized Reverse Punch
Grate - Class C
___ -RFSC Reinforced Slotted Stainless Steel Grate - Class C
___ -RPSC Reinforced Perforated Stainless Steel Grate - Class C
___ -RPSRC Reinforced Perforated Stainless Steel Reverse Punch
Grate - Class C

Miscellaneous Options

___ -DB Bottom Dome Strainer
___ -JC Joint Connector
___ -VP Vandal-Proof Lockdown

MADE in the U.S.A.

___ -ADA-USA Meets Americans with Disabilities Act
Requirements - Class C
___ -BDE-USA Black Acid Resistant Epoxy Coated Ductile
Grate - Class E
___ -BG Galvanized Steel Bar Grate - Class D
___ -DGC-USA Ductile Iron Slotted Grate - Class C
___ -DGE-USA Ductile Iron Slotted Grate - Class E
___ -FG Fabricated Galvanized Steel Slotted Grate - Class A
___ -FS Fabricated Stainless Steel Slotted Grate - Class A
___ -GADA-USA Galvanized Ductile ADA Slotted Grate - Class C
___ -GDC-USA Galvanized Ductile Slotted Grate - Class C
___ -GDE-USA Galvanized Ductile Slotted Grate - Class E

___ -GHPDE-USA Galvanized Heel-Proof Ductile Slotted Grate - Class E
___ -HPDE-USA Heel-Proof Ductile Slotted Grate - Class E
___ -PG Perforated Galvanized Steel Grate - Class A
___ -PGR Perforated Galvanized Reverse Punch
Grate - Class A
___ -PS Perforated Stainless Steel Grate - Class A
___ -SBG-L Stainless Steel Bar Grate - Class C

* Regularly furnished unless otherwise specified.

Zurn Industries, LLC | Specification Drainage Operation

1801 Pittsburgh Avenue, Erie, PA U.S.A. 16502 · Ph. 855-663-9876, Fax 814-454-7929

In Canada | Zurn Industries Limited

3544 Nashua Drive, Mississauga, Ontario L4V 1L2 · Ph. 905-405-8272, Fax 905-405-1292

www.zurn.com

Rev. J

Date: 1/24/18

C.N. No. 139520

Prod. | Dwg. No. ZF812