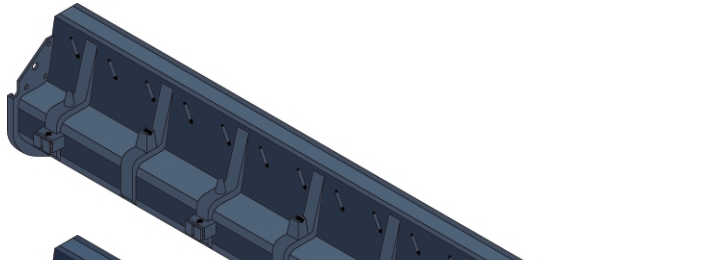


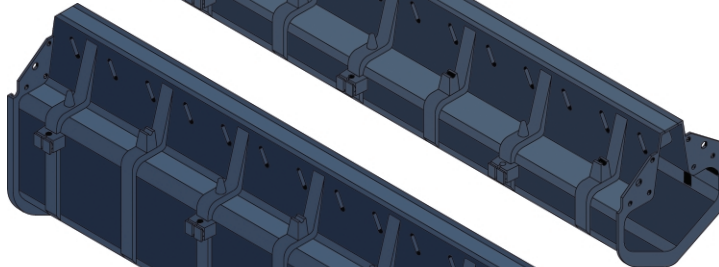
Z888 Hi-Cap High Capacity Drain System

26

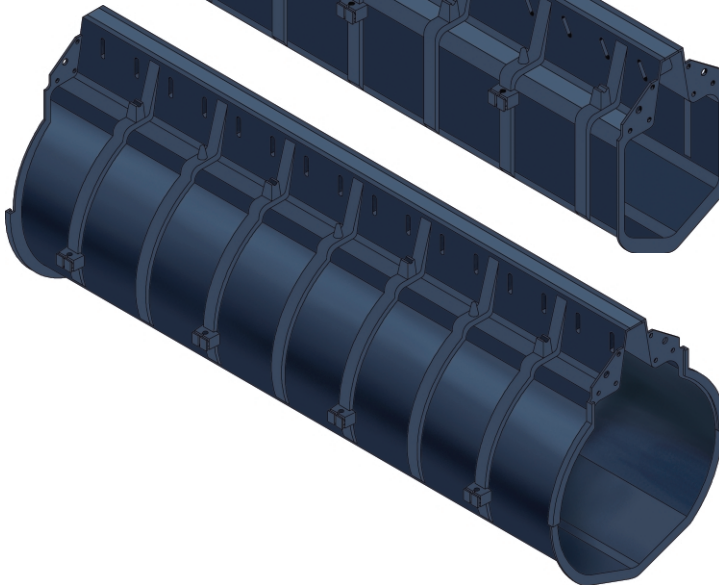
Z888-12 Hi-Cap



Z888-18 Hi-Cap



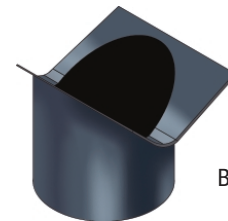
Z888-36 Hi-Cap



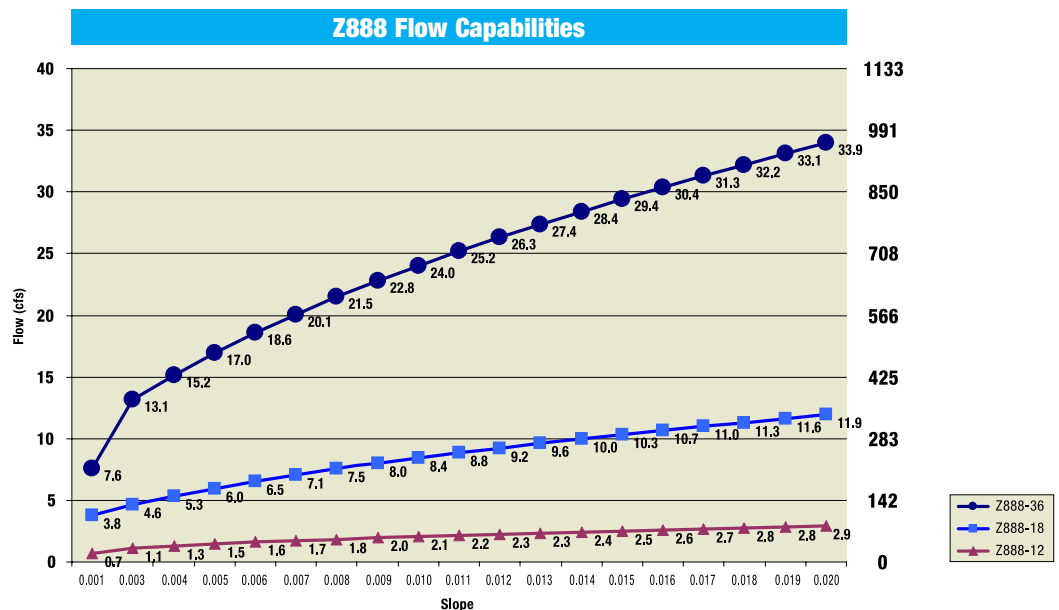
Closed End Cap



End Outlet



Bottom Outlet



Z888 Applications

Highways

Airports

Pools

Ports

Wineries

Parking Lots

Gas Stations

Industrial Parks

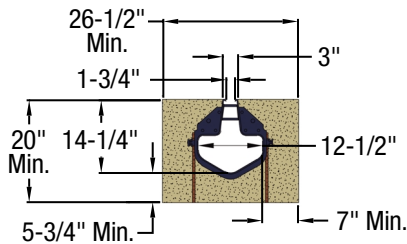
Airplane Hangars

Features and Benefits

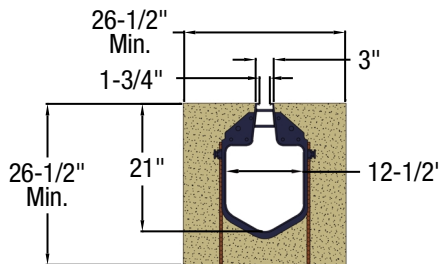
- **80" Modular Sections** – Allows quick and easy assembly, straighter installation.
- **"V" Shaped Bottom** – Better flow rate, less solids build-up.
- **Smooth Polyethylene Interior** – 0% water absorption and superior chemical resistance.
- **Chemical Resistance** – Strong corrosion-resistant material.
- **Positive Mechanical Joint Connection** – Keeps trench system straight, rigid, and liquid tight.
- **Tie Down Leveling Device Every 20"** – Positive anchoring to place and set installation to the desired elevation.
- **Load Distribution** – Rebar stances ensure that installation becomes a solid structure in concrete and able to withstand high traffic loads.
- **Integral Protective "Zip Strip"** – Keeps body clean of debris and materials during installation.
- **Extra-Heavy-Duty Frame** – Optional extra-heavy-duty top frame or heavy-duty ductile iron frame complete with anchor studs for additional protection when needed.

Installation Specification

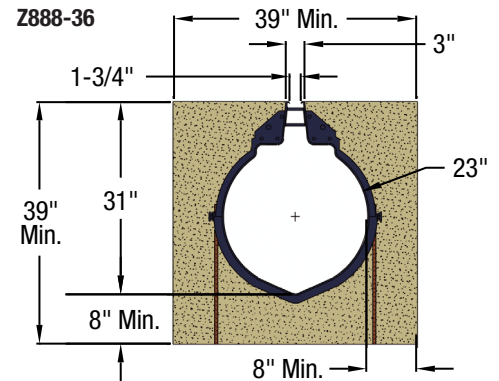
Z888-12



Z888-18



Z888-36



Z888 System Highlights



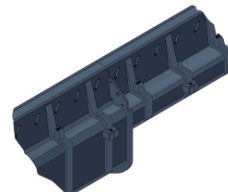
Support Antiflotation
Rebar Clips



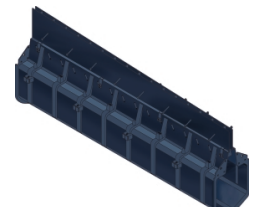
Mechanical Overlap
Connection



Integral
"Zip Strip"



Transition



Pre-Sloped Frame

Engineering Specification Slot drain shall be 80" long, Z888-12 (14-1/4" deep and 12" wide); Z888-18 (21" deep and 12" wide); or Z888-36 (31" deep and 23" wide). Slot shall be 1-3/4" wide and have spacer bars at 5" intervals to keep sides of slot apart. Drain shall be made of Linear Low Density Polyethylene (LLDPE). Drain shall have tongue-and-groove interlocking ends and clips molded into the sides of the channel to accommodate vertical rebar for positioning and anchoring purposes. Drain shall be available with a choice of pedestrian, bicycle, FAA, and/or H-20 grates. End outlets, bottom outlets, and side outlets shall be available in 4", 6", 8", 12", 18", 24", and 36" diameters. Twenty-four-inch long cleanout sections shall be available with removable ductile iron grate. Slot drain shall be Flo-Thru model Z888-12, Z888-18, or Z888-36.