

## Zurn Flo-Thru Systems Features & Advantages

- Durable and lightweight systems
- Loading capabilities for airports, forklifts, and ADA/pedestrian needs
- Pre-engineered modular channels
- Breadth of products to meet needs
- Variety of gratings
- Engineering assistance and CAD layouts available at no additional charge

## Trench Drain Systems

- Perma-Trench – 6" and 12" wide pre-sloped polyethylene structural composite systems; catch basins, shallow non-sloped and radiused channel systems
- Hi-Cap – Slotted linear low density polyethylene drainage consisting of three different sizes
- Flo-Thru – 6", 12" and 24" wide pre-sloped fiberglass systems and catch basins
- Sani-Flo – 6", 12" slotted stainless steel drainage systems, catch basins, plus custom trenches
- Frame & Grates – 6", 8", 10", 12", 14", 18", 20", 24", and 26" availability for cast-in-place installations

# Perma-Trench®

## Z886 ENGINEERING SPECIFICATION

Zurn Z886 6" [152 mm] wide pre-sloped trench drainage system. High density polyethylene structural composite drain channel with .75% bottom slope. All sections are 80-inch modular lengths with integral top frame, interlocking ends and radiused bottom. Combination tie-down/ leveling devices at 20-inch intervals. Furnished with heavy-duty, Dura-Coated cast iron grate unless otherwise specified.



Trench drain is shown with -HD heavy-duty frame option for dynamic loads.

Trench	Overall Depth		Max. Flow Rate			Approx. Wt (Less grate)			
	C Minimum inches	D Maximum mm	GPM	LPS	LPM	Lbs.	Kg.		
8601	3.5	88.9	4.1	104.1	93	6	352	14	6.2
8602	4.1	104.1	4.7	119.4	122	8	463	15	6.8
8603	4.7	119.4	5.3	134.6	152	10	576	16	7.4
8603N	5.3	134.6	5.3	134.6	-	-	-	17	7.7
8604	5.3	134.6	5.9	149.9	183	12	692	18	8.3
8605	5.9	149.9	6.5	165.1	214	13	809	20	8.9
8606	6.5	165.1	7.1	180.3	245	15	927	21	9.5
8606N	7.1	180.3	7.1	180.3	-	3	-	22	10.0
8607	7.1	180.3	7.7	195.6	276	17	1,045	23	10.6
8608	7.7	195.6	8.3	210.8	308	19	1,164	25	11.2
8609	8.3	210.8	8.9	226.1	339	21	1,284	26	11.8
8610	8.9	226.1	9.5	241.3	371	23	1,404	27	12.4
8611	9.5	241.3	10.1	256.5	403	25	1,524	29	13.0
8612	10.1	256.5	10.7	271.8	435	27	1,645	30	13.6
8612N	10.7	271.8	10.7	271.8	-	-	-	30	13.6
8613	10.7	271.8	11.3	287.0	467	29	1,766	31	14.2
8614	11.3	287.0	11.9	302.3	498	31	1,887	33	14.8
8615	11.9	302.3	12.5	317.5	530	33	2,008	34	15.4

Estimated flow rates for each trench system have been provided as a guide for proper system selection. Actual field conditions such as topographical characteristics, outlet restrictions, etc., may cause flow rates to differ from the above rates.

## Z882 ENGINEERING SPECIFICATION

Zurn Z882 12" [305 mm] wide pre-sloped trench drainage system. High density polyethylene structural composite drain channel with 1.04% (1/8" [3.18 mm] per foot) bottom slope. All sections are modular 8-foot [2.45 M] lengths with interlocking ends and radiused bottom. Complete with heavy-duty, Dura-Coated steel frame with anchor studs, combination anchor tabs/leveling devices at appropriate locations and extra heavy-duty ductile iron grates with stainless steel lockdown hardware.



Trench	Overall Depth		Max. Flow Rate			Approx. Wt (Less grate)			
	C Minimum inches	D Maximum mm	GPM	LPS	LPM	Lbs.	Kg.		
8201	6.25	158.7	7.25	184.1	557	35	2,107	68	30.8
8202	7.25	184.1	8.25	209.5	774	49	2,928	68	30.8
8203	8.25	209.5	9.25	234.9	999	63	3,783	70	31.8
8203N	9.25	234.9	9.25	234.9	-	-	-	71	32.2
8204	9.25	260.3	10.25	234.9	1,232	78	4,662	72	32.7
8205	10.25	288.3	11.25	288.3	1,468	93	5,558	75	34.0
8206	11.25	311.1	12.25	311.1	1,709	108	6,467	77	34.9
8206N	12.25	336.5	12.25	336.5	-	-	-	78	35.4
8207	12.25	336.5	13.25	336.5	1,951	123	7,386	79	35.8
8208	13.25	361.9	14.25	361.9	2,196	139	8,313	80	36.3
8209	14.25	387.3	15.25	387.3	2,443	154	9,246	83	37.7
8209N	15.25	412.7	15.25	412.7	-	-	-	84	38.1
8210	15.25	412.7	16.25	412.7	2,691	170	10,184	85	38.6
8211	16.25	438.1	17.25	463.5	2,940	185	11,126	87	39.5
8212	17.25	463.5	18.25	488.9	3,189	201	12,072	89	40.4

Estimated flow rates for each trench system have been provided as a guide for proper system selection. Actual field conditions such as topographical characteristics, outlet restrictions, etc., may cause flow rates to differ from the above rates.

## Z883 ENGINEERING SPECIFICATION

Zurn Z883 6" [152mm] wide shallow trench drain system. Polypropylene structural composite drain channel with 3.5" depth. All sections are 40" modular lengths with integral top frame, interlocking ends, and radiused bottom. Combination tie-down/ leveling devices at 20-inch intervals. Furnished with heavy-duty, Dura-Coated cast iron grate unless otherwise specified.



## Z884 ENGINEERING SPECIFICATION

Zurn Z884 4" wide trench drain system. High-density polypropylene structural composite trench drain channel with 3" depth. All sections are 40" modular lengths with integral topframe, integral rebar clips, interlocking ends and radiused bottom. 4" wide heelproof high-density polyethylene grate.



## Z887 ENGINEERING SPECIFICATION

Zurn Z887 catch basin (specify size). High-density polyethylene body, integral frame and heavy-duty, Dura-Coated cast iron grate.

Z887 Catch Basins:  
 6" x 20" [152 mm x 508 mm]  
 12" x 24" [305 mm x 610 mm]  
 24" x 24" [610 mm x 610 mm]



## Z888-12 ENGINEERING SPECIFICATION



The Zurn Z888-12 12" [305 mm] corrugated steel equivalent 1-1/2" wide slotted High Capacity trench drain system. Linear low-density polyethylene modular drain channel with smooth, non-stick, non-corrosive interior and 0% water absorption. 80" [2 m] modular sections with integral top frames, mechanically interlocking joints and smooth radiused interior. Integral tie-down/leveling devices at 20" [508 mm] intervals and load distribution rebar stances for application of continuous lengths of rebar for structural integrity.

## Z888-18 ENGINEERING SPECIFICATION



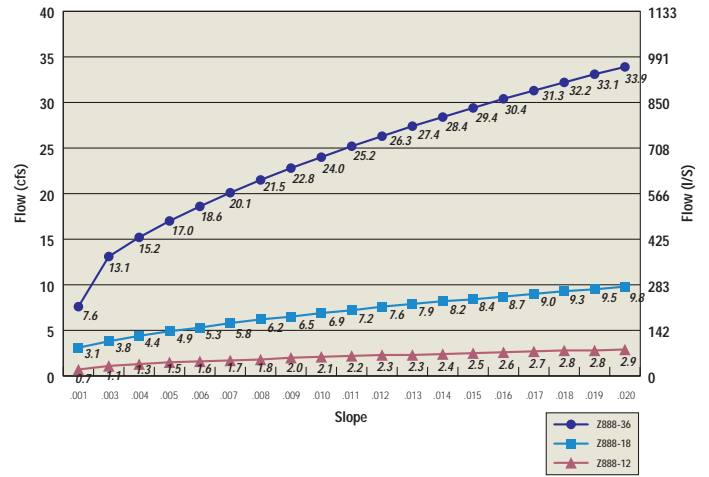
The Zurn Z888-18 18" [457 mm] corrugated steel equivalent 1-1/2" wide slotted High Capacity trench drain system. Linear low-density polyethylene modular drain channel with smooth, non-stick, non-corrosive interior and 0% water absorption. 80" [2 m] modular sections with integral top frames, mechanically interlocking joints and smooth radiused interior. Integral tie-down/leveling devices at 20" [508 mm] intervals and load distribution rebar stances for application of continuous lengths of rebar for structural integrity.

## Z888-36 ENGINEERING SPECIFICATION



The Zurn Z888-36 36" [914 mm] corrugated steel equivalent 1-3/4" wide slotted High Capacity trench drain system. Linear low-density polyethylene modular drain channel with smooth, non-stick, non-corrosive interior and 0% water absorption. 80" [2 m] modular sections with integral top frames, mechanically interlocking joints and smooth radiused interior. Integral tie-down/leveling devices at 20" [508 mm] intervals and load distribution rebar stances for application of continuous lengths of rebar for structural integrity.

## Z888 Flow Capabilities



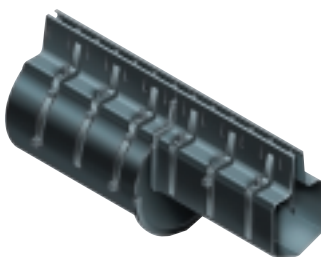
## Z889-18-HPD CLEANOUT PORT

For cleanout capabilities within the run.



## Z888-T TRANSITION

For transition from one system to another within the high capacity line.



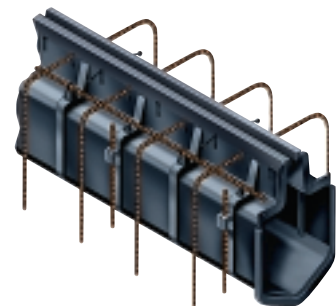
## Z888-PSF PRE-SLOPE

Pre-sloped to customer specification (call for details).



## Z888-DYN AIRPORT FRAME

For airports or other dynamic situations.



# Other Trench Systems

## Flo-Thru®

### ENGINEERING SPECIFICATION

Zurn Z806 6" [152 mm] wide pre-sloped trench drainage system. Glass-filled polyester fiberglass drain channel with .75% bottom slope. All sections are modular 10-foot [3.05 M] lengths with interlocking ends. Complete with heavy-duty, Dura-Coated steel frame with anchor studs, combination anchor tabs/leveling devices at appropriate locations and heavy-duty cast iron grate with stainless steel lockdown hardware.



Shown is the Z806.

### FLO-THRU SYSTEMS AVAILABLE

Z806	6" Channel
Z812	12" Channel
Z817	Catch Basin
Z824	24" Channel

### ENGINEERING SPECIFICATION

Zurn Z812 12" [305 mm] wide pre-sloped trench drainage system. Glass-filled polyester fiberglass drain channel with 1.04% (1/8" [3.18 mm] per foot) bottom slope. All sections are modular 10-foot [3.05 M] lengths with interlocking ends. Complete with heavy-duty, Dura-Coated steel frame with anchor studs, combination anchor tabs/leveling devices at appropriate locations and extra heavy-duty ductile iron grates with stainless steel lockdown hardware.



Shown is the Z812.

## Sani-Flo®

### ENGINEERING SPECIFICATION

The Zurn Sani-Flo line is composed of stainless steel trench drains and catch basins. Custom sizes are available from the factory.



Shown is the Z890.

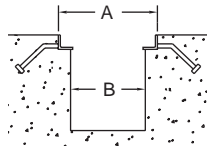
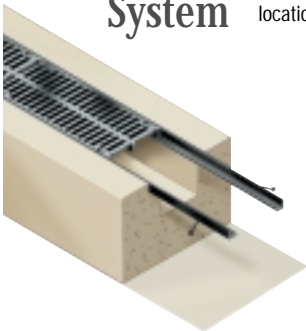
### SANI-FLO SYSTEMS AVAILABLE

Z890	6" Channel
Z891	Slotted Channel
Z895	12" Channel
Z897	Catch Basin

## Frame & Grate System

### ENGINEERING SPECIFICATION

The Zurn 700 Series frame and grate systems are 10-foot (5-foot lengths with the Z724) long Dura-Coated components with 3" nelson stud anchors at appropriate locations. Complete with heavy-duty grating.



Trench	Dimension "A"		Dimension "B"	
	inches	mm	inches	mm
Z706	6	152	4	102
Z708	8	203	6	152
Z712	12	305	9	229
Z714	14	356	11	279
Z718	18	457	14.5	368
Z720	20.75	527	17.25	438
Z724	24	610	20.5	520
Z726	26.75	679	23.25	591

### FRAME & GRATE SYSTEMS AVAILABLE

Z706	6" System
Z708	8" System
Z712	12" System
Z714	14" System
Z718	18" System
Z720	20" System
Z724	24" System
Z726	26" System

Shown is the Z712.



**ZURN PLUMBING PRODUCTS GROUP**  
 FLO-THRU OPERATION  
 2855 GIRTS ROAD  
 JAMESTOWN, NY, U.S.A. 14701  
 PHONE: 716/665-1132  
 FAX: 716/665-1135  
 WEBSITE: www.zurn.com

In Canada Call:  
**ZURN INDUSTRIES LIMITED**  
 3544 NASHUA DRIVE  
 MISSISSAUGA, ONTARIO L4V 1L2  
 PHONE: 905/405-8272  
 FAX: 905/405-1292

Reg™ US Patent and TM Office  
 Printed in the U.S.A.  
 Form No. FT665, 3/03