



ZURN RETROFLUSH

TROUBLE-SHOOTING GUIDE





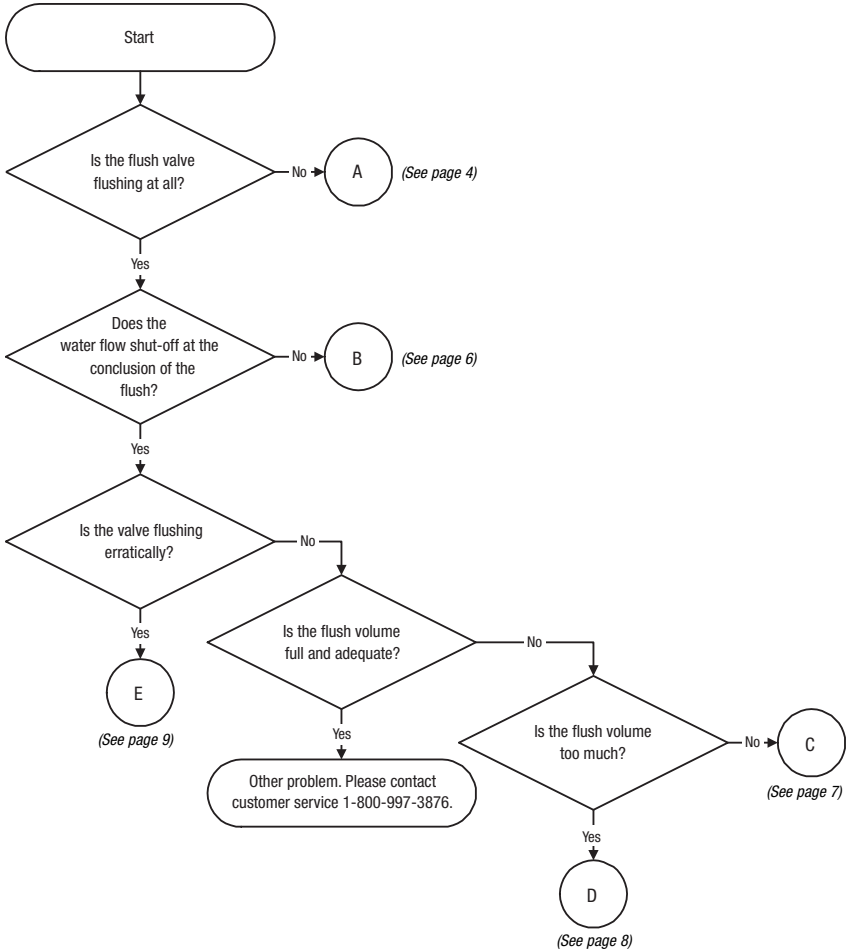
The following is a flow chart to aid in troubleshooting the Zurn RetroFlush Sensor unit. The layout progresses through a step-by-step diagnosis. If you have any questions on the flow chart, please call 1-800-997-3876 for further assistance.

Table Of Contents

Master Flowchart	3
A. Valve Not Flushing	4-5
B. Valve Continuously Flushing	6
C. Flush Volume Too Low	7
D. Flush Volume Too High	8
E. Valve Flushing Intermittently	9
F. Solenoid Valve Diagnostic	10
Action Item Instructions	11
<i>Turning the water supply on or off.</i>	
<i>Replace the batteries and/or battery holder.</i>	
<i>Press the reset button.</i>	
<i>Solenoid valve replacement.</i>	
<i>Diaphragm orifice inspection.</i>	
<i>Kit configuration inspection.</i>	

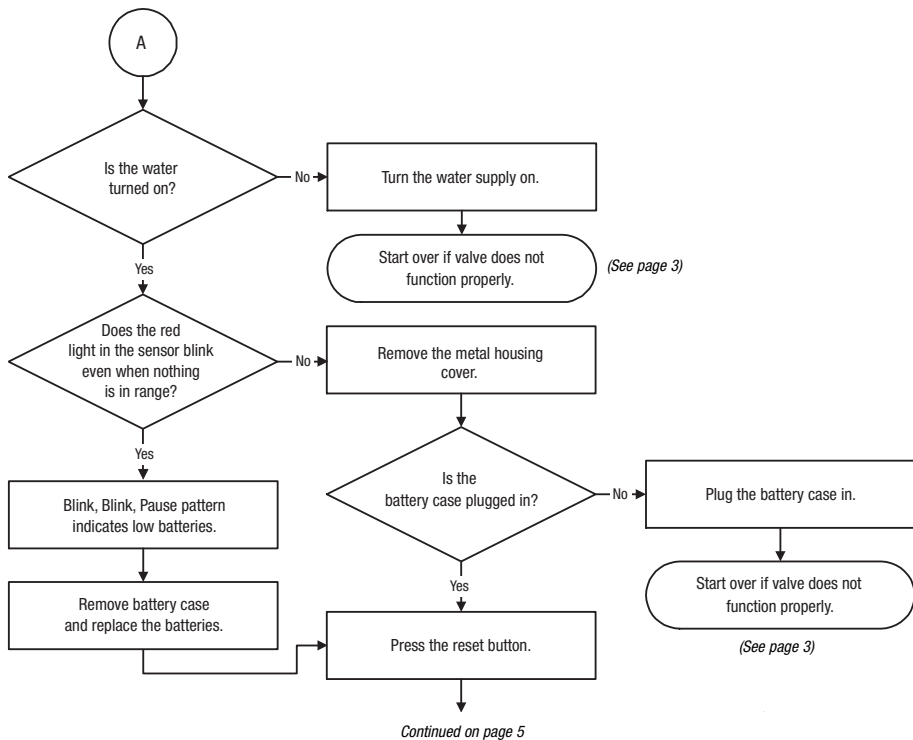


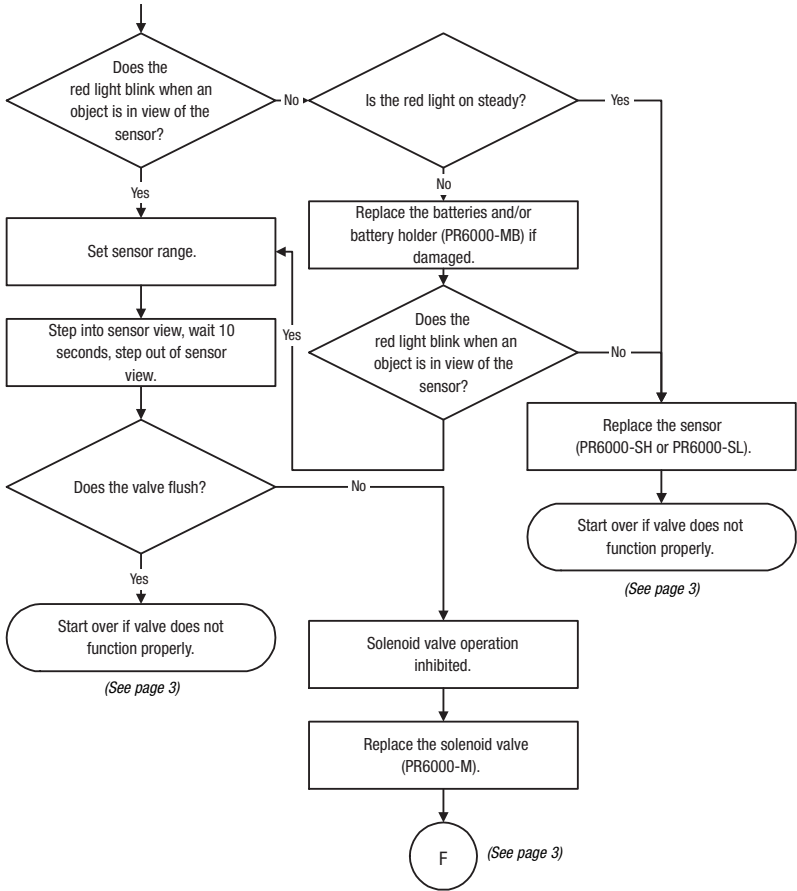
Master Flowchart



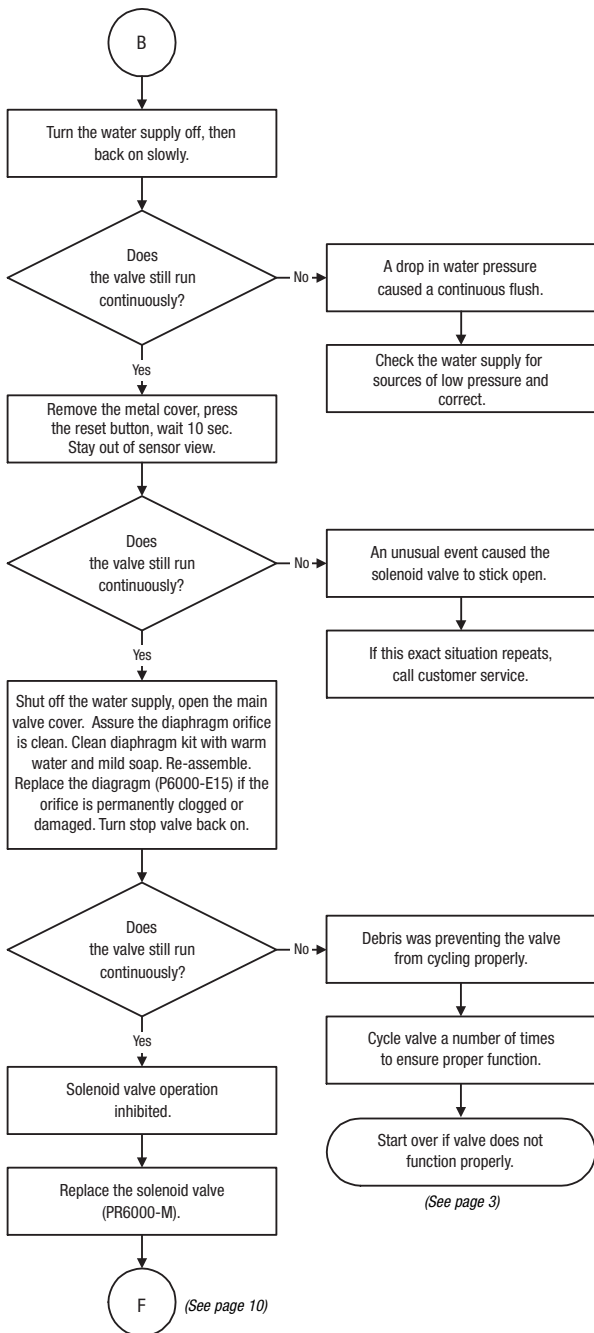


A. Valve Not Flushing

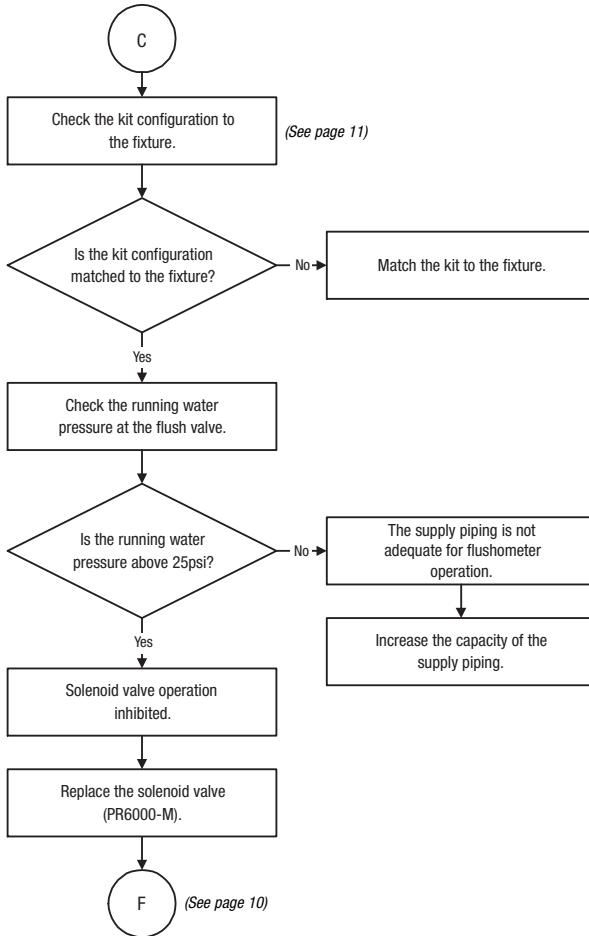




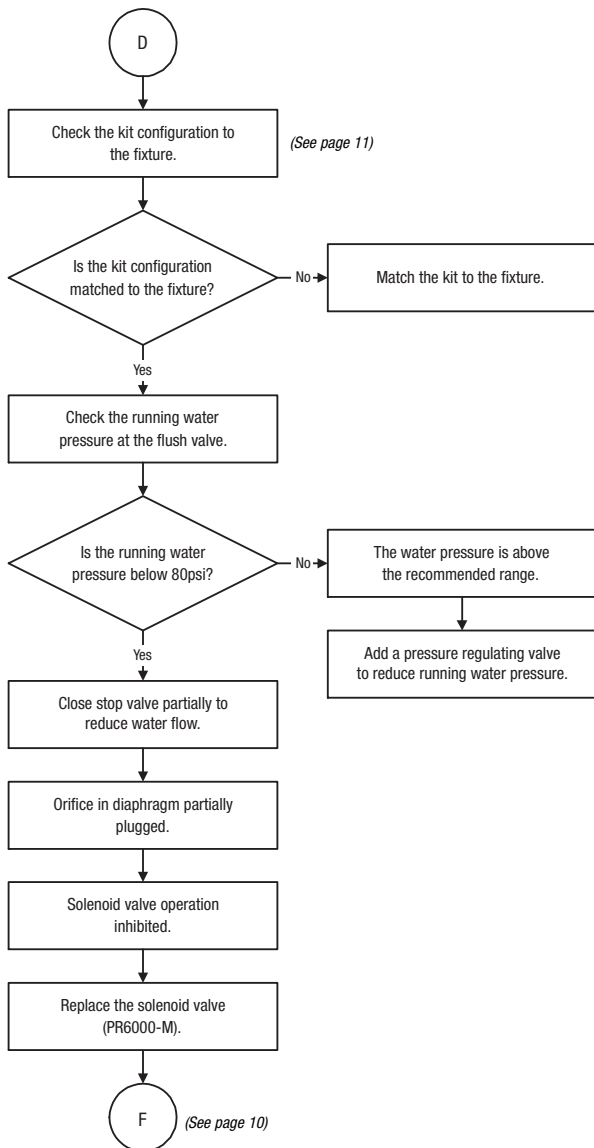
B. Valve Continuously Flushing



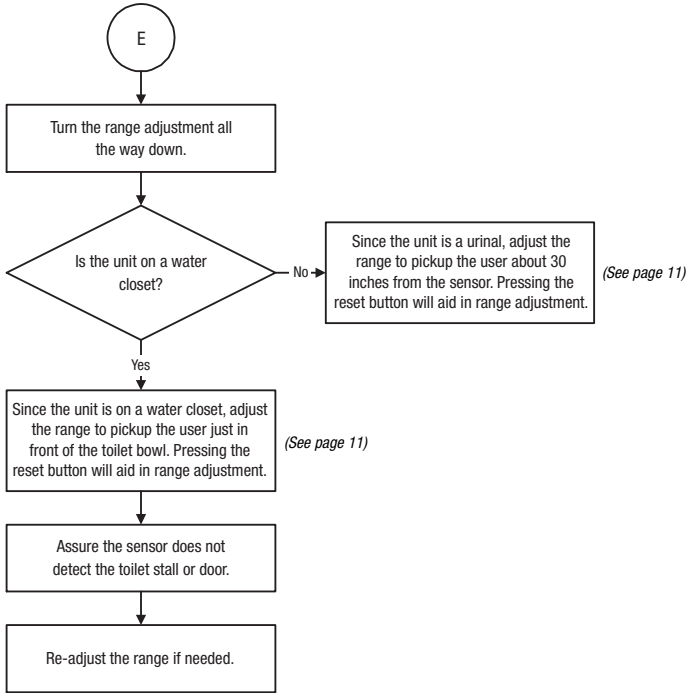
C. Flush Volume Too Low



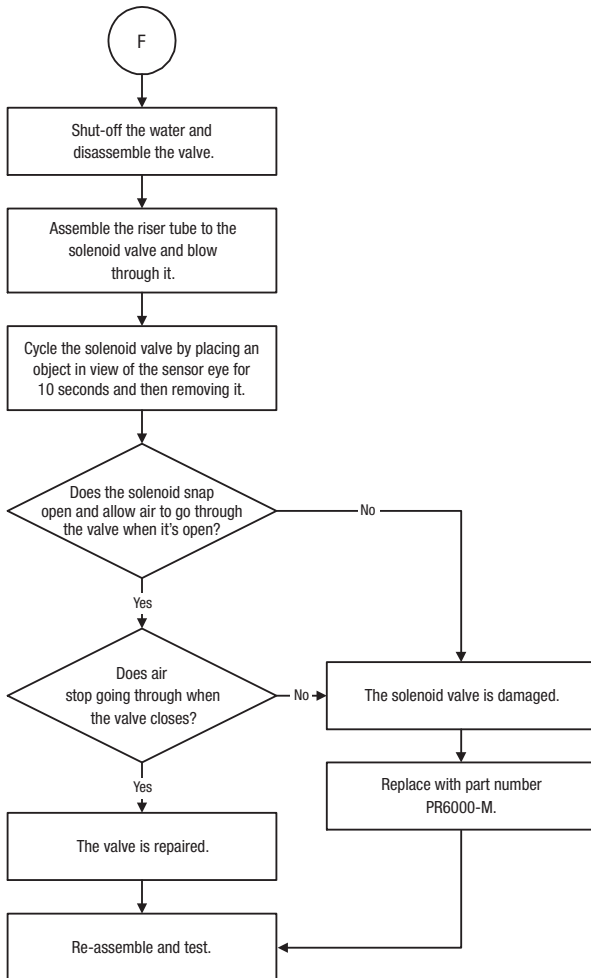
D. Flush Volume Too High



E. Valve Flushing Intermittently



F. Solenoid Valve Diagnostic

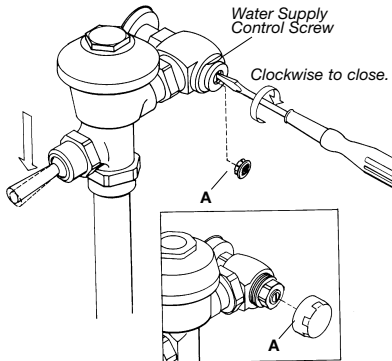




Action Item Instructions

Turning the water supply on or off.

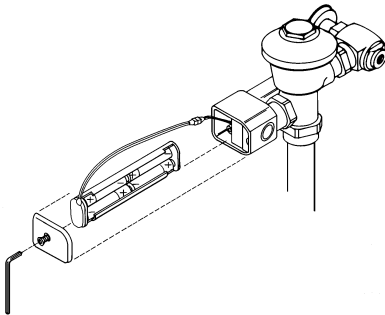
The water supply is controlled at the stop valve. Remove any decorative covers, and adjust the water supply control screw with a flat bladed screwdriver.



Stop Cover varies.
Picture shown is most common.

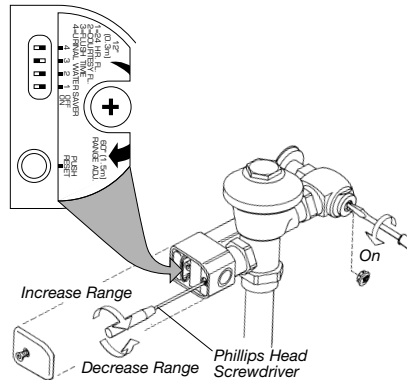
Replace the batteries and/or battery holder.

Remove the metal cover with the vandal-resistant hex key (PR6000-W). Assure the white connector of the battery holder is plugged into the white connector of the sensor. If the battery holder is damaged, replace with PR6000-MB.



Press the reset button.

The reset button is located on the sensor case. Press and hold for one second, then release to reset the sensor.



Solenoid valve replacement.

The solenoid is critical to the flush valve function. It may be replaced with part number PR6000-M. Complete instructions are provided with this kit.

Diaphragm orifice inspection.

The diaphragm orifice is critical to the flush valve function. If the orifice is permanently clogged or damaged, it may be replaced with part number P6000-E15.

Kit configuration inspection.

Kit configuration is critical to the proper flush volume. Assure the fixture requirements are matched to the kit configuration.

	Water Closet			Urinal		
	1.6	3.5	4.5	1.0	1.5	3.0
Flow Ring						
Volume Control	Yellow	White	Black	Blue	Green	Orange
Sensor Switch #3	On	Off		On	Off	



ZURN INDUSTRIES, INC.
COMMERCIAL BRASS OPERATION
5900 ELWIN BUCHANAN DRIVE
SANFORD, NC, U.S.A. 27330
PHONE: 1-800-997-3876
FAX: 919/775-3541
WEBSITE: www.zurn.com

Form No. FV1138, 3/00
