



LD0217 CUSTOMER GUIDE

Linear Drainage and Utility Systems

Effective February 1, 2017
Replaces all previous Price Lists

1.855.ONE.ZURN | ZURN.COM

LINEAR DRAINAGE

PERMA-TRENCH

Z886 6" WIDE TRENCH DRAIN SYSTEM	2
Z882 12" WIDE TRENCH DRAIN SYSTEM	4
Z874-12 TRENCH DRAIN SYSTEM	5
Z874-18 TRENCH DRAIN SYSTEM	6
Z874-21 TRENCH DRAIN SYSTEM	7
Z874-U-XX-LDRA LIGHT-DUTY UTILITY TRENCH WITH ALUMINUM FRAME, CLAMP, AND SOLID COVER	8
Z874-U-XX-LDRS LIGHT-DUTY UTILITY TRENCH WITH ALUMINUM FRAME AND CLAMP WITH SOLID STEEL COVER	8
Z874-U-XX-HD HEAVY-DUTY UTILITY TRENCH WITH STEEL FRAME AND DUCTILE IRON SOLID COVER	8
Z880 2-1/2" WIDE TRENCH DRAIN SYSTEM	9
Z884 4-3/4" WIDE SHALLOW DRAIN SYSTEM	9
Z883 6" WIDE SHALLOW TRENCH DRAIN SYSTEM	10
Z887 CATCH BASIN	11

FLO-THRU

Z806 6" WIDE TRENCH DRAIN SYSTEM	12
Z812 12" WIDE TRENCH DRAIN SYSTEM	14
Z817 CATCH BASIN	15
ZF806 6" WIDE TRENCH DRAIN SYSTEM	16
ZF812 12" WIDE TRENCH DRAIN SYSTEM	18
ZF817 CATCH BASIN	19

SLOT DRAIN/HI-CAP

Z888-4 SLOTTED DRAINAGE SYSTEM	20
Z888-6 SLOTTED DRAINAGE SYSTEM	20
Z888-8 SLOTTED DRAINAGE SYSTEM	20
Z888-12,-18,-36 HIGH CAPACITY TRENCH DRAIN SYSTEM SLOTTED DRAINAGE SYSTEM	21
Z889-12,-18,-36 HIGH CAPACITY CLEANOUT PORT	21

ALUMINUM TRENCH

ZA880-156 EXTRUDED ALUMINUM TRENCH DRAIN SYSTEM	22
ZA880-300A EXTRUDED ALUMINUM TRENCH DRAIN SYSTEM (PRICING WITHOUT GRATE)	22
ZA880-300B EXTRUDED ALUMINUM TRENCH DRAIN SYSTEM (PRICING WITHOUT GRATE)	22
ZA880-340 EXTRUDED ALUMINUM TRENCH DRAIN SYSTEM (PRICING WITHOUT GRATE)	22

SANI-FLO

ZS880 STAINLESS STEEL LINEAR SHOWER DRAIN	23
Z890 6" STAINLESS STEEL TRENCH DRAIN SYSTEM	24
Z895 12" STAINLESS STEEL TRENCH DRAIN SYSTEM	25
Z899 ELEVATOR TRENCH DRAIN SYSTEM	26
Z891 STAINLESS STEEL SLOTTED DRAINAGE SYSTEM	26
Z897 STAINLESS STEEL CATCH BASIN	27

FRAME AND GRATE SYSTEMS

Z706 6" WIDE FRAME AND GRATE SYSTEM	28
Z712 12" WIDE FRAME AND GRATE SYSTEM	29
Z717 17" WIDE FRAME AND GRATE SYSTEM	30
Z723 23" WIDE FRAME AND GRATE SYSTEM	30
Z726 26" WIDE FRAME AND GRATE SYSTEM	31

OIL SEPARATORS

Z885 POLYETHYLENE OIL SEPARATOR	32
--	-----------

TECHNICAL INFORMATION

GENERAL TERMS AND CONDITIONS	36
------------------------------	-----------

PLEASE NOTE

All products require a minimum of 4" new concrete encasement.

POA = Price On Availability

‡ Indicates grate will be shipped unpainted. For an additional charge, Zurn will paint the grates. Please contact your customer service representative for pricing.



Denotes products made in the U.S.A.

Z886 6" WIDE TRENCH DRAIN SYSTEM



Standard Length: 80" (6.67')
Standard Grate Included: DGC

ENGINEERING SPECIFICATION

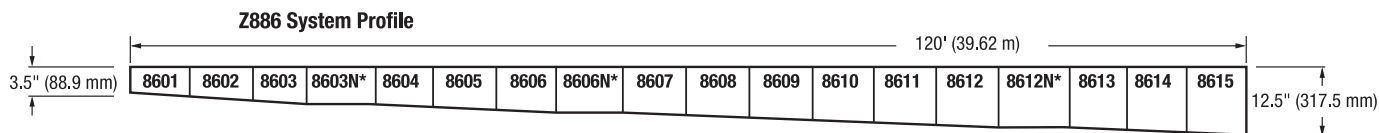
Channels shall be 80" long, 6" wide, and have a 4" wide throat. Modular channel sections shall be made of High Density Polyethylene (HDPE), have interlocking ends, and radiused bottom. Channel shall be provided either flat (neutral) or with a .75% built-in slope. Channels shall be available with inverts ranging from 3.5" to 12.50". Channels shall have clips molded into the sides of the channel to accommodate vertical rebar for positioning and anchoring purposes. Choices of class A thru F grates shall be available with H-20 and/or FAA load ratings and/or ADA compliance with mechanical lockdown devices. End caps and catch basins shall be available to complement the channels and grates. End outlets, bottom outlets, and side outlets shall be available in 2", 3", 4", and 6" diameters. Trench drain shall be Flo-Thru model Z886.

Trench Number	Shallow Invert		Deep Invert		Flow Rate		
	In.	mm	In.	mm	cfs	gpm	lps
8601	3.50	89	4.10	104	0.207	93	6
8602	4.10	104	4.70	119	0.272	122	8
8603	4.70	119	5.30	135	0.339	152	10
8603N	5.30	135	5.30	135	-	-	-
8604	5.30	135	5.90	150	0.408	183	12
8605	5.90	150	6.50	165	0.477	214	14
8606	6.50	165	7.10	180	0.546	245	16
8606N	7.10	180	7.10	180	-	-	-
8607	7.10	180	7.70	196	0.615	276	17
8608	7.70	196	8.30	211	0.686	308	19
8609	8.30	211	8.90	226	0.755	339	21
8610	8.90	226	9.50	241	0.827	371	23
8611	9.50	241	10.1	257	0.898	403	26
8612	10.10	257	10.70	272	0.969	435	28
8612N	10.70	272	10.70	272	-	-	-
8613	10.70	272	11.30	287	1.041	467	30
8614	11.30	287	11.90	302	1.11	498	32
8615	11.90	302	12.50	318	1.181	530	34

PREFIX	DESCRIPTION	NO. OF GRATES ANCHOR STRAPS	TRENCH NUMBERS	PER FOOT
Z*	80" High Density Polyethylene (HDPE) Channel with Ductile Iron Grate - Class C with Grate Lockdown Hardware*	4	8601 to 8615	94.00

OUTLET ADAPTERS		ADD/EACH
-E1	Closed End Cap	25.00
-E2	2" No-Hub End Outlet	25.00
-E3	3" No-Hub End Outlet	25.00
-E4	4" No-Hub End Outlet	25.00
-E6	6" No-Hub End Outlet	25.00
-U2	2" No-Hub Bottom Outlet	25.00
-U3	3" No-Hub Bottom Outlet	25.00
-U4	4" No-Hub Bottom Outlet	25.00
-U6	6" No-Hub Bottom Outlet	25.00

STANDARD GRATE OPTIONS		ADD/FOOT
-BDC	Black Acid Resistant Epoxy Coated Ductile Grate-Class C	37.00
-BDE	Black Acid Resistant Epoxy Coated Ductile Grate-Class E	52.00
-BG	Galvanized Ductile Iron Bar Grate - Class C	23.00
-DBG	Ductile Iron Cast Bar Grate - Class C	14.00
-DC	Ductile Iron Solid Cover - Class C	17.00
-DGC	Ductile Iron Slotted Grate - Class C	*
-DGE	Ductile Iron Slotted Grate - Class E	10.00
-DGE-NA	Ductile Iron Slotted Grate - Class E - North American	15.00
-FGF	Ductile Iron Frame and Slotted Grate - Class F	55.00
-GDC	Galvanized Ductile Grate - Class C	14.00
-GDE	Galvanized Ductile Grate - Class E	19.00
-GFG	Galvanized Ductile Frame and Slotted Grate - Class F	68.00
-GG	Fiberglass Grate - Class A	55.00
-GHPD	Galvanized Heel-Proof Ductile Grate - Class B	57.00
-GHPDE	Galvanized Heel-Proof Ductile Grate - Class E	62.00
-HPD	Heel-Proof Longitudinal Ductile Grate - Class B	14.00
-HPDE	Heel-Proof Longitudinal Ductile Grate - Class E	35.00
-HPP	Heel-Proof Polyethylene Grate - Class A	6.00
-LD	Longitudinal Ductile ADA Grate - Class B	9.00
-RFGC	Reinforced Galvanized Steel Slotted Grate - Class C	12.00
-RFSC	Reinforced Stainless Steel Slotted Grate - Class C	90.00
-RPGC	Reinforced Galvanized Perforated Grate - Class C	12.00
-RPGRC	Reinforced Galvanized Perforated Reverse Punch Anti-Slip - Class C	12.00
-RPSC	Reinforced Stainless Steel Perforated ADA Grate - Class C	90.00
-RPSRC	Reinforced Stainless Steel Perforated Reverse Punch Anti-Slip Grate - Class C	90.00



Z886 6" WIDE TRENCH DRAIN SYSTEM

DECORATIVE GRATE OPTIONS		ADD/FOOT
-BCD	Bronze Circular Decorative Grate - Class A	286.00
-BDD	Bronze Diagonal Decorative Grate - Class A	286.00
-DCD	Ductile Circular Decorative Grate - Class C	17.00
-DDD	Ductile Diagonal Decorative Grate - Class A	17.00
-DOG	Ductile Decorative Grate - Class B	17.00
-DTW	Ductile Iron Tidal Wave Grate - Class C	21.00
-DWV	Ductile Wave Decorative Grate - Class A	17.00
-GMG	Galvanized Steel Mesh Grate - Class B	134.00
-HPB	Heel-Proof Bronze Slotted Grate - Class A	286.00
-HPS	Heel-Proof Stainless Steel Slotted Grate - Class A	286.00
-SBG	Stainless Steel Bar Grate - Class E	286.00
-SCD	Stainless Steel Circular Decorative Grate - Class B	286.00
-SDD	Stainless Steel Diagonal Decorative Grate - Class B	286.00
-SMG	Stainless Steel Mesh Grate - Class B	116.00
-SOG	Stainless Steel Decorative Grate - Class B	286.00
MISCELLANEOUS OPTIONS		ADD/FOOT
-HDF	Extra-Heavy-Duty Frame Assembly with Anchor Studs and Grate Lockdown Hardware	34.00
-VP	Vandal-Proof Stainless Steel Center Lockdown	7.00
		ADD/EACH
-JC	Joint Connector	54.00



MADE IN THE U.S.A. (HIGHLIGHTED IN GRAY)

STANDARD GRATE OPTIONS		ADD/FOOT
-AWG	Aluminum Wire Grate - Class A	POA
-BDE-USA	Black Acid Resistant Epoxy Coated Ductile Grate - Class E	65.00
-DCE-USA	Ductile Solid Cover USA - Class E	52.00
-DGC-USA	Ductile Iron Slotted Grate - Class C	15.00
-DGE-USA	Ductile Iron Slotted Grate - Class E	22.00
‡ -FGF-USA	Ductile Iron Frame and Slotted Grate - Class F	62.00
-FS	Fabricated Stainless Steel Slotted Grate - Class A	25.00
-GDC-USA	Galvanized Ductile Grate - Class C	29.00
-GDE-USA	Galvanized Ductile Grate - Class E	33.00
-GFG-USA	Galvanized Ductile Frame and Slotted Grate - Class F	78.00
-GHPDE-USA	Galvanized Heel-Proof Ductile ADA Grate - Class E	82.00
‡ -HDD	Domestic Ductile Highway Grate - H20/H25 Non-Removable - Class C	29.00
-HPDE-USA	Heel-Proof Longitudinal Ductile Grate - Class E	54.00
‡ -HR	Ductile Iron Removable Grate/Frame System - H20/H25 - Class C	40.00
-PPC	Plastic Perforated Grate - Class C	65.00
-PS	Perforated Stainless Steel ADA Grate - Class A	25.00
-PSR	Stainless Steel Perforated Reverse Punch Anti-Slip ADA Grate - Class A	25.00
		DEDUCT/FOOT
-FG	Fabricated Galvanized Steel Slotted Grate - Class A	(9.00)
-PG	Perforated Galvanized Steel ADA Grate - Class A	(9.00)
-PGR	Galvanized Perforated Reverse Punch Anti-Slip ADA Grate - Class A	(9.00)
DECORATIVE GRATE OPTIONS		ADD/FOOT
-BZ	Bronze Decorative Grate - Class A	286.00
-NBZ-USA	Nickel Bronze Decorative Grate - Class A	385.00
-PDE-USA	Ductile Iron Perforated ADA Grate - Class E	152.00
-PVS	Paver Slot Grate - Class B	116.00
-PVSG	Galvanized Steel Paver Slot Grate - Class B	153.00
-PVSS	Stainless Steel Paver Slot Grate - Class B	257.00
-SWG	Stainless Steel Wire Grate - Class A	POA
MISCELLANEOUS OPTIONS		ADD/FOOT
-AVB	Aluminum Veneer Bronze Anodized Frame	14.00
-CBF	Black Acid Resistant Coated Top Frame	52.00
-HDF-USA	Extra-Heavy-Duty Frame Assembly with Anchor Studs and Grate Lockdown Hardware	45.00
-HDG	Galvanized Extra-Heavy-Duty Frame Assembly with Anchor Studs and Grate Lockdown Hardware	65.00
-HDS	Stainless Steel Extra-Heavy-Duty Frame Assembly with Anchor Studs and Grate Lockdown Hardware	103.00
-SVF	Type 304 Stainless Steel Top Veneer Frame	28.00
-SW	9" High Sidewall Extension (Per Pair)	42.00
		ADD/EACH
-DB	Bottom Dome Strainer	54.00
SERVICE CHARGES		ADD/EACH
Fabrication	45°; 90°; Tee; Side Outlet Fabs	254.00
	Cross Fabs	506.00
Cutting		65.00
Radiused Channel		POA

*Regularly furnished unless otherwise specified.

‡Indicates grate will be shipped unpainted. For an additional charge, Zurn will paint the grates. Please contact your customer service representative for pricing.

For additional product information, please visit www.zurn.com.

PERMA-TRENCH

FLO-THRU

ALUMINUM TRENCH

SLOT DRAIN/HI-CAP

SANI-FLO

FRAME AND GRATE SYSTEMS

OIL SEPARATORS

Z882 12" WIDE TRENCH DRAIN SYSTEM



Standard Length: 8'
Standard Grate Included: DGC

ENGINEERING SPECIFICATION

Channels shall be 8" long, 12" wide, and have a 9-1/4" wide throat. Modular channel sections shall be made of High Density Polyethylene (HDPE), have interlocking ends, and radiused bottom. Channel shall be provided with no slope (neutral) or with a 1.04% built-in slope. Channels shall be available with inverts ranging from 6.25" to 18.25". Channels shall have clips molded into the sides of the channel to accommodate vertical rebar for positioning and anchoring purposes. Choices of class A thru F grates shall be available with H-20 and/or FAA load ratings and/or ADA compliance with mechanical lockdown devices. A heavy-duty steel frame shall be provided to distribute weight between the grates and the HDPE channel. End caps and catch basins shall be available to complement the channels and grates. End outlets, bottom outlets, and side outlets shall be available in 4", 6", and 8" diameters. Trench drain shall be Flo-Thru model Z882.

Trench Number	Shallow Invert		Deep Invert		Flow Rate		
	In.	mm	In.	mm	cfs	gpm	lps
8201	6.25	159	7.25	184	1.241	557	35
8202	7.25	184	8.25	210	1.725	774	49
8203	8.25	210	9.25	235	2.226	999	63
8203N	9.25	235	9.25	235	-	-	-
8204	9.25	235	10.25	260	2.745	1232	78
8205	10.25	260	11.25	286	3.271	1468	93
8206	11.25	286	12.25	311	3.808	1709	108
8206N	12.25	311	12.25	311	-	-	-
8207	12.25	311	13.25	337	4.347	1951	123
8208	13.25	337	14.25	362	4.893	2196	139
8209	14.25	362	15.25	387	5.443	2443	155
8209N	15.25	387	15.25	387	-	-	-
8210	15.25	387	16.25	413	5.996	2691	170
8211	16.25	413	17.25	438	6.551	2940	186
8212	17.25	438	18.25	464	7.106	3189	202

PREFIX	DESCRIPTION	NO. OF GRATES ANCHOR STRAPS	TRENCH NUMBERS	PER FOOT
Z*	8' High Density Polyethylene (HDPE) Channel, Heavy-Duty Frame with Anchor Studs, Ductile Iron Grate - Class C with Lockdowns and Anchor Tabs	4	8201 to 8212	201.00
OUTLET ADAPTERS				ADD/EACH
-E1	Closed End Cap			54.00
-E4	4" No-Hub End Outlet			54.00
-E6	6" No-Hub End Outlet			54.00
-E8	8" No-Hub End Outlet			54.00
-U4	4" No-Hub Bottom Outlet			54.00
-U6	6" No-Hub Bottom Outlet			54.00
-U8	8" No-Hub Bottom Outlet			54.00
GRATE OPTIONS				ADD/FOOT
-BDC	Black Acid Resistant Epoxy Coated Ductile Grate - Class C			53.00
-BDE	Black Acid Resistant Epoxy Coated Ductile Grate - Class E			65.00
-BDF	Black Acid Resistant Ductile Grate - Class F			106.00
-BG	Galvanized Ductile Iron Bar Grate - Class D			23.00

GRATE OPTIONS		ADD/FOOT
-DC	Ductile Iron Solid Cover - Class E	52.00
* -DGC	Ductile Iron Slotted Grate - Class C (Four Corner Lockdown)	*
-DGE	Ductile Iron Slotted Grate - Class E	30.00
-DGF	Ductile Iron Slotted Grate - Class F	72.00
-GDC	Galvanized Ductile Slotted Grate - Class C	53.00
-GDE	Galvanized Ductile Slotted Grate - Class E	65.00
-GDF	Galvanized Ductile Slotted Grate - Class F	106.00
-GG	Fiberglass Grate - Class A	72.00
-GHPD	Galvanized Heel-Proof Ductile Grate - Class B	84.00
-GHPDE	Galvanized Heel-Proof Ductile ADA Grate - Class E	141.00
-HPD	Heel-Proof Ductile Slotted Grate - Class B	37.00
-HPDE	Heel-Proof Ductile ADA Grate - Class E	65.00
-RFGC	Reinforced Galvanized Steel Slotted Grate - Class C	162.00
-RFSC	Reinforced Stainless Steel Slotted Grate - Class C	401.00
-RPGC	Reinforced Galvanized Perforated ADA Grate - Class C	162.00
-RPGRC	Reinforced Galvanized Perforated Reverse Punch Anti-Slip ADA Grate - Class C	162.00
-RPSC	Reinforced Stainless Steel Perforated Grate - Class C	401.00
-RPSRC	Reinforced Stainless Steel Perforated Reverse Punch Anti-Slip Grate - Class C	401.00
-SBG-L	Stainless Steel Bar Grate - Class C	388.00

MISCELLANEOUS OPTIONS		ADD/FOOT
-VP	Vandal-Proof Center Lockdown	7.00
		ADD/EACH
-JC	Joint Connector	104.00

MADE IN THE U.S.A. (HIGHLIGHTED IN GRAY)

GRATE OPTIONS		ADD/FOOT
‡ -ADA-USA	Meets Americans with Disabilities Act Requirements - Class C	89.00
-BDE-USA	Black Acid Resistant Epoxy Coated Ductile Grate - Class E	122.00
‡ -DGC-USA	Ductile Iron Slotted Grate - Class C	84.00
‡ -DGE-USA	Ductile Iron Slotted Grate - Class E	98.00
-FG	Fabricated Galvanized Steel Slotted Grate - Class A	17.00
-FS	Fabricated Stainless Steel Slotted Grate - Class A	141.00
-GADA-USA	Galvanized Ductile ADA Slotted Grate - Class C	103.00
-GDC-USA	Galvanized Ductile Slotted Grate - Class C	98.00
-GDE-USA	Galvanized Ductile Slotted Grate - Class E	122.00
-GHPDE-USA	Galvanized Heel-Proof Ductile ADA Grate - Class E	154.00
-HPDE-USA	Heel-Proof Ductile ADA Grate - Class E	111.00
-PG	Galvanized Perforated Steel ADA Grate - Class A	17.00
-PGR	Galvanized Perforated Reverse Punch Anti-Slip ADA - Class A	17.00
-PS	Stainless Steel Perforated ADA Grate - Class A	141.00
-PSR	Stainless Steel Perforated Reverse Punch Anti-Slip ADA - Class A	141.00
-SSCD	Reinforced Stainless Steel Solid Cover - Class B	410.00

MISCELLANEOUS OPTIONS		ADD/FOOT
-CBF	Black Acid Resistant Coated Top Frame	37.00
-HDF-USA	Extra Heavy Duty Frame Assembly	68.00
-HDG	Galvanized Frame Assembly	37.00
-SF	Type 304 Stainless Steel Top Frame	198.00
-SW	Sidewall Extension - 11" High (Per Pair)	58.00

		ADD/EACH
-DB	Bottom Dome Strainer	72.00

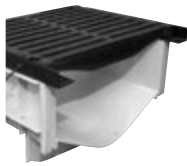
SERVICE CHARGES		ADD/EACH
Fabrication	- 45°; 90°; Tee; Side Outlet Fabs	508.00
	-Cross Fabs	1,014.00
Cutting		131.00

For additional product information, please visit www.zurn.com.

*Regularly furnished unless otherwise specified.

‡Indicates grate will be shipped unpainted. For an additional charge, Zurn will paint the grates. Please contact your customer service representative for pricing.

Z874-12 TRENCH DRAIN SYSTEM



Standard Length: 80" (6.67')
Standard Grate Included: DGC

ENGINEERING SPECIFICATION

Channels shall be 80" long, 17" wide, and have a 12" wide throat. Modular channel sections shall be made of High Density Polyethylene (HDPE), have interlocking ends, and radiused bottom. Channel shall be provided with no slope (neutral) or with a 1.00% built-in slope. Channels shall be available with inverts ranging from 9.25" to 34.21". Channels shall have clips attached to the frame to accommodate vertical rebar for positioning and anchoring purposes. Choices of class A thru F grates shall be available with H-20 and/or FAA load ratings and/or ADA compliance with mechanical lockdown devices. A heavy-duty steel frame shall be provided to distribute weight between the grates and the HDPE channel. End caps and catch basins shall be available to complement the channels and grates. End outlets, bottom outlets, and side outlets shall be available in 4", 6", and 8" diameters. Trench drain shall be Flo-Thru model Z874-12.

Trench Number	Shallow Invert		Deep Invert		Flow Rate		
	In.	mm	In.	mm	cfs	gpm	lps
1201P	9.250	235	10.082	256	3.306	1475	93
1202P	10.082	256	10.914	277	3.941	1758	111
1203P	10.914	277	11.746	298	4.589	2048	129
1204P	11.746	298	12.578	319	5.248	2341	148
1205P	12.578	319	13.41	341	5.915	2639	166
1205NP	13.410	341	13.410	341	-	-	-
1206P	13.410	341	14.242	362	6.589	2939	185
1207P	14.242	362	15.074	383	7.268	3243	205
1208P	15.074	383	15.906	404	7.953	3548	224
1209P	15.906	404	16.738	425	8.641	3855	243
1210P	16.738	425	17.57	446	9.333	4164	263
1211P	17.57	446	18.402	467	10.028	4474	282
1212P	18.402	467	19.234	489	10.726	4785	302
1213P	19.234	489	20.066	510	11.426	5098	322
1214P	20.066	510	20.898	531	12.128	5411	341
1215P	20.898	531	21.73	552	12.832	5725	361
1215NP	21.73	552	21.73	552	-	-	-
1216P	21.730	552	22.562	573	13.538	6040	381
1217P	22.562	573	23.394	594	14.244	6355	401
1218P	23.394	594	24.226	615	14.953	6671	421
1219P	24.226	615	25.058	636	15.662	6988	441
1220P	25.058	636	25.890	658	16.372	7304	461
1221P	25.89	658	26.722	679	17.084	7622	481
1222P	26.722	679	27.554	700	17.796	7940	501
1223P	27.554	700	28.386	721	18.509	8258	521
1224P	28.386	721	29.218	742	19.223	8576	541
1225P	29.218	742	30.05	763	19.937	8895	561
1225NP	30.05	763	30.05	763	-	-	-
1226P	30.05	763	30.882	784	20.652	9214	581
1227P	30.882	784	31.714	806	21.367	9533	601
1228P	31.714	806	32.546	827	22.083	9852	622
1229P	32.546	827	33.378	848	22.8	10172	642
1230P	33.378	848	34.21	869	23.517	10492	662

PREFIX	DESCRIPTION	NO. OF GRATES ANCHOR STRAPS	TRENCH NUMBERS	PER FOOT
Z*	80" High Density Polyethylene (HDPE) Channel, Heavy-Duty Frame with Anchor Studs, Ductile Iron Grate - Class C with Four Stainless Steel Lockdowns and Anchor Tabs	4	1201P to 1230P	251.00

OUTLET ADAPTERS			ADD/EACH
-E1	Closed End Cap		160.00
-E4	4" No-Hub End Outlet		192.00
-E6	6" No-Hub End Outlet		192.00
-E8	8" No-Hub End Outlet		192.00
-E10	10" No-Hub End Outlet		380.00
-U4	4" No-Hub Bottom Outlet		192.00
-U6	6" No-Hub Bottom Outlet		192.00
-U8	8" No-Hub Bottom Outlet		192.00
-U12	12" No-Hub Bottom Outlet		POA

GRATE OPTIONS			ADD/FOOT
† -DCC	Ductile Iron Solid Cover - Class C		44.00
† -DCF	Ductile Iron Solid Cover - Class F		255.00
† -DGC	Ductile Iron Slotted Grate - Class C		*
† -DGF	Ductile Iron Slotted Grate - Class F		140.00
-GDC	Galvanized Ductile Iron Grate - Class C		128.00
-GDF	Galvanized Ductile Iron Grate - Class F		254.00
-GG	Fiberglass Grate - Class A		POA
-GHPD	Galvanized Heelproof Longitudinal Ductile Iron Grate - Class C		163.00
† -HPD	Heel-Proof Longitudinal Ductile Iron Grate - Class C		36.00
-SBG	Stainless Steel Bar Grate - Class C		POA

MISCELLANEOUS OPTIONS			ADD/EACH
-IB	Inline Catch Basin - 40" Long with DGC Grate		1,132.00
	For Optional Grates Add/Foot Price Above		*
-VP	Vandal Resistant		7.00

MADE IN THE U.S.A. (HIGHLIGHTED IN GRAY)

GRATE OPTIONS			ADD/FOOT
† -ADA-USA	Meets Americans with Disabilities Act Requirements - Class C		149.00
† -DGC-USA	Ductile Iron Slotted Grate - Class C		132.00
† -DGF-USA	Ductile Iron Slotted Grate - Class F		206.00
† -GADA-USA	Galvanized Ductile ADA Slotted Grate - Class C		202.00
-GDC-USA	Galvanized Ductile Slotted Grate - Class C		185.00
-GDF-USA	Galvanized Ductile Slotted Grate - Class F		319.00

MISCELLANEOUS OPTIONS			ADD/FOOT
-CBF	Black Acid Resistant Coated Frame		52.00
-HDG	Galvanized Frame Assembly		52.00
-SF	Type 304 Stainless Steel Top Frame		304.00

			ADD/EACH
-DB	Bottom Dome Strainer		223.00

SERVICE CHARGES

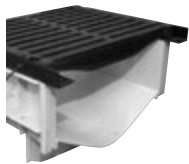
			ADD/EACH
Fabrication	45°; 90°; Tee; Side Outlet Fabs		1,014.00
	Cross Fabs		2,032.00
Cutting			131.00
Class F Reinforcement			955.00

*Regularly furnished unless otherwise specified.

†Indicates grate will be shipped unpainted. For an additional charge, Zurn will paint the grates. Please contact your customer service representative for pricing.

For additional product information, please visit www.zurn.com.

Z874-18 TRENCH DRAIN SYSTEM



Standard Length: 80" (6.67')
Standard Grate Included: DGC

ENGINEERING SPECIFICATION

Channels shall be 80" long, 23" wide, and have an 18" wide throat. Modular channel sections shall be made of High Density Polyethylene (HDPE), have interlocking ends, and radiused bottom. Channel shall be provided with no slope (neutral) or with a 1.00% built-in slope. Channels shall be available with inverts ranging from 10.25" to 35.1". Channels shall have clips attached to the frame to accommodate vertical rebar for positioning and anchoring purposes. Choices of class A thru F grates shall be available with H-20 and/or FAA load ratings and/or ADA compliance with mechanical lockdown devices. A heavy-duty steel frame shall be available to complement the channels and grates. End outlets, bottom outlets, and side outlets shall be available in 4", 6", 8", and 12" diameters. Trench drain shall be Flo-Thru model Z874-18.

Trench Number	Shallow Invert		Deep Invert		Flow Rate		
	In.	mm	In.	mm	cfs	gpm	lps
1801P	10.25	260	11.082	281	3058	193	6.85
1802P	11.082	281	11.914	303	3589	226	8.04
1803P	11.914	303	12.746	324	4132	261	9.26
1804P	12.746	324	13.578	345	4685	296	10.5
1805P	13.578	345	14.41	366	5247	331	11.76
1806P	14.41	366	15.242	387	5816	367	13.04
1807P	15.242	387	16.074	408	6392	403	14.33
1808P	16.074	408	16.906	429	6973	440	15.63
1809P	16.906	429	17.738	451	7559	477	16.94
1810P	17.738	451	18.57	472	8149	514	18.27
1811P	18.57	472	19.402	493	8743	552	19.6
1812P	19.402	493	20.234	514	9340	589	20.93
1813P	20.234	514	21.066	535	9940	627	22.28
1814P	21.066	535	22.898	556	10542	665	23.63
1815P	21.898	556	22.73	577	11147	703	24.98
1816P	22.73	577	23.562	598	11753	741	26.34
1817P	23.562	598	24.394	620	12362	780	27.71
1818P	24.394	620	25.226	641	12972	818	29.08
1819P	25.226	641	26.058	662	13584	857	30.45
1820P	26.058	662	26.89	683	14198	896	31.82
1821P	26.89	683	27.722	704	14812	934	33.2
1822P	27.722	704	28.554	725	15428	973	34.58
1823P	28.554	725	29.386	746	16045	1012	35.96
1824P	29.386	746	30.218	768	16663	1051	37.35
1825P	30.218	768	31.05	789	17282	1090	38.74
1826P	31.05	789	31.882	810	17901	1129	40.12
1827P	31.882	810	32.714	831	18522	1168	41.52
1828P	32.714	831	33.546	852	19143	1208	42.91
1829P	33.546	852	34.378	873	19765	1247	44.3
1830P	34.378	873	35.21	894	20388	1286	45.7

PREFIX	DESCRIPTION	NO. OF GRATES ANCHOR STRAPS	TRENCH NUMBERS	PER FOOT
Z*	80" High Density Polyethylene (HDPE) Channel, Heavy-Duty Frame with Anchor Studs, Ductile Iron Grate - Class C with Four Stainless Steel Lockdowns and Anchor Tabs	4	1801P to 1830P	353.00

OUTLET ADAPTERS			ADD/EACH
-E1	Closed End Cap		184.00
-E4	4" No-Hub End Outlet		254.00
-E6	6" No-Hub End Outlet		254.00
-E8	8" No-Hub End Outlet		254.00
-E12	12" No-Hub End Outlet		POA
-U4	4" No-Hub Bottom Outlet		254.00
-U6	6" No-Hub Bottom Outlet		254.00
-U8	8" No-Hub Bottom Outlet		254.00
-U12	12" No-Hub Bottom Outlet		POA
-U18	18" No-Hub Bottom Outlet		POA

GRATE OPTIONS			ADD/FOOT
‡ -DCC	Ductile Iron Solid Cover - Class C		44.00
‡ -DCF	Ductile Iron Solid Cover - Class F		111.00
‡ -DGC	Ductile Iron Slotted Grate - Class C		*
‡ -DGF	Ductile Iron Slotted Grate - Class F		85.00
-GDC	Galvanized Ductile Iron Grate - Class C		148.00
-GDF	Galvanized Ductile Iron Grate - Class F		230.00
-GG	Fiberglass Grate - Class A		POA
‡ -HPD	Heel-Proof Longitudinal Ductile Iron Grate - Class C		36.00

MISCELLANEOUS OPTIONS			ADD/EACH
-IB	Inline Catch Basin - 40" Long with DGC Grate		1,520.00
	For Optional Grates Add/Foot Price Above		*
-VP	Vandal-Proof Lockdown Assembly		7.00

MADE IN THE U.S.A. (HIGHLIGHTED IN GRAY)

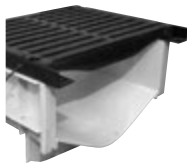
GRATE OPTIONS			ADD/FOOT
‡ -DGE-USA	Ductile Iron Slotted Grate - Class E		171.00
-GDE-USA	Galvanized Ductile Slotted Grate - Class E		373.00

MISCELLANEOUS OPTIONS			ADD/FOOT
-CBF	Black Acid Resistant Coated Frame		52.00
-HDG	Galvanized Frame Assembly		52.00
-SF	Type 304 Stainless Steel Top Frame		304.00

			ADD/EACH
-DB	Bottom Dome Strainer		223.00

SERVICE CHARGES			ADD/EACH
Fabrication	-45°; 90°; Tee; Side Outlet Fabs		1,014.00
	-Cross Fabs		2,032.00
Cutting			266.00
Class F Reinforcement	- For 90° and Tee Fabs		1,026.00

Z874-21 TRENCH DRAIN SYSTEM



Standard Length: 80" (6.67')
Standard Grate Included: DGC

ENGINEERING SPECIFICATION

Channels shall be 80" long, 26-1/4" wide, and have a 21-1/4" wide throat. Modular channel sections shall be made of High Density Polyethylene (HDPE), have interlocking ends, and radiused bottom. Channel shall be provided with no slope (neutral) or with a 1.00% built-in slope. Channels shall be available with inverts ranging from 11.25" to 36.21". Channels shall have clips attached to the frame to accommodate vertical rebar for positioning and anchoring purposes. Choices of class A thru F grates shall be available with H-20 and/or FAA load ratings and/or ADA compliance with mechanical lockdown devices. A heavy-duty steel frame shall be provided to distribute weight between the grates and the HDPE channel. End caps and catch basins shall be available to complement the channels and grates. End outlets, bottom outlets, and side outlets shall be available in 4", 6", 8", 12", and 18" diameters. Trench drain shall be Flo-Thru model Z874-21.

Trench Number	Shallow Invert		Deep Invert		Flow Rate		
	In.	mm	In.	mm	cfs	gpm	lps
2101P	11.25	286	12.082	307	8.369	3734	236
2102P	12.082	305	12.914	328	9.857	4398	277
2103P	12.914	328	13.746	349	11.388	5081	320
2104P	13.746	349	14.578	370	12.953	5779	365
2105P	14.578	370	15.41	391	14.549	6491	409
2105NP	15.41	391	15.41	391	-	-	-
2106P	15.41	391	16.424	417	16.17	7214	455
2107P	16.424	417	17.074	434	17.814	7948	501
2108P	17.074	434	17.906	455	19.478	8690	548
2109P	17.906	455	18.738	476	21.159	9440	596
2110P	18.738	476	19.57	497	22.855	10197	643
2111P	19.57	497	20.402	518	24.565	10960	691
2112P	20.402	518	21.234	539	26.287	11728	740
2113P	21.234	539	22.066	560	28.02	12501	789
2114P	22.066	560	22.898	582	29.763	13279	838
2115P	22.898	582	23.73	603	31.514	14060	887
2115NP	23.73	603	23.73	603	-	-	-
2116P	23.73	603	24.562	624	33.274	14845	936
2117P	24.562	624	25.394	645	35.041	15633	986
2118P	25.394	645	26.226	666	36.814	16424	1036
2119P	26.226	666	27.058	687	38.594	17218	1086
2120P	27.058	687	27.89	701	40.379	18015	1136
2121P	27.89	701	28.722	729	42.169	18814	1187
2122P	28.722	729	29.554	751	43.964	19614	1237
2123P	29.554	751	30.386	772	45.763	20417	1288
2124P	30.386	772	31.218	793	47.567	21222	1339
2125P	31.218	793	32.05	814	49.374	22028	1390
2125NP	32.05	814	32.05	814	-	-	-
2126P	32.05	814	32.882	835	51.184	22836	1441
2127P	32.882	835	33.714	856	52.998	23645	1492
2128P	33.714	856	34.546	878	54.815	24455	1543
2129P	34.546	878	35.378	899	56.634	25267	1594
2130P	35.378	899	36.21	920	58.457	26080	1645

PREFIX	DESCRIPTION	NO. OF GRATES ANCHOR STRAPS	TRENCH NUMBERS	PER FOOT
Z*	80" High Density Polyethylene (HDPE) Channel, Heavy-Duty Frame with Anchor Studs, Ductile Iron Grate - Class C with Four Stainless Steel Lockdowns and Anchor Tabs	4	2101P to 2130P	435.00

OUTLET ADAPTERS			ADD/EACH
-E1	Closed End Cap		192.00
-E4	4" No-Hub End Outlet		254.00
-E6	6" No-Hub End Outlet		254.00
-E8	8" No-Hub End Outlet		254.00
-E12	12" No-Hub End Outlet		POA
-E18	18" No-Hub End Outlet		POA
-U4	4" No-Hub Bottom Outlet		254.00
-U6	6" No-Hub Bottom Outlet		254.00
-U8	8" No-Hub Bottom Outlet		254.00
-U12	12" No-Hub Bottom Outlet		POA
-U18	18" No-Hub Bottom Outlet		POA

GRATE OPTIONS			ADD/FOOT
‡ -DCC	Ductile Iron Solid Cover - Class C		44.00
‡ -DGC	Ductile Iron Slotted Grate - Class C		*
‡ -DGF	Ductile Iron Slotted Grate - Class F		140.00
-GDC	Galvanized Ductile Iron Grate - Class C		229.00
-GDF	Galvanized Ductile Iron Grate - Class F		276.00
-GG	Fiberglass Grate - Class A		553.00
‡ -HPD	Heel-Proof Longitudinal Ductile Iron Grate - Class C		36.00

MISCELLANEOUS OPTIONS			ADD/EACH
-IB	Inline Catch Basin - 40" Long with DGC Grate		1,810.00
	For Optional Grates Add/Foot Price Above		*
-VP	Vandal-Proof Lockdown Assembly		7.00

MADE IN THE U.S.A. (HIGHLIGHTED IN GRAY)

GRATE OPTIONS			ADD/FOOT
‡ -DGE-USA	Ductile Iron Slotted Grate - Class E		207.00
-GDE-USA	Galvanized Ductile Iron Grate - Class E		412.00

MISCELLANEOUS OPTIONS			ADD/FOOT
-CBF	Black Acid Resistant Coated Frame		52.00
-GFA	Galvanized Frame Assembly		52.00
-SF	Type 304 Stainless Steel Top Frame		304.00

			ADD/EACH
-DB	Bottom Dome Strainer		223.00

SERVICE CHARGES			ADD/EACH
Fabrication	-45°; 90°; Tee; Side Outlet Fabs		1,014.00
	-Cross Fabs		2,032.00
Cutting			266.00
Class F Reinforcement	- For 90° and Tee Fabs		1,044.00

*Regularly furnished unless otherwise specified.

‡Indicates grate will be shipped unpainted. For an additional charge, Zurn will paint the grates. Please contact your customer service representative for pricing.

For additional product information, please visit www.zurn.com.

PERMA-TRENCH

FLO-THRU

ALUMINUM TRENCH

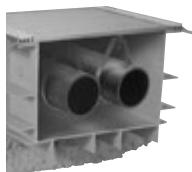
SLOT DRAIN/HI-CAP

SANI-FLO

FRAME AND GRATE SYSTEMS

OIL SEPARATORS

Z874-U-XX-LDRA LIGHT-DUTY UTILITY TRENCH WITH ALUMINUM FRAME, CLAMP, AND SOLID COVER



The Z874-U is a neutral, non-sloped utility drain system. Depths of this system may range from 4" to 30".

ENGINEERING SPECIFICATION

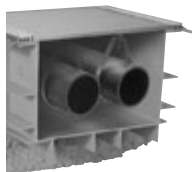
Z874-U-XX-LDRA Utility Trench Drainage System. High Density Polyethylene (HDPE) drain channel. All sections modular 40" lengths with interlocking ends. Complete with aluminum frame assembly at surface and light-duty aluminum (LDRA) solid cover. Recessed 1/8" for linoleum application.

PREFIX	DESCRIPTION	NO. OF GRATES PER CHANNEL	PER FOOT
Z*	40" High Density Polyethylene (HDPE) Channel with Aluminum Frame, Clamp, and Solid Cover	2	

MADE IN THE U.S.A. (HIGHLIGHTED IN GRAY)

End Caps		187.00
874-U-12-LDRA	12" Throat Opening - Class A	555.00
874-U-14-LDRA	14" Throat Opening - Class A	593.00
874-U-16-LDRA	16" Throat Opening - Class A	632.00
875-U-18-LDRA	18" Throat Opening - Class A	670.00
875-U-20-LDRA	20" Throat Opening - Class A	710.00
875-U-22-LDRA	22" Throat Opening - Class A	748.00
875-U-24-LDRA	24" Throat Opening - Class A	784.00
875-U-26-LDRA	26" Throat Opening - Class A	843.00
875-U-28-LDRA	28" Throat Opening - Class A	882.00
SERVICE CHARGES		ADD/EACH
Fabrication	- 45°; 90°; Tee Fabs	508.00
	- Cross Fabs	1,014.00
Cutting		261.00

Z874-U-XX-LDRS LIGHT-DUTY UTILITY TRENCH WITH ALUMINUM FRAME AND CLAMP WITH SOLID STEEL COVER



The Z874-U is a neutral, non-sloped utility drain system. Depths of this system may range from 4" to 30".

ENGINEERING SPECIFICATION

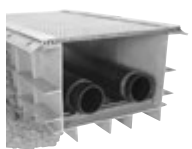
Z874-U-XX-LDRS Utility Trench Drainage System. High Density Polyethylene (HDPE) drain channel. All sections modular 40" lengths with interlocking ends. Complete with aluminum frame assembly at surface and light-duty solid steel (LDRS) cover. Recessed 1/8" for linoleum application.

PREFIX	DESCRIPTION	NO. OF GRATES PER CHANNEL	PER FOOT
Z*	40" High Density Polyethylene (HDPE) Channel with Aluminum Frame and Clamp with Solid Steel Cover	2	

MADE IN THE U.S.A. (HIGHLIGHTED IN GRAY)

End Caps		187.00
874-U-12-LDRS	12" Throat Opening - Class A	380.00
874-U-14-LDRS	14" Throat Opening - Class A	395.00
874-U-16-LDRS	16" Throat Opening - Class A	411.00
875-U-18-LDRS	18" Throat Opening - Class A	489.00
875-U-20-LDRS	20" Throat Opening - Class A	442.00
875-U-22-LDRS	22" Throat Opening - Class A	455.00
875-U-24-LDRS	24" Throat Opening - Class A	470.00
875-U-26-LDRS	26" Throat Opening - Class A	484.00
875-U-28-LDRS	28" Throat Opening - Class A	501.00
SERVICE CHARGES		ADD/EACH
Fabrication	- 45°; 90°; Tee Fabs	508.00
	- Cross Fabs	1,014.00
Cutting		261.00

Z874-U-XX-HD HEAVY-DUTY UTILITY TRENCH WITH STEEL FRAME AND DUCTILE IRON SOLID COVER



The Z874-U is a neutral, non-sloped utility drain system. Depths of this system may range from 4" to 30".

ENGINEERING SPECIFICATION

Z874-U-XX-HD Heavy-Duty Utility Trench Drainage System with Ductile Solid Cover. High Density Polyethylene (HDPE) drain channel. All sections modular 80" or 8' lengths with interlocking ends. Complete with Dura-Coated steel frame system and ductile iron solid cover.

PREFIX	DESCRIPTION	NO. OF GRATES PER CHANNEL	PER FOOT
Z*	80" High Density Polyethylene (HDPE) Channel with Dura-Coated Steel Frame and Ductile Iron Solid Cover	2	

MADE IN THE U.S.A. (HIGHLIGHTED IN GRAY)

End Caps		187.00
874-U-9-HD	9" Throat Opening - Class E	270.00
874-U-12-HD	12" Throat Opening - Class C	322.00
874-U-18-HD	18" Throat Opening - Class C	433.00
874-U-21-HD	21" Throat Opening - Class C	508.00
SERVICE CHARGES		ADD/EACH
Fabrication	- 45°; 90°; Tee Fabs	508.00
	- Cross Fabs	1,014.00
Cutting		261.00

Z880 2-1/2" WIDE TRENCH DRAIN SYSTEM



Standard Length: 48" (4')
Standard Grate Included: POG
Colors Available: Gray (Standard), Sand, White, Brick Red, Blue
Please Note: Additional custom colors for channels and gratings are available upon request. Please call your customer service representative for lead time and minimum runs.

ENGINEERING SPECIFICATION

2-1/2" Wide Trench Drain System shall be 48" long and 2-1/2" wide. Drain shall be 3" deep. Drain shall be made of High Density Polyethylene (HDPE) and be UV-10 stabilized. Drain shall have bedding feet and/or bedding feet shall be used for positioning and anchoring purposes. Drain shall have tongue and groove snap fit connection. End outlets and bottom outlets shall be available in 1-1/2" diameter. Drain shall be Flo-Thru Z880. 24" long high-density polyethylene decorative grate (-POG) provided as standard.

PREFIX	DESCRIPTION	NO. OF GRATES PER CHANNEL	PER FOOT
Z*	48" Linear High Density Polyethylene (LHDPE) Modular Drain Channel with High Density Polyethylene Decorative Grate	4	33.00

MADE IN THE U.S.A. (HIGHLIGHTED IN GRAY)			
OUTLET ADAPTERS			ADD/EACH
-E1	Closed End Cap		7.00
-E1.5	1-1/2" No-Hub End Outlet		7.00
-U1.5	1-1/2" No-Hub Bottom Outlet		7.00
GRATE OPTIONS			ADD/FOOT
-AWG	Aluminum Wire Grate - Class A		POA
-BZ	Bronze Decorative Grate - Class A		223.00
-POG	Heel-Proof Polyethylene Grate - Class A		*
-SOG	Stainless Steel Decorative Grate - Class A		223.00
-SWG	Stainless Steel Wire Grate - Class A		POA
MISCELLANEOUS OPTIONS			ADD/EACH
-C45	45-Degree Channel		21.00
-C90	90-Degree Channel		21.00
-G45	45-Degree Plastic Grate - Class A		15.00
-G90	90-Degree Plastic Grate - Class A		15.00
-SS45	45-Degree Channel and Grate - Class A		36.00
-SS90	90-Degree Channel and Grate - Class A		36.00
-VP	Vandal-Resistant Grate Lockdown Assembly Bag (1 Per Channel)		9.00
SERVICE CHARGES			ADD/EACH
Cutting			31.00

Z884 4-3/4" WIDE SHALLOW DRAIN SYSTEM



Standard Length: 40" (3.33')
Standard Grate Included: HPP

ENGINEERING SPECIFICATION

Channels shall be 40" long, 4-3/4" wide, and have a 3-1/4" wide throat. Modular channel sections shall be made of polypropylene, have interlocking ends, and radiused bottom. Channel shall be provided flat (neutral) with a 2.875" invert. Channels shall have clips molded into the sides of the channel to accommodate vertical rebar for positioning and anchoring purposes. Choices of class A and B grates shall be available with ADA compliance with mechanical lockdown devices. End caps and catch basins shall be available to complement the channels and grates. End outlets in 2" diameter and bottom outlets in 3" diameter shall be available. Trench drain shall be Flo-Thru model Z884.

PREFIX	DESCRIPTION	NO. OF GRATES PER CHANNEL	PER FOOT
Z*	40" Polypropylene Channel with Heel-Proof (HDPE) Grate with Grate Lockdowns	2	40.00

MADE IN THE U.S.A. (HIGHLIGHTED IN GRAY)			
OUTLET ADAPTERS			ADD/EACH
-E1	Closed End Cap		19.00
-E2	2" No-Hub End Outlet		19.00
-U3	3" No-Hub Bottom Outlet		19.00
GRATE OPTIONS			ADD/FOOT
-BZ	Bronze Decorative Grate - Class A		286.00
-CG	Cast Iron Slotted Grate - Class B		10.00
-FG	Fabricated Galvanized Steel Slotted Grate - Class A		6.00
-FS	Fabricated Stainless Steel Slotted Grate - Class A		45.00
-HPP	Heel-Proof Polyethylene Grate - Class A		*
-PG	Perforated Galvanized Steel ADA Grate - Class A		6.00
-PS	Perforated Stainless Steel ADA Grate - Class A		45.00
MISCELLANEOUS OPTIONS			ADD/FOOT
-SVF	Stainless Steel Veneer Frame		39.00
SERVICE CHARGES			ADD/EACH
Fabrication	45°; 90°; Tee; Side Outlet Fabs		254.00
	Cross Fabs		506.00
Cutting			65.00

*Regularly furnished unless otherwise specified.

†Indicates grate will be shipped unpainted. For an additional charge, Zurn will paint the grates. Please contact your customer service representative for pricing.

For additional product information, please visit www.zurn.com.

Z883 6" WIDE SHALLOW TRENCH DRAIN SYSTEM



Standard Length: 40" (3.33')
Standard Grate Included: DGC

ENGINEERING SPECIFICATION

Channels shall be 40" long, 6" wide, and have a 4" wide throat. Modular channel sections shall be made of polypropylene, have interlocking ends, and radiused bottom. Channel shall be provided flat (neutral) with a 3-1/2" invert. Channels shall have clips molded into the sides of the channel to accommodate vertical rebar for positioning and anchoring purposes. Choices of class A, B, and C grates shall be available with H-20 and/or ADA compliance with mechanical lockdown devices. End caps and catch basins shall be available to complement the channels and grates. End outlets in 2" diameter and bottom outlets in 2", 3", and 4" diameters shall be available. Trench drain shall be Flo-Thru model Z883.

PREFIX	DESCRIPTION	NO. OF GRATES PER CHANNEL	PER FOOT
Z*	40" Polypropylene Channel with Ductile Iron Grate - Class C with Grate Lockdowns	2	83.00
OUTLET ADAPTERS			ADD/EACH
-E1	Closed End Cap		25.00
-E2	2" No-Hub End Outlet		25.00
-U2	2" No-Hub Bottom Outlet		25.00
-U3	3" No-Hub Bottom Outlet		25.00
-U4	4" No-Hub Bottom Outlet		25.00
STANDARD GRATE OPTIONS			ADD/FOOT
-BDC	Black Acid Resistant Epoxy Coated Ductile Grate - Class C		37.00
-BG	Galvanized Ductile Iron Bar Grate - Class C		23.00
-DBG	Ductile Iron Cast Bar Grate - Class C		14.00
-DC	Ductile Iron Solid Cover - Class C		17.00
-DGC	Ductile Iron Slotted Grate - Class C		*
-GG	Fiberglass Grate - Class A		55.00
-GHPD	Galvanized Heel-Proof Ductile Grate - Class B		57.00
-HPD	Heel-Proof Longitudinal Ductile Grate - Class B		14.00
-HPP	Heel-Proof Polyethylene Grate - Class A		6.00
-LD	Ductile Iron Longitudinal Slotted Grate - Class B		14.00
-RFG	Reinforced Galvanized Steel Slotted Grate - Class B		10.00
-RFGC	Reinforced Galvanized Steel Slotted Grate - Class C		12.00
-RFSC	Reinforced Stainless Steel Slotted Grate - Class C		90.00
-RPG	Reinforced Galvanized Perforated Grate - Class B		10.00
-RPGC	Reinforced Galvanized Perforated Grate - Class C		12.00
-RPGR	Reinforced Galvanized Perforated Reverse Punch Anti-Slip Grate - Class B		10.00
-RPGRC	Reinforced Galvanized Perforated Reverse Punch Anti-Slip Grate - Class C		12.00
-RPSC	Reinforced Stainless Steel Perforated ADA Grate - Class C		90.00
-RPSRC	Reinforced Stainless Steel Perforated Reverse Punch Anti-Slip Grate - Class C		90.00

DECORATIVE GRATE OPTIONS		ADD/FOOT
-BCD	Bronze Circular Decorative Grate - Class A	286.00
-BDD	Bronze Diagonal Decorative Grate - Class A	286.00
-BZ	Bronze Decorative Grate - Class A	286.00
-DCD	Ductile Circular Decorative Grate - Class C	17.00
-DDD	Ductile Diagonal Decorative Grate - Class A	17.00
-DOG	Ductile Decorative Grate - Class B	17.00
-DTW	Ductile Iron Tidal Wave Grate - Class C	21.00
-DWV	Ductile Wave Decorative Grate - Class A	17.00
-GMG	Galvanized Steel Mesh Grate - Class B	134.00
-HPB	Heel-Proof Slotted Grate - Class A	286.00
-HPS	Heel-Proof Stainless Steel Slotted Grate - Class A	254.00
-SBG	Stainless Steel Bar Grate - Class E	286.00
-SCD	Stainless Steel Circular Decorative Grate - Class B	254.00
-SDD	Stainless Steel Diagonal Decorative Grate - Class B	254.00
-SMG	Stainless Steel Mesh Grate - Class B	116.00
-SOG	Stainless Steel Decorative Grate - Class B	254.00

MISCELLANEOUS OPTIONS		ADD/FOOT
-DB	Bottom Dome Strainer	54.00
-VP	Vandal-Proof Center Lockdown	7.00
-SVF	Stainless Steel Veneer Frame	39.00

MADE IN THE U.S.A. (HIGHLIGHTED IN GRAY)

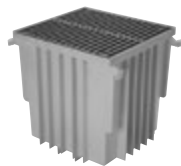
STANDARD GRATE OPTIONS		ADD/FOOT
-AWG	Aluminum Wire Grate - Class A	POA
-DGC-USA	Ductile Iron Slotted Grate - Class C	15.00
-FS	Fabricated Stainless Steel Slotted Grate - Class A	25.00
-PPC	Plastic Perforated ADA Grate - Class C	65.00
-PS	Stainless Steel Perforated ADA Grate - Class A	25.00
-PSR	Stainless Steel Perforated Reverse Punch Anti-Slip ADA Grate - Class A	25.00
-SWG	Stainless Steel Wire Grate - Class A	POA

		DEDUCT/FOOT
-FG	Fabricated Galvanized Steel Slotted Grate - Class A	9.00
-PG	Galvanized Steel Perforated ADA Grate - Class A	9.00
-PGR	Galvanized Perforated Reverse Punch Anti-Slip ADA Grate - Class A	9.00

DECORATIVE GRATE OPTIONS		ADD/FOOT
-BZ	Bronze Decorative Grate - Class A	286.00
-NBZ-USA	Nickel Bronze Decorative Grate - Class A	396.00

SERVICE CHARGES		ADD/EACH
Fabrication	- 45°; 90°; Tee; Side Outlet Fabs	254.00
	- Cross Fabs	506.00
Cutting		65.00

Z887 CATCH BASIN



Standard Grate Included: DGC

ENGINEERING SPECIFICATION

Catch Basins shall be 6" wide x 20" long x 20" deep, 12" wide x 24" long x 24" deep, or 24" wide x 24" long x 24" deep and shall be made of High Density Polyethylene (HDPE). Choices of class A thru F grates shall be available with H-20, FAA, and/or ADA compliance. Outlets in 2", 3", 4", 6", and 8" diameters shall be available. Catch Basin shall be Flo-Thru model Z887.

PREFIX	DESCRIPTION	TOP SIZE	APPROX WT. LBS. (LESS GRATES)	PER FOOT	
-Z*	High Density Polyethylene (HDPE) Catch Basin with Ductile Iron Grate - Class C	6 x 20	17.0	443.00	
		12 x 24	14.6	733.00	
		24 x 24	19.9	984.00	
ADAPTERS				ADD	
-E3/U3	3" No-Hub End/Bottom Outlet Adapter			25.00	
-E4/U4	4" No-Hub End/Bottom Outlet Adapter			25.00	
-E6/U6	6" No-Hub End/Bottom Outlet Adapter			25.00	
-IA	Inlet Adapter (if more than one required) for Z886 Trench System			72.00	
-IA	Inlet Adapter (if more than one required) for Z882 Trench System			131.00	
GRATE OPTIONS			6X20	12X24	24X24
-BCD	Bronze Circular Decorative Grate - Class A	286.00	N/A	N/A	
-BDD	Bronze Diagonal Decorative Grate - Class A	286.00	N/A	N/A	
-BG	Galvanized Ductile Iron Bar Grate - Class C	72.00	N/A	N/A	
	Class D	N/A	143.00	N/A	
-DC	Ductile Iron Solid Cover - Class C	72.00	N/A	N/A	
	Class E	N/A	143.00	N/A	
-DCD	Ductile Circular Decorative Grate - Class C	72.00	N/A	N/A	
-DDD	Ductile Diagonal Decorative Grate - Class A	72.00	N/A	N/A	
-DGC	Ductile Iron Slotted Grate - Class C	*	*	*	
-DGE	Ductile Iron Slotted Grate - Class E	72.00	143.00	N/A	
-DGF	Ductile Iron Slotted Grate - Class F	N/A	286.00	570.00	
-DOG	Ductile Decorative Grate - Class B	72.00	N/A	N/A	
-DTW	Ductile Iron Tidal Wave Grate - Class C	74.00	N/A	N/A	
-DWV	Ductile Wave Decorative Grate - Class A	72.00	N/A	N/A	
-FGF	Ductile Iron Frame and Slotted Grate - Class F	106.00	N/A	N/A	
-GDC	Galvanized Ductile Grate - Class C	36.00	176.00	318.00	
-GDE	Galvanized Ductile Grate - Class E	96.00	207.00	N/A	
-GDF	Galvanized Ductile Grate - Class F	N/A	318.00	632.00	
-GFG	Galvanized Ductile Frame and Slotted Grate - Class F	140.00	N/A	N/A	
-GG	Fiberglass Grate - Class A	106.00	140.00	368.00	
-GHPDE	Galvanized Heel-Proof Ductile ADA Grate - Class E	131.00	254.00	N/A	
-HPB	Bronze Heel-Proof Slotted Grate - Class A	286.00	N/A	N/A	
-HPD	Heel-Proof Ductile ADA Grate - Class B	72.00	211.00	N/A	
-HPDE	Heel-Proof Ductile ADA Grate - Class E	106.00	225.00	N/A	
-HPP	Heel-Proof Polyethylene Grate - Class A	36.00	N/A	N/A	

GRATE OPTIONS		6X20	12X24	24X24
-HPS	Stainless Steel Heel-Proof Slotted Grate - Class A	286.00	N/A	N/A
-LD	Ductile Iron Longitudinal Slotted Grate - Class B	72.00	N/A	N/A
-RFGC	Reinforced Galvanized Steel Slotted Grate - Class C	83.00	177.00	N/A
-RFSC	Reinforced Galvanized Stainless Steel Slotted Grate - Class C	329.00	-	-
-RPGC	Reinforced Galvanized Perforated ADA Grate - Class C	83.00	177.00	N/A
-RPGRC	Reinforced Galvanized Perforated Reverse Punch Anti-Slip ADA Grate - Class C	83.00	177.00	N/A
-RPSC	Reinforced Stainless Steel Perforated ADA Grate - Class C	329.00	437.00	N/A
-RPSRC	Reinforced Stainless Steel Perforated Reverse Punch Anti-Slip ADA Grate - Class C	329.00	437.00	N/A
-SBG	Stainless Steel Bar Grate - Class C	286.00	N/A	N/A
-SBG-L	Stainless Steel Bar Grate - Class C	N/A	380.00	N/A
-SCD	Stainless Steel Circular Decorative Grate - Class B	286.00	N/A	N/A
-SDD	Stainless Steel Diagonal Decorative Grate - Class B	286.00	N/A	N/A
-SOG	Stainless Steel Decorative Grate - Class B	286.00	N/A	N/A

MADE IN THE U.S.A. (HIGHLIGHTED IN GRAY)				
GRATE OPTIONS		6X20	12X24	24X24
-ADA-USA	Meets Americans with Disabilities Act Requirements - Class C	N/A	211.00	N/A
-AWG	Aluminum Wire Grate - Class A	POA	N/A	N/A
-BZ	Bronze Decorative Grate - Class A	286.00	N/A	N/A
-BDE-USA	Black Acid Resistant Epoxy Coated Ductile Grate - Class E	128.00	216.00	N/A
-DCE-USA	Ductile Solid Cover - Class E	89.00	N/A	N/A
-DGC-USA	Ductile Iron Slotted Grate - Class C	77.00	134.00	N/A
-DGE-USA	Ductile Iron Slotted Grate - Class E	86.00	149.00	N/A
-FG	Galvanized Steel Slotted Grate - Class A	37.00	72.00	143.00
-FGF-USA	Ductile Iron Frame and Slotted Grate - Class F	127.00	N/A	N/A
-FS	Fabricated Stainless Steel Slotted Grate - Class A	78.00	153.00	304.00
-GADA-USA	Galvanized Ductile ADA Slotted Grate - Class C	N/A	192.00	N/A
-GDC-USA	Galvanized Ductile Grate - Class C	90.00	185.00	N/A
-GDE-USA	Galvanized Ductile Grate - Class E	106.00	211.00	N/A
-GFG-USA	Galvanized Ductile Frame and Slotted Grate - Class F	185.00	N/A	N/A
-HDD	Highway Domestic Ductile Grate - H20/H25 - Class C	82.00	N/A	N/A
-HR	Ductile Iron Non-Removable Heel-Proof Grate/Frame System - H20/H25 - Class C	89.00	N/A	N/A
-NBZ-USA	Nickel Bronze Decorative Grate - Class A	POA	N/A	N/A
-PG	Galvanized Steel Perforated ADA Grate - Class A	37.00	72.00	143.00
-PPC	Plastic Perforated ADA Grate - Class C	122.00	N/A	N/A
-PS	Perforated Stainless Steel ADA Grate - Class A	78.00	153.00	304.00
-SWG	Stainless Steel Wire Grate - Class A	POA	N/A	N/A

MISCELLANEOUS OPTIONS				
-CBF	Black Acid Resistant Coated Frame	128.00	160.00	292.00
-EXT	12" Body Extension	N/A	N/A	537.00
-FT	Foul Air Trap	POA	POA	POA
-GFA	Galvanized Extra-Heavy-Duty Frame Assembly with Anchor Studs	128.00	160.00	292.00
-HD	Extra-Heavy-Duty Frame Assembly with Anchor Studs	65.00	128.00	192.00
-SF	Type 304 Stainless Steel Top Frame	443.00	884.00	1,326.00
-Y	Sediment Bucket	148.00	192.00	254.00
-YS	Stainless Steel Sediment Bucket	286.00	412.00	695.00

*Regularly furnished unless otherwise specified.

†Indicates grate will be shipped unpainted. For an additional charge, Zurn will paint the grates. Please contact your customer service representative for pricing.

For additional product information, please visit www.zurn.com.

PERMA-TRENCH

FLO-THRU

ALUMINUM TRENCH

SLOT DRAIN/HI-CAP

SANI-FLO

FRAME AND GRATE SYSTEMS

OIL SEPARATORS

Z806 6" WIDE TRENCH DRAIN SYSTEM



Standard Length: 10'
Standard Grate Included: DGC

ENGINEERING SPECIFICATION

Channels shall be 10' long, 6" wide, and have a 4" wide throat. Modular channel sections shall be made of Fiber Reinforced Polyester (FRP) fiberglass, have interlocking ends, and radiused bottom. Channel shall be provided with no slope or with a .75% built-in slope. Channels shall be available with inverts ranging from 3.5" to 12.50". Choices of class A thru F grates shall be available with H-20 and/or FAA load ratings and/or ADA compliance with mechanical lockdown devices. A heavy-duty steel frame shall be provided to distribute weight between the grates and the FRP fiberglass channel. End caps and catch basins shall be available to complement the channels and grates. End outlets, bottom outlets, and side outlets shall be available in 2", 3", 4", and 6" diameters. Trench drain shall be Flo-Thru model Z806.

NOTE

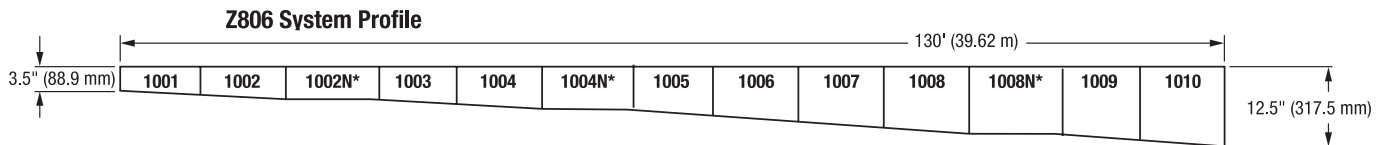
White acid resistant coating also available for frame and grate

Trench Number	Shallow Invert		Deep Invert		Flow Rate		
	In.	mm	In.	mm	cfs	gpm	lps
1001	3.5	89	4.4	112	0.196	88	6
1002	4.4	112	5.3	135	0.296	133	8
1002N	5.30	135	5.30	135	-	-	-
1003	5.3	135	6.20	157	0.397	178	11
1004	6.20	157	7.10	180	0.501	225	14
1004N	7.10	180	7.10	180	-	-	-
1005	7.10	180	8.00	203	0.604	271	17
1006	8.00	203	8.90	226	0.711	319	20
1007	8.90	226	9.80	249	0.816	366	23
1008	9.80	249	10.70	272	0.922	414	26
1008N	10.70	272	10.70	272	-	-	-
1009	10.7	272	11.6	295	1.029	462	29
1010	11.6	295	12.5	318	1.136	510	32

PREFIX	DESCRIPTION	NO. OF GRATES ANCHOR STRAPS	TRENCH NUMBERS	PER FOOT
-Z*	10' Fiber Reinforced Polyester (FRP) Fiberglass Channel with Heavy-Duty Frame with Anchor Studs, Ductile Iron Grate - Class C with Lockdown and Anchor Tabs	6	1001 thru 1010	129.00
-ZV	10' Vynilester Fiberglass Channel with Heavy-Duty Frame with Anchor Studs, Ductile Iron Grate - Class C with Lockdown and Anchor Tabs	6	1001 thru 1010	156.00

OUTLET ADAPTERS		ADD/EACH	
		Z*	ZV
-E1	Closed End Cap	28.00	47.00
-E2	2" No-Hub End Outlet	28.00	47.00
-E3	3" No-Hub End Outlet	28.00	47.00
-E4	4" No-Hub End Outlet	28.00	47.00
-E6	6" No-Hub End Outlet	POA	POA
-U2	2" No-Hub Bottom Outlet	28.00	47.00
-U3	3" No-Hub Bottom Outlet	28.00	47.00
-U4	4" No-Hub Bottom Outlet	28.00	47.00
-U6	6" No-Hub Bottom Outlet	POA	POA

STANDARD GRATE OPTIONS		ADD/FT
-BDC	Black Acid Resistant Epoxy Coated Ductile Grate-Class C	37.00
-BDE	Black Acid Resistant Epoxy Coated Ductile Grate - Class E	52.00
-BG	Galvanized Ductile Iron Cast Bar Grate - Class C	23.00
-DBG	Ductile Iron Cast Bar Grate - Class C	14.00
-DC	Ductile Iron Solid Cover - Class C	17.00
-DGC	Ductile Iron Slotted Grate - Class C	*
-DGE	Ductile Iron Slotted Grate - Class E	10.00
-DGE-NA	Ductile Iron Grate - Class E - North American	15.00
-GDC	Galvanized Ductile Iron Grate - Class C	14.00
-GDE	Galvanized Ductile Grate - Class E	19.00
-GG	Fiberglass Grate - Class A	55.00
-GHPDE	Galvanized Heel-Proof Ductile ADA Grate - Class E	62.00
-HPD	Heel-Proof Longitudinal Ductile ADA Grate - Class B	14.00
-HPDE	Heel-Proof Longitudinal Ductile ADA Grate - Class E	35.00
-HPP	Heel-Proof Polyethylene ADA Grate - Class A	6.00
-LD	Longitudinal Ductile Grate - Class B	9.00
-RFGC	Reinforced Galvanized Steel Slotted Grate - Class C	12.00
-RFSC	Reinforced Galvanized Stainless Steel Slotted Grate - Class C	90.00
-RPGC	Reinforced Galvanized Perforated ADA Grate - Class C	12.00
-RPGRC	Reinforced Galvanized Perforated Reverse Punch Anti-Slip ADA Grate - Class C	12.00
-RPSRC	Reinforced Stainless Steel Perforated Reverse Punch Anti-Slip ADA Grate - Class C	90.00



Z806 6" WIDE TRENCH DRAIN SYSTEM

DECORATIVE GRATE OPTIONS		ADD/FT
-BCD	Bronze Circular Decorative Grate - Class A	286.00
-BDD	Bronze Diagonal Decorative Grate - Class A	286.00
-DCD	Ductile Circular Decorative Grate - Class C	17.00
-DDD	Ductile Diagonal Decorative Grate - Class A	17.00
-DOG	Ductile Decorative Grate - Class B	17.00
-DTW	Ductile Iron Tidal Wave Grate - Class C	21.00
-DWV	Ductile Wave Decorative Grate - Class A	17.00
-HPB	Heel-Proof Slotted Grate - Class A	286.00
-HPS	Heel-Proof Stainless Steel Slotted Grate - Class A	286.00
-SBG	Stainless Steel Bar Grate - Class E	286.00
-SCD	Stainless Steel Circular Decorative Grate - Class B	286.00
-SDD	Stainless Steel Diagonal Decorative Grate - Class B	286.00
-SMG	Stainless Steel Mesh Grate - Class B	116.00
-SOG	Stainless Steel Decorative Grate - Class B	286.00
MISCELLANEOUS OPTIONS		ADD/FT
-SW	8.1" High Sidewall Extension Adapter (Per Pair)	67.00
-VP	Vandal-Proof Center Lockdown	13.00
		ADD/EACH
-DB	Bottom Dome Strainer	54.00
-JC	Joint Connector	54.00



MADE IN THE U.S.A. (HIGHLIGHTED IN GRAY)

STANDARD GRATE OPTIONS		ADD/FT
-AWG	Aluminum Wire Grate - Class A	POA
-BDE-USA	Black Acid Resistant Epoxy Coated Ductile Grate - Class E	65.00
‡ -DCE-USA	Ductile Iron Solid Cover - Class E	52.00
-DGC-USA	Ductile Iron Slotted Grate - Class C	15.00
-DGE-USA	Ductile Iron Slotted Grate - Class E	22.00
-FS	Fabricated Stainless Steel Slotted Grate - Class A	25.00
-GDC-USA	Galvanized Ductile Grate - Class C	29.00
-GDE-USA	Galvanized Ductile Grate - Class E	33.00
‡ -GHPDE-USA	Galvanized Heel-Proof Ductile ADA Grate - Class E	82.00
-GMG	Galvanized Steel Mesh Grate - Class B	134.00
‡ -HPDE-USA	Heel-Proof Longitudinal Ductile ADA Grate - Class E	54.00
-PPC	Plastic Perforated ADA Grate - Class C	65.00
-PS	Stainless Steel Perforated Grate - Class A	25.00
-PSR	Stainless Steel Perforated Reverse Punch Anti-Slip - Class A	25.00
		DEDUCT/FT
-FG	Fabricated Galvanized Steel Slotted Grate - Class A	9.00
-PG	Galvanized Perforated Steel Grate ADA - Class A	9.00
-PGR	Galvanized Perforated Reverse Punch Anti-Slip ADA Grate - Class A	9.00
DECORATIVE GRATE OPTIONS		ADD/FT
-BZ	Bronze Decorative Grate - Class A	286.00
-NBZ-USA	Nickel Bronze Decorative Grate - Class A	POA
-PDE-USA	Ductile Iron Perforated ADA Grate - Class E	152.00
-SWG	Stainless Steel Wire Grate - Class A	POA
MISCELLANEOUS OPTIONS		ADD/FT
-CBF	Black Acid Resistant Coated Top Frame	27.00
-HDF	Extra-Heavy-Duty Frame Assembly with Anchor Studs and Grate Lockdown Hardware	*
-HDG	Galvanized Extra-Heavy-Duty Frame Assembly with Anchor Studs and Grate Lockdown Hardware	65.00
-SF	Type 304 Stainless Steel Top Frame Assembly	89.00
SERVICE CHARGES		ADD/EACH
-Fabrication	- 45°; 90°; Tee; Side Outlet Fabs	255.00
	- Cross Fabs	508.00
-Cutting		66.00

*Regularly furnished unless otherwise specified.

‡Indicates grate will be shipped unpainted. For an additional charge, Zurn will paint the grates. Please contact your customer service representative for pricing.

For additional product information, please visit www.zurn.com.

PERMA-TRENCH

FLO-THRU

ALUMINUM TRENCH

SLOT DRAIN/HI-CAP

SANI-FLO

FRAME AND GRATE SYSTEMS

OIL SEPARATORS

Z812 12" WIDE TRENCH DRAIN SYSTEM



Standard Length: 10'
Standard Grate Included: DGC

ENGINEERING SPECIFICATION

Channels shall be 10' long, 12" wide, and have a 9-1/4" wide throat. Modular channel sections shall be made of Fiber Reinforced Polyester (FRP) fiberglass, have interlocking ends, and radiused bottom. Channel shall be provided either flat (neutral) or with a 1.04% built-in slope. Channels shall be available with inverts ranging from 6.25" to 18.25". Choices of class A thru F grates shall be available with H-20 and/or FAA load ratings and/or ADA compliance with mechanical lockdown devices. A heavy-duty steel frame shall be provided to distribute weight between the grates and the FRP fiberglass channel. End caps and catch basins shall be available to complement the channels and grates. End outlets, bottom outlets, and side outlets shall be available in 4", 6", and 8" diameters. Trench drain shall be Flo-Thru model Z812.

NOTE

White acid resistant coating also available for frame and grate

Trench Number	Shallow Invert		Deep Invert		Flow Rate		
	In.	mm	In.	mm	cfs	gpm	lps
2001	6.25	159	7.50	191	1.299	583	37
2002	7.50	191	8.75	222	1.91	857	54
2002N	8.75	222	8.75	222	-	-	-
2003	8.75	222	10.00	254	2.549	1144	72
2004	10	254	11.25	286	3.204	1438	91
2004N	11.25	286	11.25	286	-	-	-
2005	11.25	286	12.5	318	3.875	1739	110
2006	12.5	318	13.75	349	4.552	2043	129
2007	13.75	349	15	381	5.236	2350	149
2008	15	381	16.25	413	5.925	2659	168
2008N	16.25	413	16.25	413	-	-	-
2009	16.25	413	17.5	445	6.618	2970	188
2010	17.5	445	18.75	476	7.315	3283	208

PREFIX	DESCRIPTION	NO. OF GRATES ANCHOR STRAPS	TRENCH NUMBERS	PER FOOT
Z*	10' Fiber Reinforced Polyester (FRP) Fiberglass Channel with Heavy-Duty Frame with Anchor Studs, Ductile Iron Grate - Class C with Lockdown and Anchor Tabs	5	2001 thru 2010	258.00
ZV	10' Vinylester Fiberglass Channel with Heavy-Duty Frame with Anchor Studs, Ductile Iron Grate - Class C with Lockdown and Anchor Tabs	5	2001 thru 2010	322.00

OUTLET ADAPTERS		ADD/EACH	
		Z	ZV
-E1	Closed End Cap	57.00	151.00
-E4	4" No-Hub End Outlet	57.00	151.00
-E6	6" No-Hub End Outlet	57.00	151.00
-E8	8" No-Hub End Outlet	57.00	151.00
-U4	4" No-Hub Bottom Outlet	57.00	151.00
-U6	6" No-Hub Bottom Outlet	57.00	151.00
-U8	8" No-Hub Bottom Outlet	57.00	151.00

GRATE OPTIONS		ADD/FOOT
-BDC	Black Acid Resistant Ductile Grate - Class C	53.00
-BDF	Black Acid Resistant Ductile Grate - Class F	106.00
-BG	Galvanized Ductile Iron Bar Grate - Class D	23.00
-DC	Ductile Iron Solid Cover - Class E	52.00
-DGC	Ductile Iron Slotted Grate - Class C	*
-DGE	Ductile Iron Slotted Grate - Class E	30.00
-DGF	Ductile Iron Slotted Grate - Class F	72.00
-GDC	Galvanized Ductile Slotted Grate - Class C	53.00
-GDE	Galvanized Ductile Slotted Grate - Class E	65.00
-GDF	Galvanized Ductile Slotted Grate - Class F	106.00
-GG	Fiberglass Grate - Class A	72.00
-GHPDE	Galvanized Heel-Proof Ductile ADA Grate - Class E	141.00
-HPD	Heel-Proof Ductile Slotted Grate - Class B	37.00
-HPDE	Heel-Proof Ductile ADA Grate - Class E	65.00
-RFGC	Reinforced Galvanized Slotted Grate - Class C	162.00
-RFSC	Reinforced Stainless Steel Slotted Grate - Class C	401.00
-RPGC	Reinforced Galvanized Perforated ADA Grate - Class C	162.00
-RPGRC	Reinforced Galvanized Perforated Reverse Punch Anti-Slip ADA Grate - Class C	162.00
-RPSC	Reinforced Stainless Steel Perforated ADA Grate - Class C	401.00
-RPSRC	Reinforced Stainless Steel Perforated Reverse Punch Anti-Slip ADA Grate - Class C	401.00
-SBG-L	Stainless Steel Bar Grate - Class C	388.00

MISCELLANEOUS OPTIONS		ADD/FOOT
-VP	Vandal-Proof Center Lockdown	13.00

		ADD/EACH
-JC	Joint Connector	128.00

MADE IN THE U.S.A. (HIGHLIGHTED IN GRAY)

STANDARD GRATE OPTIONS		ADD/FOOT
‡ -ADA-USA	Meets Americans with Disabilities Act Requirements - Class C	89.00
‡ -DGC-USA	Ductile Iron Slotted Grate - Class C	84.00
‡ -DGE-USA	Ductile Iron Slotted Grate - Class E	98.00
-FG	Fabricated Galvanized Steel Slotted Grate - Class A	17.00
-FS	Fabricated Stainless Steel Slotted Grate - Class A	141.00
-GADA-USA	Galvanized Ductile ADA Slotted Grate - Class C	103.00
-GDC-USA	Galvanized Ductile Slotted Grate - Class C	98.00
-GDE-USA	Galvanized Ductile Slotted Grate - Class E	122.00
-GHPDE-USA	Galvanized Heel-Proof Ductile ADA Grate - Class E	154.00
-HPDE-USA	Heel-Proof Ductile ADA Grate - Class E	111.00
-PG	Perforated Galvanized Steel ADA Grate - Class A	17.00
-PS	Perforated Stainless Steel ADA Grate - Class A	141.00
-RFG	Reinforced Galvanized Slotted Grate - Class B	140.00
-RPG	Reinforced Galvanized Perforated ADA Grate - Class B	140.00
-SSCD	Reinforced Stainless Steel Solid Cover - Class B	411.00

MISCELLANEOUS OPTIONS		ADD/FOOT
-CBF	Black Acid Resistant Coated Top Frame	35.00
-CWF	White Acid Resistant Coated Top Frame	35.00
-GF	Fiberglass Frame	178.00
-GFA	Galvanized Welded Frame Assembly	37.00
-SF	Type 304 Stainless Steel Top Frame	198.00
-SW	10-3/4" High Sidewall Extension Adapter (Per Pair)	140.00

		ADD/EACH
-DB	Bottom Dome Strainer	98.00

SERVICE CHARGES		ADD/EACH
Fabrication	- 45°; 90°; Tee; Side Outlet Fabs	508.00
	- Cross Fabs	1,014.00
Cutting		131.00

For additional product information, please visit www.zurn.com.

*Regularly furnished unless otherwise specified.

†Indicates grate will be shipped unpainted. For an additional charge, Zurn will paint the grates. Please contact your customer service representative for pricing.

Z817 CATCH BASIN



Standard Grate Included: DGC

ENGINEERING SPECIFICATION

Catch Basins shall be 6" wide x 20" long x 20" deep, 12" wide x 24" long x 24" deep, or 24" wide x 24" long x 24" deep and shall be made of Fiber Reinforced Polyester (FRP) fiberglass. Choices of class A thru F grates shall be available with H-20, FAA, and/or ADA compliance. Outlets in 2", 3", 4", 6", and 8" diameters shall be available. Catch Basin shall be Flo-Thru model Z817.

NOTE

White acid resistant coating also available for frame and grate. Please contact customer care for mechanical lockdown availability and pricing.

PREFIX	DESCRIPTION	TOP SIZE	APPROX WT. LBS. (LESS GRATES)	PER FOOT	
Z*	Fiber Reinforced Polyester (FRP) Fiberglass Body with Heavy-Duty Steel Frame and Ductile Iron Grate - Class C	6 x 20	11	518.00	
		12 x 24	36	733.00	
		24 x 24	50	998.00	
ZV	Vinylester Fiberglass Body with Heavy-Duty Steel Frame and Ductile Iron Grate - Class C	6 x 20	11	777.00	
		12 x 24	36	984.00	
		24 x 24	50	1262.00	
OUTLET ADAPTERS			ADD/EACH		
			Z*	ZV	
-E4/U4	4" No-Hub End Outlet Adapter		72.00	97.00	
-E6/U6	6" No-Hub End Outlet Adapter		72.00	97.00	
-E8/U8	8" No-Hub End Outlet Adapter		72.00	97.00	
-IA	Inlet Adapter (if more than one required) for Z806 Trench System		72.00	116.00	
-IA	Inlet Adapter (if more than one required) for Z812 Trench System		131.00	204.00	
GRATE OPTIONS - ADD PER BASIN (FULL GRATE)			6X20	12X24	24X24
-BCD	Bronze Circular Decorative Grate - Class A		286.00	N/A	N/A
-BDD	Bronze Diagonal Decorative Grate - Class A		286.00	N/A	N/A
-BG	Galvanized Ductile Iron Bar Grate - Class C		72.00	N/A	N/A
	- Class E		N/A	143.00	N/A
-DC	Ductile Iron Solid Cover - Class C		72.00	N/A	N/A
	- Class E		N/A	143.00	-
-DCD	Ductile Circular Decorative Grate - Class C		72.00	N/A	N/A
-DDD	Ductile Diagonal Decorative Grate - Class A		72.00	N/A	N/A
-DGC	Ductile Iron Slotted Grate - Class C		*	*	*
-DGE	Ductile Iron Slotted Grate - Class E		72.00	143.00	N/A
-DGF	Ductile Iron Slotted Grate - Class F		N/A	286.00	570.00
-DOG	Ductile Decorative Grate - Class B		72.00	N/A	N/A
-DTW	Ductile Iron Tidal Wave Grate - Class C		74.00	N/A	N/A
-DWV	Ductile Wave Decorative Grate - Class A		72.00	N/A	N/A
-GDC	Galvanized Cast Iron Grate - Class C		36.00	175.00	318.00
-GDE	Galvanized Ductile Grate - Class E		96.00	207.00	N/A
-GDF	Galvanized Ductile Grate - Class F		N/A	318.00	632.00
-GG	Fiberglass Grate - Class A		106.00	211.00	368.00
-GHPDE	Galvanized Heel-Proof Ductile ADA Grate - Class E		131.00	254.00	N/A
-HPB	Bronze Heel-Proof Slotted Grate - Class A		286.00	N/A	N/A
-HPD	Heel-Proof Ductile ADA Grate - Class B		72.00	211.00	N/A
-HPDE	Heel-Proof Ductile ADA Grate - Class E		106.00	225.00	N/A
-HPP	Heel-Proof Polyethylene ADA Grate - Class A		36.00	N/A	N/A
-HPS	Stainless Steel Heel-Proof Slotted Grate - Class A		254.00	N/A	N/A
-LD	Ductile Iron Longitudinal Slotted Grate - Class B		72.00	N/A	N/A
-RFG	Reinforced Galvanized Steel Slotted Grate - Class B		72.00	N/A	N/A

GRATE OPTIONS - ADD PER BASIN (FULL GRATE)		6X20	12X24	24X24
-RFGC	Reinforced Galvanized Steel Slotted Grate - Class C	83.00	177.00	N/A
-RFSC	Reinforced Stainless Steel Slotted Grate - Class C	329.00	437.00	N/A
-RPG	Reinforced Galvanized Perforated ADA Grate - Class B	72.00	N/A	N/A
-RPGC	Reinforced Galvanized Perforated ADA Grate - Class C	83.00	177.00	N/A
-RPGR	Reinforced Galvanized Perforated Reverse Punch Anti-Slip ADA Grate - Class B	72.00	N/A	N/A
-RPGR	Reinforced Galvanized Perforated Reverse Punch Anti-Slip ADA Grate - Class C	83.00	177.00	N/A
-RPSC	Reinforced Stainless Steel Perforated ADA Grate - Class C	329.00	437.00	N/A
-RPSRC	Reinforced Stainless Steel Perforated Reverse Punch Anti-Slip ADA Grate - Class C	329.00	437.00	N/A
-SBG	Stainless Steel Bar Grate - Class E	286.00	N/A	N/A
-SBG-L	Stainless Steel Bar Grate - Class C	N/A	380.00	N/A
-SCD	Stainless Steel Circular Decorative Grate - Class B	286.00	N/A	N/A
-SDD	Stainless Steel Diagonal Decorative Grate - Class B	286.00	N/A	N/A
-SOG	Stainless Steel Decorative Grate - Class B	286.00	N/A	N/A
MISCELLANEOUS OPTIONS				
-CBF	Black Acid Resistant Coated Frame	71.00	140.00	279.00
-FT	Foul Air Trap	POA	POA	POA
-GFA	Galvanized Extra-Heavy-Duty Frame Assembly with Studs	71.00	140.00	279.00
-SF	Type 304 Stainless Steel Top Frame	443.00	884.00	1,326.00
-Y	Sediment Bucket	148.00	192.00	254.00
-YS	Stainless Steel Sediment Bucket	286.00	412.00	695.00

MADE IN THE U.S.A. (HIGHLIGHTED IN GRAY)				
GRATE OPTIONS - ADD PER BASIN (FULL GRATE)		6X20	12X24	24X24
-ADA-USA	Meets Americans with Disabilities Act Requirements - Class C	N/A	140.00	N/A
-AWG	Aluminum Wire Grate - Class A	POA	N/A	N/A
-BZ	Bronze Decorative Grate - Class A	286.00	N/A	N/A
-BDE-USA	Black Acid Resistant Epoxy Coated Ductile Grate - Class E	128.00	216.00	N/A
-DCE-USA	Ductile Solid Cover - Class E	89.00	N/A	N/A
-DGC-USA	Ductile Iron Slotted Grate - Class C	78.00	134.00	N/A
-DGE-USA	Ductile Iron Slotted Grate - Class E	86.00	149.00	N/A
-FG	Galvanized Steel Slotted Grate - Class A	37.00	72.00	143.00
-FS	Fabricated Stainless Steel Slotted Grate - Class A	78.00	153.00	304.00
-GADA-USA	Galvanized Ductile ADA Slotted - Class C	N/A	192.00	N/A
-GDC-USA	Galvanized Ductile Grate - Class C	90.00	178.00	N/A
-GDE-USA	Galvanized Ductile Grate - Class E	106.00	211.00	N/A
-NBZ-USA	Nickel Bronze Decorative Grate - Class A	POA	N/A	N/A
-PG	Galvanized Steel Perforated ADA Grate - Class A	37.00	72.00	143.00
-PPC	Plastic Perforated ADA Grate - Class C	122.00	N/A	N/A
-PS	Perforated Stainless Steel ADA Grate - Class A	78.00	153.00	304.00
-RFG-USA	Reinforced Galvanized Steel Slotted Grate - Class B	N/A	153.00	304.00
-RFS-USA	Reinforced Stainless Steel Slotted Grate - Class B	N/A	N/A	758.00
-RPG-USA	Reinforced Galvanized Perforated ADA Grate - Class B	N/A	153.00	304.00
-RPGR-USA	Reinforced Galvanized Perforated Reverse Punch Anti Slip ADA Grate - Class B	N/A	153.00	304.00
-RPS-USA	Reinforced Stainless Steel Perforated ADA Grate - Class B	N/A	N/A	758.00
-RPSR-USA	Reinforced Stainless Steel Perforated Reverse Punch Anti-Slip ADA Grate - Class B	N/A	N/A	758.00
-SWG	Stainless Steel Wire Grate - Class A	POA	N/A	N/A

*Regularly furnished unless otherwise specified.

†Indicates grate will be shipped unpainted. For an additional charge, Zurn will paint the grates. Please contact your customer service representative for pricing.

For additional product information, please visit www.zurn.com.

PERMA-TRENCH

FLO-THRU

ALUMINUM TRENCH

SLOT DRAIN/HI-CAP

SANI-FLO

FRAME AND GRATE SYSTEMS

OIL SEPARATORS

ZF806 6" WIDE TRENCH DRAIN SYSTEM



Standard Length: 10'
Standard Grate Included: DGC

ENGINEERING SPECIFICATION

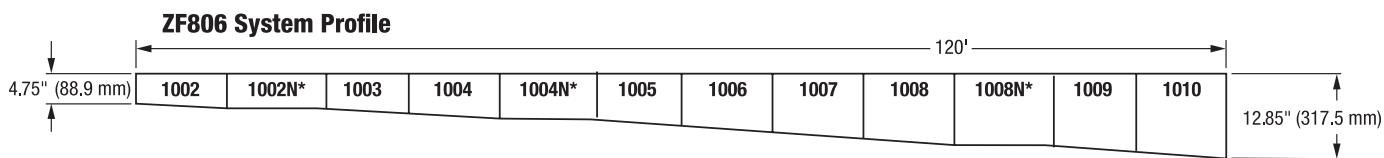
Channels shall be 10' long, 6" wide, and have a 4" wide throat. Modular channel sections shall be made of Fiber Reinforced Polyester (FRP) fiberglass, have interlocking ends, and radiused bottom. Channel shall be provided with no slope or with a .75% built-in slope. Channels shall be available with inverts ranging from 4.75" to 12.85". Choices of class A thru F grates shall be available with H-20 and/or FAA load ratings and/or ADA compliance with mechanical lockdown devices. A heavy-duty steel frame shall be provided to distribute weight between the grates and the FRP fiberglass channel. End caps and catch basins shall be available to complement the channels and grates. End outlets, bottom outlets, and side outlets shall be available in 2", 3", 4", and 6" diameters. Trench drain shall be Flo-Thru model ZF806.

NOTE

White acid resistant coating also available for frame and grate

Trench Number	Shallow Invert		Deep Invert		Flow Rate		
	In.	mm	In.	mm	cfs	gpm	lps
1002	4.75	121	5.65	144	0.326	146	9
1002N	5.65	144	5.65	144	-	-	-
1003	5.65	144	6.55	166	0.427	192	12
1004	6.55	166	7.45	189	0.53	238	15
1004N	7.45	189	7.45	189	-	-	-
1005	7.45	189	8.35	212	0.635	285	18
1006	8.35	212	9.25	235	0.74	332	21
1007	9.25	235	10.15	258	0.845	379	24
1008	10.15	258	11.05	281	0.951	427	27
1008N	11.05	281	11.05	281	-	-	-
1009	11.05	281	11.95	304	1.058	475	30
1010	11.95	304	12.85	326	1.164	523	33

PREFIX	DESCRIPTION	NO. OF GRATES ANCHOR STRAPS	TRENCH NUMBERS	PER FOOT
-ZF*	10' Fiber Reinforced Polyester (FRP) Fiberglass Channel with Heavy-Duty Frame with Anchor Studs, Ductile Iron Grate - Class C with Lockdown and Anchor Tabs	6	1001 thru 1010	131.00
-ZFV	10' Vinylester Fiberglass Channel with Heavy-Duty Frame with Anchor Studs, Ductile Iron Grate - Class C with Lockdown and Anchor Tabs	6	1001 thru 1010	161.00
OUTLET ADAPTERS				ADD/EACH
				ZF* ZFV
-E1	Closed End Cap			28.00 47.00
-E2	2" No-Hub End Outlet			28.00 47.00
-E3	3" No-Hub End Outlet			28.00 47.00
-E4	4" No-Hub End Outlet			28.00 47.00
-E6	6" No-Hub End Outlet			POA POA
-U2	2" No-Hub Bottom Outlet			28.00 47.00
-U3	3" No-Hub Bottom Outlet			28.00 47.00
-U4	4" No-Hub Bottom Outlet			28.00 47.00
-U6	6" No-Hub Bottom Outlet			POA POA
STANDARD GRATE OPTIONS				ADD/FOOT
-BDC	Black Acid Resistant Epoxy Coated Ductile Grate - Class C			37.00
-BDE	Black Acid Resistant Epoxy Coated Ductile Grate - Class E			52.00
-BG	Galvanized Ductile Iron Cast Bar Grate - Class C			23.00
-DBG	Ductile Iron Cast Bar Grate - Class C			14.00
-DC	Ductile Iron Solid Cover - Class C			17.00
-DGC	Ductile Iron Slotted Grate - Class C			*
-DGE	Ductile Iron Slotted Grate - Class E			10.00
-DGE-NA	Ductile Iron Slotted Grate - Class E - North American			15.00
-GDC	Galvanized Ductile Iron Grate - Class C			14.00
-GDE	Galvanized Ductile Grate - Class E			19.00
-GG	Fiberglass Grate - Class A			55.00
-GHPDE	Galvanized Heel-Proof Ductile ADA Grate - Class E			62.00
-HPD	Heel-Proof Longitudinal Ductile ADA Grate - Class B			14.00
-HPP	Heel-Proof Polyethylene ADA Grate - Class A			6.00
-HPDE	Heel-Proof Longitudinal Ductile ADA Grate - Class E			35.00
-LD	Longitudinal Ductile Grate - Class B			9.00
-RFGC	Reinforced Galvanized Steel Slotted Grate - Class C			12.00
-RFSC	Reinforced Stainless Steel Slotted Grate - Class C			90.00
-RPGC	Reinforced Galvanized Perforated Grate - Class C			12.00
-RPGRC	Reinforced Galvanized Perforated Reverse Punch Anti-Slip Grate - Class C			12.00
-RPSRC	Reinforced Stainless Steel Perforated Reverse Punch Anti-Slip Grate - Class C			90.00



ZF806 6" WIDE TRENCH DRAIN SYSTEM

DECORATIVE GRATE OPTIONS		ADD/FOOT
-BCD	Bronze Circular Decorative Grate - Class A	286.00
-BDD	Bronze Diagonal Decorative Grate - Class A	286.00
-DCD	Ductile Circular Decorative Grate - Class C	17.00
-DDD	Ductile Diagonal Decorative Grate - Class A	17.00
-DOG	Ductile Decorative Grate - Class B	17.00
-DTW	Ductile Iron Tidal Wave Grate - Class C	21.00
-DWV	Ductile Wave Decorative Grate - Class A	17.00
-HPB	Heel-Proof Slotted Grate - Class A	286.00
-HPS	Heel-Proof Stainless Steel Slotted Grate - Class A	286.00
-SBG	Stainless Steel Bar Grate - Class E	286.00
-SCD	Stainless Steel Circular Decorative Grate - Class B	286.00
-SDD	Stainless Steel Diagonal Decorative Grate - Class B	286.00
-SMG	Stainless Steel Mesh Grate - Class B	116.00
-SOG	Stainless Steel Decorative Grate - Class B	286.00
MISCELLANEOUS OPTIONS		ADD/FOOT
-VP	Vandal-Proof Center Lockdown	13.00
		ADD/EACH
-DB	Bottom Dome Strainer	54.00
-JC	Joint Connector	54.00



MADE IN THE U.S.A. (HIGHLIGHTED IN GRAY)

STANDARD GRATE OPTIONS		ADD/FOOT
-AWG	Aluminum Wire Grate - Class A	POA
-BDE-USA	Black Acid Resistant Epoxy Coated Ductile Grate - Class E	65.00
-DCE-USA	Ductile Iron Solid Cover - Class E	52.00
-DGC-USA	Ductile Iron Slotted Grate - Class C	15.00
-DGE-USA	Ductile Iron Slotted Grate - Class E	22.00
-FS	Fabricated Stainless Steel Slotted Grate - Class A	25.00
-GDC-USA	Galvanized Ductile Grate - Class C	29.00
-GDE-USA	Galvanized Ductile Grate - Class E	33.00
-GHPDE-USA	Galvanized Heel-Proof Ductile ADA Grate - Class E	82.00
-GMG	Galvanized Steel Mesh Grate - Class B	134.00
-HPDE-USA	Heel Proof Longitudinal Ductile ADA Grate - Class E	54.00
-PPC	Plastic Perforated ADA Grate - Class C	65.00
-PS	Stainless Perforated Steel Grate - Class A	25.00
-PSR	Stainless Steel Perforated Reverse Punch Anti-Slip Grate - Class A	25.00
		DEDUCT/FOOT
-FG	Fabricated Galvanized Steel Slotted Grate - Class A	9.00
-PG	Galvanized Perforated Steel ADA Grate - Class A	9.00
-PGR	Galvanized Perforated Reverse Punch Anti-Slip ADA Grate - Class E	9.00
DECORATIVE GRATE OPTIONS		ADD/FOOT
-BZ	Bronze Decorative Grate - Class A	286.00
-NBZ-USA	Nickel Bronze Decorative Grate - Class A	POA
-PDE-USA	Ductile Iron Perforated ADA Grate - Class E	152.00
-SWG	Stainless Steel Wire Grate - Class A	POA
MISCELLANEOUS OPTIONS		ADD/FOOT
-CBF	Black Acid Resistant Coated Top Frame	27.00
-HD	Extra-Heavy-Duty Frame Assembly with Anchor Studs and Grate Lockdown Hardware	*
-HDG	Galvanized Extra-Heavy-Duty Frame Assembly with Anchor Studs and Grate Lockdown Hardware	65.00
-SF	Type 304 Stainless Steel Top Frame Assembly	89.00
SERVICE CHARGES		ADD/EACH
Fabrication	- 45°; 90°; Tee; Side Outlet Fabs	255.00
	- Cross Fabs	508.00
Cutting		66.00

*Regularly furnished unless otherwise specified.

†Indicates grate will be shipped unpainted. For an additional charge, Zurn will paint the grates. Please contact your customer service representative for pricing.

For additional product information, please visit www.zurn.com.

PERMA-TRENCH

FLO-THRU

ALUMINUM TRENCH

SLOT DRAIN/HI-CAP

SANI-FLO

FRAME AND GRATE SYSTEMS

OIL SEPARATORS

ZF812 12" WIDE TRENCH DRAIN SYSTEM



Standard Length: 10'
Standard Grate Included: DGC

ENGINEERING SPECIFICATION

Channels shall be 10' long, 12" wide, and have a 9-1/4" wide throat. Modular channel sections shall be made of Fiber Reinforced Polyester (FRP) fiberglass, have interlocking ends, and radiused bottom. Channel shall be provided either flat (neutral) or with a 1.04% built-in slope. Channels shall be available with inverts ranging from 7.93" to 19.18". Choices of class A thru F grates shall be available with H-20 and/or FAA load ratings and/or ADA compliance with mechanical lockdown devices. A heavy-duty steel frame shall be provided to distribute weight between the grates and the FRP fiberglass channel. End caps and catch basins shall be available to complement the channels and grates. End outlets, bottom outlets, and side outlets shall be available in 4", 6", and 8" diameters. Trench drain shall be Flo-Thru model ZF812.

NOTE

White acid resistant coating also available for frame and grate

Trench Number	Shallow Invert		Deep Invert		Flow Rate		
	In.	mm	In.	mm	cfs	gpm	lps
2002	7.93	201	9.18	233	2.088	937	59
2002N	9.18	233	9.18	233	-	-	-
2003	9.18	233	10.43	265	2.730	1225	77
2004	10.43	265	11.68	297	3.388	1521	96
2004N	11.68	297	11.68	297	-	-	-
2005	11.68	297	12.93	328	4.058	1821	115
2006	12.93	328	14.18	360	4.736	2125	134
2007	14.18	360	15.43	392	5.42	2432	153
2008	15.43	392	16.68	424	6.109	2742	173
2008N	16.68	424	16.68	424	-	-	-
2009	16.68	424	17.93	455	6.802	3053	193
2010	17.93	455	19.18	487	7.498	3365	212

PREFIX	DESCRIPTION	NO. OF GRATES ANCHOR STRAPS	TRENCH NUMBERS	PER FOOT
ZF*	10' Fiber Reinforced Polyester (FRP) Fiberglass Channel with Heavy-Duty Frame with Anchor Studs, Ductile Iron Grate - Class C with Lockdown and Anchor Tabs	5	2001 thru 2010	266.00
ZFV	10' Vinylester Fiberglass Channel with Heavy-Duty Frame with Anchor Studs, Ductile Iron Grate - Class C with Lockdown and Anchor Tabs	5	2001 thru 2010	334.00
OUTLET ADAPTERS				ADD/EACH
				ZF* ZFV
-E1	Closed End Cap			57.00 151.00
-E4	4" No-Hub End Outlet			57.00 151.00
-E6	6" No-Hub End Outlet			57.00 151.00
-E8	8" No-Hub End Outlet			57.00 151.00
-U4	4" No-Hub Bottom Outlet			57.00 151.00
-U6	6" No-Hub Bottom Outlet			57.00 151.00
-U8	8" No-Hub Bottom Outlet			57.00 151.00

GRATE OPTIONS		ADD/FOOT
-BDC	Black Acid Resistant Ductile Grate - Class C	53.00
-BDF	Black Acid Resistant Ductile Grate - Class F	106.00
-BG	Galvanized Ductile Iron Bar Grate - Class D	23.00
-DC	Ductile Iron Solid Cover - Class E	52.00
-DGC	Ductile Iron Slotted Grate - Class C	*
-DGE	Ductile Iron Slotted Grate - Class E	30.00
-DGF	Ductile Iron Slotted Grate - Class F	72.00
-GDC	Galvanized Ductile Slotted Grate - Class C	53.00
-GDE	Galvanized Ductile Slotted Grate - Class E	65.00
-GDF	Galvanized Ductile Slotted Grate - Class F	106.00
-GG	Fiberglass Grate - Class A	72.00
-GHPDE	Galvanized Heel-Proof Ductile ADA Grate - Class E	141.00
-HPD	Heel-Proof Ductile Slotted Grate - Class B	37.00
-HPDE	Heel-Proof Ductile ADA Grate - Class E	65.00
-RFGC	Reinforced Galvanized Steel Slotted Grate - Class C	162.00
-RFSC	Reinforced Stainless Steel Slotted Grate - Class C	401.00
-RPGC	Reinforced Galvanized Perforated Grate - Class C	162.00
-RPGRC	Reinforced Galvanized Perforated Reverse Punch Anti-Slip Grate - Class C	162.00
-RPSC	Reinforced Stainless Steel Perforated ADA Grate - Class C	401.00
-RPSRC	Reinforced Stainless Steel Perforated Reverse Punch Anti-Slip Grate - Class C	401.00
-SBG-L	Stainless Steel Bar Grate - Class C	388.00

MISCELLANEOUS OPTIONS		ADD/FOOT
-VP	Vandal-Proof Center Lockdown	13.00
		ADD/EACH
-JC	Joint Connector	128.00

MADE IN THE U.S.A. (HIGHLIGHTED IN GRAY)

GRATE OPTIONS		ADD/FOOT
‡ -ADA-USA	Meets Americans with Disabilities Act Requirements - Class C	89.00
‡ -DGC-USA	Ductile Iron Slotted Grate - Class C	84.00
‡ -DGE-USA	Ductile Iron Slotted Grate - Class E	98.00
-FG	Fabricated Galvanized Steel Slotted Grate - Class A	17.00
-FS	Fabricated Stainless Steel Slotted Grate - Class A	141.00
-GADA-USA	Galvanized Ductile ADA Slotted Grate - Class C	103.00
-GDC-USA	Galvanized Ductile Slotted Grate - Class C	98.00
-GDE-USA	Galvanized Ductile Slotted Grate - Class E	122.00
-GHPDE-USA	Galvanized Heel-Proof Ductile ADA Grate - Class E	154.00
-HPDE-USA	Heel-Proof Ductile ADA Grate - Class E	111.00
-PG	Perforated Galvanized Steel ADA Grate - Class A	17.00
-PS	Perforated Stainless Steel ADA Grate - Class A	141.00
-SSCD	Reinforced Stainless Steel Solid Cover - Class B	410.00

MISCELLANEOUS OPTIONS		ADD/FOOT
-CBF	Black Acid Resistant Coated Top Frame	35.00
-CWF	White Acid Resistant Coated Top Frame	35.00
-GFA	Galvanized Welded Frame Assembly	37.00
-SF	Type 304 Stainless Steel Top Frame	198.00

		ADD/EACH
-DB	Bottom Dome Strainer	98.00

SERVICE CHARGES		ADD/EACH
Fabrication	- 45°; 90°; Tee; Side Outlet Fabs	508.00
	- Cross Fabs	1,014.00
Cutting		131.00

For additional product information, please visit www.zurn.com.

*Regularly furnished unless otherwise specified.

‡Indicates grate will be shipped unpainted. For an additional charge, Zurn will paint the grates. Please contact your customer service representative for pricing.

ZF817 CATCH BASIN



Standard Grate Included: DGC

ENGINEERING SPECIFICATION

Catch Basins shall be 6" wide x 20" long x 20" deep, 12" wide x 24" long x 24" deep, or 24" wide x 24" long x 24" deep and shall be made of Fiber Reinforced Polyester (FRP) fiberglass. Choices of class A thru F grates shall be available with H-20, FAA, and/or ADA compliance. Outlets in 2", 3", 4", 6", and 8" diameters shall be available. Catch Basin shall be Flo-Thru model ZF817.

NOTE

White acid resistant coating also available for frame and grate
Please contact customer care for mechanical lockdown availability and pricing.
Outlets also available in 10" and 12" - POA.

PREFIX	DESCRIPTION	TOP SIZE	APPROX. WT. LBS.	PER FOOT	
ZF*	Fiber Reinforced Polyester (FRP) Fiberglass Body with Heavy-Duty Steel Frame and Ductile Iron Grate - Class C	6 x 20	11	545.00	
		12 x 24	36	769.00	
		24 x 24	50	1068.00	
ZFB	Vinylester Fiberglass Body with Heavy-Duty Steel Frame and Ductile Iron Grate - Class C	6 x 20	11	816.00	
		12 x 24	36	1034.00	
		24 x 24	50	1326.00	
OUTLET ADAPTERS				ADD/EACH	
			ZF*	ZFB	
-E4/U4	4" No-Hub End Outlet Adapter		72.00	97.00	
-E6/U6	6" No-Hub End Outlet Adapter		72.00	97.00	
-E8/U8	8" No-Hub End Outlet Adapter		72.00	97.00	
-IA	Inlet Adapter (if more than one required) For Z806 Trench System		72.00	116.00	
-IA	Inlet Adapter (if more than one required) For Z812 Trench System		131.00	204.00	
GRATE OPTIONS - ADD PER BASIN (FULL GRATE)			6X20	12X24	24X24
-BCD	Bronze Circular Decorative Grate - Class A		286.00	N/A	N/A
-BDD	Bronze Diagonal Decorative Grate - Class A		286.00	N/A	N/A
-BG	Galvanized Ductile Iron Bar Grate - Class C		72.00	N/A	N/A
	Galvanized Ductile Iron Bar Grate - Class D		N/A	143.00	N/A
-DC	Ductile Iron Solid Cover - Class C		72.00	N/A	N/A
	Ductile Iron Solid Cover - Class E		N/A	143.00	N/A
-DCD	Ductile Circular Decorative Grate - Class C		72.00	N/A	N/A
-DDD	Ductile Diagonal Decorative Grate - Class A		72.00	N/A	N/A
-DGC	Ductile Iron Slotted Grate - Class C		*	*	*
-DGE	Ductile Iron Slotted Grate - Class E		72.00	143.00	N/A
-DGF	Ductile Iron Slotted Grate - Class F		N/A	286.00	570.00
-DOG	Ductile Decorative Grate - Class B		72.00	N/A	N/A
-DTW	Ductile Iron Tidal Wave Grate - Class C		74.00	N/A	N/A
-DWV	Ductile Wave Decorative Grate - Class A		72.00	N/A	N/A
-GDC	Galvanized Cast Iron Grate - Class C		36.00	175.00	318.00
-GDE	Galvanized Ductile Grate - Class E		96.00	207.00	N/A
-GDF	Galvanized Ductile Grate - Class F		N/A	318.00	632.00
-GG	Fiberglass Grate - Class A		106.00	211.00	368.00
-GHPDE	Galvanized Heel-Proof Ductile ADA Grate - Class E		131.00	254.00	N/A
-HPB	Bronze Heel-Proof Slotted Grate - Class A		286.00	N/A	N/A
-HPD	Heel-Proof Ductile ADA Grate - Class B		72.00	211.00	N/A
-HPDE	Heel-Proof Ductile ADA Grate - Class E		106.00	225.00	N/A

GRATE OPTIONS - ADD PER BASIN (FULL GRATE)		6X20	12X24	24X24
-HPP	Heel-Proof Polyethylene ADA Grate - Class A	36.00	N/A	N/A
-HPS	Stainless Steel Heel-Proof Slotted Grate - Class A	254.00	N/A	N/A
-LD	Ductile Iron Longitudinal Slotted Grate - Class B	72.00	N/A	N/A
-PS	Perforated Stainless Steel Grate - Class A	78.00	153.00	304.00
-RFGC	Reinforced Galvanized Steel Slotted Grate - Class C	83.00	177.00	N/A
-RFSC	Reinforced Stainless Steel Slotted Grate - Class C	329.00	437.00	N/A
-RPGC	Reinforced Galvanized Perforated ADA Grate - Class C	83.00	177.00	N/A
-RPGRC	Reinforced Galvanized Perforated Reverse Punch Anti-Slip ADA Grate - Class C	83.00	177.00	N/A
-RPSC	Reinforced Stainless Steel Perforated ADA Grate - Class C	329.00	437.00	N/A
-RPSRC	Reinforced Stainless Steel Perforated Reverse Punch Anti-Slip ADA Grate - Class C	329.00	437.00	N/A
-SBG	Stainless Steel Bar Grate - Class E	286.00	N/A	N/A
-SBG-L	Stainless Steel Bar Grate - Class C	N/A	380.00	N/A
-SCD	Stainless Steel Circular Decorative Grate - Class B	286.00	N/A	N/A
-SDD	Stainless Steel Diagonal Decorative Grate - Class B	286.00	N/A	N/A
-SOG	Stainless Steel Decorative Grate - Class B	286.00	N/A	N/A
MISCELLANEOUS OPTIONS				
-CBF	Black Acid Resistant Coated Frame	71.00	140.00	279.00
-FT	Foul Air Trap	POA	POA	POA
-GFA	Galvanized Extra-Heavy-Duty Frame Assembly with Studs	71.00	140.00	279.00
-SF	Type 304 Stainless Steel Top Frame	443.00	884.00	1326.00
-Y	Sediment Bucket	148.00	192.00	254.00
-YS	Stainless Steel Sediment Bucket	286.00	412.00	695.00

MADE IN THE U.S.A. (HIGHLIGHTED IN GRAY)

GRATE OPTIONS - ADD PER BASIN (FULL GRATE)		6X20	12X24	24X24
-ADA- USA	Meets Americans with Disabilities Act Requirements - Class C	N/A	140.00	N/A
-AWG	Aluminum Wire Grate - Class A	POA	N/A	N/A
-BZ	Bronze Decorative Grate - Class A	286.00	N/A	N/A
-BDE- USA	Black Acid Resistant Epoxy Coated Ductile Grate - Class E	128.00	216.00	N/A
-DCE-USA	Ductile Solid Cover - Class E	89.00	N/A	N/A
-DGC-USA	Ductile Iron Slotted Grate - Class C	78.00	134.00	N/A
-DGE-USA	Ductile Iron Slotted Grate - Class E	86.00	149.00	N/A
-FG	Galvanized Steel Slotted Grate - Class A	37.00	72.00	143.00
-FS	Fabricated Stainless Steel Slotted Grate - Class A	78.00	153.00	304.00
-GADA-USA	Galvanized Ductile ADA Slotted Grate - Class C	N/A	192.00	N/A
-GDC-USA	Galvanized Ductile Grate - Class C	90.00	178.00	N/A
-GDE-USA	Galvanized Ductile Grate - Class E	106.00	211.00	N/A
-NBZ USA	Nickel Bronze Decorative Grate - Class A	POA	N/A	N/A
-PG	Galvanized Steel Perforated Grate - Class A	37.00	72.00	143.00
-PPC	Plastic Perforated ADA Grate - Class C	122.00	N/A	N/A
-PS	Perforated Stainless Steel ADA Grate - Class A	78.00	153.00	304.00
-SWG	Stainless Steel Wire Grate - Class A	POA	N/A	N/A

*Regularly furnished unless otherwise specified.

†Indicates grate will be shipped unpainted. For an additional charge, Zurn will paint the grates. Please contact your customer service representative for pricing.

For additional product information, please visit www.zurn.com.

Z888-4 SLOTTED DRAINAGE SYSTEM



Standard Length: 40" (3.33')

ENGINEERING SPECIFICATION

Slot drain shall be 40" long, 4" wide, and 8" invert with 1/2" slot opening (ADA compliant). Drain shall be made of High Density Polyethylene (HDPE) and be UV-10 stabilized. Drain shall have rebar clips molded onto bedding feet and/or bedding feet shall be used for positioning and anchoring purposes. Overlap connection shall be interlocked.



MADE IN THE U.S.A. (HIGHLIGHTED IN GRAY)

PREFIX	DESCRIPTION	PER FOOT
Z	40" High Density Polyethylene (HDPE) Slot Drain	44.00
ADAPTERS		ADD/EACH
-E1	Closed End Cap	18.00
-E2	2" No-Hub End Outlet	18.00
-E3	3" No-Hub End Outlet	18.00
-E4	4" No-Hub End Outlet	18.00
-U2	2" No-Hub Bottom Outlet	18.00
-U3	3" No-Hub Bottom Outlet	18.00
-U4	4" No-Hub Bottom Outlet	18.00
FRAME OPTIONS		ADD/FOOT
-EXT	4" Extension	9.00
-PVSS	Stainless Steel Frame with Slot	119.00
MISCELLANEOUS OPTIONS		ADD/EACH
-RD	Radius Connector	41.00
-WS25	1/4" Wide Heel-Proof Slots	N/C
-WS75	3/4" Wide Slots	N/C
-90	90-Degree Connector	41.00

Z888-6 SLOTTED DRAINAGE SYSTEM



Standard Length: 40" (3.33')

ENGINEERING SPECIFICATION

Slot drain shall be 40" long, 4" wide, and 11-3/4" invert with 1/2" slot opening (ADA compliant). Drain shall be made of High Density Polyethylene (HDPE) and be UV-10 stabilized. Drain shall have rebar clips molded onto bedding feet and/or bedding feet shall be used for positioning and anchoring purposes. Overlap connection shall be interlocked.



MADE IN THE U.S.A. (HIGHLIGHTED IN GRAY)

PREFIX	DESCRIPTION	PER FOOT
Z	40" High Density Polyethylene (HDPE) Slot Drain	52.00
ADAPTERS		ADD/EACH
-E1	Closed End Cap	20.00
-E2	2" No-Hub End Outlet	20.00
-E3	3" No-Hub End Outlet	20.00
-E4	4" No-Hub End Outlet	20.00
-U2	2" No-Hub Bottom Outlet	18.00
-U3	3" No-Hub Bottom Outlet	18.00
-U4	4" No-Hub Bottom Outlet	18.00
FRAME OPTIONS		ADD/FOOT
-EXT	4" Extension	9.00
-PVSS	Stainless Steel Frame with Slot	119.00
MISCELLANEOUS OPTIONS		ADD/EACH
-WS25	1/4" Wide Heel-Proof Slots	N/C
-WS75	3/4" Wide Slots	N/C

Z888-8 SLOTTED DRAINAGE SYSTEM



Standard Length: 40" (3.33')

ENGINEERING SPECIFICATION

Slot drain shall be 40" long, 4" wide, and 17-5/8" invert with 1/2" wide slot opening (ADA compliant). Drain shall be made of High Density Polyethylene (HDPE) and be UV-10 stabilized. Drain shall have rebar clips molded onto bedding feet and/or bedding feet shall be used for positioning and anchoring purposes. Overlap connection shall be interlocked.



MADE IN THE U.S.A. (HIGHLIGHTED IN GRAY)

PREFIX	DESCRIPTION	PER FOOT
Z	40" High Density Polyethylene (HDPE) Slot Drain	62.00
ADAPTERS		ADD/EACH
-E1	Closed End Cap	25.00
-E2	2" No-Hub End Outlet	25.00
-E3	3" No-Hub End Outlet	25.00
-E4	4" No-Hub End Outlet	25.00
-U2	2" No-Hub Bottom Outlet	18.00
-U3	3" No-Hub Bottom Outlet	18.00
-U4	4" No-Hub Bottom Outlet	18.00
FRAME OPTIONS		ADD/FOOT
-EXT	4" Extension	9.00
-PVSS	Stainless Steel Frame with Slot	119.00
MISCELLANEOUS OPTIONS		ADD/EACH
-WS25	1/4" Wide Heel-Proof Slots	N/C
-WS75	3/4" Wide Slots	N/C

For additional product information, please visit www.zurn.com.

*Regularly furnished unless otherwise specified.

†Indicates grate will be shipped unpainted. For an additional charge, Zurn will paint the grates. Please contact your customer service representative for pricing.

Z888-12,-18,-36 HIGH CAPACITY TRENCH DRAIN SYSTEM SLOTTED DRAINAGE SYSTEM



Standard Length: 80" (6.67')

ENGINEERING SPECIFICATION

Slot drain shall be 80" long, Z888-12 (14-1/4" deep and 12" wide); Z888-18 (21" deep and 12" wide); or Z888-36 (31" deep and 23" wide). Slot shall be 1-3/4" wide and have spacer bars at 5" intervals to keep sides of slot apart. Drain shall be made of Linear Low Density Polyethylene (LLDPE). Drain shall have tongue-and-groove interlocking ends and clips molded into the sides of the channel to accommodate vertical rebar for positioning and anchoring purposes. Drain shall be available with a choice of pedestrian, bicycle, FAA, and/or H-20 grates. End outlets, bottom outlets, and side outlets shall be available in 4", 6", 8", 12", 18", 24", and 36" diameters along with Cleanout sections (Z889-12, Z889-18, and Z889-36). Slot drain shall be Flo-Thru model Z888-12, Z888-18, or Z888-36.



MADE IN THE U.S.A. (HIGHLIGHTED IN GRAY)

PREFIX	DESCRIPTION	CHANNEL NUMBER	PER FOOT	
Z	80" Linear Low Density Polyethylene (LLDPE) Slot Drain	Z888-12	98.00	
		Z888-18	115.00	
		Z888-36	169.00	
FRAME OPTIONS			ADD/FOOT	
-HD	Ductile Iron Frame with Slot		72.00	
-HDG	Galvanized Ductile Iron Frame with Slot		89.00	
-HPD	Heel-Proof Ductile Iron Frame and Grate		72.00	
-HPG	Galvanized Heel-Proof Ductile Iron Frame and Grate		89.00	
ADAPTERS			ADD/EACH	
		Z888-12	Z888-18	Z888-36
-E1	Closed End Cap	155.00	185.00	231.00
-E4	4" No-Hub End Outlet	318.00	N/A	N/A
-E6	6" No-Hub End Outlet	318.00	N/A	N/A
-E8	8" No-Hub End Outlet	318.00	387.00	N/A
-E12	12" No-Hub End Outlet	462.00	462.00	POA
-E18	18" No-Hub End Outlet	N/A	651.00	POA
-E24	24" No-Hub End Outlet	N/A	923.00	POA
-E36	36" No-Hub End Outlet	N/A	N/A	POA
FRAME OPTIONS			ADD/FOOT	
-PSF	Pre-Sloped Frame		POA	
MISCELLANEOUS OPTIONS			ADD/EACH	
-T12/18	Transition from -12 to -18		632.00	
-T18/12	Transition from -18 to -12		632.00	
-T18/36	Transition from -18 to -36		POA	

Z889-12,-18,-36 HIGH CAPACITY CLEANOUT PORT



Standard Length: 24"

Standard Grate: H20 Ductile Frame/Grate

ENGINEERING SPECIFICATION

Slot drain Cleanout Port shall be 24" long, Z889-12 (14-1/4" deep and 12" wide); Z889-18 (21" deep and 12" wide); or Z889-36 (31" deep and 23" wide). The grate shall be 8" wide. Cleanout Port shall be made of Linear Low Density Polyethylene (LLDPE), tongue-and-groove interlocking ends, and clips molded into the sides of the channel to accommodate vertical rebar for positioning and anchoring purposes. Cleanout Port shall be available with a choice of pedestrian, bicycle, FAA, and/or H-20 grates. End outlets, bottom outlets, and side outlets shall be available in 4", 6", 8", 12", 18", 24", and 36" diameters. Slot drain Cleanout Port shall be Flo-Thru model Z889-12, Z889-18, or Z889-36.



MADE IN THE U.S.A. (HIGHLIGHTED IN GRAY)

PREFIX	DESCRIPTION	CHANNEL NUMBER	PER FOOT		
Z	24" High Capacity Cleanout Port	Z889-12	884.00		
		Z889-18	884.00		
		Z889-36	1,514.00		
FRAME OPTIONS			ADD/EACH		
-HDG	Galvanized Ductile Iron Frame with Slot		354.00		
-HPD	Heel-Proof Ductile Iron Frame and Grate		254.00		
-HPG	Galvanized Heel-Proof Ductile Iron Frame and Grate		354.00		
ADAPTERS			ADD/EACH		
			Z889-12	Z889-18	Z889-36
-E1	Closed End Cap		155.00	185.00	231.00
-E4	4" No-Hub End Outlet		318.00	N/A	N/A
-E6	6" No-Hub End Outlet		318.00	N/A	N/A
-E8	8" No-Hub End Outlet		318.00	387.00	N/A
-E12	12" No-Hub End Outlet		462.00	462.00	POA
-E18	18" No-Hub End Outlet		N/A	651.00	POA
-E24	24" No-Hub End Outlet		N/A	923.00	POA
-E36	36" No-Hub End Outlet		N/A	N/A	POA
MISCELLANEOUS OPTIONS			ADD/EACH		
-T12/18	Transition from -12 to -18		632.00		
-T18/12	Transition from -18 to -12		632.00		
-T18/36	Transition from -18 to -36		POA		

*Regularly furnished unless otherwise specified.

†Indicates grate will be shipped unpainted. For an additional charge, Zurn will paint the grates. Please contact your customer service representative for pricing.

For additional product information, please visit www.zurn.com.

ZA880-156 EXTRUDED ALUMINUM TRENCH DRAIN SYSTEM



Standard Length: 8'
Standard Grate Included: BZ

ENGINEERING SPECIFICATION

Zurn ZA880-156 Extruded Aluminum Trench Drain System. 1.63" interior width x 4" overall height x 8' long. Complete with 1.5" wide flanges on side. Material to be Aluminum Alloy T-6063. Cast bronze decorative grate conforms to ASTM B584 Copper Alloy No. 844. Trench is anodized after extrusion to match grate color.

PREFIX	DESCRIPTION	NO. OF GRATES PER CHANNEL	PER FOOT
ZA*	8' Extruded Aluminum Trench Drain System with Bronze Decorative Grate	4	380.00
OUTLET ADAPTERS			ADD/EACH
-E1	Closed End Cap		153.00
-E1.5	1-1/2" No-Hub End Outlet		134.00
-U1.5	1-1/2" No-Hub Bottom Outlet		134.00
GRATE OPTIONS			ADD/FOOT
-AWG	Aluminum Wire Grate - Class A		POA
-AZ	Aluminum Decorative Grate - Class A		N/C
-BZ	Bronze Decorative Grate - Class A		*
-NBZ	Nickel Bronze Decorative Grate - Class A		14.00
MISCELLANEOUS OPTIONS			ADD/FOOT
-K	Anchor Flange		14.00
-KC	Clamp Collar and Pan (Includes -K)		448.00
-LF	Leveling Feet		178.00
SERVICE CHARGES			ADD/EACH
Fabrication	- 45°; 90°; Tee Fabs		378.00
	- Cross Fabs		761.00

ZA880-300A EXTRUDED ALUMINUM TRENCH DRAIN SYSTEM (PRICING WITHOUT GRATE)

ENGINEERING SPECIFICATION

Zurn ZA880-300A Extruded Aluminum Trench Drain System. 3.00" interior width x 6" overall height x 8' long. Complete with 2" wide flanges on both sides. Material to be Aluminum Alloy T-6063. Available with aluminum, bronze, ductile iron, and nickel bronze grates. Trench is anodized after extrusion to match grate color.

		NO. OF GRATES PER CHANNEL		
PREFIX	DESCRIPTION		CHANNEL NUMBER	PER FOOT
ZA	8' Extruded Aluminum Trench Drain System	4	880-300A	380.00
			880-300B	380.00
			880-340	380.00
OUTLET ADAPTERS				ADD/EACH
-E1	Closed End Outlet			178.00
-U2	2" No-Hub Bottom Outlet Channel			197.00
GRATE OPTIONS				ADD/FOOT
-AWG	Aluminum Wire Grate - Class A			POA
-AZ	Aluminum Decorative Grate - Class A			POA
-BZ	Bronze Decorative Grate - Class A			259.00
-DOG	Ductile Decorative Grate - Class A			65.00
-NBZ	Nickel Bronze Decorative Grate - Class A			361.00
MISCELLANEOUS OPTIONS				ADD/FOOT
-K	Anchor Flange			14.00
-KC	Clamp Collar and Pan (Includes -K)			448.00
-LF	Leveling Feet (ZA880-340 Only) .			21.00
SERVICE CHARGES				ADD/EACH
Fabrication	- 45°; 90°; Tee Fabs			378.00
	- Cross Fabs			761.00

ZA880-300B EXTRUDED ALUMINUM TRENCH DRAIN SYSTEM (PRICING WITHOUT GRATE)

ENGINEERING SPECIFICATION

Zurn ZA880-300B Extruded Aluminum Trench Drain System. 3.00" interior width x 6" overall height x 8' long. Complete with 1.5" wide flanges on both sides. Material to be Aluminum Alloy T-6063. Available with aluminum, bronze, ductile iron, and nickel bronze grates. Trench is anodized after extrusion to match grate color.

ZA880-340 EXTRUDED ALUMINUM TRENCH DRAIN SYSTEM (PRICING WITHOUT GRATE)

ENGINEERING SPECIFICATION

Zurn ZA880-340 Extruded Aluminum Trench Drain System. 3.00" interior width x 4" overall height x 8' long. Material to be Aluminum Alloy T-6063. Available with aluminum, bronze, and nickel bronze grates. Trench is anodized after extrusion to match grate color.

ZS880 STAINLESS STEEL LINEAR SHOWER DRAIN



Standard Length: 24"
Standard Grate: -LS (Linear Slotted)

ENGINEERING SPECIFICATION

ZS880 All Type 304 (CF8) Fabricated Stainless Steel Linear Shower Drain. Complete with vertically adjustable anchoring support legs, anti-ponding V-shaped channel with 2" No-Hub outlet, adjustable secured leveling frame with integral tiling edge, and secured, light-duty, slotted heel-proof grate

NOTES

**ZR Includes cost add for grate finish.



-LS



-BW



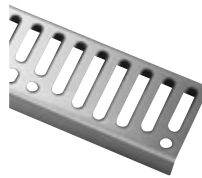
-DB



-SG



-TG (Tile By Others)



-WG

PREFIX	DESCRIPTION	PRODUCT DESIGNATION	APPROX WT. LBS.	GRATE OPEN AREA SQ. IN.	PER FOOT
ZS*	Type 304 (CF8) Stainless Steel	-12	2.9	6	1,067.00
		-28	5.4	15	1,109.00
		-32	5.9	18	1,114.00
		-36	6.4	20	1,123.00
		-40	7.2	22	1,165.00
		-48	8.4	27	1,248.00
		-60	10.3	34	1,319.00
		-72	12.4	41	1,583.00
ZR**	Type 304 (CF8) Stainless Steel	-12	2.9	6	1,148.00
		-28	5.4	15	1,199.00
		-32	5.9	18	1,253.00
		-36	6.4	20	1,279.00
		-40	7.2	22	1,338.00
		-48	8.4	27	1,462.00
		-60	10.3	34	1,576.00
		-72	12.4	41	1,891.00

OUTLET ADAPTERS			ADD/EACH
-2	Two-Outlet Drain Body		67.00
-2IP	2" Female Threaded Outlet (Add Per Outlet Connection)		69.00
-3	Three-Outlet Drain Body		133.00
-CS	Straight Connector		52.00
-C45	45 Degree Connector		57.00
-C90	90 Degree Connector		57.00
-EO	End Outlet		N/C
-FS	Outlet Filter Screen		25.00
-LB	Lower Drain Body		39.00
-SO	2" No-Hub Side Outlet (Add Per Outlet Connection)		55.00
STANDARD GRATE OPTIONS			LIST/ADD
-LS*	Linear Slotted		N/C
DECORATIVE GRATE OPTIONS			LIST/ADD
-BW	Basket Weave	-12	21.00
		-28	31.00
		-32	41.00
		-36	44.00
		-40	49.00
		-48	60.00
		-60	75.00
		-72	90.00
-DB	Decorative Block Grate	-12	21.00
		-28	31.00
		-32	41.00
		-36	44.00
		-40	49.00
		-48	60.00
		-60	75.00
		-72	90.00
-SG	Serenity Grate	-12	21.00
		-28	31.00
		-32	41.00
		-36	44.00
		-40	49.00
		-48	60.00
		-60	75.00
		-72	90.00
-TG	Tile Inlay Grate	-12	21.00
		-28	31.00
		-32	41.00
		-36	44.00
		-40	49.00
		-48	60.00
		-60	75.00
		-72	90.00
-WG	Slotted Wave Grate	-12	21.00
		-28	31.00
		-32	41.00
		-36	44.00
		-40	49.00
		-48	60.00
		-60	75.00
		-72	90.00

*Regularly furnished unless otherwise specified.

†Indicates grate will be shipped unpainted. For an additional charge, Zurn will paint the grates. Please contact your customer service representative for pricing.

For additional product information, please visit www.zurn.com.

Z890 6" STAINLESS STEEL TRENCH DRAIN SYSTEM



Standard Length: 5'
Standard Grate Included: FS or PS

ENGINEERING SPECIFICATION

Channels shall be 5' long, 6" wide, and have a 4" wide throat. Modular channel sections shall be made of 16-gauge 304 stainless steel and shall be provided with a gasket for flanged connections. Channel shall be provided either flat (neutral) or with a 1.04% pre-slope. Channels shall be available with inverts ranging from 3.5" to 16.00". Choices of class A thru E grates shall be available with H-20 and/or FAA load ratings and/or ADA compliance with mechanical lockdown devices. End caps and catch basins shall be available to complement the channels and grates. End outlets, bottom outlets, and side outlets shall be available in 2", 3", 4", and 6" diameters. Trench drain shall be Flo-Thru model Z890.

NOTES

Type 316 Stainless Steel trench is available upon request. Please call customer care for pricing and lead time.

PREFIX	DESCRIPTION	CHANNEL NUMBER	NO. OF GATES/ANCHOR STRAPS	PER FOOT
Z*	5' #16-Gauge Type 304 Stainless Steel Trench with Fabricated Stainless Steel Grate with Four Stainless Steel Lockdowns	89001 thru 89015	3	378.00
				ADD/EACH
Endcaps/Outlet				296.00

GRATE OPTIONS		ADD/EACH
-GG	Fiberglass Grate - Class A	57.00
-HPS	Heel-Proof Stainless Steel Slotted Grate - Class A	237.00
-RFSC	Reinforced Stainless Steel Slotted Grate - Class C	83.00
-RPSC	Reinforced Stainless Steel Perforated Grate - Class C	83.00
-RPSRC	Reinforced Stainless Steel Perforated Reverse Punch Anti-Slip Grate - Class C	83.00
-SBG	Stainless Steel Bar Grate - Class E	286.00
-SCD	Stainless Steel Circular Decorative Grate - Class B	260.00
-SDD	Stainless Steel Diagonal Decorative Grate - Class B	260.00
-SOG	Stainless Steel Decorative Grate - Class B	260.00

MADE IN THE U.S.A. (HIGHLIGHTED IN GRAY)

GRATE OPTIONS		ADD/FOOT
-FS	Fabricated Stainless Steel Slotted Grate - Class A	*
-PS	Stainless Steel Perforated Grate - Class A	*
-PSR	Stainless Steel Perforated Reverse Punch Anti-Slip Grate - Class A	N/C

DECORATIVE GRATE OPTIONS		ADD/FOOT
-NBZ-USA	Nickel Bronze Decorative Grate - Class A	POA

MISCELLANEOUS OPTIONS		ADD/FOOT
-K	Anchor Flange	107.00
-KC	Clamp Collar and Pan with Weep Holes	178.00
-VP	Vandal-Proof Center Lockdown	8.00

		ADD/EACH
-DB	Bottom Drop-In Bucket	296.00

SERVICE CHARGES		ADD/EACH
Fabrication - 45°; 90°; Tee Fabs		2,355.00
- Cross Fabs		4,710.00

Trench Number	Shallow Invert		Deep Invert		Flow Rate			Approx. Wt.	
	In.	mm	In.	mm	cfs	gpm	lps	Lbs.	Kg
89001	3.5	89	4.13	105	97	6	0.216	20	9
89002	4.13	105	4.76	121	124	8	0.276	21	9.5
89002N	-	-	-	-	-	-	-	22	10
89003	4.76	121	5.39	137	151	10	0.336	23	10.4
89004	5.39	137	6.02	153	179	11	0.399	24	10.9
89004N	-	-	-	-	-	-	-	25	11.3
89005	6.02	153	6.65	169	207	13	0.461	26	11.8
89006	6.65	169	7.28	185	235	15	0.524	27	12.2
89006N	-	-	-	-	-	-	-	28	12.7
89007	7.28	185	7.91	201	263	17	0.586	29	13.1
89008	7.91	201	8.54	217	292	18	0.651	30	13.6
89008N	-	-	-	-	-	-	-	31	14
89009	8.54	217	9.17	233	321	20	0.715	32	14.5
89010	9.17	233	9.8	249	349	22	0.778	34	15.4
89010N	-	-	-	-	-	-	-	35	15.9
89011	9.8	249	10.43	265	378	24	0.842	35	15.9
89012	10.43	265	11.06	281	407	26	0.907	37	16.8
89012N	-	-	-	-	-	-	-	38	17.2
89013	11.06	281	11.69	297	436	28	0.971	39	17.7
89014	11.69	297	12.32	313	465	29	1.036	40	18.1
89014N	-	-	-	-	-	-	-	41	18.6
89015	12.32	313	12.95	329	494	31	1.101	42	19
89016	12.95	329	13.58	345	523	33	1.165	43	19.5
89016N	-	-	-	-	-	-	-	44	20
89017	13.58	345	14.21	361	552	35	1.23	45	20.4
89018	14.21	361	14.84	377	581	37	1.295	46	20.8
89018N	-	-	-	-	-	-	-	47	21.3
89019	14.84	377	15.47	393	610	39	1.359	48	21.8
89020	15.47	393	16.1	409	639	40	1.424	49	22.2

For additional product information, please visit www.zurn.com.

*Regularly furnished unless otherwise specified.

†Indicates grate will be shipped unpainted. For an additional charge, Zurn will paint the grates. Please contact your customer service representative for pricing.

Z895 12" STAINLESS STEEL TRENCH DRAIN SYSTEM



Standard Length: 5'
Standard Grate Included: FS or PS

ENGINEERING SPECIFICATION

Channels shall be 5' long, 12" wide, and have a 9-1/4" wide throat. Modular channel sections shall be made of 12-gauge 304 stainless steel. Channel shall be provided with no slope (neutral) or with a 1.04% built-in slope. Channels shall be available with inverts ranging from 6.00" to 18.50". Choices of class A thru C grates shall be available with H-20 and/or FAA load ratings and/or ADA compliance with mechanical lockdown devices. End caps and catch basins shall be available to complement the channels and grates. End outlets, bottom outlets, and side outlets shall be available in 4", 6", and 8" diameters. Trench drain shall be Flo-Thru model Z895.

NOTES

Type 316 Stainless Steel trench is available upon request. Please call customer care for pricing and lead time.

MADE IN THE U.S.A. (HIGHLIGHTED IN GRAY)				
PREFIX	DESCRIPTION	CHANNEL NUMBER	NO. OF GATES/ANCHOR STRAPS	PER FOOT
Z*	5' #12-Gauge Type 304 Stainless Steel Trench with Stamped Stainless Steel Grate with Four Stainless Steel Lockdowns	89501 thru 89515	3	937.00
OPTIONS				ADD/EACH
Endcaps/Outlet				367.00
GRATE OPTIONS				ADD/FOOT
- FS	Fabricated Stainless Steel Slotted Grate - Class A			*
- GG	Fiberglass Grate (Not Made in U.S.A. Configurable) - Class A			42.00
- PS	Stainless Steel Perforated Grate - Class A			*
- PSR	Stainless Steel Perforated Reverse Punch Grate - Class A			N/C
- RFSC	Reinforced Stainless Steel Slotted Grate - Class C			98.00
- RPSC	Reinforced Stainless Steel Perforated Grate - Class C			98.00
- RPSRC	Reinforced Stainless Steel Perforated Reverse Punch Anti-Slip Grate - Class B			98.00
- SBG-L	Stainless Steel Bar Grate - Class C			410.00
- SSCD	Reinforced Stainless Steel Solid Cover - Class B			84.00
MISCELLANEOUS OPTIONS				ADD/FOOT
- K	Anchor Flange			137.00
- KC	Clamp Collar and Pan with Weep Holes			207.00
- VP	Vandal-Proof Center Lockdown			8.00
				ADD/EACH
- DB	Bottom Drop-In Bucket			296.00
SERVICE CHARGES				ADD/EACH
Fabrication - 45°; 90°; Tee Fabs				2,945.00
- Cross Fabs				5,888.00

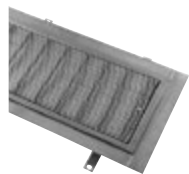
Trench Number	Shallow Invert		Deep Invert		Flow Rate			Approx. Wt.	
	In.	mm	In.	mm	cfs	gpm	lps	Lbs.	Kg
89501	6.00	152	6.63	168	548	35	1.221	70	31.7
89502	6.63	168	7.25	184	652	41	1.453	73	33.1
89502N	7.25	184	7.25	184	-	-	-	74	33.5
89503	7.25	184	7.88	200	759	48	1.691	76	34.5
89504	7.88	200	8.50	216	868	55	1.934	80	36.3
89504N	8.50	216	8.50	216	-	-	-	81	36.7
89505	8.50	216	9.13	232	978	62	3.179	83	37.6
89506	9.13	232	9.75	248	1090	69	2.429	86	39
89506N	9.75	248	9.75	248	-	-	-	87	39.4
89507	9.75	248	10.38	264	1203	76	2.68	90	40.8
89508	10.38	264	11.00	279	1316	83	2.932	93	42.2
89508N	11.00	279	11.00	279	-	-	-	94	42.6
89509	11.00	279	11.63	295	1431	91	3.189	96	43.5
89510	11.63	295	12.25	311	1546	98	3.445	99	44.9
89511	12.25	311	12.88	327	1662	105	3.703	103	46.7
89512	12.88	327	13.50	343	1779	113	3.964	106	48
89512N	13.50	343	13.50	343	-	-	-	107	48.5
89513	13.50	343	14.13	359	1896	120	4.225	109	49.4
89514	14.13	359	14.75	375	2013	127	4.485	113	51.2
89514N	14.75	375	14.75	375	-	-	-	114	51.7
89515	14.75	375	15.38	391	2113	135	4.748	116	52.6
89516	15.38	391	16.00	406	2249	142	5.011	119	54
89516N	16.00	406	16.00	406	-	-	-	120	54.4
89517	16.00	406	16.63	422	2368	150	5.276	122	55.3
89518	16.63	422	17.25	438	2487	157	5.541	126	57.1
89518N	17.25	438	17.25	438	-	-	-	127	57.6
89519	17.25	438	17.88	454	2606	165	5.807	129	58.5
89520	17.88	454	18.50	470	2752	174	6.132	132	59.9

*Regularly furnished unless otherwise specified.

†Indicates grate will be shipped unpainted. For an additional charge, Zurn will paint the grates. Please contact your customer service representative for pricing.

For additional product information, please visit www.zurn.com.

Z899 ELEVATOR TRENCH DRAIN SYSTEM



Standard Length: Custom sizes from 36"-96"
Standard Grate Included: SWG

ENGINEERING SPECIFICATION

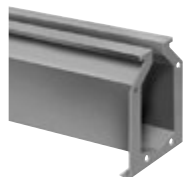
ZURN Z899 Overall channel width shall be 11-1/2" [292mm] and have an 9-3/8" [238mm] throat. Channels are made of #12 ga. fabricated stainless steel conforming to ASTM A-240 (type 304) and will include anchoring straps. The outlet on each channel will be centered. Channel to be provided with custom -SWG stainless steel wire grate, conforming to ASTM A-240 (type 304), that locks down to the channel with vandal-proof flathead machine screws. This grate is rated for Class A per the DIN EN1433 top load classification, complies with both ADA and Heel-Proof requirements, and has an open area of 64.9 sq. in/ft. [1373.7 sq. cm/m]. Optional -FS fabricated slotted grate has an open area of 35.91 sq. in/ft [760.1 sq. cm/m] and also complies with ADA and Heel-Proof requirements. This system has been designed to comply with SFFC Code, Section 511.1 for a 100 gpm flow rate. (Replaces Z895-94)

NOTES

Minimum dimensional requirements must be met to satisfy 100 gpm flow rate specification.

MADE IN THE U.S.A. (HIGHLIGHTED IN GRAY)				
PREFIX	DESCRIPTION	CHANNEL NUMBER	NO. OF GATES/ ANCHOR STRAPS	PER FOOT
Z*	Type 304 Stainless Steel (regularly furnished) - Custom sizes from 36"-96"	Z895-94-SWG	6	1,134.00
Z*	Type 316 Stainless Steel - Custom sizes from 36"-96"	Z895-94-FS	6	1,254.00
GRATE OPTIONS				ADD/FOOT
-FS	Fabricated Stainless Steel Slotted Grate (open area = 35.9 sq-in/linear foot)			121.00
-SWG	Stainless Wire Grate (regularly furnished)			*
SUFFIX OPTIONS				ADD/FOOT
-4NH	6" -4" Custom Tapered No-Hub Bottom Outlet (regularly furnished)			*
-6NH	6" No-Hub Bottom Outlet			367.00
MISCELLANEOUS OPTIONS				ADD/FOOT
-DX	Flange			324.00
-P	1/2" Trap Primer Connection			360.00
	Powder Coat (one color)			181.00
	Powder Cost (two-tone)			324.00
-VP	Vandal-Proof Lockdown Assembly			8.00
				DEDUCT/FOOT
-LAS	Less Anchor Straps			-20.00

Z891 STAINLESS STEEL SLOTTED DRAINAGE SYSTEM



Standard Length: 5'

ENGINEERING SPECIFICATION

Channels shall be 5' long, 3/4" wide slot and have a 2-1/4" wide throat. Modular channel sections shall be made of 16-gauge type 304 stainless steel. Channel shall be provided with no slope (neutral) or with a 1.04% built-in slope. Channels shall be available with inverts ranging from 4" to 16.5". End caps and catch basins shall be available to complement the channels. Trench drain shall be Flo-Thru model Z891.

NOTES

Type 316 Stainless Steel trench is available upon request. Please call customer care for pricing and lead time.

PREFIX	DESCRIPTION	PER FOOT
Z*	5' #16 Gauge Type 304 Modular Stainless Steel Slotted Trench Drain with Bolted Flange Connection	455.00
MADE IN THE U.S.A. (HIGHLIGHTED IN GRAY)		
OUTLET ADAPTERS		ADD/EACH
-E1	Closed End Cap	296.00
-E2	2" No-Hub End Outlet	296.00
-U2	2" No-Hub Bottom Outlet	296.00
MISCELLANEOUS OPTIONS		ADD/FOOT
-HD	Class E Heavy Duty Reinforcement	157.00
-K	Waterproofing Flange	119.00
-KC	Pan and Clamping Collar with Weep Holes	178.00

Trench Number	Shallow Invert		Deep Invert		Flow Rate			Approx. Wt.	
	In.	mm	In.	mm	cfs	gpm	lps	Lbs.	Kg
89101	4	102	4.63	118	51	3	194	15	6.8
89102	4.63	118	5.25	133	67	4	255	16	7.3
89103	5.25	133	5.88	149	84	5	316	17	7.7
89104	5.88	149	6.50	165	100	6	378	18	8.2
89105	6.50	165	7.13	181	117	7	441	19	8.6
89106	7.13	181	7.75	197	135	8	504	20	9.1
89107	7.75	197	8.38	213	150	9	568	21	9.6
89108	8.38	213	9.00	229	167	11	632	22	10
89109	9.00	229	9.63	245	184	12	696	23	10.5
89110	9.63	245	10.00	260	201	13	760	24	10.9

Z897 STAINLESS STEEL CATCH BASIN



Standard Grate Included: FS or PS

ENGINEERING SPECIFICATION

Catch Basins shall be 6" wide x 20" long x 20" deep, 12" wide x 24" long x 24" deep, or 24" wide x 24" long x 24" deep and shall be made of #16- or #12-gauge 304 stainless steel. Choices of class A thru E grates shall be available with H-20, FAA, and/or ADA compliance. Outlets in 2", 3", 4", 6", and 8" diameters shall be available. Catch Basin shall be Flo-Thru model Z897.

NOTES

Type 316 Stainless Steel trench is available upon request. Please contact customer care for pricing and lead time. Please contact customer care for mechanical lockdown availability and pricing.

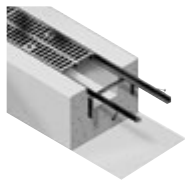
PREFIX	DESCRIPTION	NOMINAL SIZE	APPROX. WT. LBS. (LESS GRATES)	STANDARD PRICE
Z*	Stainless Steel Catch Basin	6x20	49	4,705.00
		12x24	67	5,712.00
		24x24	88	7,625.00
OUTLET OPTIONS				
2", 3", 4", 6"				296.00
GRATE OPTIONS		6X20	12X24	24X24
-GG	Fiberglass Grate - Class A	100.00	197.00	343.00
-HPS	Heel-Proof Stainless Steel Slotted Grate - Class A	237.00	N/A	N/A
-RFSC	Reinforced Stainless Steel Slotted Grate - Class C	307.00	408.00	N/A
-RPSC	Reinforced Stainless Steel Perforated ADA Grate - Class C	307.00	408.00	N/A
-RPSRC	Reinforced Stainless Steel Perforated Reverse Punch Anti-Slip ADA Grate - Class C	307.00	408.00	N/A
-SBG	Stainless Steel Bar Grate - Class E	266.00	N/A	N/A
-SCD	Stainless Steel Circular Decorative Grate - Class B	237.00	N/A	N/A
-SDD	Stainless Steel Diagonal Decorative Grate - Class B	237.00	N/A	N/A
-SOD	Stainless Steel Decorative Grate - Class B	237.00	N/A	N/A
MADE IN THE U.S.A. (HIGHLIGHTED IN GRAY)				
GRATE OPTIONS		6X20	12X24	24X24
-FS	Fabricated Stainless Steel Slotted Grate - Class A	*	*	*
-PS	Perforated Stainless Steel Grate - Class A	*	*	*
-SBG-L	Stainless Steel Bar Grate - Class C	N/A	354.00	N/A
MISCELLANEOUS OPTIONS		ADD		
-K	Anchor Flange	125.00	218.00	311.00
-KC	Clamp Collar and Pan	187.00	279.00	372.00
-VP	Vandal-Proof Center Lockdown	94.00	94.00	94.00
-YS	Stainless Steel Sediment Bucket	266.00	385.00	649.00

*Regularly furnished unless otherwise specified.

†Indicates grate will be shipped unpainted. For an additional charge, Zurn will paint the grates. Please contact your customer service representative for pricing.

For additional product information, please visit www.zurn.com.

Z706 6" WIDE FRAME AND GRATE SYSTEM



Standard Length: 10'
Standard Grate Included: DGC

ENGINEERING SPECIFICATION

ZURN Z706 6" Wide Frame and Grate System. Ten-foot long Dura-Coated 1" x 1" x 1/4" welded structural components with combination anchor tabs/leveling devices and anchor studs at appropriate locations. Complete with Ductile Iron Grate - Class C with lockdown.

NOTES

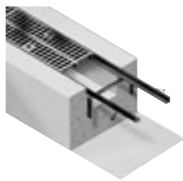
White acid resistant coating also available for frame and grate

PREFIX	DESCRIPTION	NO. OF GRATES/ ANCHOR STRAPS	PER FOOT
Z*	10' Long Frame with Anchor Studs and Combination Anchor Tabs/Leveling Devices with Ductile Iron Grate - Class C with Lockdown	6	112.00
GRATE OPTIONS		ADD/FOOT	
-BDC	Black Acid Resistant Epoxy Coated Ductile Grate - Class C		37.00
-BCD	Bronze Circular Decorative Grate - Class A		286.00
-BDD	Bronze Diagonal Decorative Grate - Class A		286.00
-BDE	Black Acid Resistant Epoxy Coated Ductile Grate - Class E		52.00
-BG	Galvanized Ductile Iron Bar Grate - Class C		23.00
-DBG	Ductile Iron Cast Bar Grate - Class C		14.00
-DCD	Ductile Circular Decorative Grate - Class C		17.00
-DDD	Ductile Diagonal Decorative Grate - Class A		17.00
-DGC	Ductile Iron Slotted Grate - Class C		*
-DGE	Ductile Iron Slotted Grate - Class E		10.00
-DOG	Ductile Decorative Grate - Class B		17.00
-DWV	Ductile Wave Decorative Grate - Class A		17.00
-GDC	Galvanized Ductile Grate - Class C		14.00
-GDE	Galvanized Ductile Grate - Class E		19.00
-GG	Fiberglass Grate - Class A		55.00
-GHPDE	Galvanized Heel-Prove Ductile ADA Grate - Class E		62.00
-HPB	Heel-Proof Bronze Slotted Grate - Class A		286.00
-HPD	Heel-Proof Longitudinal Ductile ADA Grate - Class B		14.00
-HPDE	Heel-Proof Longitudinal Ductile ADA Grate - Class E		35.00
-HPP	Heel-Proof Polyethylene ADA Grate - Class A		6.00
-HPS	Heel-Proof Stainless Steel Slotted ADA Grate		254.00
-RFGC	Reinforced Galvanized Steel Slotted Grate - Class C		12.00
-RFSC	Reinforced Stainless Steel Slotted Grate - Class C		90.00
-RPGC	Reinforced Galvanized Steel Perforated Grate - Class C		12.00
-RPGRC	Reinforced Galvanized Perforated Reverse Punch Anti-Slip Grate - Class C		12.00
-RPSC	Reinforced Stainless Steel Perforated ADA Grate - Class C		90.00
-RPSCR	Reinforced Stainless Steel Perforated Reverse Punch Anti-Slip Grate - Class C		90.00
-SBG	Stainless Steel Bar Grate - Class E		286.00
-SCD	Stainless Steel Circular Decorative Grate - Class B		254.00
-SDD	Stainless Steel Diagonal Decorative Grate - Class B		254.00
-SOG	Stainless Steel Decorative Grate - Class B		254.00
MISCELLANEOUS OPTIONS		ADD/FOOT	
-VP	Vandal-Proof Lockdown Assembly		13.00

MADE IN THE U.S.A. (HIGHLIGHTED IN GRAY)

STANDARD GRATE OPTIONS		ADD/FOOT
-AWG	Aluminum Wire Grate - Class A	POA
-BDE-USA	Black Acid Resistant Epoxy Coated Ductile Grate - Class E	65.00
-DGC-USA	Ductile Iron Slotted Grate - Class C	15.00
-DGE-USA	Ductile Iron Slotted Grate - Class E	22.00
-FS	Fabricated Stainless Steel Slotted Grate - Class A	25.00
-GDC-USA	Galvanized Cast Iron Grate - Class C	29.00
-GDE-USA	Galvanized Ductile Grate - Class E	33.00
-GHPDE-USA	Galvanized Heel-Proof Ductile ADA Grate - Class E	82.00
-HPDE-USA	Heel-Proof Longitudinal Ductile ADA Grate - Class E	54.00
-PPC	Plastic Perforated ADA Grate - Class C	65.00
-PS	Stainless Steel Perforated Grate - Class A	25.00
-PSR	Stainless Steel Perforated Reverse Punch Anti-Slip ADA Grate - Class A	25.00
DEDUCT/FOOT		
-FG	Fabricated Galvanized Steel Slotted Grate - Class A	-9.00
-PG	Perforated Galvanized Steel Grate - Class A	-9.00
-PGR	Galvanized Perforated Reverse Punch Anti-Slip ADA Grate - Class A	-9.00
DECORATIVE GRATE OPTIONS		ADD/FOOT
-BZ	Bronze Decorative Grate - Class A	286.00
-NBZ-USA	Nickel Bronze Decorative Grate - Class A	385.00
-PDE-USA	Ductile Iron Perforated ADA Grate - Class E	152.00
-SWG	Stainless Steel Wire Grate - Class A	POA
FRAME OPTIONS		ADD/FOOT
-CBF	Black Acid Resistant Coated Top Frame	26.00
-GFA	Galvanized Heavy Duty Frame	26.00
-SF	Type 304 Stainless Steel Frame	89.00

Z712 12" WIDE FRAME AND GRATE SYSTEM




Standard Length: 10'
Standard Grate Included: DGC

ENGINEERING SPECIFICATION

Zurn Z712 12" Wide Frame and Grate System. Ten-foot long Dura-Coated 1-3/4" x 1-3/4" x 1/4" angles with anchor studs at appropriate locations. Complete with Ductile Iron Grate - Class C with lockdown.

NOTES

White acid resistant coating also available for frame and grate

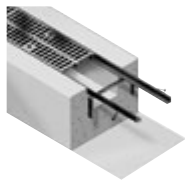
PREFIX	DESCRIPTION	NO. OF GRATES/ ANCHOR STRAPS	PER FOOT
Z*	10' Long Frame with Anchor Studs and Ductile Iron Grate - Class C with Lockdown	6	207.00
GRATE OPTIONS			ADD/FOOT
-BDC	Black Acid Resistant Ductile Grate - Class C		53.00
-BDE	Black Acid Resistant Ductile Grate - Class E		65.00
-BDF	Black Acid Resistant Ductile Grate - Class F		106.00
-DC	Ductile Iron Solid Cover - Class E		52.00
-DGC	Ductile Iron Slotted Grate - Class C		*
-DGE	Ductile Iron Slotted Grate - Class E		30.00
-DGF	Ductile Iron Slotted Grate - Class F		72.00
-GDC	Galvanized Ductile Slotted Grate - Class C		53.00
-GDE	Galvanized Ductile Slotted Grate - Class E		65.00
-GDF	Galvanized Ductile Slotted Grate - Class F		106.00
-GG	Fiberglass Grate - Class A		72.00
-GHPDE	Galvanized Heel-Proof Ductile ADA Grate - Class E		141.00
-HPD	Heel-Proof Ductile Slotted Grate - Class B		37.00
-HPDE	Heel-Proof Ductile ADA Grate - Class E		65.00
-RFGC	Reinforced Galvanized Slotted Grate - Class C		162.00
-RFSC	Reinforced Stainless Steel Slotted Grate - Class C		401.00
-RPGC	Reinforced Galvanized Perforated ADA Grate - Class C		162.00
-RPGRC	Reinforced Galvanized Perforated Reverse Punch Anti-Slip ADA Grate - Class C		162.00
-RPSC	Reinforced Stainless Steel Perforated Grate - Class C		401.00
-RPSRC	Reinforced Stainless Steel Perforated Reverse Punch Anti-Slip ADA Grate - Class C		401.00
-SBG-L	Stainless Steel Bar Grate - Class C		389.00
MISCELLANEOUS OPTIONS			ADD/FOOT
-VP	Vandal-Proof Lockdown Assembly		8.00
 MADE IN THE U.S.A. (HIGHLIGHTED IN GRAY)			
GRATE OPTIONS			ADD/FOOT
-ADA-USA	Meets Americans with Disabilities Act Requirements - Class C		89.00
-BG	Galvanized Ductile Iron Bar Grate - Class D		23.00
‡ -DCG-USA	Ductile Iron Slotted Grate - Class C		84.00
‡ -DGE-USA	Ductile Iron Slotted Grate - Class E		98.00
-FG	Fabricated Galvanized Steel Slotted Grate - Class A		17.00
-FS	Fabricated Stainless Steel Slotted Grate - Class A		141.00
-GADA-USA	Galvanized Ductile ADA Slotted Grate - Class C		103.00
-GDC-USA	Galvanized Ductile Slotted Grate - Class C		98.00
-GDE-USA	Galvanized Ductile Slotted Grate - Class E		122.00
-GHPDE-USA	Galvanized Heel-Proof Ductile ADA Grate - Class E		154.00
-HPDE-USA	Heel-Proof Ductile ADA Grate - Class E		111.00
-PG	Galvanized Perforated Steel Grate - Class A		17.00
-PGR	Galvanized Perforated Reverse Punch ADA Grate - Class A		17.00
-PS	Stainless Steel Perforated ADA Grate - Class A		141.00
-PSR	Stainless Steel Perforated Reverse Punch ADA Grate - Class A		141.00
-SSCD	Reinforced Stainless Steel Solid Cover - Class B		410.00
FRAME OPTIONS			ADD/FOOT
-CBF	Black Acid Resistant Coated Top Frame		37.00
-GFA	Galvanized Heavy Duty Frame		37.00
-SF	Type 304 Stainless Steel Frame		198.00

*Regularly furnished unless otherwise specified.

‡Indicates grate will be shipped unpainted. For an additional charge, Zurn will paint the grates. Please contact your customer service representative for pricing.

For additional product information, please visit www.zurn.com.

Z717 17" WIDE FRAME AND GRATE SYSTEM



Standard Length: 80" (6.67')
Standard Grate Included: DGC†

ENGINEERING SPECIFICATION

Zurn Z717 17" Wide Frame and Grate System. 2" x 2-1/2" x 1/4" angle, 80" long, carbon steel frame assembly. Anchor studs and combination anchor tabs/leveling devices at appropriate locations for embedding into surrounding concrete. Complete with Class C ductile iron slotted grates (-DGC).

NOTES

White acid resistant coating also available for frame and grate

PREFIX	DESCRIPTION	NO. OF GRATES/ ANCHOR STRAPS	PER FOOT
Z*	80" Heavy-Duty Frame with Anchor Studs, Ductile Iron Grate - Class C with Four Stainless Steel Lockdowns and Anchor Tabs	4	213.00

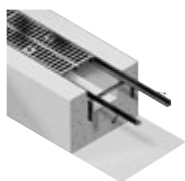
GRATE OPTIONS		ADD/FOOT
-DCC	Ductile Iron Solid Cover - Class C	44.00
-DGC	Ductile Iron Slotted Grate - Class C	*
-DGF	Ductile Iron Slotted Grate - Class F	140.00
-GDC	Galvanized Ductile Iron Grate - Class C	128.00
-GDF	Galvanized Ductile Iron Grate - Class F	254.00
-GG	Fiberglass Grate - Class A	POA
-HPD	Heel-Proof Longitudinal Ductile Iron ADA Grate - Class B	36.00

MISCELLANEOUS OPTIONS		ADD/EACH
-VP	Vandal Resistant	7.00

MADE IN THE U.S.A. (HIGHLIGHTED IN GRAY)

GRATE OPTIONS		ADD/FOOT
‡ -ADA-USA	Meets Americans with Disabilities Act Requirements - Class C	149.00
‡ -DGC-USA	Ductile Iron Slotted Grate - Class C	132.00
‡ -DGF-USA	Ductile Iron Slotted Grate - Class F	206.00
-GADA-USA	Galvanized Ductile ADA Slotted Grate - Class C	202.00
-GDC-USA	Galvanized Ductile Slotted Grate - Class C	185.00
-GDF-USA	Galvanized Ductile Slotted Grate - Class F	319.00
FRAME OPTIONS		ADD/FOOT
-CBF	Black Acid Resistant Coated Frame	52.00
-GFA	Galvanized Frame Assembly	52.00
-SF	Type 304 Stainless Steel Top Frame	304.00

Z723 23" WIDE FRAME AND GRATE SYSTEM



Standard Length: 80" (6.67')
Standard Grate Included: DGC†

ENGINEERING SPECIFICATION

Zurn Z723 23" Wide Frame and Grate System. 2" x 2-1/2" x 1/4" angle, 80" long, carbon steel frame assembly. Anchor studs and combination anchor tabs/leveling devices at appropriate locations for embedding into surrounding concrete. Complete with Class C ductile iron slotted grates (-DGC).

NOTES

White acid resistant coating also available for frame and grate

PREFIX	DESCRIPTION	NO. OF GRATES/ ANCHOR STRAPS	PER FOOT
Z*	80" Heavy-Duty Frame with Anchor Studs, Ductile Iron Grate - Class C with Four Stainless Steel Lockdowns and Anchor Tabs	4	317.00

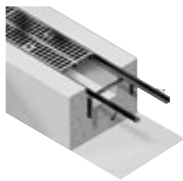
GRATE OPTIONS		ADD/FOOT
-DCC	Ductile Iron Solid Cover - Class C	44.00
-DCF	Ductile Iron Solid Cover - Class F	111.00
-DGC	Ductile Iron Slotted Grate - Class C	*
-DGF	Ductile Iron Slotted Grate - Class F	85.00
-GDC	Galvanized Ductile Iron Grate - Class C	148.00
-GDF	Galvanized Ductile Iron Grate - Class F	230.00
-GG	Fiberglass Grate - Class A	POA
-HPD	Heel-Proof Longitudinal Ductile Iron Grate - Class C	36.00

MISCELLANEOUS OPTIONS		ADD/EACH
-VP	Vandal-Proof Lockdown Assembly	7.00

MADE IN THE U.S.A. (HIGHLIGHTED IN GRAY)

GRATE OPTIONS		ADD/FT
-DGE-USA	Ductile Iron Slotted Grate - Class E	171.00
-GDE-USA	Galvanized Ductile Slotted Grate - Class E	373.00
FRAME OPTIONS		ADD/FT
-CBF	Black Acid Resistant Coated Frame	52.00
-GFA	Galvanized Frame Assembly	52.00
-SF	Type 304 Stainless Steel Top Frame	304.00

Z726 26" WIDE FRAME AND GRATE SYSTEM




Standard Length: 80" (6.67')
Standard Grate Included: DGC†

ENGINEERING SPECIFICATION

Zurn Z726 26" Wide Frame and Grate System. 2" x 2-1/2" x 1/4" angle, 80" long, carbon steel frame assembly. Anchor studs and combination anchor tabs/leveling devices at appropriate locations for embedding into surrounding concrete. Complete with Class C ductile iron slotted grates (-DGC).

NOTES

White acid resistant coating also available for frame and grate

PREFIX	DESCRIPTION	NO. OF GRATES/ ANCHOR STRAPS	PER FOOT
Z*	80" Heavy-Duty Frame with Anchor Studs, Ductile Iron Grate - Class C with Four Stainless Steel Lockdowns and Anchor Tabs	4	390.00
GRATE OPTIONS			ADD/FT
-DCC	Ductile Iron Solid Cover - Class C		44.00
-DGC	Ductile Iron Slotted Grate - Class C		*
-DGF	Ductile Iron Slotted Grate - Class F		140.00
-GDC	Galvanized Ductile Iron Grate - Class C		229.00
-GDF	Galvanized Ductile Iron Grate - Class F		276.00
-HPD	Heel-Proof Longitudinal Ductile Iron Grate - Class C		36.00
MISCELLANEOUS OPTIONS			ADD/EA
-VP	Vandal-Proof Lockdown Assembly		7.00
 MADE IN THE U.S.A. (HIGHLIGHTED IN GRAY)			
GRATE OPTIONS			ADD/FT
-DGE-USA	Ductile Iron Slotted Grate - Class E		207.00
-GDE-USA	Galvanized Ductile Iron Grate - Class E		412.00
FRAME OPTIONS			ADD/FT
-CBF	Black Acid Resistant Coated Frame		52.00
-GFA	Galvanized Frame Assembly		52.00
-SF	Type 304 Stainless Steel Top Frame		304.00

PERMA-TRENCH

FLO-THRU

ALUMINUM TRENCH

SLOT DRAIN/HI-CAP

SANI-FLO

FRAME AND GRATE SYSTEMS

OIL SEPARATORS

*Regularly furnished unless otherwise specified.

†Indicates grate will be shipped unpainted. For an additional charge, Zurn will paint the grates. Please contact your customer service representative for pricing.

Z885 POLYETHYLENE OIL SEPARATOR



ENGINEERING SPECIFICATION

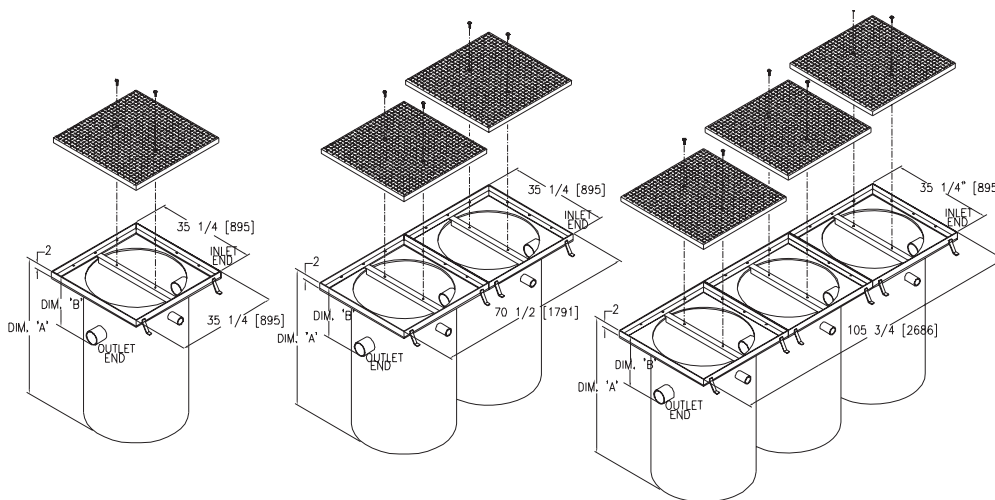
Zurn Z885 Polyethylene Oil Separator. 1/4" thick polyethylene body complete with heavy-duty Dura-Coated steel frame and 1/4" thick steel diamond plate covers with medium-duty top loading classification. Four-inch diameter No-Hub inlet/outlet with 2" diameter No-Hub vent connections. Dimensions shown nominally for reference. Top of grate to center of outlet distance is 8" unless otherwise specified.

NOTES

White acid resistant coating also available for frame and grate

MADE IN THE U.S.A. (HIGHLIGHTED IN GRAY)

PREFIX	DESCRIPTION	MODEL NUMBER	CAPACITY GALLONS	DEPTH	LIST PRICE
Z*	Polyethylene Basin with Medium-Duty Frame and Reinforced Steel Cover	Single Basin			
		Z885-1-30	70	30	4,746.00
		Z885-1-36	100	36	4,840.00
		Z885-1-48	130	48	5,282.00
		Z885-1-60	150	60	6,437.00
		Double Basin			
		Z885-2-30	140	30	8,025.00
		Z885-2-36	200	36	8,217.00
		Z885-2-48	260	48	8,727.00
		Z885-2-60	300	60	9,949.00
		Triple Basin			
		Z885-3-30	210	30	10,975.00
		Z885-3-36	300	36	11,291.00
		Z885-3-48	390	48	12,266.00
		Z885-3-60	450	60	13,761.00
SUFFIX OPTIONS					ADD/EACH
- HD	Heavy-Duty Cover	Single Basin Model			298.00
		Double Basin Model			594.00
		Triple Basin Model			890.00



A Depth	B = Invert Dimensions						
	8"	10"	12"	14"	16"	18"	20"
	Gallons						
Single Basin Model							
30"	70	65	N/A	N/A	N/A	N/A	N/A
36"	100	93	84	78	72	N/A	N/A
48"	130	124	118	112	106	100	94
60"	150	143	138	132	128	122	116
Double Basin Model							
30"	140	130	N/A	N/A	N/A	N/A	N/A
36"	200	186	168	156	144	N/A	N/A
48"	261	248	236	224	212	200	187
60"	300	286	276	264	256	244	232
Triple Basin Model							
30"	210	195	N/A	N/A	N/A	N/A	N/A
36"	300	279	252	234	216	N/A	N/A
48"	391	373	354	336	318	299	281
60"	450	429	414	396	384	366	348

For additional product information, please visit www.zurn.com.

*Regularly furnished unless otherwise specified.

ALPHANUMERIC INDEX

GENERAL TERMS AND CONDITIONS	36	Z874-U-XX-LDRS LIGHT-DUTY UTILITY TRENCH WITH ALUMINUM FRAME AND CLAMP WITH SOLID STEEL COVER	8	Z891 STAINLESS STEEL SLOTTED DRAINAGE SYSTEM	26
Z706 6" WIDE FRAME AND GRATE SYSTEM	28	Z880 2-1/2" WIDE TRENCH DRAIN SYSTEM	9	Z895 12" STAINLESS STEEL TRENCH DRAIN SYSTEM	25
Z712 12" WIDE FRAME AND GRATE SYSTEM	29	Z882 12" WIDE TRENCH DRAIN SYSTEM	4	Z897 STAINLESS STEEL CATCH BASIN	27
Z717 17" WIDE FRAME AND GRATE SYSTEM	30	Z883 6" WIDE SHALLOW TRENCH DRAIN SYSTEM	10	Z899 ELEVATOR TRENCH DRAIN SYSTEM	26
Z723 23" WIDE FRAME AND GRATE SYSTEM	30	Z884 4-3/4" WIDE SHALLOW DRAIN SYSTEM	9	ZA880-156 EXTRUDED ALUMINUM TRENCH DRAIN SYSTEM	22
Z726 26" WIDE FRAME AND GRATE SYSTEM	31	Z885 POLYETHYLENE OIL SEPARATOR	32	ZA880-300A EXTRUDED ALUMINUM TRENCH DRAIN SYSTEM (PRICING WITHOUT GRATE)	22
Z806 6" WIDE TRENCH DRAIN SYSTEM	12	Z886 6" WIDE TRENCH DRAIN SYSTEM	2	ZA880-300B EXTRUDED ALUMINUM TRENCH DRAIN SYSTEM (PRICING WITHOUT GRATE)	22
Z812 12" WIDE TRENCH DRAIN SYSTEM	14	Z887 CATCH BASIN	11	ZA880-340 EXTRUDED ALUMINUM TRENCH DRAIN SYSTEM (PRICING WITHOUT GRATE)	22
Z817 CATCH BASIN	15	Z888-4 SLOTTED DRAINAGE SYSTEM	20	ZF806 6" WIDE TRENCH DRAIN SYSTEM	16
Z874-12 TRENCH DRAIN SYSTEM	5	Z888-6 SLOTTED DRAINAGE SYSTEM	20	ZF812 12" WIDE TRENCH DRAIN SYSTEM	18
Z874-18 TRENCH DRAIN SYSTEM	6	Z888-8 SLOTTED DRAINAGE SYSTEM	20	ZF817 CATCH BASIN	19
Z874-21 TRENCH DRAIN SYSTEM	7	Z888-12,-18,-36 HIGH CAPACITY TRENCH DRAIN SYSTEM SLOTTED DRAINAGE SYSTEM	21	ZS880 STAINLESS STEEL LINEAR SHOWER DRAIN	23
Z874-U-XX-HD HEAVY-DUTY UTILITY TRENCH WITH STEEL FRAME AND DUCTILE IRON SOLID COVER	8	Z889-12,-18,-36 HIGH CAPACITY CLEANOUT PORT	21		
Z874-U-XX-LDRA LIGHT-DUTY UTILITY TRENCH WITH ALUMINUM FRAME, CLAMP, AND SOLID COVER	8	Z890 6" STAINLESS STEEL TRENCH DRAIN SYSTEM	24		

NOTES

NOTES

NOTES

GENERAL TERMS AND CONDITIONS

PRICE AND TERMS OF PAYMENT

Terms are net, payable 30 days from date of invoice. All pricing in U.S. currency. The Buyer shall pay all sales, consumers, or other applicable taxes. A 1-1/2% monthly (18% annual) service charge will be added to the outstanding balance of all past due invoices.

Minimum invoice \$100.00. Zurn Industries, LLC ("Zurn") reserves the right to apply a minimum order charge in order to meet the \$100.00 minimum invoice requirement. All orders are subject to credit approval by the Zurn Credit Department prior to the acceptance of an order. Orders may be refused, delivery may be withheld, or shipment stopped in transit without any liability on Zurn's part at Zurn's sole discretion based upon Buyer's credit worthiness as determined by Zurn.

FREIGHT

Zurn is pleased to provide an industry-leading \$3,500 combined freight rate. Please see below for specific policy details.

All sales are F.O.B. seller's location. Zurn will allow full freight allowance when any of the following conditions are met: 1) any combination of Specification Drainage, Light Commercial, Commercial Brass or Wilkins orders of \$3,500 or more; 2) Linear Drainage and Chemical Drainage orders of \$5,000 or more; 3) any Combination of Specification Drainage, Light Commercial, Commercial Brass, Wilkins, Linear Drainage and Chemical Drainage orders of \$5,000 or more; 4) Zurn One Systems orders of \$7,500 or more; 5) fixture only orders totaling \$10,000 or more. This full freight allowance applies when the shipment is within the continental United States and has a single destination of a buyer's standard address or job location. Routing of shipment shall be determined at the sole direction of Zurn. Shipping dates are estimates and time of delivery shall not be of the essence of this sale contract. Under no circumstances will the Seller have any responsibility on account of any delays in manufacture, transportation, or otherwise. Terms of Export Shipment on application.

NOTE: Any product dimension larger than 92. or any single item weighing more than 3,500 lbs., shall be defined as an oversized and/or overweight product and Zurn's standard FFA terms may not apply. Please contact our customer service department for guidance on potential additional shipping charges.

These charges and restrictions apply in addition to Zurn standard terms and conditions for sale unless otherwise agreed upon by the parties.

LIMITED WARRANTY

Zurn goods sold hereunder are warranted to be free from defects in material and factory workmanship for the period of time from the date of purchase: AquaVantage® Flush Valves, AquaFlush® Flush Valves, Commercial Fixtures, Faucets, Showers, and Tubular Brass: three years; Chemical Drainage, Linear Drainage, Light Commercial, Specification Drainage, Zurn Wilkins, and Flush Valve and Tubular Brass decorative finishes: one year, PHIX® Cartridge ten years, FOG-ceptor™: thirty years. Where permitted by law, **THE IMPLIED WARRANTY OF MERCHANTABILITY IS LIMITED TO THE ABOVE IDENTIFIED PERIOD OF TIME AND SHALL BE LIMITED SOLELY TO THE REPLACEMENT OF THE DEFECTIVE GOODS.** A damaged/broken test cock or ball valve is not considered defective. Please contact Zurn Customer Care for assistance.

Zurn will replace goods at no cost that prove defective provided Zurn is notified in writing of such defect and the goods are returned prepaid at the specified Zurn location with evidence that they have been properly maintained and used in accordance with instructions. **ZURN SHALL NOT BE RESPONSIBLE FOR ANY LABOR CHARGES OR ANY LOSS, INJURY, OR DAMAGES WHATSOEVER, INCLUDING, BUT NOT LIMITED TO, INCIDENTAL OR CONSEQUENTIAL DAMAGES.** The sole and exclusive remedy shall be limited to the replacement of the defective goods. Before installation and use, the purchaser shall determine the suitability of the product for his intended use and the purchaser assumes all risk and liability whatever in the connection therewith. All weights stated in Zurn catalogs and lists are approximate and are not guaranteed.

RETURNED GOODS

Standard cataloged material may be returned only with written permission of Zurn. Returned goods are subject to a 25% restocking charge of total saleable material returned, plus cost of reconditioning, if necessary, to make material sellable. Transportation charges are the responsibility of the Buyer. Credit allowance will be in the form of merchandise credit only – not cash credit. The value of the return must total at least \$100.00 to qualify for credit allowance. No credit will be allowed for parts unless originally ordered and invoiced as parts. No credit will be allowed for discontinued or made-to-order items. Items that have been specially made are not subject to return or cancellation except by special negotiation. Material must be returned within one year of invoice date for credit to be issued for Chemical Drainage, Linear Drainage, and Light Commercial. Material must be returned within two years of invoice date for credit to be issued for Commercial Fixtures, Flush Valve Products, Specification Drainage, Tubular Brass, and Zurn Wilkins. No credit is allowed for Linear Drainage products that have been cut and Specification Drainage product with auxiliary tappings. Flush Valve material over two years old will be subject to a 50% handling charge. Flush Valve material over five years old will not be accepted. Light Commercial and Specification Drainage galvanized material will be credited at value of Dura-Coated cast iron, and chrome plated at value of bronze. Zurn Wilkins damaged/broken test cocks or ball valves are not considered defective.

ILLUSTRATIONS OF TYPICAL INSTALLATIONS

The typical installations for various products found in each product section are intended to illustrate the products and potential options for the use of these products. Under no circumstances are they to be construed as recommended installation procedures. Consult local codes and project specifications for proper installation instructions.

SHORTAGE/DAMAGE CLAIMS

Notification of material shortages or incorrect filling of orders must be made to Zurn within 10 days of receipt. No claims over three months old will be honored. Buyer agrees to make all complaints for damage in transit or "short count" directly to the carrier; before the contents are unloaded have the carrier agent's acknowledgment of such damage noted on the bill of lading and to present to the carrier its agent's acknowledgment of such damaged material with formal claim covering said damage.

GENERAL

Zurn reserves the right to make changes in design or equipment of any item or product without incurring any obligation on previously sold items, and to discontinue items at any time, without notice. Possession of this Catalog or other sales literature is not to be construed as an offer to sell. All orders are subject to acceptance by Zurn. Catalog printed in U.S.A.

Zurn flush valves are designed to comply with Army Corp of Engineers and Naval guide specifications, Military Specification MIL.V.29193 and Federal Specification WWP541.

Zurn flush valves comply with the following standards: ASME A112.18.1/CSA B125.1, A112.19.5, A112.19.2, A112.19.6, ASSE 1037 and 101 are listed by the following agencies: Canadian Standards, IAPMO/UPC/CUPC, and CSA 125.3. Zurn flush valves are manufactured from dezincification resistant alloys. For additional compliances, contact Zurn Industries, LLC, Commercial Brass Operation, or 1-800-997-3876.

Zurn is not responsible for typographical errors. The contents of this guide are subject to revision without notice.

© 2017 Zurn Industries, LLC Items in this Guide are covered by Patents and Patents Pending. Registered Trademarks.

Zurn Industries, LLC

511 West Freshwater Way
Milwaukee, WI 53204

Zurn Industries, LLC Specification Drainage Operation

1801 Pittsburgh Avenue
Erie, PA 16502, 855-663-9876

In Canada

Zurn Industries Limited

7900 Goreway Drive, Unit 10
Brampton, ON L6T 5W6, 905-405-8272

[1.855.ONE.ZURN](tel:1855ONEZURN) | ZURN.COM

