



## Omni-Flo™ Urinal

Z5755-U and Z5765-U

The Zurn Omni-Flo™ Urinal is designed with the end user in mind. An innovative, asymmetric back wall minimizes splash back while providing sleek, modern aesthetics. This new design will accommodate multiple flow rates of 0.125 gpf to 1.0 gpf, making it an excellent choice for new construction and retrofit applications.

### Features and Benefits

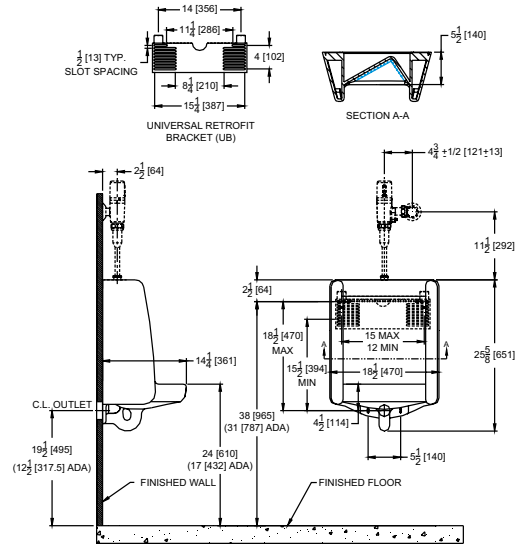
- Accommodates multiple flow rates for reduced inventory carrying cost
- Innovative asymmetric back wall designed to minimize splash back
- Paired performance with our flush valves for consistent and reliable flushing action
- Standard footprint for new construction and retrofit applications
- Universal retrofit bracket for easy installation



855-ONE-ZURN  
zurn.com



# Z5755-U Top Spud and Z5765-U Back Spud Omni-Flo™ Urinal



## Engineering Specifications:

Z5755 Omni-Flo™ Urinal 0.125 gpf to 1.0 gpf vitreous china, wall hung, integral trap, washout urinal complete with 3/4" top spud connection, concealed universal retrofit wall bracket, 2" outlet connection and vandal-resistant outlet strainer.

Fixture dimensions meet ANSI/ASME standard A112.19.2 and CAN/CSA B45 requirements.

Meets the American Disabilities Guidelines and ANSI A117.1 requirements when urinal is installed 432mm (17") from finished floor.

## Additional Features:

- Vitreous china
- Optional back spud design (Z5765-U)
- Patent-pending design
- High-efficiency washout flushing action
- 3/4" top or back spud
- Reduced water consumption by 88% when using our ultra low flow valves
- 2" I.P.S. outlet flange and rubber gasket with integral trap
- 14" extended rim for handicap compliance when installed at proper height
- Vandal-resistant outlet strainer included
- 3-year warranty

## Recommended Product Bundles:

- **Ultra Low Flow Flush Valves 0.125 gpf [0.5 Lpf]**  
ZTR6203-ULF-LL, ZER6003AV-ULF-CPM, ZEMS6003AV-ULF-IS, Z6003AV-ULF
- **Low Flow Flush Valves 0.5 gpf [1.9 Lpf]**  
ZTR6203-EWS-LL, ZER6003AV-EWS-CPM, ZEMS6003AV-EWS-IS, Z6003AV-EWS
- **Standard Flow Flush Valves 1.0 gpf [3.8 Lpf]**  
ZTR6203-WS1-LL, ZER6003AV-WS1-CPM, ZEMS6003AV-WS1-IS, Z6003AV-WS1
- **Plate Type Urinal Carrier System**  
Z1221, Z1222



ZTR6203



ZER6003



ZEMS6003



Z6003



Z1221



Z1222

**ZURN INDUSTRIES, LLC** COMMERCIAL BRASS OPERATION  
5900 ELWIN BUCHANAN DRIVE, SANFORD NC 27330, 855-663-9876

In Canada: **ZURN INDUSTRIES LIMITED**  
3544 NASHUA DRIVE, MISSISSAUGA, ONTARIO L4V 1L2, 905-405-8272