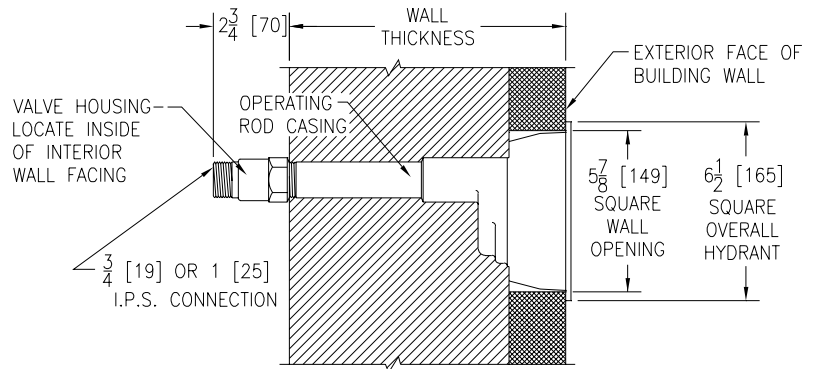


TYPICAL INSTALLATIONS

ECOLOtrol WALL HYDRANT

**Encased, Non-Freeze
Z1300**

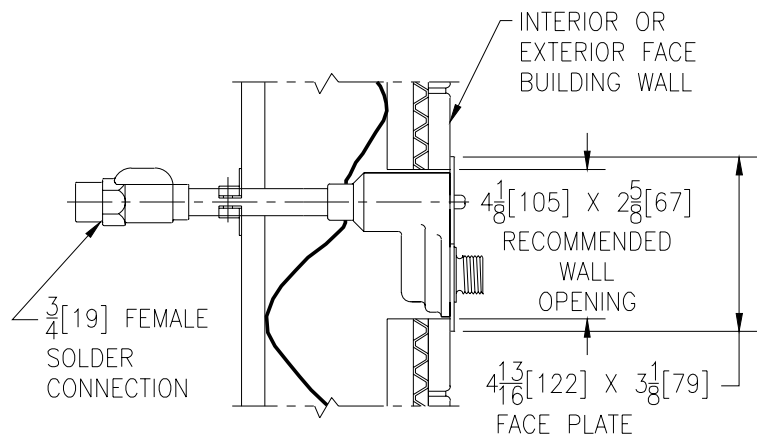
Zurn Z1300 Ecolotrol wall hydrants provide a flush, fully enclosed, fully protected installation in any type wall construction. Hinged box cover can be locked to prevent vandalism. The same key that unlocks cover operates hydrant. Amply wide flange of box extends over wall opening and provides neat, flush installation for modern building facades.



ECOLOtrol WALL HYDRANT WITH CERAMIC DISC

**Exposed, Non-Freeze, Automatic Draining, Anti-Siphon
Z1321**

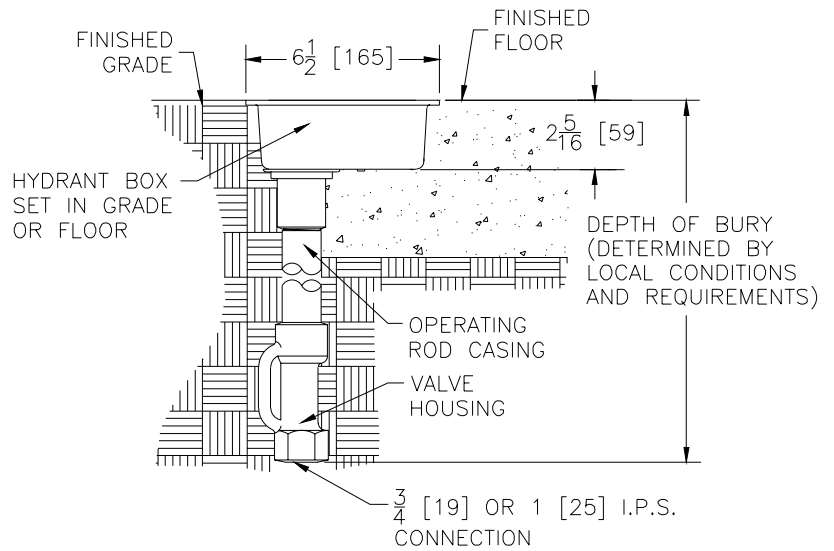
Use Z1321 hydrant where the added security of a box hydrant is not required. Optional wall clamp shown to anchor hydrant in wall. Stainless steel face provides for flush installation and years of non-corroded appearance.



TYPICAL INSTALLATIONS

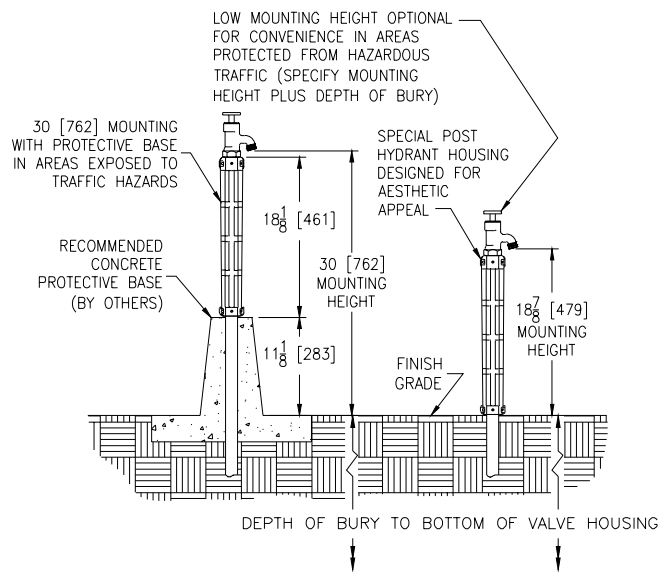
**ENCASED GROUND HYDRANT
Non-Freeze, Flush with Surface
Z1360**

Zurn Z1360 box hydrants provide free flowing water supply at any temperature in any type of commercial, recreational, industrial, or residential installation. Removable key opens surface level cover and also operates hydrant. Non-freezing, vandal-proof design assures year-round convenience. Also designed with siphon-resistant drain port that is tapped 1/4" IP for drain piping connection by others.



**POST HYDRANT
Non-Freeze, Exposed
Z1385**

Zurn Z1385 post hydrants feature a unique housing designed for aesthetic appeal. Siphon resistant drain port prevents sub-surface water contamination from entering hydrant. Upward movement of the washer guide when the hydrant is turned on, positions O-rings to seal off drain port. When hydrant is turned off, the washer guide moves down, clearing drain port to permit complete drainage of water from the hydrant. Drain port is tapped 1/4" IP for drain piping connection by others.



NOTE: For ground, post, and yard hydrant installations that involve the use of a drain port, it is recommended that gravel be placed around the drain port to allow a flow path for the drained water to evacuate.