



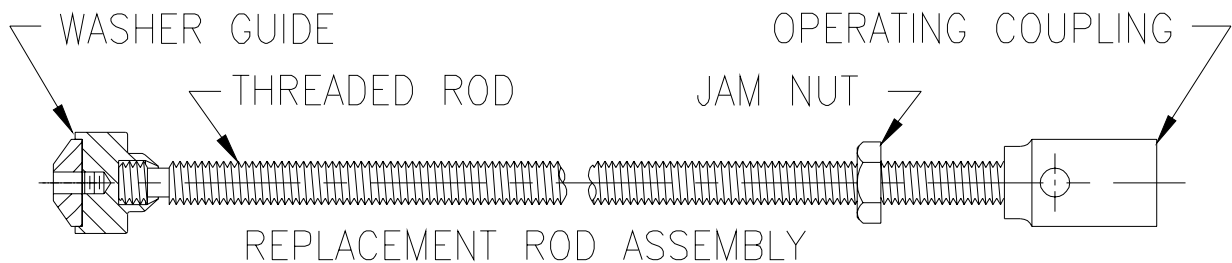
INSTRUCTIONS
FOR REPLACING FACTORY ROD ASSEMBLY
WITH
FIELD REPLACEMENT ROD ASSEMBLY

This kit contains a field replacement rod assembly.

The rod **MUST BE CUT TO LENGTH TO SUIT THE HYDRANT.**

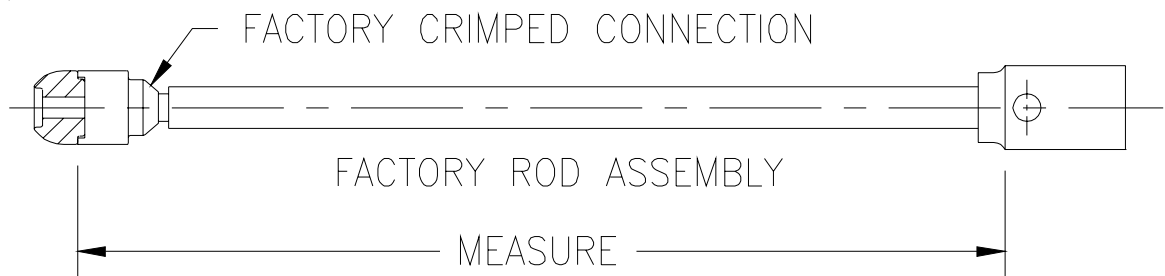
A) THE FIELD REPLACEMENT ROD ASSEMBLY HAS THREE DIFFERENCES FROM THE FACTORY ROD ASSEMBLY:

- A1) The rod itself is a continuously threaded rod rather than a smooth rod.
- A2) A Brass jam nut will be used to lock the operating coupling in position.
- A3) The replacement rod assembly is longer than the factory assembly.



B) CUTTING THE FIELD REPLACEMENT ROD TO LENGTH:

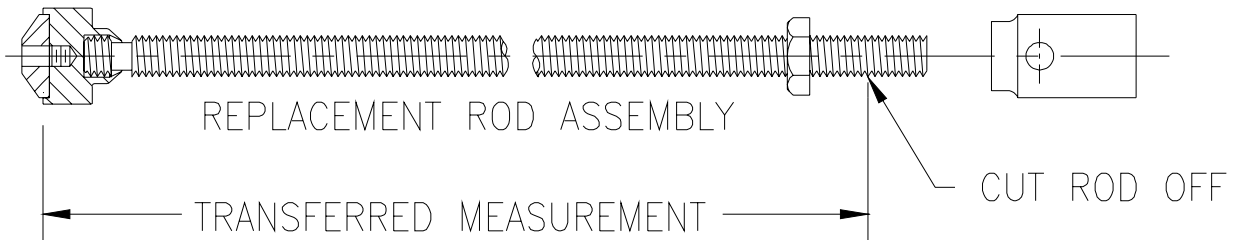
- B1) Unscrew the operating coupling from the threaded rod on the replacement rod assembly.
- B2) Measure the factory rod assembly from the end of the washer guide (DO NOT INCLUDE WASHER) to the first square edge of the operating coupling as shown.



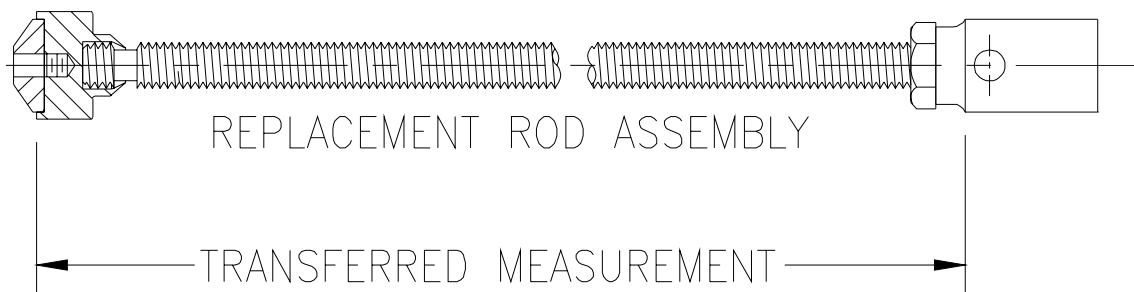


INSTRUCTIONS
FOR REPLACING FACTORY ROD ASSEMBLY
WITH
FIELD REPLACEMENT ROD ASSEMBLY

- B3) Transfer this measurement to the replacement rod assembly (WITH OPERATING COUPLING UNSCREWED) as shown, and cut threaded rod off at this point.



- B4) Reassemble the operating coupling onto the threaded rod. Screw the coupling onto the rod a few turns as required to obtain the transferred measurement. Run the jam nut up against the coupling and securely tighten against coupling.



C) REASSEMBLE ROD ASSEMBLY INTO HYDRANT.

NOTE: IF HYDRANT REPAIR KIT IS ALSO PROVIDED, REPLACE ALL PARTS IN HYDRANT WHICH ARE PROVIDED IN KIT. REASSEMBLE HYDRANT.