



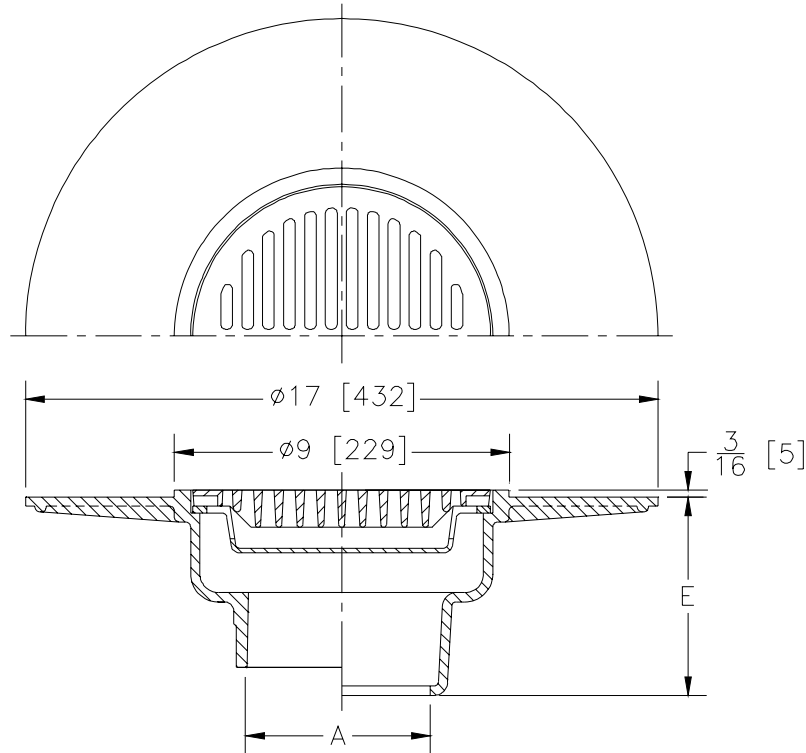
Z530

9 [229] MEDIUM-DUTY WIDE FLANGE DECK DRAIN

SPECIFICATION SHEET

TAG _____

Dimensional Data (inches and [mm]) are Subject to Manufacturing Tolerances and Change Without Notice



A- Pipe Size In.	Approx. Wt. Lbs. [kg]	Grate Open Area Sq. In. [cm ²]
2-3-4 [51-76-102]	49 [22]	18 [116]

ENGINEERING SPECIFICATION: ZURN Z530

9 [229] Diameter wide flange deck drain for latex decks, Dura-Coated cast iron body with latex troweling flange, flat medium-duty grate and suspended sediment bucket.

OPTIONS (Check/specify appropriate options)

PIPE SIZE

(Specify size/type) **OUTLET**

'E' BODY HT. DIM.

- 2 thru 4 [51 thru 102]
- 2 thru 4 [51 thru 102]
- 2 thru 4 [51 thru 102]
- 2 thru 4 [51 thru 102]

- ___ IC Inside Caulk
- ___ IG Inside Gasket
- ___ IP Threaded
- ___ NL Neo-Loc

- 5-1/2 [140]
- 5-1/2 [140]
- 4 [102]
- 4-3/4 [121]

PREFIXES

- ___ Z D.C.C.I. Body and Top*
- ___ ZB D.C.C.I. Body with Polished Bronze Top
- ___ ZN D.C.C.I. Body with Polished Nickel Bronze Top

SUFFIXES

- | | |
|--|---|
| <ul style="list-style-type: none"> ___ -AR Acid Resisting Epoxy Coated Cast Iron ___ -C Underdeck Clamp ___ -D Dome Grate ___ -DG Duresist Grate ___ -G Galvanized Cast Iron ___ -LY (Less) Sediment Bucket ___ -SC Solid Cover | <ul style="list-style-type: none"> ___ -TC Neo-Loc Test Cap Gasket
(2 [51]-4 [102] NL Bottom Outlet Only) ___ -TS Top Secured with Slotted Screws ___ -VP Vandal Proof Secured Top ___ -XJ Expansion Joint (See Z190) |
|--|---|

*REGULARLY FURNISHED UNLESS OTHERWISE SPECIFIED

REV. E	DATE: 11/16/10	C.N. NO. 120450
DWG. NO. 58935		PRODUCT NO. Z530