

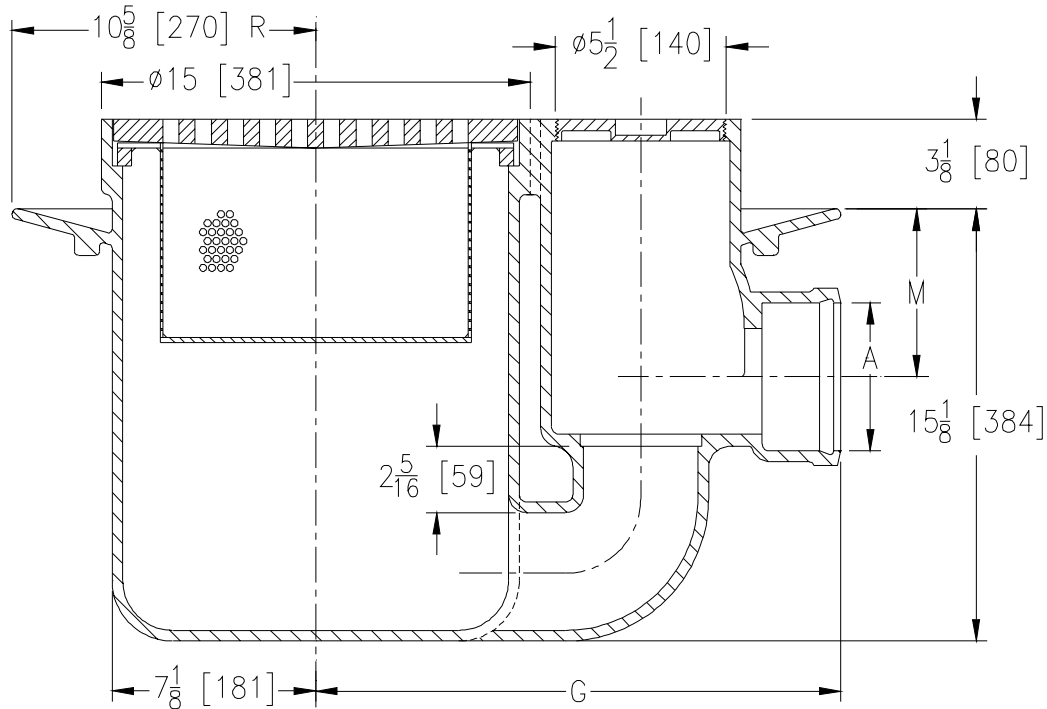


Z548

15 [381] DIAMETER HEAVY-DUTY DRAIN WITH INTEGRAL TRAP & CLEANOUT

TAG _____

Dimensional Data (inches and [mm]) are Subject to Manufacturing Tolerances and Change Without Notice



Dimensions In Inches			Approx. Wt. Lbs. [kg]	Grate Open Area Sq. In. [cm ²]
A - Pipe Size	G	M		
3 [76]	18 [457]	6 1/2 [165]	209 [95]	45 [290]
4 [102]	18 1/8 [460]	6 [152]		

ENGINEERING SPECIFICATION: ZURN Z548

15 [381] Diameter top drain, Dura-Coated body with integral double wall trap, side outlet with seepage pan and heavy-duty cast iron slotted grate complete with suspended sediment bucket and plain bronze floor level cleanout.

OPTIONS (Check/specify appropriate options)

PIPE SIZE

3, 4 [76, 102]

(Specify size/type) **OUTLET**

_____ HB Hub

PREFIXES

- _____ Z Body and D.C.C.I. Top*
- _____ ZB Body with Polished Bronze Top (Add 3/16 [5] to 3 [76] Dim.)
- _____ ZN Body with Polished Nickel Bronze Top (Add 3/16 [5] to 3 [76] Dim.)

SUFFIXES

- _____ -AR Acid Resisting Epoxy Coated Finish
- _____ -C Underdeck Clamp
- _____ -DG Duresist Grate
- _____ -G Galvanized Cast Iron
- _____ -TS Top Secured with Slotted Screws
- _____ -V Backwater Valve
- _____ -VP Vandal-Proof Secured Top
- _____ -YA Aluminum Sediment Bucket

REV. C	DATE: 05/18/04	C.N. NO. 92226
DWG. NO. 58946	PRODUCT NO. Z548	

*REGULARLY FURNISHED UNLESS OTHERWISE SPECIFIED