



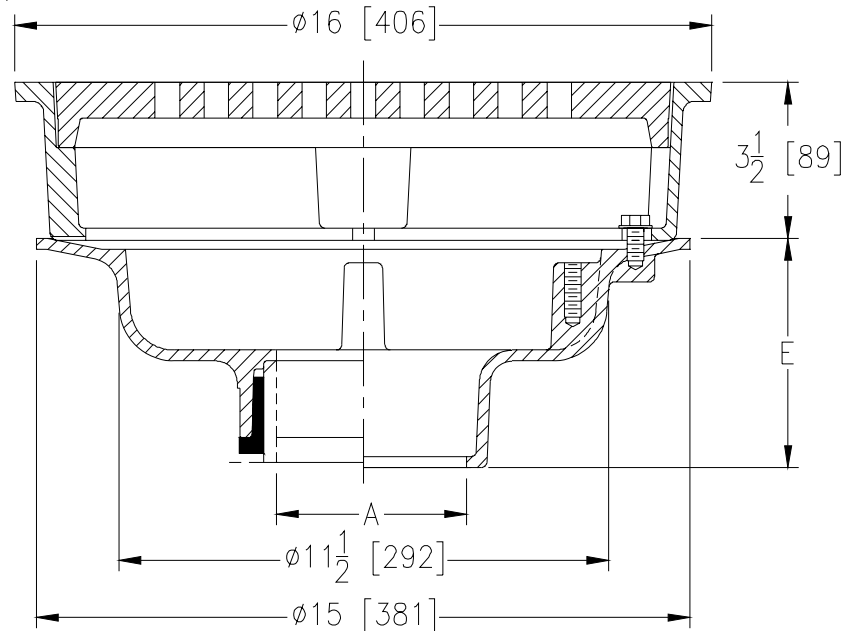
# Z545

SPECIFICATION SHEET

## 16 [406] DIAMETER HEAVY DUTY DRAIN

TAG \_\_\_\_\_

Dimensional Data (inches and [ mm ]) are Subject to Manufacturing Tolerances and Change Without Notice



A Pipe Size	Approx. Wt. Lbs. [kg]	Grate Open Area Sq. In. [cm <sup>2</sup> ]
2-3-4-5-6 [51-76-102-127-152]	69 [31]	45 [290]
8 [203]	71 [32]	
10 [254]	70 [32]	

**ENGINEERING SPECIFICATION: ZURN Z545**

16 [406] Diameter top drain, Dura-Coated cast iron body with bottom outlet, seepage pan and combination membrane flashing clamp and frame for heavy-duty cast iron slotted grate.

**OPTIONS** (Check/specify appropriate options)

**PIPE SIZE**

- 2 thru 6-8-10 [51 thru 152-203-254]
- 2-3-4-6 [51-76-102-152]
- 2 thru 6-8-10 [51 thru 152-203-254]
- 2 thru 6-8-10 [51 thru 152-203-254]
- 2 thru 4 [51 thru 102]

(Specify size/type) **OUTLET**

- \_\_\_ IC Inside Caulk
- \_\_\_ IG Inside Gasket
- \_\_\_ IP Threaded
- \_\_\_ NH No-Hub
- \_\_\_ NL Neo-Loc

**'E' BODY HT. DIM.**

- 5-1/4 [133]
- 5-1/4 [133]
- 3-3/4 [95]
- 5-1/4 [133]
- 4-5/8 [117]

**PREFIXES**

- \_\_\_ Z D.C.C.I. Body and Top\*
- \_\_\_ ZB D.C.C.I. Body with Polished Bronze Top (Add 3/16 [5] to 3-1/2 [89] Dim.)
- \_\_\_ ZN D.C.C.I. Body with Polished Nickel Bronze Top (Add 3/16 [5] to 3-1/2 [89] Dim.)

**SUFFIXES**

- \_\_\_ -DG Duresist Grate
- \_\_\_ -G Galvanized Cast Iron
- \_\_\_ -SA Stabilizer Assembly (See Z1036)
- \_\_\_ -TC Neo-Loc Test Cap Gasket (2-4 [51-102] NL Bottom Outlet Only)
- \_\_\_ -VP Vandal-Proof Secured Top
- \_\_\_ -90 90° Threaded Side Outlet (2-6 [51-152])

REV. F	DATE: 11/17/10	C.N. NO. 120474
DWG. NO. 59235	PRODUCT NO. Z545	

\*REGULARLY FURNISHED UNLESS OTHERWISE SPECIFIED