

ZURN WILKINS BACKFLOW Dual Check Valve

INSTALLATION & MAINTENANCE MODEL 700

INSTALLATION INSTRUCTIONS

- Installation of backflow prevention valves must be by a licensed plumber
- Commissioning and testing of devices must only be performed by a qualified, licensed tester

The licenced installer of this valve should ensure that this backflow prevention valve is suitable for the intended installation and complies with the requirements of A.S. 3500. 1 Section 4.

- This valve is designed for use on water lines where a cross-connection could result in pollution of potable water. If a health hazard could result from a cross-connection, use a ZURN WILKINS Model 375XL Reduced Pressure Principle Backflow Preventer.
- Proper performance is dependent upon following these installation instructions and prevailing governmental and industry standards and codes. Failure to do so, according to ZURN WILKINS Limited Warranty "...releases ZURN WILKINS of any liability that it might otherwise have with respect to that device." Such failure could also result in an improperly functioning device.
- If unsure of the correct valve for the application required, contact the LWG Zurn office in your state.

1. Before installation, flush the line thoroughly to remove all foreign matter from the line. If required, a strainer should be placed upstream of the Model 700 to prevent fouling of the checks.
2. The ZURN WILKINS Model 700 is not position sensitive. It may be installed horizontally or vertically.
3. Install the Model 700 in a location that will be easy to reach for future maintenance.
4. Use caution when soldering near valve. Remove check assemblies if excessive heat will be applied to valve.
5. The Model 700 must be protected from freezing.
6. Do not install the Model 700 where it will be subjected to pressure greater than 1200kPa or temperature greater than 82° C.

MAINTENANCE

Servicing the Model 700 involves replacing the check assemblies.

1. Turn off inlet water supply.
2. Loosen union nut.
3. Remove Model 700 from the line.
4. Note the direction of check assemblies and o-ring locations. Push check assemblies out of valve.
5. Clean inside of valve body.
6. Replace parts in reverse order of removal. Make sure check assemblies are installed in correct direction.
7. Reinstall valve and turn on water.

STANDARDS COMPLIANCE

- Australian Watermark (AS/NZS 2845.1)
Approved Lic. 1379

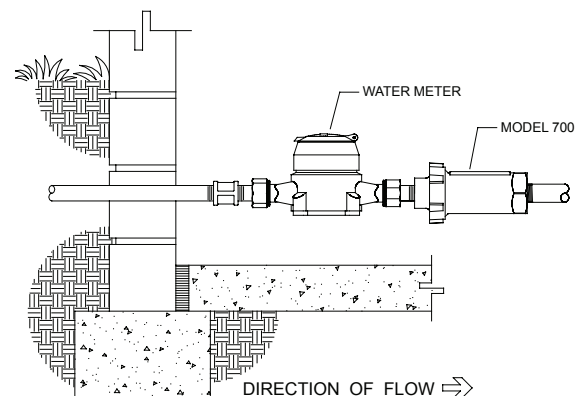


PERFORMANCE

MODEL 310 FEATURES

Max. Working Water Pressure	1200kPa
Max. Working Temperature	82 Celsius

INSTALLATION

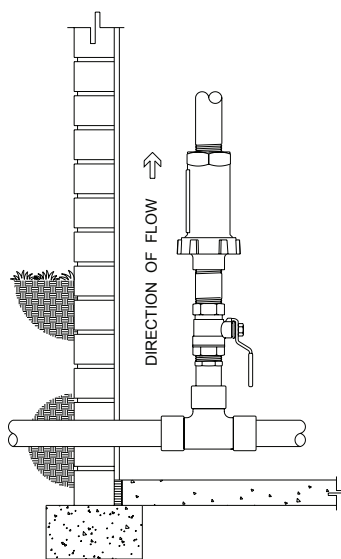


INDOOR INSTALLATION

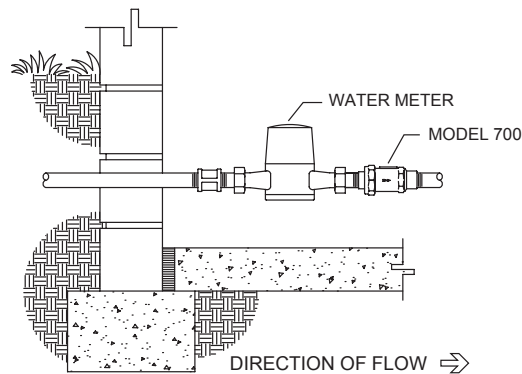
WARRANTY: ZURN WILKINS Valves are guaranteed against defects of material or workmanship when used for the services recommended. Please refer to the LWG Zurn/ Zurn Wilkins Product Warranty Statement for details.

INSTALLATION & MAINTENANCE MODEL 700

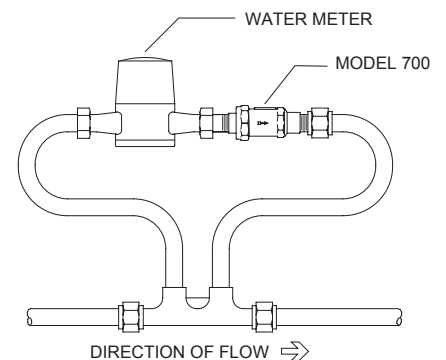
INSTALLATION



VERTICAL INSTALLATION

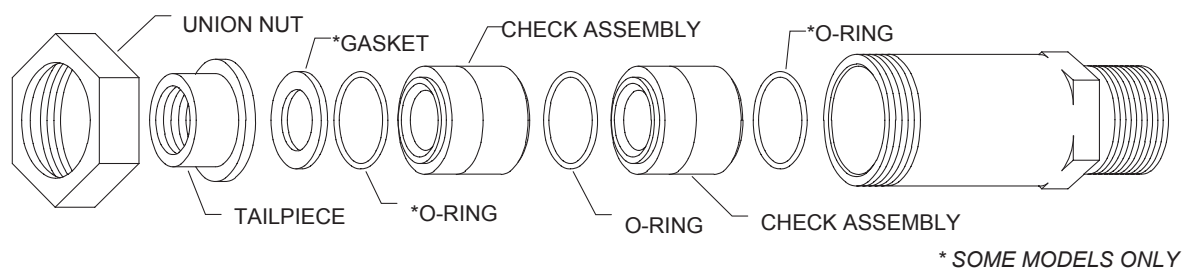


RESIDENTIAL INSTALLATION

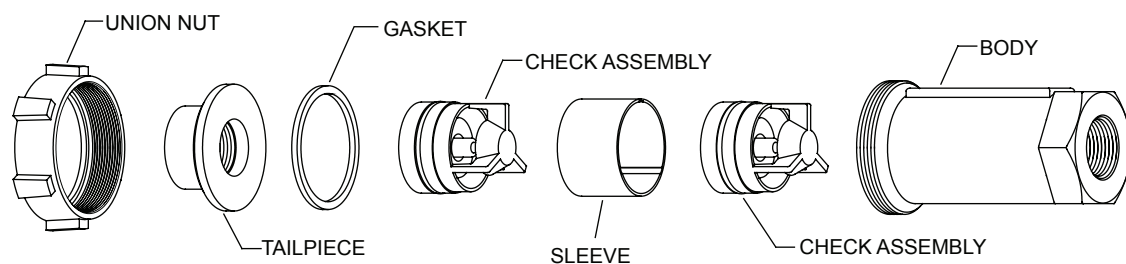


METER SETTER INSTALLATION

MODEL 700 15mm, 20mm, 25mm



MODEL 700 32mm, 40mm



WARRANTY: ZURN WILKINS Valves are guaranteed against defects of material or workmanship when used for the services recommended. Please refer to the LWG Zurn/ Zurn Wilkins Product Warranty Statement for details.