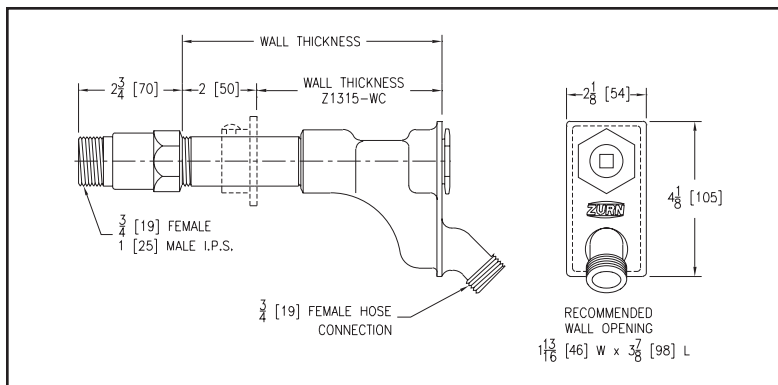
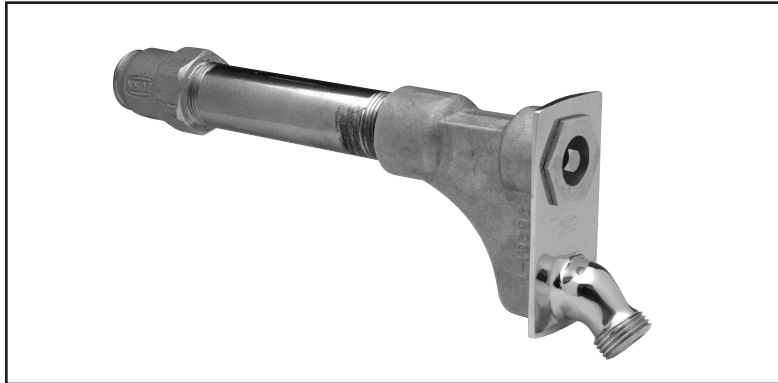


## Z1315 WALL HYDRANT – Exposed, Non-Freeze



**ENGINEERING SPECIFICATION:** ZURN Z1315 Exposed, non-freeze wall hydrant with bronze casing, all bronze interior parts, non-turning operating rod with free-floating compression closure valve, replaceable bronze seat and seat washer, and combination 3/4" [19 mm] female or 1" [25 mm] male straight IP inlet. Complete with operating key.

Wall Thickness Inches [mm]	4" [102]	6" [152]	8" [203]	10" [254]	12" [305]	14" [356]	16" [406]	18" [457]	20" [508]	22" [559]	24" [610]
Overall Length* Inches [mm]	6 1/4" [171]	8 3/4" [222]	10 3/4" [273]	12 3/4" [324]	14 3/4" [375]	16 3/4" [425]	18 3/4" [476]	20 3/4" [527]	22 3/4" [578]	24 3/4" [629]	26 3/4" [679]
Approx. Weight Lbs. [Kg]	6 [3]	6 [3]	6 [3]	8 [4]	8 [4]	8 [4]	10 [5]	10 [5]	12 [5]	12 [5]	12 [5]

\*3/4" [19 mm] female and 1" [25 mm] male IPS connections.

### Z1315 Wall Hydrant

The Z1315 is an exposed, non-freeze wall hydrant designed for commercial applications such as apartments, office buildings, institutions, hospitals, malls and retail outlets, and schools.

#### Hydrant Features

- **Certification** – IAPMO® listed.



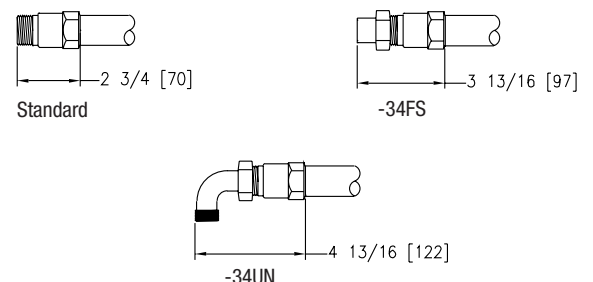
- **Valve Seat** – Removable bronze valve seat with circular seating surface.
- **Valve** – One-piece assembly, replaceable, free-floating compression closure valve plunger operates the water flow with a maximum of three (3) turns. No adjustments are necessary.
- **Casing** – Threaded brass pipe nipple.
- **Operating Screw** – Brass operating screw secured with locknut.
- **Operating Rod** – 3/8" [10 mm] solid brass.
- **Operating Pressures** – Minimum running pressure 8 psi. Maximum static pressure 125 psi.
- **Temperature Range** – Minimum 33°F. Maximum 130°F.

### OPTIONS

#### SUFFIXES

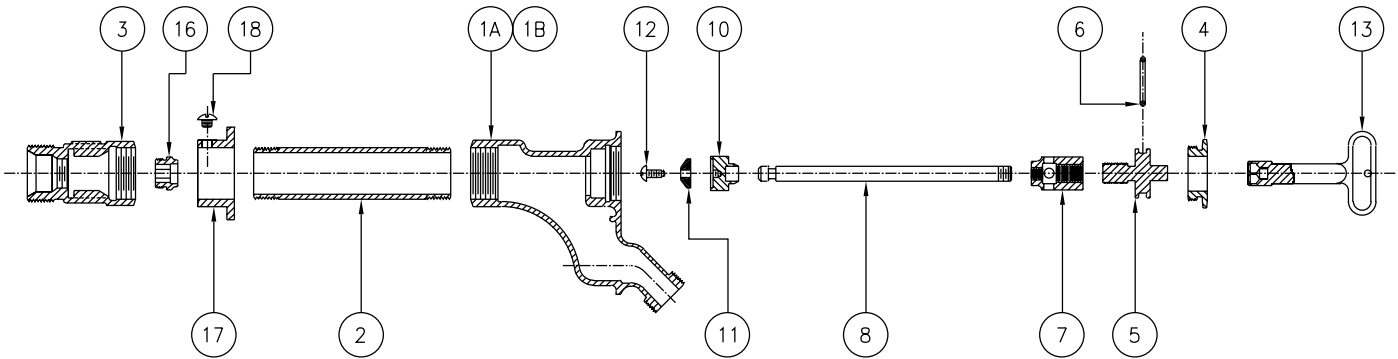
- PB** Polished Bronze Face
- RA2** 12" [305 mm] Replacement Rod Assembly with Repair Kit (-RK)
- RA4** 24" [610 mm] Replacement Rod Assembly with Repair Kit (-RK)
- RK** Hydrant Parts Repair Kit
- SB** Statuary Bronze Face (Specify light, medium, or dark finish.)
- VB** 3/4" [19 mm] Adapter Vacuum Breaker
- WC** Wall Clamp
- 34FS** 3/4" [19 mm] Solder Female Inlet Adapter
- 34UN** 3/4" [19 mm] IP 90° Inlet Elbow with Union Nut

#### Inlet Descriptions



## Z1315 WALL HYDRANT Parts Assembly, Parts List, and Operating Rod Assemblies

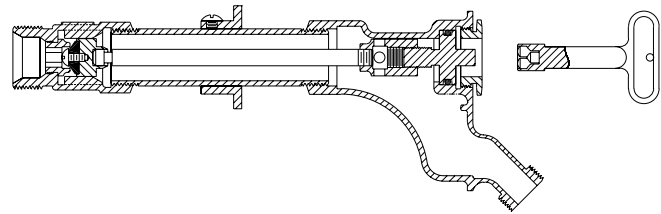
### Z1315 Parts Assembly



### Z1315 Parts List

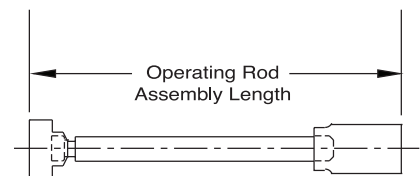
Item	Description	Qty.	Part No.
1A	Head – 3/4" Hose Connection	1	25261-001
1B	Head – 1" Hose Connection	1	25261-002
2	Casing	1	50270-XXX
3	Valve Housing	1	31258-001
4	Face Nut	1	22156-002
*5	Operating Screw	1	25049-001
*6	O-Ring	1	23750-028
*7	Operating Coupling	1	25147-001
8	Operating Rod	1	45042-XXX
10	Washer Guide	1	25050-001
*11	Washer	1	23075-001
*12	Screw #10-24 NC	1	14853-042
*13	Key	1	59546-001
*16	Removable Seat	1	25262-001
17	Wall Clamp (Optional)	1	50268-001
18	Wall Clamp Screw (Optional)	1	26050-004

\*Items are available in -RK Repair Kit Option bag (#66955-203-9).



### Operating Rod Assemblies

4" Wall	4-3/4"
6" Wall	6-3/4"
8" Wall	8-3/4"
10" Wall	10-3/4"
12" Wall	12-3/4"
14" Wall	14-3/4"
16" Wall	16-3/4"
18" Wall	18-3/4"
20" Wall	20-3/4"
22" Wall	22-3/4"
24" Wall	24-3/4"



## Z1315 WALL HYDRANT Troubleshooting Guide

### Z1315 Troubleshooting Guide

PROBLEM	CAUSE	SOLUTION
Hydrant will not operate when turned on.	Water supply is shut off.	Turn on water supply.
Cannot turn the hydrant on with key.	Hydrant hasn't been used for a long time – O-Ring has adhered to the operating screw and head.	Follow steps 1-2, 4, and 7-8 of the Service Guide.
Water does not shut off completely when hydrant is turned off.	Debris between seat and washer.	Follow steps 1-3 and 6-8 of the Service Guide. Clean by turning water supply on and flush hydrant.
	Washer is worn out.	Follow steps 1-3 and 5-8 of the Service Guide.
	Wire draw in seat.	Replace seat.
Hydrant exhibits low flow.	Water supply to the hydrant is restricted.	Check water supply to ensure that all upstream valves are fully open.

## Z1315 WALL HYDRANT Service Guide

### Z1315 Service Guide

#### Step 1: Shutting Off the Water Supply to the Hydrant

Locate the supply shut-off valve and rotate until water supply is off.

#### Step 2: Removing the Face Nut and Adjacent Components

Using crescent wrench or 1-1/2 inch open-end wrench, remove the face nut (4) from head (1) by turning counterclockwise.

#### Step 3: Removing the Internal Operating Assembly

The internal operating assembly (5-8 and 10-12) can be removed by gripping the square end of the operating screw (5) with a pair of pliers and pulling straight out.

If the operating screw O-Ring was not the reason for service – skip to step 5.

#### Step 4: Replacing the Operating Screw O-Ring

Remove the operating screw (5) from operating coupling (7) by turning clockwise and slip the old O-Ring (6) off, and replace with new O-Ring (6). Reinstall operating screw (5) into operating coupling (7) by turning counterclockwise. **(Note:** Lubricate the operating screw (5) threads and the O-Ring (6) with Lubriplate FGL-2 if needed.)

If the hydrant shutoff washer was not the reason for service – skip to step 8.

#### Step 5: Replacing the Hydrant Shutoff Washer

Remove #10-24 NC x 3/8 screw (12) using a flat screwdriver and turning screw (12) counterclockwise, remove washer (11) and replace with new washer (11) and new screw (12) turning screw clockwise until tight.

#### Step 6: Replacing the Internal Operating Assembly

There is a flat or a V-notched boss inside of the hydrant head (1) that keeps the operating coupling (7) from rotating when hydrant is turned on and off. With operating screw (5) turned counterclockwise into operating coupling (7) until it stops, and making sure that a flat side or corner of operating coupling (7) lines up with appropriate boss, reinsert the internal operating assembly into the hydrant.

#### Step 7: Replacing the Face Nut

Insert face nut (4) into head (1), and rotate clockwise until hand tight, then using a crescent wrench or 1-1/2 inch open end wrench, snug nut (4) tight.

#### Step 8: Turning On the Water Supply

Locate the water supply shut-off valve and rotate until water supply is on.

⚠ **WARNING:** Cancer and Reproductive Harm - [www.P65Warnings.ca.gov](http://www.P65Warnings.ca.gov)  
 ⚠ **ADVERTENCIA:** Cáncer y daño reproductivo - [www.P65Warnings.ca.gov](http://www.P65Warnings.ca.gov)  
 ⚠ **AVERTISSEMENT:** Cancer et effets néfastes sur la reproduction - [www.P65Warnings.ca.gov](http://www.P65Warnings.ca.gov)

## Z1315 WALL HYDRANT 3/4" Hose Connection Chart and Graph

Z1315 Wall Hydrant – 3/4" Hose Connection				
Static Pressure (psi)	Running Inlet Pressure (psi)	Running Outlet Pressure (psi)	Flow Rate (gpm)	Pressure Drop Across Unit (psi)
10	4.7	0.9	6.1	3.8
20	12.5	3.2	9.9	9.3
30	20.9	5.7	12.8	15.2
40	29.0	8.3	15.0	20.7
50	36.9	10.8	16.9	26.2
60	44.1	13.1	18.5	31.0
70	56.0	16.8	20.8	39.2
80	63.9	19.3	22.3	44.6
90	71.6	21.7	23.6	49.8

