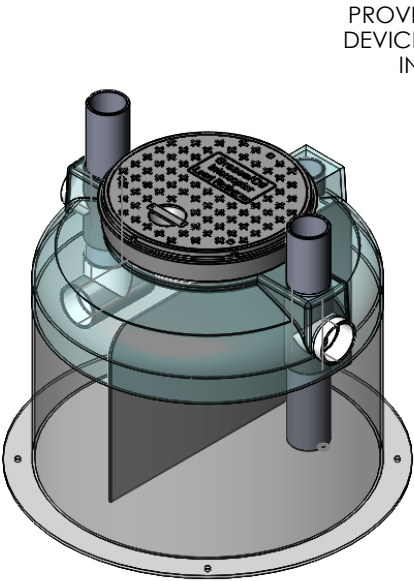
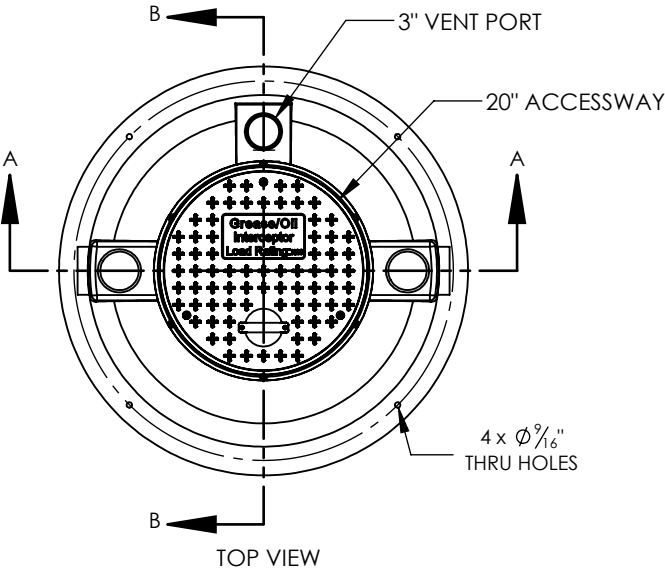


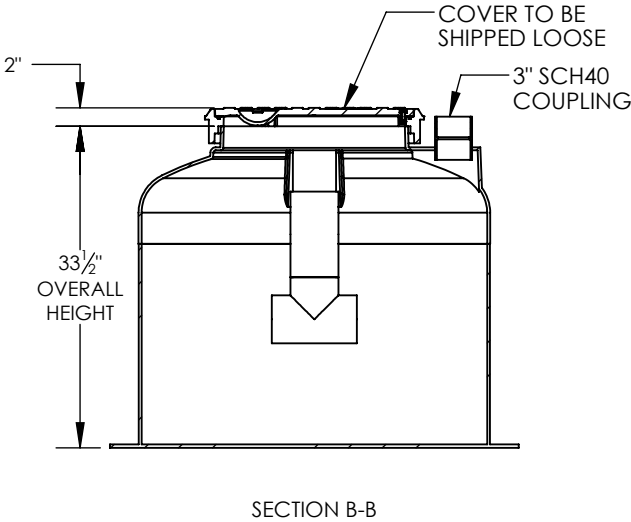
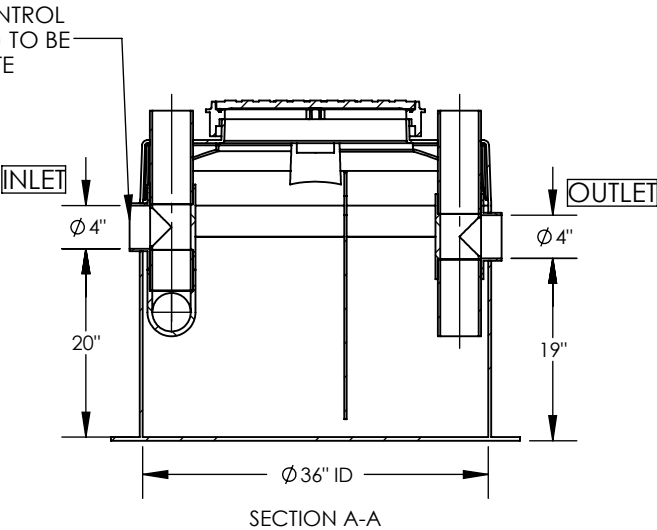
NOTES

ALL Z-75H UNITS ARE MANUFACTURED WITH FIBERGLASS REINFORCED PLASTICS.

- 1. PHYSICAL CHARACTERISTICS AND THICKNESS: POLYESTER RESIN AND E GLASS MINIMUM THICKNESS 5/16" TOP AND WALL AND 3/8" BOTTOM
- 2. ALL Z-75H UNITS ARE TO BE INSTALLED IN ACCORDANCE WITH THE MANUFACTURER'S INSTALLATION INSTRUCTION
- 3. STANDARD PIPING IS SCH. 40 PVC
- 4. Z-75H UNITS COME STANDARD WITH 4" INLET AND OUTLET
- 5. EXTENSION COLLAR TO BE ORDERED TO MEET FINISHED GRADE, CUT ON SITE FOR FINAL ADJUSTMENT AND CAULKED WITH SIKAFLEX BY CONTRACTOR FOR WATERTIGHT SEAL
- 6. COVERS AVAILABLE FOR H2O TRAFFIC LOADING, PEDESTRIAN LOADING OR ABOVE GROUND INSTALLATION
- 7. 30 YEAR WARRANTY AGAINST LEAKS, AND STRUCTURAL FAILURE DUE TO MANUFACTURING DEFECTS
- 8. U.S. PATENT #5,746,912; CDN PATENT #2,195,822



PROVIDED FLOW CONTROL DEVICE (NOT SHOWN) TO BE INSTALLED ON SITE



TOTAL WET VOLUME	85 GAL
MAX GREASE CAPACITY	150 LBS
MAX SOLID CAPACITY	
FLOW RATING	75 GPM
MAX TEMPERATURE	160 F
MIN. TEMPERATURE	- 30 F

DWG. TITLE:  
**Z75H-85 GAL  
FOGCEPTOR**

PROJECT:

SIZE  
A

DRAWING NOT TO SCALE

**Proceptor**  
**ZURN**

DWG #: 18-4649-C REV. 1