

Z5615.381.01.91.00

TAG

ZTR6200EV-LL

**1-1/2" Exposed Top Spud 1.28 gpf
EcoVantage Integral Sensor Flush
Valve for Water Closet**

Exposed high efficiency flushometer valve designed to perform to industry standards with as little as 1.28 gpf. Valve is operated by an infrared convergence-type proximity sensor with smart technology, powered by a 4 AA batteries, furnished with a vandal-resistant chrome-plated cast brass valve body, chloramine resistant internal seals, manual over ride button and reversible cover. Complete with high back pressure vacuum breaker, one piece hex coupling nut, adjustable tailpiece, spud coupling and flange for top spud connection. Control stop has internal siphon-guard protection, vandal-resistant stop cap, sweat solder kit and a cast wall flange with setscrew.



Z5955SS-EL

Toilet Seat

Elongated, standard white, open front toilet seat, less cover, with stainless steel check hinge.



Z5977-NEO

Neo Seal Gasket Kit for Wall Mount Bowls



Z5610-NUT-EXT-KIT

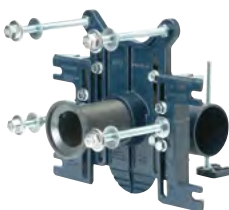
Wall-Mounted Toilet Retrofit Nut and Washer Kit



Zurn Recommended:

High Performance Carrier System

EZCarry™ horizontal or vertical siphon jet water closet carrier systems with high performance waterway. System includes Dura-Coated cast iron main fitting with hydro-mechanically optimized sweep and extended 2" [51mm] vent, adjustable gasketed faceplate, universal floor mounted pre-fab slotted foot supports, heavy-duty 1/2" [13mm] rear anchor tie down, fixture bolts, trim, stud protectors, bonded "Neo-Seal" gasket, and corrosion resistant, adjustable 3" [76mm] dia. X 6" [152mm] coupling with integral test cap designed to increase flow velocity and line carry. EZCarry system complies with the requirements of ASME A112.6.1M up to a 500 lbs [227 kg] static load rating.



Toilet / Water Closet – Wall-Mounted with Flush Valve, Toilet Seat and Accessory



Z5615-BWL

EcoVantage 1.1 gpf High Efficiency Wall-Mounted Top Spud Toilet

Vitreous china, 1.1 gpf [4.2 Lpf] or greater high efficiency, wall-mounted toilet with siphon jet flushing action and elongated front rim with 1-1/2" top spud. Valve and toilet are an engineered system designed to provide optimal performance and 31% water savings over 1.6 gpf conventional toilets.

