

Water Closet

Z5666.167.01.03.00

TAG _____

Z6011AV-WS1-BWN

Exposed AquaVantage 1.6 gpf Bedpan Washer Flush Valve for Handicap Grab Bar Installation

AquaSense 'AV' Exposed Closet Flush Valve. Exposed, quiet diaphragm-type, chrome-plated, flushometer valve with a polished exterior. Complete with Zurn AquaVantage TPE, chloramine resistant, dual seal diaphragm with a clog resistant, triple filtered by-pass. The valve incorporates a 6VDC motor actuator, a battery powered automatic sensor, high impact resistant polycarbonate housing and chrome-plated metal cover with manual override push button, high back pressure vacuum breaker, one-piece hex coupling nut, adjustable tailpiece, spud coupling and flange for top spud connection. Control stop has internal siphon-guard protection, vandal-resistant stop cap, sweat solder kit, and a cast wall flange with setscrew. Internal seals are made of chloramine resistant materials.



Z5955SS-EL

Elongated, Standard White, Open Front Toilet Seat

Elongated, standard white, open front toilet seat, less cover, with stainless steel check hinge.



Z5972-COMB

Closet Bolt and Wax Ring Kit



Toilet / Water Closet – Floor-Mounted with Flush Valve, Toilet Seat and Accessory

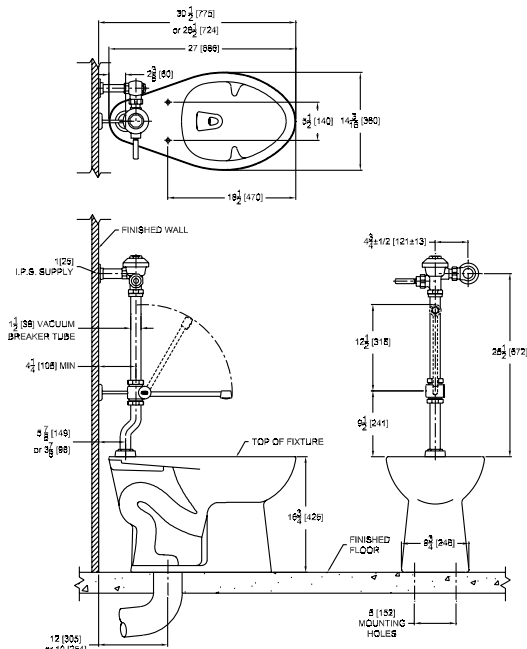
Z5666-BWL

EcoVantage 1.28 gpf High

Efficiency or 1.6 gpf Flush Valve

System with Floor-Mounted ADA Compliant Toilet

Vitreous china, 1.28 gpf [4.8 Lpf] or greater high efficiency, ADA, floor-mounted, bottom outlet toilet with siphon jet flushing action, elongated front rim with integral bedpan lugs, and 1-1/2" top spud. This bowl is designed to perform to industry standards with as little as 1.28 gpf, engineered to provide optimal performance and 20% water savings over conventional 1.6 gpf toilets.



These dimensions and specifications are subject to change without notice.

Fixture dimensions meet ANSI/ASME standard A112.19.2 and CAN/CSA B45 requirements.