

Urinal

Z5755.359.00

TAG

ZTR6203-WS1-LL

1.0 gpf EcoVantage Flush Valve with Integral Sensor and Long Life Batteries

Exposed high efficiency flushometer valve designed to perform to industry standards with as little as 1.0 gallons per flush. Valve is operated by an infrared convergence-type proximity sensor with smart technology, powered by a 4 AA long life batteries, furnished with a vandal-resistant chrome-plated cast brass valve body, chloramine resistant internal seals, manual over ride button and reversible cover. Complete with high back pressure vacuum breaker, one piece hex coupling nut, adjustable tailpiece, spud coupling and flange for top spud connection. Control stop has internal siphon-guard protection, vandal-resistant stop cap, sweat solder kit and a cast wall flange with setscrew.



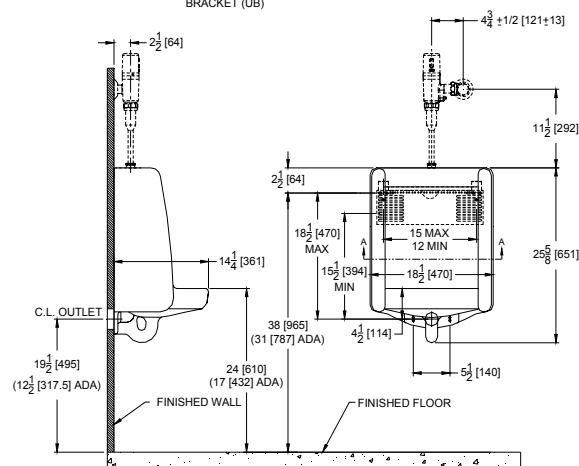
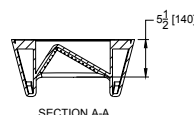
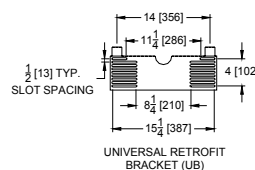
Urinal with Flush Valve

Z5755-U



Omni-Flo™ Top Spud Urinal

Vitreous china, 0.125 gpf [0.5 Lpf] to 1.0 gpf [3.8 Lpf], wall hung, washdown urinal complete with asymmetric backwall resulting in reduced splash back, high efficiency washdown flushing action, oversized footprint to make retrofit easy, 3/4" top spud, 2" I.P.S. outlet flange and rubber gasket with integral trap, 14" extended rim for handicap compliance when installed at proper height, vandal resistant outlet strainer included, and concealed universal retrofit wall bracket. Patent Pending.



These dimensions and specifications are subject to change without notice.
Fixture dimensions meet ANSI/ASME standard A112.19.2 and CAN/CSA B45 requirements.