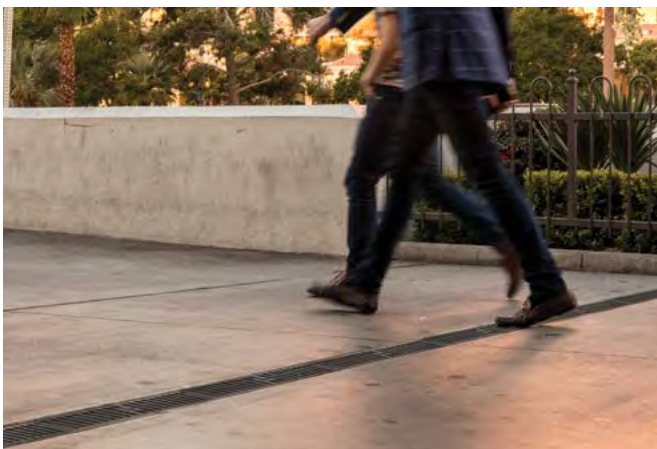


Z886 Perma-Trench® Drain Systems

Engineered Lightweight
and Designed to Last

When your pros in the field say it's handled, they'll mean it. No equipment or heavy lifting. No extra workers stepping in to help out. And most importantly, no mishaps or hefty claims as a result from lugging around multiple, bulky parts.

We engineer our trench drain systems around the notion of making it more convenient for the contractor without any compromise in performance.



Just Takes Two

Reducing installation time is always our first consideration. When a job goes smoother, you save time and money. For the Perma-Trench, the solution comes down to its design. Our system is lightweight, stronger, and features the longest HDPE channels in the industry. Our 80-inch modular sections require less manpower to install and fewer joints than comparable models, leading to a cleaner installation that saves you money.

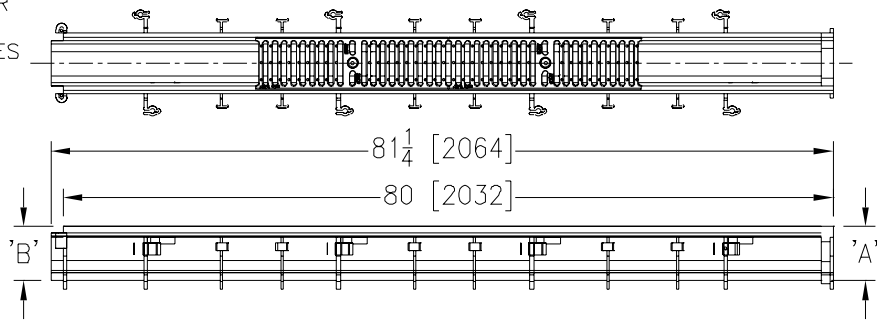
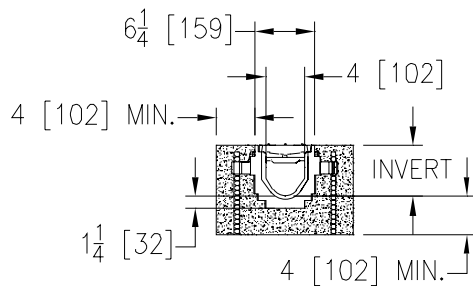
Secure and Protected

To easily set in place, the channels' rebar clips allow for quick and simple height adjustment. Combination tie-down/leveling clips at 20-inch intervals help you clinch the perfect slope. Couple that with mechanical interlocking ends, and you have a system that's effortless to carry, set, align, and level. The system also includes an optional debris cover to shield the trench during the process and prevent delays for cleanout.

Performance After Installation

Satisfying your project requirements shouldn't sacrifice performance. Perma-Trench comes standard with a radiused bottom, which increases the low-volume flow rate and reduces sediment buildup. Depending on the jobsite, contractors can choose between a 0.75% channel slope or a neutral slope for installation flexibility. Its high density polyethylene construction is non porous and corrosion resistant, helping to eliminate leaks, cracks, warping or failure from the elements. Multiple choices of grate materials, finishes, and load ratings meet all of your requirements and expectations.

SPECIFYING ENGINEER IS RESPONSIBLE FOR
CONCRETE ENCASEMENT AND REINFORCING
BASED UPON APPLICATION AND LOCAL CODES



NOTE: Actual channel length is 81-1/4" [2064 mm] to allow for overlap.
Dimensional data (inches and [mm]) are subject to manufacturing tolerances and change without notice.

Z886 Perma-Trench® Drain System Engineering Specification

Zurn Z886 Channels are 80" [2032 mm] long, 6-1/4" [159 mm] wide reveal and have a 4" [102 mm] throat. Modular channel sections are made of 0% water absorbent high density polyethylene (HDPE). Channels have a positive mechanical connection between channel sections that will not separate during the installation and mechanically lock into the concrete surround a minimum of every 10" [254 mm]. Channels weigh less than 2.31 lb per linear foot [3.9 kg/m], have a smooth, 1-1/2" [38 mm] radiused self cleaning bottom with a Manning's coefficient of .009 and .75% or neutral 0% built-in slope. Channels come standard with rebar clips to secure trench in its final location. Channels also include DGC grates with lockdown bars (not intended for dynamic traffic loadings). Zurn 5-3/8" [137 mm] wide reveal ductile iron slotted grate, conforming to ASTM specification A536-84, grade 80-55-06. Ductile iron grate is rated class C per the DIN EN1433 top load classifications. Supplied in 20" [508 mm] nominal lengths with 1/2" [13 mm] wide slots and 3/4" [19 mm] bearing depth. Grate has an open area of 28.1 sq in per ft [60,308 sq mm per meter].

Now, It's Covered

Solving for our customers means continuously improving. After surveying real professionals and spending time in the field, we realized something was missing...a debris cover. The Zurn Debris Cover protects your trench drain system—saving you time and money later on from having to clean out the trench and making costly repairs. Request a cover when you order your system.



**Debris Covers are non-load bearing*

Visit zurn.com to learn more.

ZURN INDUSTRIES, LLC Trench Drainage Operation
1801 Pittsburgh Avenue, Erie, PA 16502, 855.663.9876

In Canada: **ZURN INDUSTRIES LIMITED** 7900 Goreway Drive, Unit 10, Brampton, Ontario L6T 5W6, 877.892.5216
Form No. 220-058, 3/19



US 1.855.ONE.ZURN CANADA 1.877.892.5216 ZURN.COM