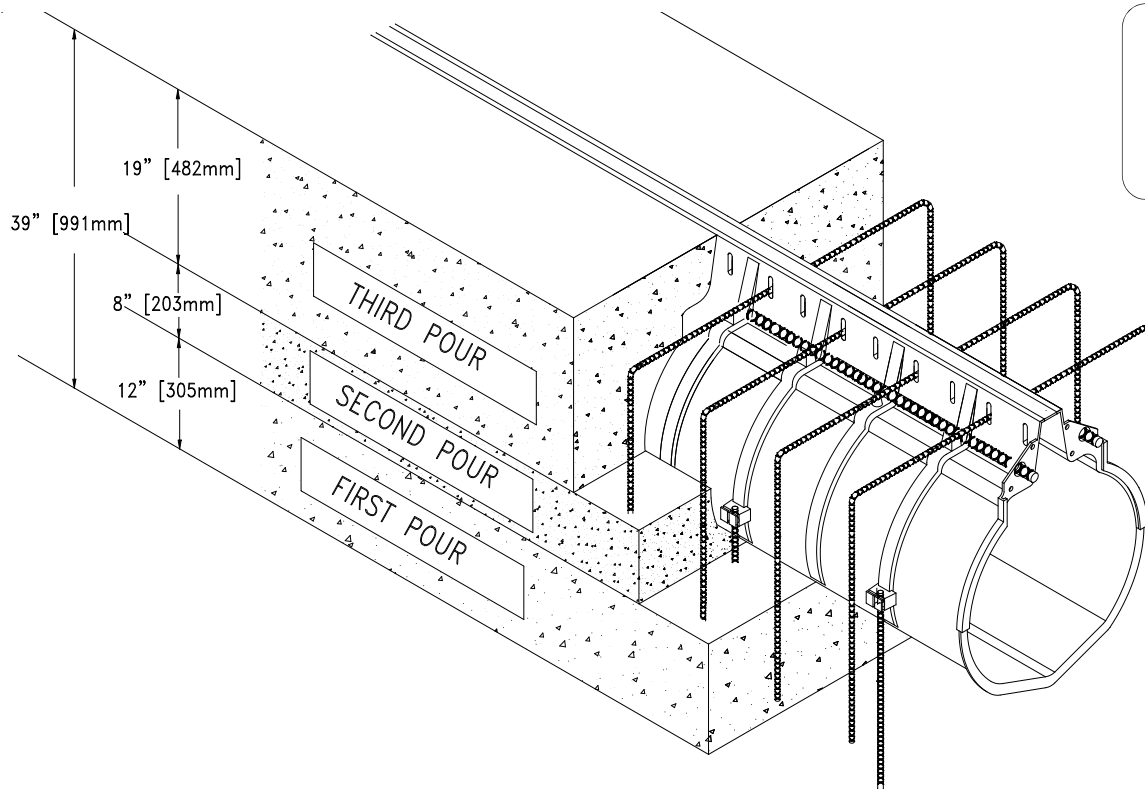


Dimensional data (inches and [mm]) are subject to manufacturing tolerances and change without notice.



Applicable to the Standard, GF(E600), or DYN(F900) Options.

Z-888-36 Trench Drain System must be installed by utilizing 3 separate pours. If a GF(E600) frame is to be used it can be attached to the channel after the second pour. If a DYN(F900) frame is to be used it is recommended that it is attached prior to the first pour.

FIRST POUR

The first pour shall be 4" (100mm) above the bottom of the trench to the base of the invert of the channel. It should encase the setting reinforcing bars and the U shaped bars on the DYN installation. This locks the installation together and prevents floatation on subsequent pours. Care must be taken not to move the channel during the pour. The concrete should be poured in even volumes down either side of the channel with attention being paid not to pour directly onto the channel. On the DYN installation the U shaped bars should remain vertical and square to the channel length after the pour. The concrete should be adequately vibrated to attain the required strength.

SECOND POUR

After 3-4 hours curing time, when the first pour is set, the second pour can be completed. Failure to allow the first pour to adequately set will result in possible floatation of the channel or damage to the channel units. Again, care must be taken not to pour directly onto channel, and the concrete should be poured and vibrated in even volumes down either side of channel. The second pour should be completed no higher than midway up to the reinforcing bar clips, i.e. to 19" (500mm) below the finished surface level.

THIRD POUR

The third pour can be completed again after 3-4 hours curing time has elapsed and it is certain that the previously placed concrete has sufficient strength to resist the weight of the final pour without moving. The final pour should be trowelled or finished so that the top edge of the channel or top frame is 1/4" (5 to 8mm) below the level of the finished surface adjacent to the trench.

⚠ WARNING: Cancer and Reproductive Harm - www.P65Warnings.ca.gov

⚠ ADVERTENCIA: Cáncer y daño reproductivo - www.P65Warnings.ca.gov

⚠ AVERTISSEMENT: Cancer et effets néfastes sur la reproduction - www.P65Warnings.ca.gov