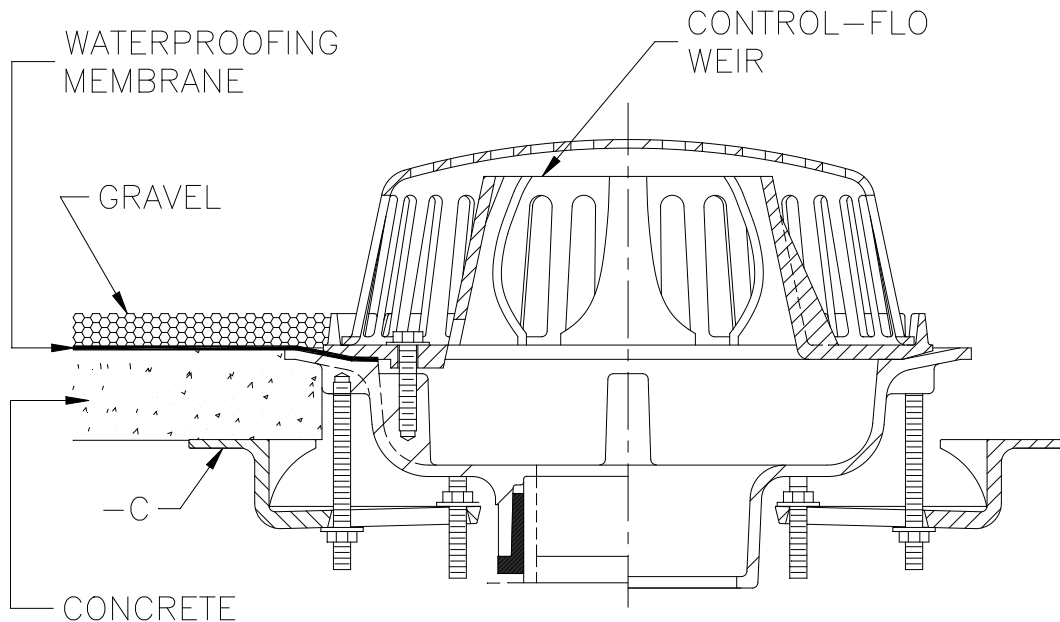




# TYPICAL INSTALLATION FOR Z105-C CONTROL-FLO INSTALLED-CONCRETE ROOF

Dimensional Data (inches and [ mm ]) are Subject to Manufacturing Tolerances and Change Without Notice



## Z105-C CONTROL-FLO INSTALLED-CONCRETE ROOF

Control-Flo roof drain. The Zurn Control-Flo roof drain can be used for almost any type roof design or installation where flow rates to the drainage system must be accurately controlled. The drain utilizes a unique weir designed that limits the flow through the drain.

1. Available with 1 to 6 inverted parabolic notches.
2. Allows linear relationship between depth of water on roof and flow rate through drain.
3. Stores water on roof with controlled discharge so that drainage system and roof structural system will not be overloaded.
4. May allow use of smaller diameter piping.

(For sizing, contact Zurn Engineering Department for details)

⚠ **WARNING:** Cancer and Reproductive Harm - [www.P65Warnings.ca.gov](http://www.P65Warnings.ca.gov)

⚠ **ADVERTENCIA:** Cáncer y daño reproductivo - [www.P65Warnings.ca.gov](http://www.P65Warnings.ca.gov)

⚠ **AVERTISSEMENT:** Cancer et effets néfastes sur la reproduction - [www.P65Warnings.ca.gov](http://www.P65Warnings.ca.gov)

**Zurn Industries, LLC | Specification Drainage Operation**  
1801 Pittsburgh Avenue, Erie, PA U.S.A. 16502 · Ph. 855-663-9876, Fax 814-454-7929  
In Canada | **Zurn Industries Limited**  
3544 Nashua Drive, Mississauga, Ontario L4V 1L2 · Ph. 905-405-8272, Fax 905-405-1292  
[www.zurn.com](http://www.zurn.com)

Rev. A  
Date: 04/06/2018  
C.N. No. 139850  
Form No. RD12