

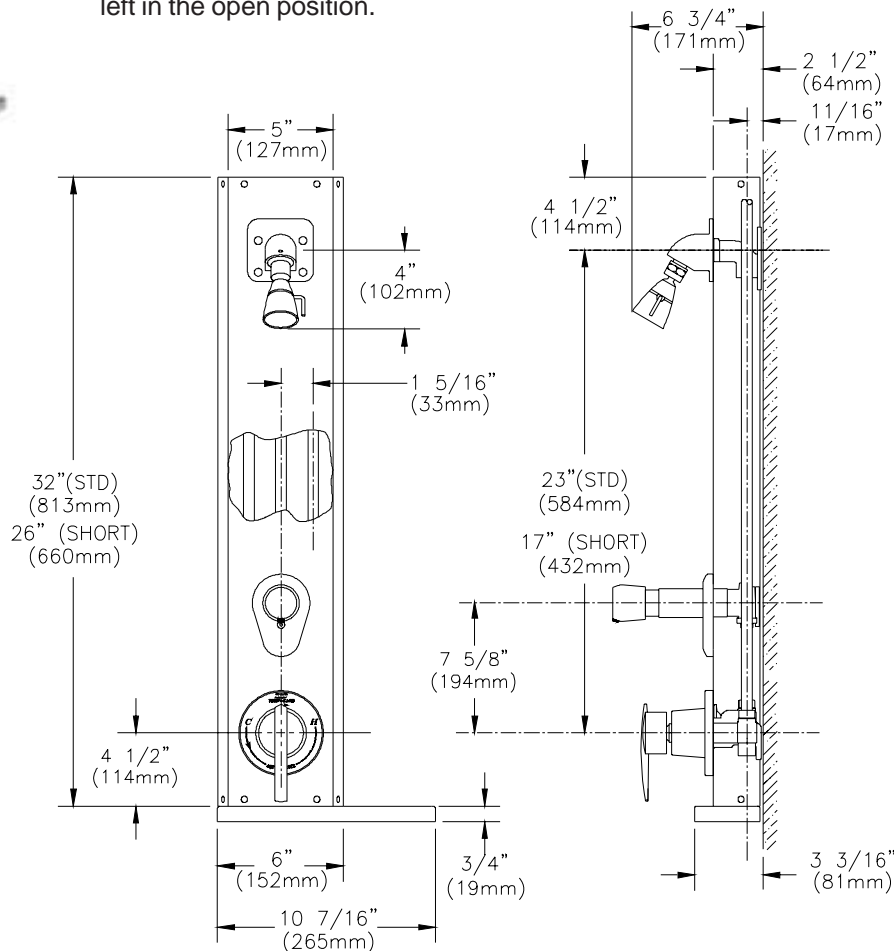
**AQUA PANEL SHOWER UNIT
w/ METERING SHOWER VALVE**

Z7533

TAG _____



ENGINEERING SPECIFICATIONS: ZURN Z7533 Prefabricated stainless steel shower unit, consisting of the TEMP-GARD pressure balancing shower valve with single bronze stem, stainless steel balancing piston & bottom access integral service stops, with single push button on-off control, with adjustable metering feature aqua panel unit. Standard with 1/2" copper tubing assembly enclosed by 18 gage stainless steel #4 brushed finish shroud, chrome plated brass shower head with flow control on institutional bracket, metal stem handle, side mount soap dish & all vandal proof securing screws. This unit includes Z7000-SC dual spring checks on the hot and cold inlets to eliminate the chance for cross connection if the PBV were left in the open position.



Note: All dimensions are for reference only. Do not use for pre-plumbing

OPTIONS (Check/specify appropriate options)

STANDARDS

Suffix	Description
___ i2	Fixed Spray Institutional Shower Head
___ LS	Less Soap Dish
___ SL	Short Length Shroud 26" (660mm)
___ 14	14 Gage Stainless Steel Shroud
___ 16	16 Gage Stainless Steel Shroud

Tested to meet the following standards for valves and plumbing fittings:
Shower heads meet ANSI A112.18.1
Valve meets ASSE 1016 - 2005.



ZURN INDUSTRIES, LLC ♦ COMMERCIAL BRASS OPERATION ♦ 2640 SOUTH WORK STREET ♦ FALCONER NY 14733

Phone: 1-800-997-3876 ♦ Fax: 1-919-775-3541 ♦ www.zurn.com

In Canada: ZURN INDUSTRIES LIMITED ♦ 3544 Nashua Drive ♦ Mississauga, Ontario L4V1L2 ♦ Phone: 905/405-8272 Fax: 905/405-1292

AquaSpec® is a registered trademark of Zurn Industries, LLC
©2011 Zurn Industries, LLC

Rev. C

Dwg. No. 66266

Date: 6/7/11

C.N. No. 127786

Product No. Z7533