

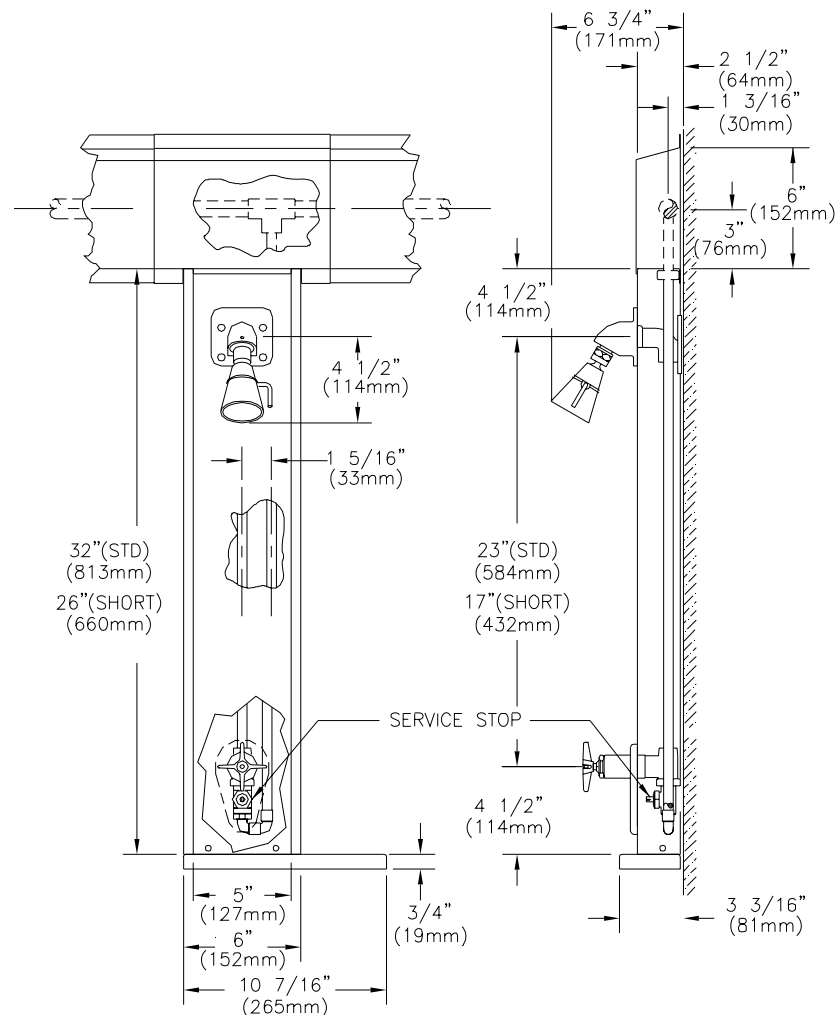


AQUA-PANEL SHOWER UNIT

Z7550-TH

TAG _____

ENGINEERING SPECIFICATION: ZURN Z7550-TH Prefabricated stainless steel shower unit, consisting of an on-off valve with bottom access integral service stop. Standard with 1/2" copper tubing assembly enclosed by 18 gage stainless steel #4 brushed finish shroud, 18 gage #4 finish horizontal piping cover with adjustable shroud cap, chrome plated brass shower head with flow control on institutional bracket, metal stem handle, side mount soap dish & all vandal proof securing screws.



Note: All dimensions are for reference only. Do not use for pre-plumbing

OPTIONAL ACCESSORIES

Suffix Description

- ___ LS Less Soap Dish
- ___ i2 Fixed Spray Institutional Shower Head
(Other Institutional Shower Heads Available)
- ___ 14 14 Gage Stainless Steel Shroud
- ___ 16 16 Gage Stainless Steel Shroud

STANDARDS

Designed to meet the following standard for valves and plumbing fittings:
ASME A112.18.1/CSA B125.1

ZURN INDUSTRIES, INC. ♦ COMMERCIAL BRASS OPERATION ♦ 2640 SOUTH WORK STREET ♦ FALCONER NY 14733

Phone: 1-716-665-1132 ♦ Fax: 1-716-665-1135 ♦ World Wide Web: www.zurn.com

In Canada: ZURN INDUSTRIES LIMITED ♦ 3544 Nashua Drive ♦ Mississauga, Ontario L4V1L2 ♦ Phone: 905/405-8272 Fax: 905/405-1292