



# Z5820

## Round Self Rimming Cast Iron Lavatory

TAG \_\_\_\_\_

### Architectural/Engineering Specification:

19" round enameled cast iron self-rimming lavatory with various faucet holes setup.

### Product Features:

- 19" [482 mm] round
- Enameled cast iron
- Faucet holes for single, 4" or 8" centers
- Self-rimming
- Waste: 1-1/4" O.D.
- Depth: 6-1/2"
- Inside Bowl Dimensions: 14-3/4" x 12"
- Shipping Weight: 38 lbs.

### Compliance and Certification:

- ADA Compliant
- ASME A112.19.1/ CSA B45.2



ADA  
DESIGNED



### Recommended Trim:

- Z8743-PC Grid Strainer
- Z8700 Series P-Trap
- Z8800 Series Top with Flexible Supplies
- Z8946-1-NT ADA Trap, Stop, and Supply Protectors

### Optional Trim:

- Z8746-PC ADA Grid Strainer
- Z8946-3-NT ADA Trap, Stop, and Supply Protectors for Offset Grid Strainers

### Faucet Hole Option:

- Z5821 Single Center Faucet Hole
- Z5824 4" Center Faucet Holes
- Z5828 8" Center Faucet Holes

Fixture dimensions meet ASME A112.19.1 / CSA B45.2 requirements.

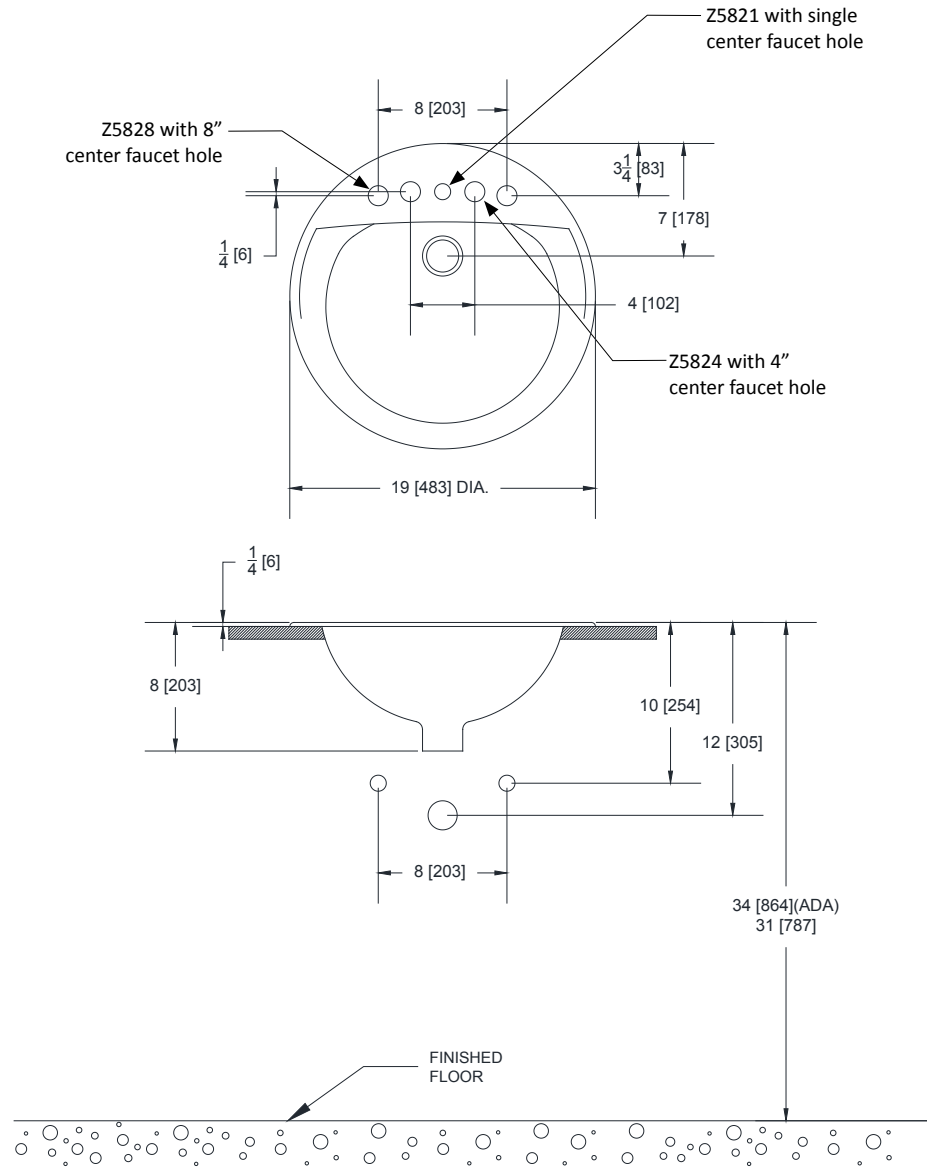
Meets the American Disabilities Guidelines and ANSI A117.1 requirements when lavatory is installed 34" [864mm] from finished floor.

Architectural/Engineering Approval

The information contained in this document is subject to change without notice. Please contact Zurn for most up to date information.



### Rough-in dimensions/Overview dimensions



Fixture dimensions meet ASME A112.19.1 / CSA B45.2 requirements.

Meets the American Disabilities Guidelines and ANSI A117.1 requirements when lavatory is installed 34" [864mm] from finished floor.