

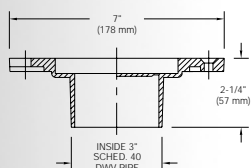
3" x 4" FLUSH FLOOR CLOSET FLANGE

- Recommended for light commercial or residential applications.
- PVC or ABS body is designed for a flush with floor installation.
- Fits over 3" [76mm] or inside 4" [102mm] Schedule 40 DWV pipe.

Body Type	Model Number	Pipe Connections	Box Qty.	List Price Each
PVC	CF2987-PVC	3" [76] x 4" [102] PVC Solvent Weld	24	\$6.00
ABS	CF2987-ABS	3" [76] x 4" [102] ABS Solvent Weld	24	6.00

Options

Suffix	Description	Add
-TC	Knock-out Test Cap	\$2.00



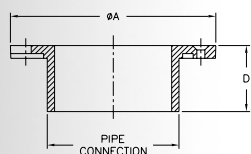
INSIDE 3" PIPE CLOSET FLANGE

- Recommended for light commercial or residential applications.
- PVC or ABS body is designed to fit inside 3" [76mm] Schedule 40 DWV pipe.

Body Type	Model Number	Pipe Connections	Box Qty.	List Price Each
PVC	CF2988-PVC	3" [76] PVC Solvent Weld	24	\$5.00
ABS	CF2988-ABS	3" [76] ABS Solvent Weld	24	5.00

Options

Suffix	Description	Add
-TC	Knock-out Test Cap	\$2.00



FLUSH FLOOR SPIGOT CLOSET FLANGE

- Recommended for light commercial and/or residential applications.
- This all-plastic closet flange is designed to fit inside Schedule 40 DWV hub.

Body Type	Model Number	Pipe Connection	Box Qty.	List Price Each
PVC	CF2989-PV3	3" [76] PVC Hub	24	\$5.00
	CF2989-PV4	4" [102] PVC Hub	24	5.00
ABS	CF2989-AB3	3" [76] ABS Hub	24	5.00
	CF2989-AB4	4" [102] ABS Hub	24	5.00

Options

Suffix	Description	Add
-TC	Integral Test Cap	\$.70