



DECK PLATE DRAINAGE/CLEANOUT SERIES

DECK PLATE FLOOR DRAIN/CLEANOUT INSTALLATION INSTRUCTIONS

Design and Dimensional Data (inches and [mm]) are Subject to Manufacturing Tolerances and Change Without Notice

⚠ Warning: Flying material can cause eye injury or blindness and sharp edges could cause cuts or lacerations. Wear safety glasses and gloves when installing or working on drain.

1. Cut or core a 6" hole in the floor. (I.E. Concrete Fig. 1A, wood floor Fig. 1B or corrugated steel deck Fig. 1C)

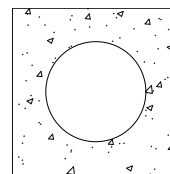


Fig. 1A

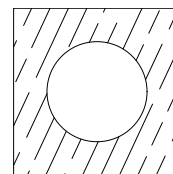


Fig. 1B

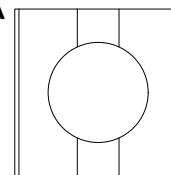


Fig. 1C

2. Place drain body with deck plate into cut hole.

Secure the deck plate to the floor with the appropriate fastener (supplied by others) for the installed floor (concrete shown as reference). See Fig. 2

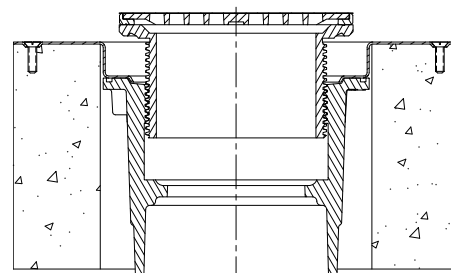


Fig. 2

Drain

3. Connect pipe to drain body and pressure test connection per local code requirements. See Fig. 3 (Neo-loc body shown for reference)

Note: All plastic bodies to be solvent welded to pipe.

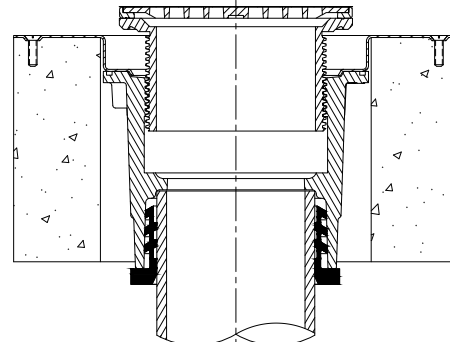


Fig. 3

Cleanout

- 3A. Install cleanout body on pipe and pressure test connection per local code requirements.
See Fig. 3A (No-Hub Body shown as reference)

Ensure that the cleanout plug is installed using an approved thread sealant.

Note: All plastic bodies to be solvent welded to pipe.

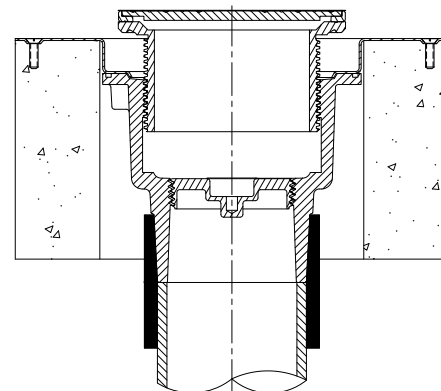


Fig. 3A

⚠ WARNING: Cancer and Reproductive Harm - www.P65Warnings.ca.gov

⚠ ADVERTENCIA: Cáncer y daño reproductivo - www.P65Warnings.ca.gov

⚠ AVERTISSEMENT: Cancer et effets néfastes sur la reproduction - www.P65Warnings.ca.gov

Zurn Industries, LLC | Specification Drainage Operation
1801 Pittsburgh Avenue, Erie, PA 16502, Ph. 855.663.9876

In Canada | Zurn Industries Limited
7900 Goreway Drive, Unit 10, Brampton, Ontario L6T 5W6, Ph. 877.892.5216

www.zurn.com

Rev. A
Date: 1/2/2023
C.N. No. 144898
Patent zurn.com/patents
Dwg. No. FD123



DECK PLATE DRAINAGE/CLEANOUT SERIES

DECK PLATE FLOOR DRAIN/CLEANOUT INSTALLATION INSTRUCTIONS

Design and Dimensional Data (inches and [mm]) are Subject to Manufacturing Tolerances and Change Without Notice

If not installing a waterproofing membrane, skip to step 7

4. If installing a waterproof membrane, Remove head assembly.

See Fig. 4

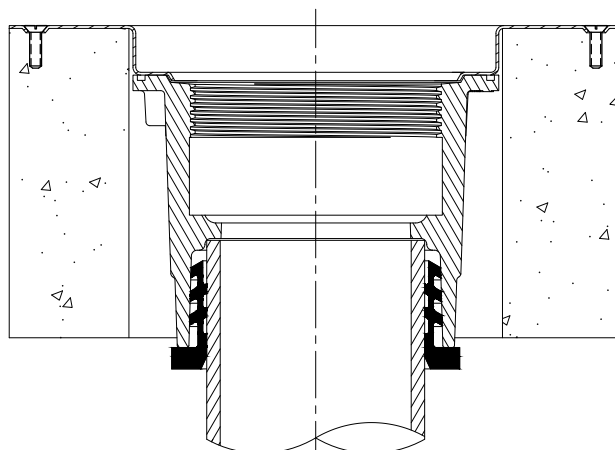


Fig. 4

5. Install the waterproofing membrane per manufacturers instructions. Cut and remove waterproofing membrane along inside circumference of the deck plate.

See Fig. 5

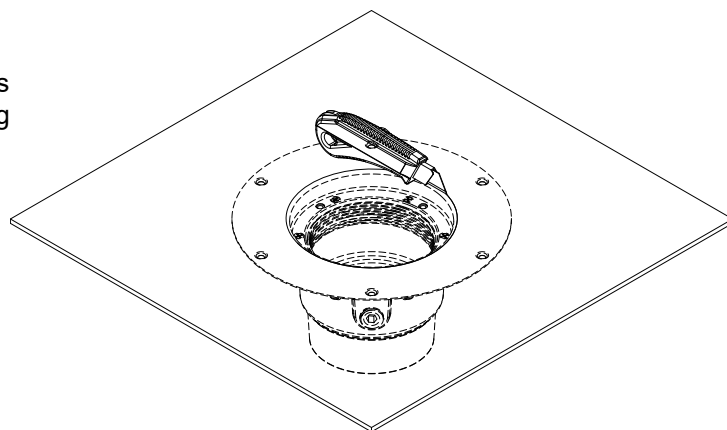


Fig. 5

6. Add a bead of silicone around inside edge on the bottom of clamping collar. Secure -CC (clamp collar) to the body with the supplied 1/4-20 x 1/2 hex washer head cap screw.

⚠ Do not overtighten, Max. torque 8 ft-lbs [11 Nm]

Note: Clamping collar is not standard, specify -CC option when ordering.

See Fig. 6

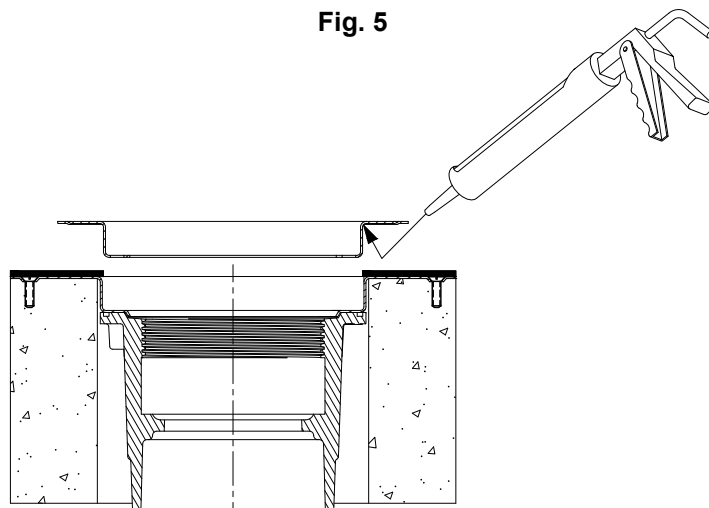


Fig. 6

⚠ **WARNING:** Cancer and Reproductive Harm - www.P65Warnings.ca.gov

⚠ **ADVERTENCIA:** Cáncer y daño reproductivo - www.P65Warnings.ca.gov

⚠ **AVERTISSEMENT:** Cancer et effets néfastes sur la reproduction - www.P65Warnings.ca.gov

Zurn Industries, LLC | Specification Drainage Operation
1801 Pittsburgh Avenue, Erie, PA 16502, Ph. 855.663.9876

In Canada | Zurn Industries Limited
7900 Goreway Drive, Unit 10, Brampton, Ontario L6T 5W6, Ph. 877.892.5216

www.zurn.com

Rev. A
Date: 1/2/2023
C.N. No. 144898
Patent zurn.com/patents
Dwg. No. FD123



DECK PLATE DRAINAGE/CLEANOUT SERIES

DECK PLATE FLOOR DRAIN/CLEANOUT INSTALLATION INSTRUCTIONS

Design and Dimensional Data (inches and [mm]) are Subject to Manufacturing Tolerances and Change Without Notice

7. Adjust head assembly to the height of the finish floor. See Fig. 7A

See Fig. 7B for square head installation.

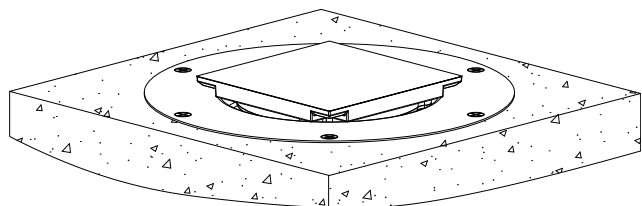


Fig. 7B

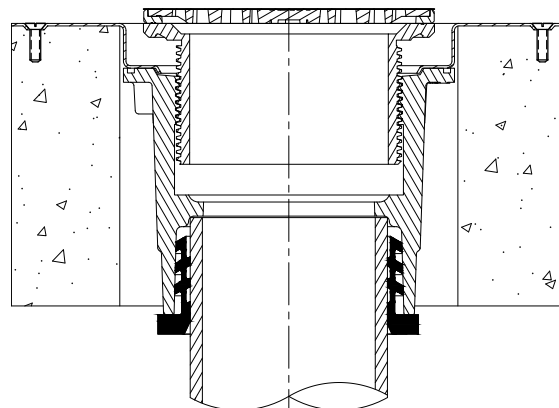


Fig. 7A

For Secondary Pour

8. Pour finish floor slab flush to the top of the head assembly ensuring gaps around and underneath the head assembly are filled.

Note: If fixture is above floor surface, it is recommended to hand finish concrete around fixture to avoid damage.

Remove protective label from strainer once construction is complete. See Fig. 8A

See Fig. 8B for square head installation

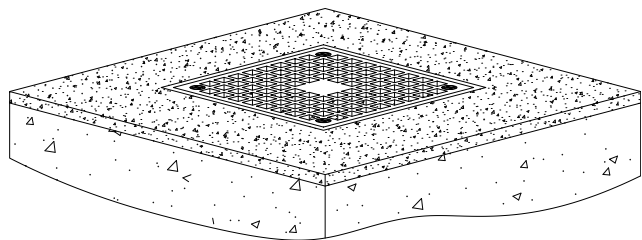


Fig. 8B

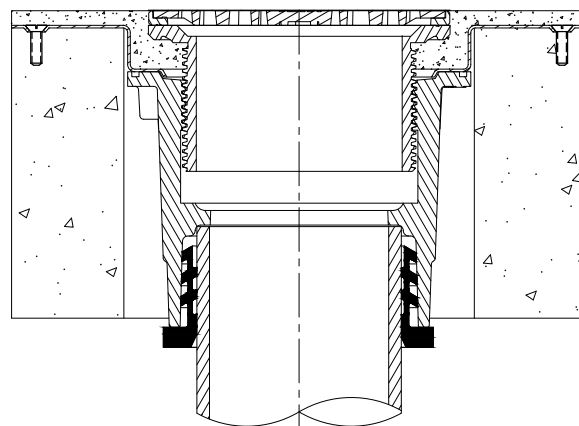


Fig. 8A

⚠ WARNING: Cancer and Reproductive Harm - www.P65Warnings.ca.gov
⚠ ADVERTENCIA: Cáncer y daño reproductivo - www.P65Warnings.ca.gov
⚠ AVERTISSEMENT: Cancer et effets néfastes sur la reproduction - www.P65Warnings.ca.gov

Zurn Industries, LLC | Specification Drainage Operation
1801 Pittsburgh Avenue, Erie, PA 16502, Ph. 855.663.9876

In Canada | Zurn Industries Limited
7900 Goreway Drive, Unit 10, Brampton, Ontario L6T 5W6, Ph. 877.892.5216

www.zurn.com

Rev. A
Date: 1/2/2023
C.N. No. 144898
Patent zurn.com/patents
Dwg. No. FD123

Page 3 of 5



DECK PLATE DRAINAGE/CLEANOUT SERIES

DECK PLATE FLOOR DRAIN/CLEANOUT INSTALLATION INSTRUCTIONS

Design and Dimensional Data (inches and [mm]) are Subject to Manufacturing Tolerances and Change Without Notice

For Tile Installation

9. Fill in gap surrounding head assembly with grout (or similar).

Install finished flooring per manufacturers instructions.

Remove protective label from strainer once construction is complete. See Fig. 9A

See Fig. 9B for square head installation

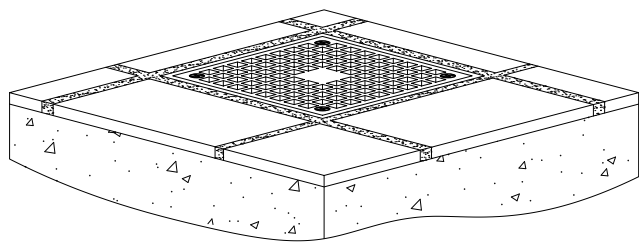


Fig. 9B

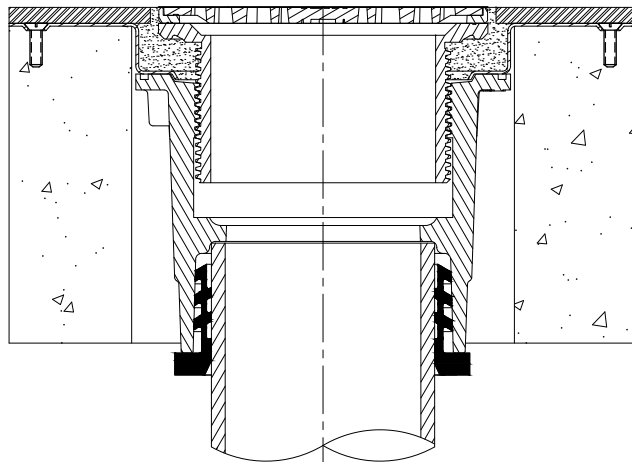


Fig. 9A

For Linoleum Flooring (Round Head Assemblies Only)

10. Fill in gap surrounding head assembly with grout (or similar).

See figure 10A

Install linoleum flooring per manufacturer's instructions.

Remove protective label from strainer once construction is complete. See Fig. 10B

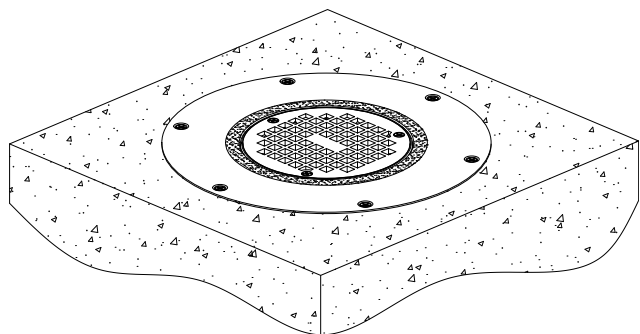


Fig. 10A

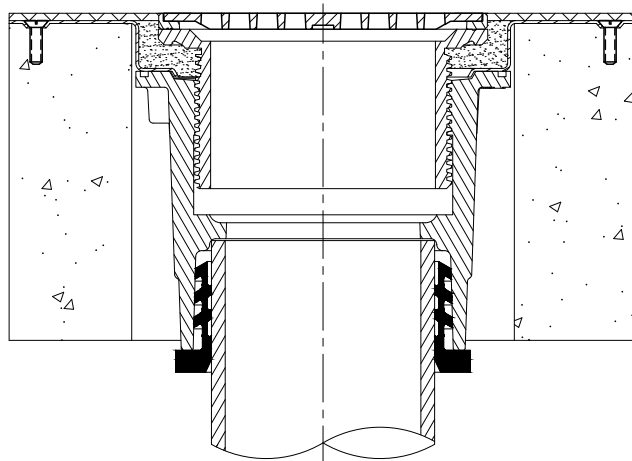


Fig. 10B

⚠ WARNING: Cancer and Reproductive Harm - www.P65Warnings.ca.gov

⚠ ADVERTENCIA: Cáncer y daño reproductivo - www.P65Warnings.ca.gov

⚠ AVERTISSEMENT: Cancer et effets néfastes sur la reproduction - www.P65Warnings.ca.gov

Zurn Industries, LLC | Specification Drainage Operation
1801 Pittsburgh Avenue, Erie, PA 16502, Ph. 855.663.9876

In Canada | Zurn Industries Limited
7900 Goreway Drive, Unit 10, Brampton, Ontario L6T 5W6, Ph. 877.892.5216

www.zurn.com

Rev. A
Date: 1/2/2023
C.N. No. 144898
Patent zurn.com/patents
Dwg. No. FD123



DECK PLATE DRAINAGE/CLEANOUT SERIES

DECK PLATE FLOOR DRAIN/CLEANOUT INSTALLATION INSTRUCTIONS

Design and Dimensional Data (inches and [mm]) are Subject to Manufacturing Tolerances and Change Without Notice

For Linoleum Flooring with Floor Insert (Round Top Assembly Only)

Note: Floor insert is not standard, specify -FI option when ordering.

11. Remove head assembly. Place bead of silicone on lower face of deck plate. Place floor insert into deck plate assembly. Place a bead of silicone around last thread of head assembly. Re-install round head assembly level with finished floor See Fig. 11A

Place bead of silicone around perimeter of drain.
(on top of -FI)

Install linoleum flooring per manufacturers instructions.

Wipe away excess silicone then remove protective label from strainer once construction is complete.
See Fig. 11B

Fig. 11C shown for reference.

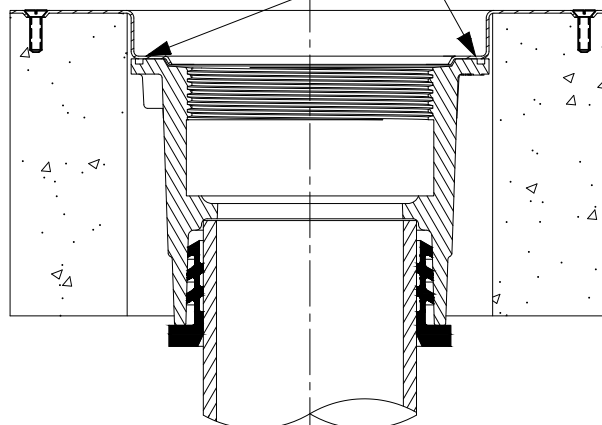
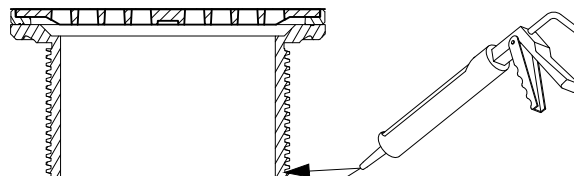


Fig. 11A

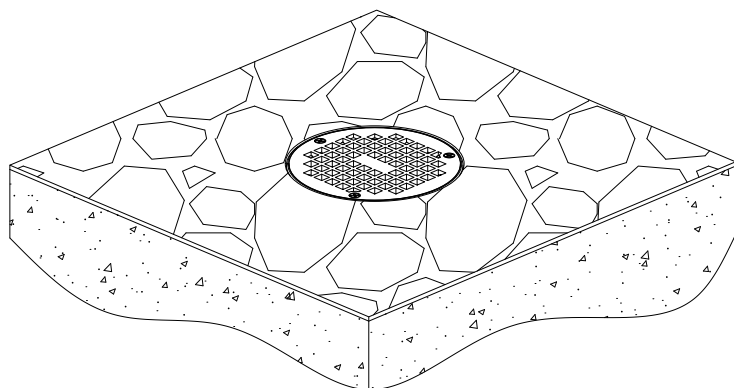


Fig. 11B

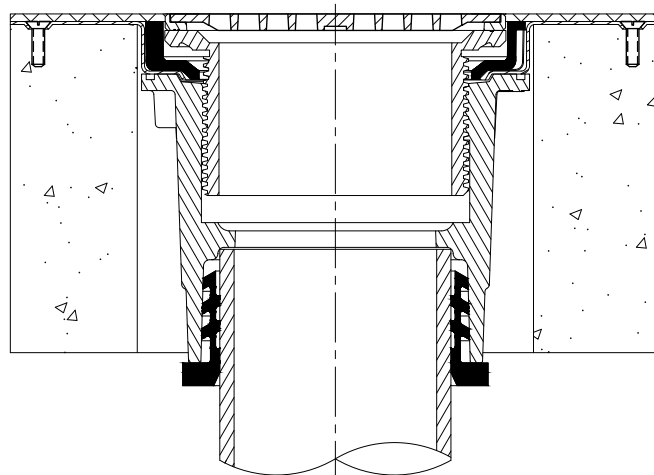


Fig. 11C

⚠ WARNING: Cancer and Reproductive Harm - www.P65Warnings.ca.gov

⚠ ADVERTENCIA: Cáncer y daño reproductivo - www.P65Warnings.ca.gov

⚠ AVERTISSEMENT: Cancer et effets néfastes sur la reproduction - www.P65Warnings.ca.gov

Zurn Industries, LLC | Specification Drainage Operation
1801 Pittsburgh Avenue, Erie, PA 16502, Ph. 855.663.9876

In Canada | Zurn Industries Limited
7900 Goreway Drive, Unit 10, Brampton, Ontario L6T 5W6, Ph. 877.892.5216

www.zurn.com

Rev. A
Date: 1/2/2023
C.N. No. 144898
Patent zurn.com/patents
Dwg. No. FD123