



## Z1202-N4-XB

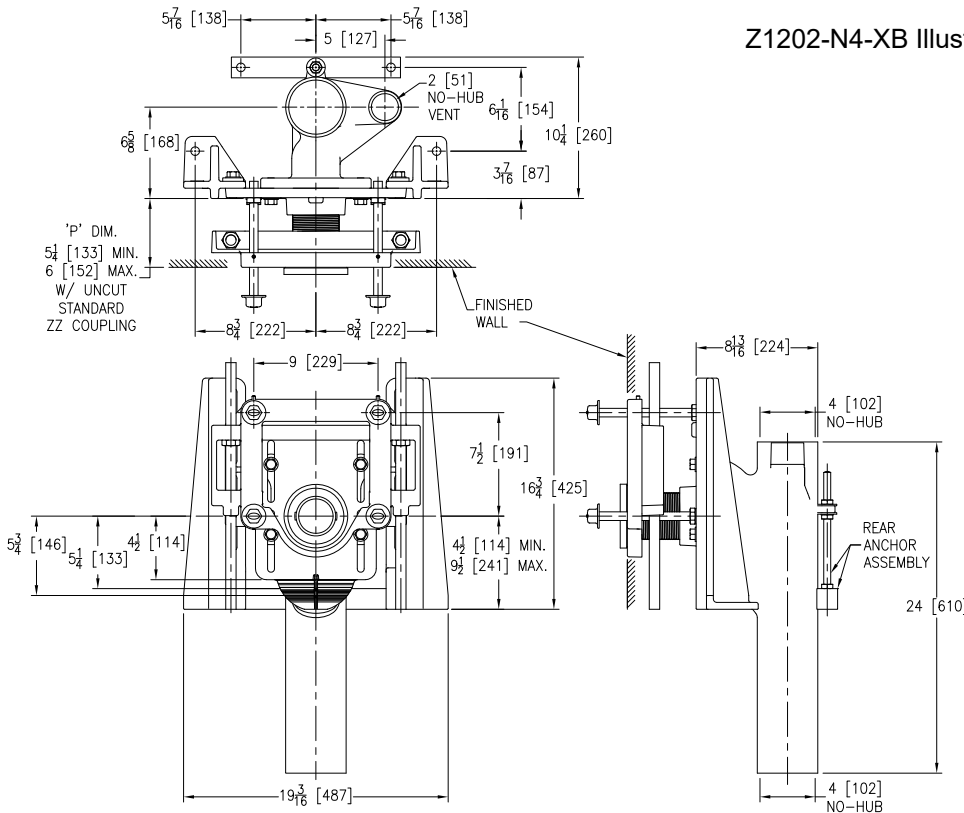
BARIATRIC CARRIER - 1000 lbs [454kg]  
EZCARRY® ADJUSTABLE VERTICAL HIGH PERFORMANCE  
SIPHON JET NO-HUB WATER CLOSET CARRIER SYSTEM

SPECIFICATION SHEET

TAG \_\_\_\_\_

Design and Dimensional Data (inches and [ mm ]) are Subject to Manufacturing Tolerances and Change Without Notice

Z1202-N4-XB Illustrated



Product Number	Approx. Wt. lbs [kg]
Z1202-N4-XB	115 [52]

### Note:

1. Cut ZZ Coupling, Min. 'P' Dim. Obtainable = 3 [76]
2. Feet bolted to floor using 1/2 [13] dia. anchors.
3. Rear anchor foot required for secure installation.
4. Floor anchors must each be able to withstand a pull-out force of 748 lbs [339 kg].
5. Pull-out forces are calculated values with standard coupling assembly. No safety factor has been applied. See Form C38 for more information.
6. 2 [51] No-Hub vent connection regularly furnished on right hand side. Left hand available when specified (Suffix -VL)
7. Auxiliary inlet available right (-JR) or left (-JL) or both sides (-JJ) when specified.

### ENGINEERING SPECIFICATION: ZURN Z1202-N4-XB

EZCarry® Bariatric vertical siphon jet water closet carrier system, with high performance Dura-Coated cast iron main fitting with hydromechanically optimized sweep, 4" [102 mm] no-hub connections, and extended 2" [51 mm] vent. Corrosion resistant, adjustable 3" [76mm] x 6" [102mm] cast iron coupling, designed to increase flow velocity and line carry, and labor saving "Neo-Seal" bonded gasket optimizes flow performance while reducing installation steps. Complete system includes an adjustable, gasketed faceplate; floor mounted foot supports; rigid support frame assembly; extra-heavy-duty 1/2" [13 mm] rear anchor tie down; fixture bolts, trim, and stud protectors. EZCarry® XB system complies with all applicable requirements of ASME A112.6.1M up to a 1000 lbs [454 kg] maximum static load.

### OPTIONS (Check/specify appropriate options)

\_\_\_\_ Z1202-N4-XB 4 [102] No-Hub Stack, Single Inlet, 2 [51] Right Hand Vent

### PREFIXES

\_\_\_\_ Z D.C.C.I. System with Zurn ZZ Adjustable Coupling\*

### SUFFIXES

\_\_\_\_ -CC Corrosion Resistant Cast Iron Coupling  
(2-1/4 [57] to 12 [305])  
\_\_\_\_ -G Galvanized Cast Iron  
\_\_\_\_ -JJ Two 2 [51] Auxiliary Inlets

\_\_\_\_ -JL 2 [51] Left-Hand Auxiliary Inlet  
\_\_\_\_ -JR 2 [51] Right-Hand Auxiliary Inlet  
\_\_\_\_ -VP Vandal-Proof Trim  
\_\_\_\_ -50 Flush Valve Supply Support for Water Closets

\* Regularly furnished unless otherwise specified.

⚠ **WARNING:** Cancer and Reproductive Harm - [www.P65Warnings.ca.gov](http://www.P65Warnings.ca.gov)

⚠ **ADVERTENCIA:** Cáncer y daño reproductivo - [www.P65Warnings.ca.gov](http://www.P65Warnings.ca.gov)

⚠ **AVERTISSEMENT:** Cancer et effets néfastes sur la reproduction - [www.P65Warnings.ca.gov](http://www.P65Warnings.ca.gov)

Zurn Industries, LLC | Specification Drainage Operation  
1801 Pittsburgh Avenue, Erie, PA USA 16502, Ph. 855.663.9876

In Canada | Zurn Industries Limited  
7900 Goreway Drive, Unit 10, Brampton, Ontario L6T 5W6, Ph. 877.892.5216

[www.zurn.com](http://www.zurn.com)

Rev. D  
Date: 12/27/22  
C.N. No. 144897  
Patent [zurn.com/patents](http://zurn.com/patents)  
Prod. | Dwg. No. Z1202-N4-XB