



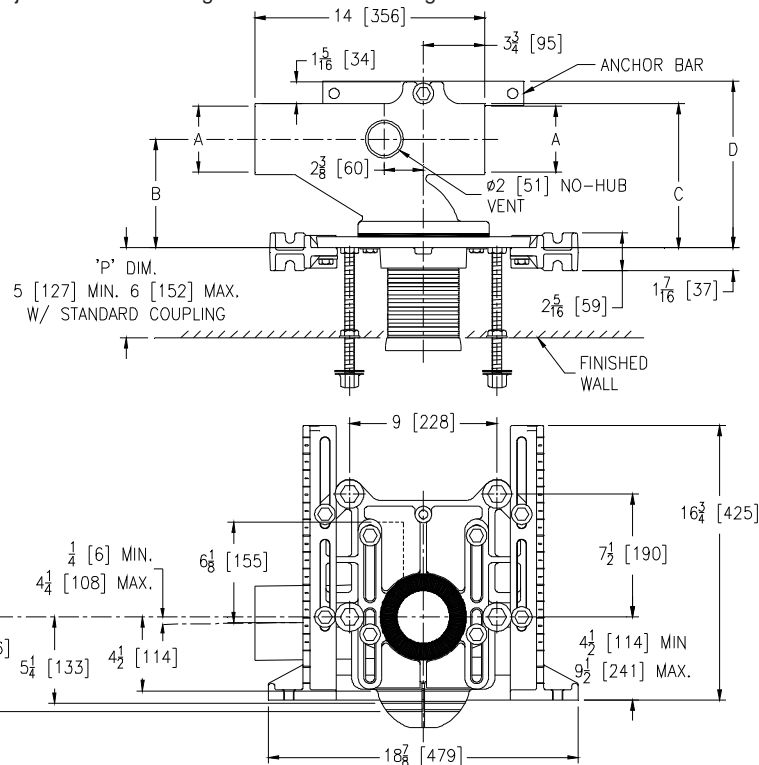
# Z1203-N-X

ADJUSTABLE HORIZONTAL SIPHON JET 500 LB.  
[227 KG.] NO-HUB W/ HEAVY-DUTY REAR ANCHOR  
TIE DOWN

SPECIFICATION SHEET

TAG \_\_\_\_\_

Dimensional Data (inches and [ mm ]) are Subject to Manufacturing Tolerances and Change Without Notice



## Note:

1. Min. 'P' Dim. Obtainable=2 [51]
2. Feet bolted to floor using min. 1/2 [13] dia. bolts and back slots on carrier feet.
3. Rear anchor bar required for secure installation.

Product Number	A	B	C	D	Approx. Wt. Lbs. [kg.]
Z1203-NL3/NR3-X	3 [76]	5-13/16 [148]	7-1/2 [190]	8-7/8 [225]	70 [32]
Z1203-NL4/NR4-X	4 [102]	6-11/16 [170]	8-7/8 [224]	10-1/8 [258]	74 [34]

## ENGINEERING SPECIFICATION: ZURN Z1203-N(-)-X

Adjustable, horizontal siphon jet 500 Lb.[227 Kg.] water closet "Rigid System" with No-Hub connections. Complete with Dura-Coated cast iron right hand or left hand main fitting, with 2 [51] vent, adjustable gasketed faceplate, universal floor mounted foot supports, corrosion resistant adjustable ABS coupling with integral test cap, fixture bolts, trim, stud protectors, heavy-duty rear anchor tie down, and bonded "Neo-Seal" gasket.

## OPTIONS (Check/specify appropriate options)

_____ Z1203-NR3-X	3 [76] No-Hub Right Hand Inlet with Flow to Left
_____ Z1203-NL3-X	3 [76] No-Hub Left Hand Inlet with Flow to Right
_____ Z1203-NR4-X	4 [102] No-Hub Right Hand Inlet with Flow to Left
_____ Z1203-NL4-X	4 [102] No-Hub Left Hand Inlet with Flow to Right

## PREFIXES

_____ Z	D.C.C.I. System with Zurn "ZZ" Adjustable Coupling*
_____ ZQ	D.C.C.I. System with NPT Faceplate, Non-Adjustable Coupling

## SUFFIXES

_____ -A	Auxiliary Support Assembly (For 'P' Dim. Greater than 18 [457])	_____ -M	Auxiliary Foot Support (for 'P' Dim. 10 - 18 [254 - 457])
_____ -BC	Back Cleanout	_____ -PF	Pre-Fab Foot
_____ -CC	Corrosion Resistant Cast Iron Coupling (6 to 12 [152 to 305])	_____ -VP	Vandal Proof Trim
_____ -G	Galvanized Cast Iron	_____ -45	Finishing Frame for Siphon Jet System
_____ -CV	Closed Vent (Use only when local codes allow)	_____ -50	Flush Valve Supply Support for Water Closets
		_____ -61	"ZZ" Coupling Wrench

\* Regularly furnished unless otherwise specified.