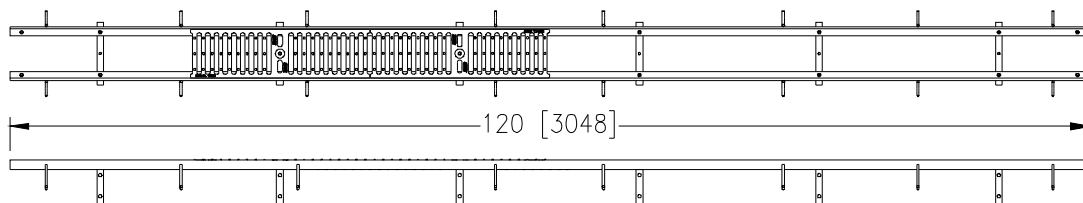
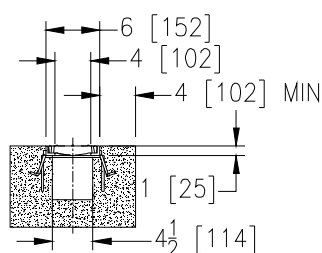


**Z706****6 [159] WIDE REVEAL FRAME AND GRATE SYSTEM****SPECIFICATION SHEET****TAG** \_\_\_\_\_

Dimensional Data (inches and [ mm ]) are Subject to Manufacturing Tolerances and Change Without Notice



SPECIFYING ENGINEER IS RESPONSIBLE FOR CONCRETE ENCASEMENT AND REINFORCING BASED UPON APPLICATION AND LOCAL CODES

**ENGINEERING SPECIFICATION: Zurn Z706**

Frame and Grate System shall be 120 [3048] long, 6 [152] wide and have a 4 [102] clear opening. Frame shall mechanically lock into the concrete surround every 10 [254]. Shall be provided with standard DGC grates that lock down to frame. Zurn 6 [152] wide reveal Ductile Iron Slotted Grate conforming to ASTM specification A536-84, Grade 80-55-06. Ductile Iron grate is rated class C per the DIN EN1433 top load classifications. Supplied in 20 [508] nominal lengths with 1/2 [13] wide slots, and 3/4 [19] bearing depth. Grate has an open area of 18.57 sq. in per ft. [39,307 sq. mm per meter]. The 1/4 [6] thick Heavy-Duty Carbon Steel Frame Assembly conforms to ASTM specification A36 with 12 - 4 [102] long concrete anchors per 120 [3048]. Grate lockdown bars are to be integral to the frame. The frame is supplied with a powder coated finish. All welds must be performed by a certified welder per ASTM standard AWS D1.1. Frames Shall be produced in the U.S.A.

**PREFIX OPTIONS (Check/specify appropriate options)**

\_\_\_ Z Ten-foot, Heavy Duty Carbon Steel Frame with Anchor Studs\*

**SUFFIX OPTIONS (Check/specify appropriate options)****Frame Options**

\_\_\_ -CBF Black Acid Resistant Coated Frame  
\_\_\_ -GFA Galvanized Frame Assembly  
\_\_\_ -SF Type 304 Stainless Steel Top Frame

**Grate Options (Load Classifications are per DIN EN1433)**

\_\_\_ -BDC Black Acid Resistant Epoxy Coated Ductile Grate - Class C  
\_\_\_ -BDE Black Acid Resistant Epoxy Coated Ductile Grate - Class E  
\_\_\_ -BG Galvanized Ductile Iron Bar Grate - Class C  
\_\_\_ -DBG Ductile Iron cast Bar Grate - Class C  
\_\_\_ -DC Ductile Iron Solid Cover - Class C  
\_\_\_ -DGC Ductile Iron Slotted Grate - Class C \*  
\_\_\_ -DGE Ductile Iron Slotted Grate - Class E  
\_\_\_ -GDC Galvanized Ductile Slotted Grate - Class C  
\_\_\_ -GDE Galvanized Ductile Slotted Grate - Class E  
\_\_\_ -GG Fiberglass Grate - Class A  
\_\_\_ -GHPD Galvanized Heel-Proof Ductile Grate - Class B  
\_\_\_ -GHPDE Galvanized Heel-Proof Ductile Grate - Class E  
\_\_\_ -HPD Heel-Proof Ductile Slotted Grate - Class B  
\_\_\_ -HPDE Heel-Proof Ductile Slotted Grate - Class E  
\_\_\_ -HPP Heel-Proof Polyethylene Grate - Class A  
\_\_\_ -RFG Reinforced Galvanized Steel Slotted Grate - Class B  
\_\_\_ -RFGC Reinforced Slotted Galvanized Grate - Class C  
\_\_\_ -RFSC Reinforced Slotted Stainless Steel Grate - Class C  
\_\_\_ -RPG Reinforced Galvanized Perforated Grate - Class B  
\_\_\_ -RPGC Reinforced Perforated Galvanized Grate - Class C  
\_\_\_ -RPGR Reinforced Galvanized Perforated Reverse Punch Anti-Slip Grate - Class B  
\_\_\_ -RPGRC Reinforced Perforated Galvanized Reverse Punch Grate - Class C  
\_\_\_ -RPSC Reinforced Perforated Stainless Steel Grate - Class C  
\_\_\_ -RPSRC Reinforced Perforated Stainless Steel Reverse Punch Grate - Class C  
\_\_\_ -SC Fabricated Stainless Solid Cover - Class A

**Miscellaneous Options**

\_\_\_ -VP Vandal-Proof Lockdown  
\_\_\_ -RC Rebar Clip

**Decorative Grate Options (Load Classifications are per DIN EN1433)**

\_\_\_ -BCD Bronze Circular Decorative Grate - Class A  
\_\_\_ -BDD Bronze Diagonal Decorative Grate - Class A  
\_\_\_ -DCD Ductile Iron Circular Decorative Grate - Class C  
\_\_\_ -DDD Ductile Iron Diagonal Decorative Grate - Class A  
\_\_\_ -DOG Ductile Iron Decorative Grate - Class A  
\_\_\_ -DTW Decorative Tidal Wave Grate, Ductile Iron - Class C  
\_\_\_ -DWV Ductile Wave Decorative Grate - Class A  
\_\_\_ -HPB Heel-Proof Bronze Slotted Grate - Class A  
\_\_\_ -HPS Heel-Proof Stainless Steel Slotted Grate - Class A  
\_\_\_ -SBG Stainless Steel Bar Grate - Class E  
\_\_\_ -SCD Stainless Steel Circular Decorative Grate - Class B  
\_\_\_ -SDD Stainless Steel Diagonal Decorative Grate - Class B  
\_\_\_ -SMG Stainless Steel Mesh Screen Grate - Class B  
\_\_\_ -SOG Stainless Steel Decorative Grate - Class B

**MADE in the U.S.A. (Load Classifications are per DIN EN1433)**

\_\_\_ -AWG Aluminum Wire Grate - Class A  
\_\_\_ -BDE-USA Black Acid Resistant Epoxy Coated Ductile Grate - Class E  
\_\_\_ -DCE-USA Solid Cover, Dura-Coated Ductile Iron - Class E  
\_\_\_ -DGC-USA Ductile Iron Slotted Grate - Class C  
\_\_\_ -DGE-USA Ductile Iron Slotted Grate - Class E  
\_\_\_ -FG Fabricated Galvanized Steel Slotted Grate - Class A  
\_\_\_ -FS Fabricated Stainless Steel Slotted Grate - Class A  
\_\_\_ -GDC-USA Galvanized Ductile Slotted Grate - Class C  
\_\_\_ -GDE-USA Galvanized Ductile Slotted Grate - Class E  
\_\_\_ -GHPDE-USA Galvanized Heel-Proof Ductile Grate - Class E  
\_\_\_ -GMG Galvanized Mesh Screen Grate - Class B  
\_\_\_ -HPDE-USA Heel-Proof Ductile Slotted Grate - Class E  
\_\_\_ -PPC Plastic Perforated Grate - Class A  
\_\_\_ -PG Perforated Galvanized Steel Grate - Class A  
\_\_\_ -PGR Galvanized Perforated Reverse Punch Anti-Slip ADA Grate - Class A  
\_\_\_ -PS Perforated Stainless Steel Grate - Class A

**Decorative MADE in the U.S.A. (Load Classifications are per DIN EN1433)**

\_\_\_ -BZ Bronze Decorative Grate - Class A  
\_\_\_ -NBZ-USA Nickel Bronze Decorative Grate - Class A  
\_\_\_ -PDE-USA Ductile Iron Perforated ADA Grate - Class E  
\_\_\_ -PSR Perforated Stainless Steel Raised Grate - Class A  
\_\_\_ -SWG Stainless Steel Wire Grate - Class A

\* Regularly furnished unless otherwise specified.

**Zurn Industries, LLC | Specification Drainage Operation**

1801 Pittsburgh Avenue, Erie, PA U.S.A. 16502 · Ph. 855-663-9876, Fax 814-454-7929

In Canada | **Zurn Industries Limited**

3544 Nashua Drive, Mississauga, Ontario L4V 1L2 · Ph. 905-405-8272, Fax 905-405-1292

[www.zurn.com](http://www.zurn.com)

Rev. G

Date: 07/23/14

C.N. No. 131265

Prod. | Dwg. No. Z706