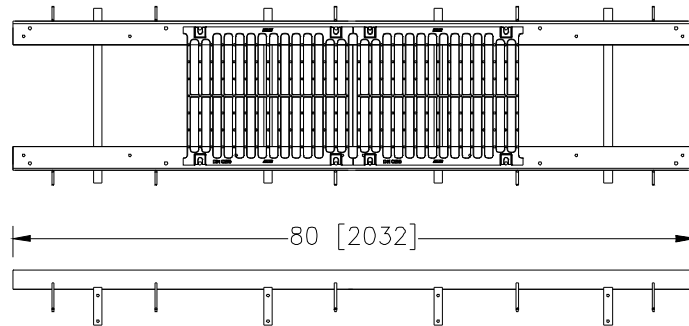
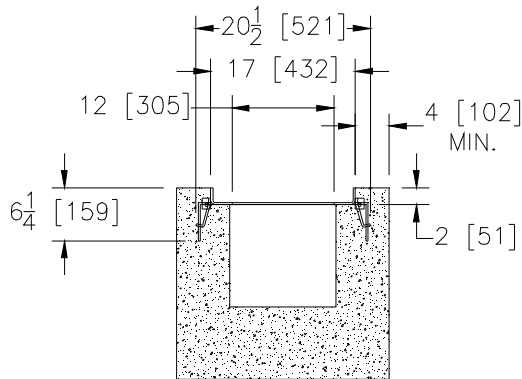


**Z717****17 [432] WIDE FRAME AND GRATE SYSTEM****SPECIFICATION SHEET****TAG** _____

Dimensional Data (inches and [mm]) are Subject to Manufacturing Tolerances and Change Without Notice



SPECIFYING ENGINEER IS RESPONSIBLE FOR
CONCRETE ENCASEMENT AND REINFORCING
BASED UPON APPLICATION AND LOCAL
CODES

ENGINEERING SPECIFICATION: Zurn Z717

Frame and Grate System is 80" [2032mm] long, 17" [432mm] wide reveal and has a 12" [305 mm] clear opening. Clips are attached to the frame to accommodate vertical re-bar for positioning and anchoring purposes. Frame will mechanically lock into the concrete surround every 10" [254mm] and will be provided with the standard DGC grate, Zurn 16-1/4" [413mm] wide Ductile Iron Slotted Grate, which locks down to the frame with 4 contiguous bolt anchors per grate. Ductile Iron conforms to ASTM specification A536-84, Grade 80-55-06. Ductile Iron grate is rated class C per the DIN EN1433 top load classifications. Supplied in 20" [608mm] nominal lengths with 63/64" [25mm] wide slots, and 1-3/4" [44mm] bearing depth. Grate has an open area of 86.7 sq. in. per ft. [183515 sq. mm per meter]. The 1/4" [6mm] thick Carbon Steel Frame Assembly conforms to ASTM specification A36 with 10 - 4" [102mm] long concrete anchors per 80" [2032mm]. The frame is supplied with a powder coated finish. Frames are produced in the USA.

PREFIX OPTIONS (Check/specify appropriate options)

___ Z 80 [2032] Heavy-Duty Frame with Anchor Studs*

SUFFIX OPTIONS (Check/specify appropriate options)**Frame Options**

___ -CBF Black Acid Resistant Coated Top Frame
___ -GFA Galvanized Frame Assembly
___ -SF Type 304 Stainless Steel Top Frame (316 By Request)

Grate Options

___ -BDC Black Acid Resistant Epoxy Coated Grate - Class C
___ -BDF Black Acid Resistant Epoxy Coated Grate - Class F
___ -DCC Ductile Iron Solid Cover-Class C
___ -DCE Ductile Iron Solid Cover-Class E
___ -DGC Ductile Iron Slotted Grate-Class C*
___ -DGF Ductile Iron Slotted Grate-Class F
___ -GDC Galvanized Ductile Iron Grate-Class C
___ -GDF Galvanized Ductile Iron Grate - Class F
___ -GG Fiberglass Grate
___ -HPD Heel-Proof Longitudinal Ductile Iron Grate - Class C

Miscellaneous Options

___ -RC Rebar Clip (Set of 2)
___ -VP Vandal-Proof Lockdown Assembly

MADE in the U.S.A.

___ -ADA-USA Meets Americans with Disabilities Act Requirements - Class C
___ -BDC-USA Black Acid Resistant Epoxy Coated Grate - Class C
___ -BDF-USA Black Acid Resistant Epoxy Coated Grate - Class F
___ -DGC-USA Ductile Iron Slotted Grate-Class C
___ -DGF-USA Ductile Iron Slotted Grate-Class F
___ -GADA-USA Galvanized Ductile ADA Slotted Grate - Class C
___ -GDC-USA Galvanized Ductile Iron Grate-Class C
___ -GDF-USA Galvanized Ductile Iron Grate - Class F

* Regularly furnished unless otherwise specified.

Zurn Industries, LLC | Specification Drainage Operation

1801 Pittsburgh Avenue, Erie, PA U.S.A. 16502 · Ph. 855-663-9876, Fax 814-454-7929

In Canada | **Zurn Industries Limited**

3544 Nashua Drive, Mississauga, Ontario L4V 1L2 · Ph. 905-405-8272, Fax 905-405-1292

www.zurn.com

Rev. J

Date: 09/06/2017

C.N. No. 137674

Prod. | Dwg. No. Z717