

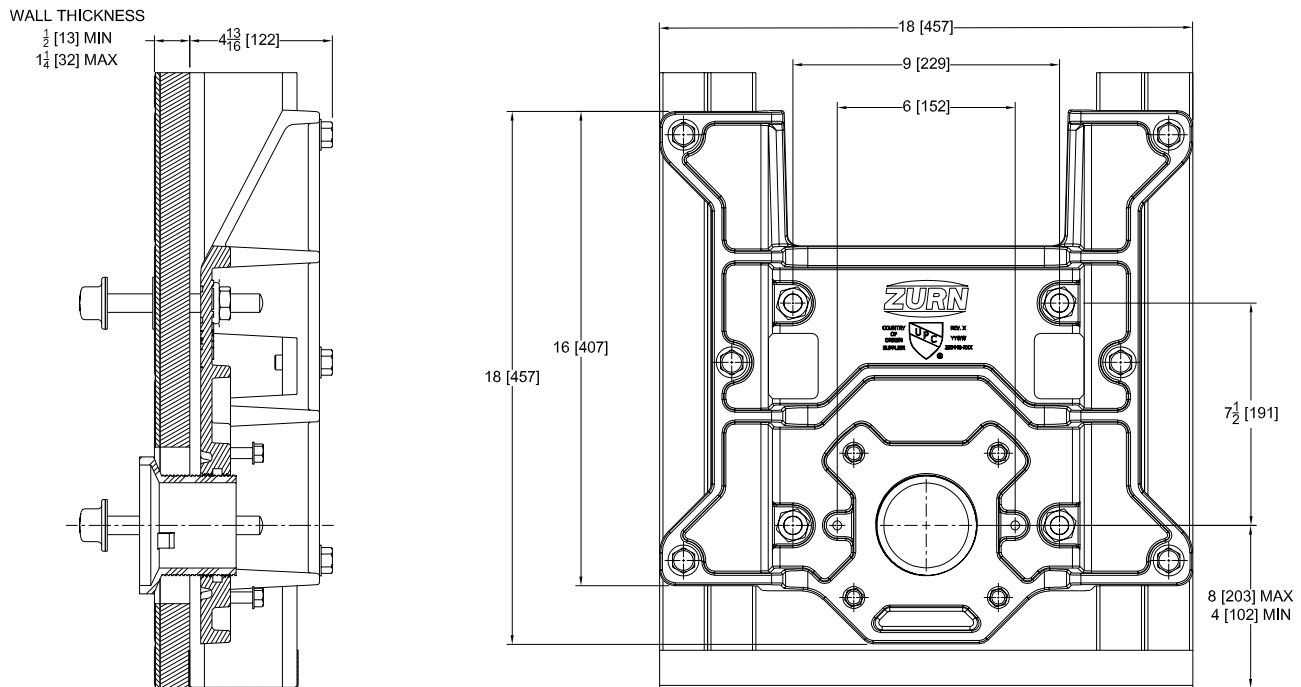


ZPWC1 ZURN POD PRO STUD SUPPORTED WATER CLOSET CARRIER

SPECIFICATION SHEET

TAG _____

Design and Dimensional Data (inches and [mm]) are Subject to Manufacturing Tolerances and Change Without Notice



ENGINEERING SPECIFICATION: ZURN ZPWC1

ZPWC1 ZURN POD PRO stud mounted horizontal or vertical siphon jet water closet carrier system comes with high performance waterway and 4" [102mm] no-hub connection. System includes a stud mounted universal faceplate designed for both wall mount and floor mount back outlet fixtures. Assembly also comes standard with fixture bolts, trim, bonded "Neo-Seal" gasket, and ABS adjustable 3" [76mm] dia. coupling intended for 1/2" [13mm] to 1-1/4" [32mm] finished wall thickness designed to increase flow velocity and line carry. ZPWC1 system has been load tested and rated up to a 500 lbs. [227 kg] static load rating to ASME A112.6.2-2017 when assembled to 18 Gauge 3-5/8" steel studs per the ZPWC1 installation instructions.

TRIM OPTIONS

____ ZPWC1	Wall Mount Bowl Trim*
____ ZPWC1-FMBO	Floor Mount Back Outlet Bowl Trim

FITTING OPTIONS

____ -NL4	4 [102] No-Hub Left Hand Horizontal Cast Iron Fitting
____ -NR4	4 [102] No-Hub Right Hand Horizontal Cast Iron Fitting
____ -NV4	4 [102] No-Hub Vertical Cast Iron Fitting
____ -CI3	3 [76] No-Hub Universal Cast Iron Adapter
____ -CI4	4 [102] No-Hub Universal Cast Iron Adapter
____ -PV3	3 [76] Solvent Weld Universal PVC Adapter
____ -PV4	4 [102] Solvent Weld Universal PVC Adapter

SUFFIXES

____ -AT	Rough In Height Adjustment Tool	Qty: ____
____ -CG	Coupling Cut Guide	Qty: ____

Structural Steel Wall Stud Requirements

Gauge min	Depth in [mm]	Width in [mm]	Lip Length min in [mm]
18	3-5/8 [92]	1-5/8 [41]	1/2 [13]
Conforms to AISI S240 and/or ASTM C955			

* Regularly furnished unless otherwise specified

⚠ **WARNING:** Cancer and Reproductive Harm - www.P65Warnings.ca.gov⚠ **ADVERTENCIA:** Cáncer y daño reproductivo - www.P65Warnings.ca.gov⚠ **AVERTISSEMENT:** Cancer et effets néfastes sur la reproduction - www.P65Warnings.ca.gov

Zurn Industries, LLC | Specification Drainage Operation
1801 Pittsburgh Avenue, Erie, PA 16502, Ph. 855.663.9876

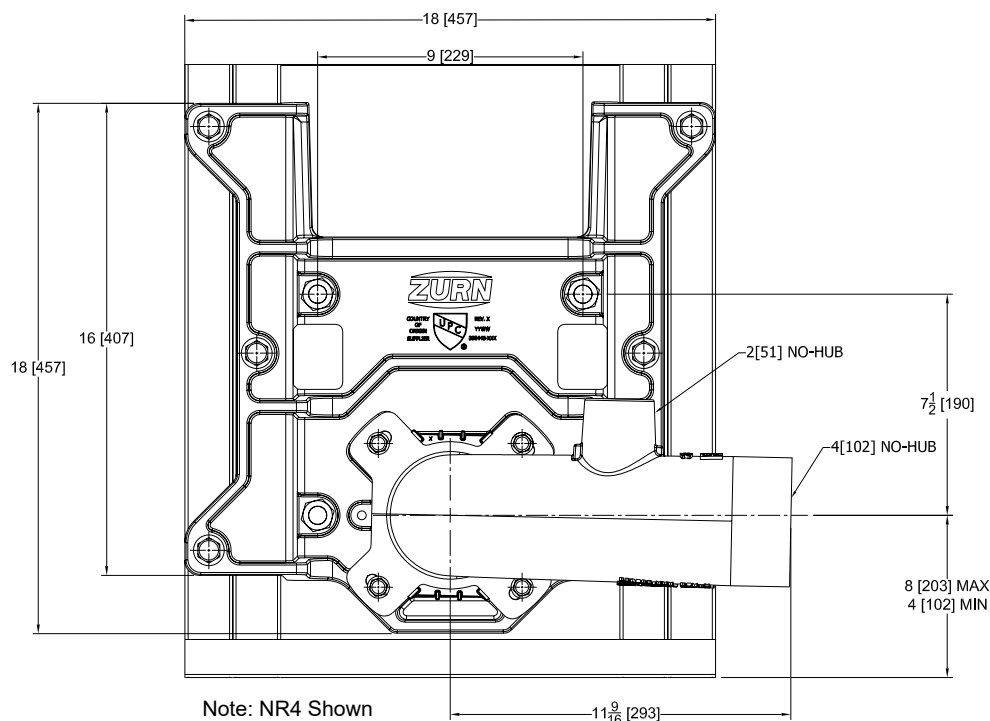
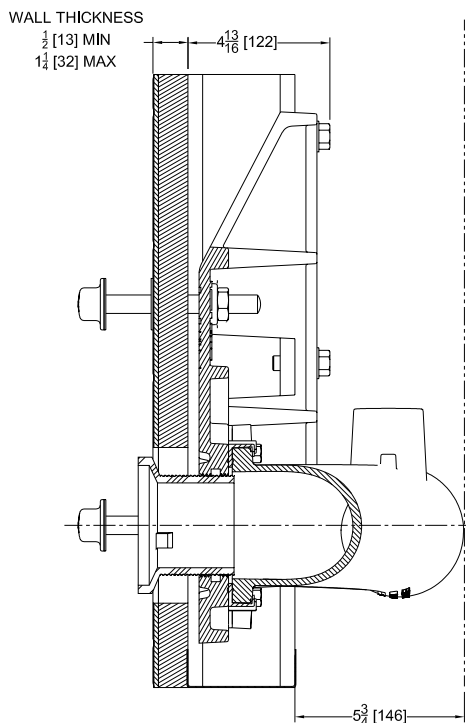
In Canada | Zurn Industries Limited
7900 Goreway Drive, Unit 10, Brampton, Ontario L6T 5W6, Ph. 877.892.5216

www.zurn.com

Rev. -
Date: 3/28/2023
C.N. No. 144779
Patent zurn.com/patents
Prod. | Dwg. No. ZPWC1

Page 1 of 5

Design and Dimensional Data (inches and [mm]) are Subject to Manufacturing Tolerances and Change Without Notice



ENGINEERING SPECIFICATION: ZURN ZPWC1-NL4/NR4

ZPWC1 ZURN POD PRO stud mounted horizontal siphon jet water closet carrier system comes with high performance waterway and 4" [102mm] no-hub connection. System includes a horizontal Dura-Coated cast iron main fitting with hydro-mechanically optimized sweep 2"[51mm] no-hub vent, labor saving gasket, and stud mounted universal faceplate designed for both wall mount and floor mount back outlet fixtures. Assembly also comes standard with fixture bolts, trim, bonded "Neo-Seal" gasket, and ABS adjustable 3" [76mm] dia. coupling intended for 1/2" [13mm] to 1-1/4" [32mm] finished wall thickness designed to increase flow velocity and line carry. ZPWC1 system has been load tested and rated up to a 500 lbs. [227 kg] static load rating to ASME A112.6.2-2017 when assembled to 18 Gauge 3-5/8" steel studs per the ZPWC1 installation instructions.

TRIM OPTIONS

_____ZPWC1	Wall Mount Bowl Trim*
_____ZPWC1-FMBO	Floor Mount Back Outlet Bowl Trim

FITTING OPTIONS

_____ -NL4	4 [102] No-Hub Left Hand Horizontal Cast Iron Fitting
_____ -NR4	4 [102] No-Hub Right Hand Horizontal Cast Iron Fitting

SUFFIXES

____-AT Rough In Height Adjustment Tool Qty: ____
____-CG Coupling Cut Guide Qty: ____

Structural Steel Wall Stud Requirements			
Gauge min	Depth in [mm]	Width in [mm]	Lip Length min in [mm]
18	3-5/8 [92]	1-5/8 [41]	1/2 [13]
Conforms to AISI S240 and/or ASTM C955			

* Regularly furnished unless otherwise specified

⚠ WARNING: Cancer and Reproductive Harm - www.P65Warnings.ca.gov

⚠ ADVERTENCIA: Cáncer y daño reproductivo - www.P65Warnings.ca.gov

⚠️ AVERTISSEMENT: Cancer et effets néfastes sur la reproduction - www.P65Warnings.ca.gov

Zurn Industries, LLC | Specification Drainage Operation
1801 Pittsburgh Avenue, Erie, PA 16502, Ph. 855.663.9876

In Canada | Zurn Industries Limited
7900 Goreway Drive, Unit 10, Brampton, Ontario L6T 5W6, Ph. 877.892.5216

www.zurn.com

Rev.	-
Date:	3/28/2023
C.N. No.	144779
Patent	zurn.com/patents
Prod. Dwg. No.	ZPWC1

Page 2 of 5



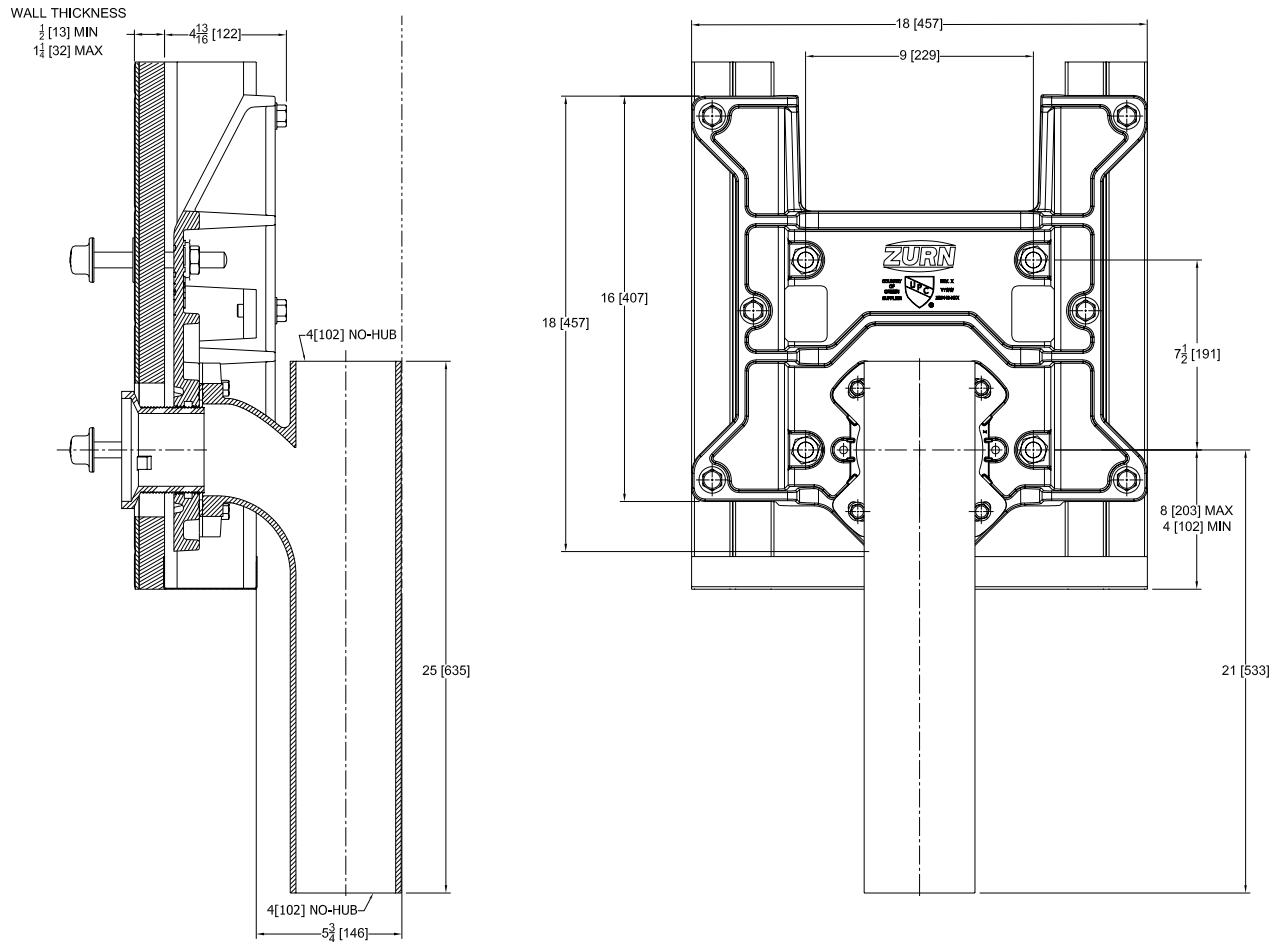
ZPWC1-NV4

ZURN POD PRO STUD SUPPORTED WATER CLOSET CARRIER WITH VERTICAL CAST IRON FITTING

SPECIFICATION SHEET

TAG _____

Design and Dimensional Data (inches and [mm]) are Subject to Manufacturing Tolerances and Change Without Notice



ENGINEERING SPECIFICATION: ZURN ZPWC1-NV4

ZPWC1 ZURN POD PRO stud mounted vertical siphon jet water closet carrier system comes with high performance waterway and 4" [102mm] no-hub connection. System includes a vertical Dura-Coated cast iron main fitting with hydro-mechanically optimized sweep, labor saving gasket, and stud mounted universal faceplate designed for both wall mount and floor mount back outlet fixtures. Assembly also comes standard with fixture bolts, trim, bonded "Neo-Seal" gasket, and ABS adjustable 3" [76mm] dia. coupling intended for 1/2" [13mm] to 1-1/4" [32mm] finished wall thickness designed to increase flow velocity and line carry. ZPWC1 system has been load tested and rated up to a 500 lbs. [227 kg] static load rating to ASME A112.6.2-2017 when assembled to 18 Gauge 3-5/8" steel studs per the ZPWC1 installation instructions.

TRIM OPTIONS

___ ZPWC1	Wall Mount Bowl Trim*
___ ZPWC1-FMBO	Floor Mount Back Outlet Bowl Trim

SUFFIXES

___ -AT	Rough In Height Adjustment Tool	Qty: ___
___ -CG	Coupling Cut Guide	Qty: ___

Structural Steel Wall Stud Requirements			
Gauge min	Depth in [mm]	Width in [mm]	Lip Length min in [mm]
18	3-5/8 [92]	1-5/8 [41]	1/2 [13]
Conforms to AISI S240 and/or ASTM C955			

* Regularly furnished unless otherwise specified

⚠ **WARNING:** Cancer and Reproductive Harm - www.P65Warnings.ca.gov⚠ **ADVERTENCIA:** Cáncer y daño reproductivo - www.P65Warnings.ca.gov⚠ **AVERTISSEMENT:** Cancer et effets néfastes sur la reproduction - www.P65Warnings.ca.gov

Zurn Industries, LLC | Specification Drainage Operation
1801 Pittsburgh Avenue, Erie, PA 16502, Ph. 855.663.9876

In Canada | Zurn Industries Limited
7900 Goreway Drive, Unit 10, Brampton, Ontario L6T 5W6, Ph. 877.892.5216

www.zurn.com

Rev. -
Date: 3/28/2023
C.N. No. 144779
Patent zurn.com/patents
Prod. | Dwg. No. ZPWC1

Page 3 of 5

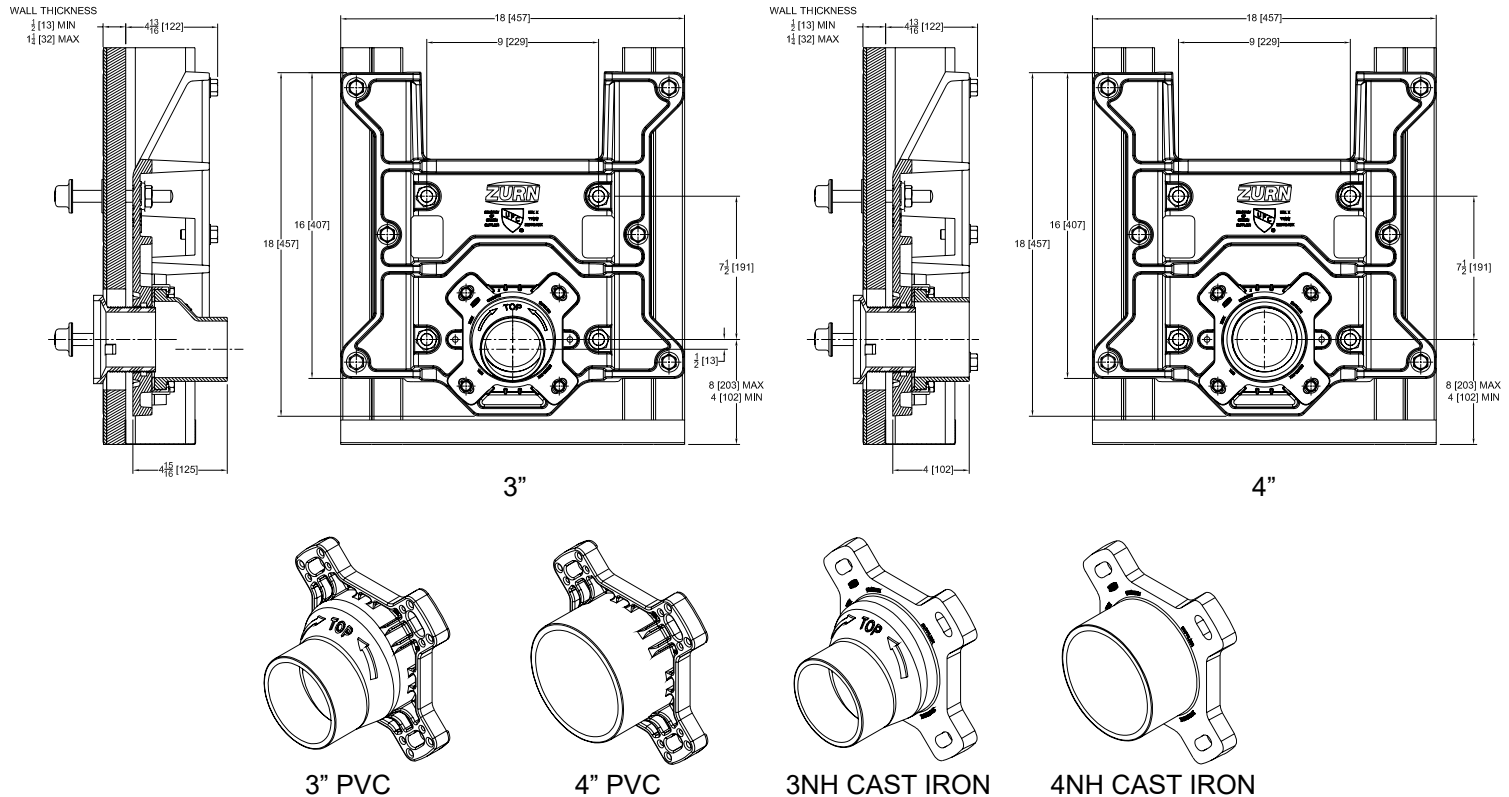


ZPWC1-CI3/CI4/PV3/PV4 ZURN POD PRO STUD SUPPORTED WATER CLOSET CARRIER WITH FITTING ADAPTER

SPECIFICATION SHEET

TAG _____

Design and Dimensional Data (inches and [mm]) are Subject to Manufacturing Tolerances and Change Without Notice



ENGINEERING SPECIFICATION: ZURN ZPWC1-CI3/CI4/PV3/PV4

ZPWC1 ZURN POD PRO stud mounted horizontal or vertical siphon jet water closet carrier system comes with high performance waterway 3" or 4" [76mm or 102mm] no-hub or solvent weld connection. System includes a cast iron or PVC fitting adapter, labor saving gasket, and stud mounted universal faceplate designed for both wall mount and floor mount back outlet fixtures. Assembly also comes standard with fixture bolts, trim, bonded "Neo-Seal" gasket, and ABS adjustable 3" [76mm] dia. coupling intended for 1/2" [13mm] to 1-1/4" [32mm] finished wall thickness designed to increase flow velocity and line carry. ZPWC1 system has been load tested and rated up to a 500 lbs. [227 kg] static load rating to ASME A112.6.2-2017 when assembled to 18 Gauge 3-5/8" steel studs per the ZPWC1 installation instructions.

TRIM OPTIONS

- ____ ZPWC1 Wall Mount Bowl Trim*
____ ZPWC1-FMBO Floor Mount Back Outlet Bowl Trim

FITTING OPTIONS

- ____ -CI3 3 [76] No-Hub Universal Cast Iron Adapter
____ -CI4 4 [102] No-Hub Universal Cast Iron Adapter
____ -PV3 3 [76] Solvent Weld Universal PVC Adapter
____ -PV4 4 [102] Solvent Weld Universal PVC Adapter

Structural Steel Wall Stud Requirements			
Gauge min	Depth in [mm]	Width in [mm]	Lip Length min in [mm]
18	3-5/8 [92]	1-5/8 [41]	1/2 [13]
Conforms to AISI S240 and/or ASTM C955			

SUFFIXES

- ____ -AT Rough In Height Adjustment Tool Qty: ____
____ -CG Coupling Cut Guide Qty: ____

* Regularly furnished unless otherwise specified

⚠ **WARNING:** Cancer and Reproductive Harm - www.P65Warnings.ca.gov⚠ **ADVERTENCIA:** Cáncer y daño reproductivo - www.P65Warnings.ca.gov⚠ **AVERTISSEMENT:** Cancer et effets néfastes sur la reproduction - www.P65Warnings.ca.gov

Zurn Industries, LLC | Specification Drainage Operation
1801 Pittsburgh Avenue, Erie, PA 16502, Ph. 855.663.9876

In Canada | Zurn Industries Limited
7900 Goreway Drive, Unit 10, Brampton, Ontario L6T 5W6, Ph. 877.892.5216

www.zurn.com

Rev. -
Date: 3/28/2023
C.N. No. 144779
Patent zurn.com/patents
Prod. | Dwg. No. ZPWC1

Page 4 of 5



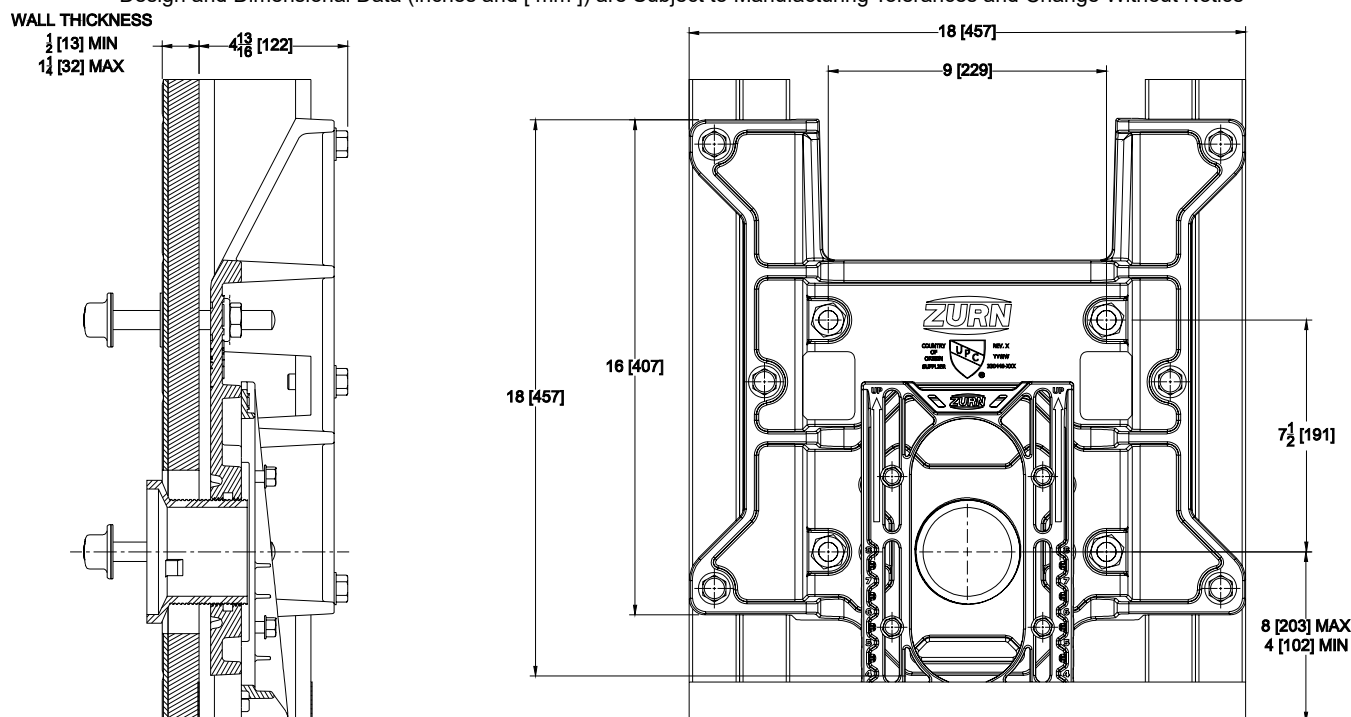
ZPWC1-AT

ZURN POD PRO STUD SUPPORTED WATER CLOSET CARRIER WITH ROUGH IN HEIGHT ADJUSTMENT TOOL

SPECIFICATION SHEET

TAG _____

Design and Dimensional Data (inches and [mm]) are Subject to Manufacturing Tolerances and Change Without Notice



ENGINEERING SPECIFICATION: ZURN ZPWC1-AT

ZPWC1 ZURN POD PRO stud mounted horizontal or vertical siphon jet water closet carrier system comes with high performance waterway and 4" [102mm] no-hub connection. System includes a horizontal or vertical Dura-Coated cast iron main fitting with hydro-mechanically optimized sweep, labor saving gasket, and stud mounted universal faceplate designed for both wall mount and floor mount back outlet fixtures. Assembly also comes standard with fixture bolts, trim, bonded "Neo-Seal" gasket, and ABS adjustable 3" [76mm] dia. coupling intended for 1/2" [13mm] to 1-1/4" [32mm] finished wall thickness designed to increase flow velocity and line carry. This assembly also includes the rough in height adjustment tool designed to help hold the faceplate in place at the desired rough in height to provide a quick and easy installation. ZPWC1 system has been load tested and rated up to a 500 lbs. [227 kg] static load rating to ASME A112.6.2-2017 when assembled to 18 Gauge 3-5/8" steel studs per the ZPWC1 installation instructions.

TRIM OPTIONS

___ ZPWC1	Wall Mount Bowl Trim*
___ ZPWC1-FMBO	Floor Mount Back Outlet Bowl Trim

FITTING OPTIONS

___ -NL4	4 [102] No-Hub Left Hand Horizontal Cast Iron Fitting
___ -NR4	4 [102] No-Hub Right Hand Horizontal Cast Iron Fitting
___ -NV4	4 [102] No-Hub Vertical Cast Iron Fitting
___ -CI3	3 [76] No-Hub Universal Cast Iron Adapter
___ -CI4	4 [102] No-Hub Universal Cast Iron Adapter
___ -PV3	3 [76] Solvent Weld Universal PVC Adapter
___ -PV4	4 [102] Solvent Weld Universal PVC Adapter

SUFFIXES

___ -CG	Coupling Cut Guide	Qty: ___
---------	--------------------	----------

* Regularly furnished unless otherwise specified

⚠ **WARNING:** Cancer and Reproductive Harm - www.P65Warnings.ca.gov⚠ **ADVERTENCIA:** Cáncer y daño reproductivo - www.P65Warnings.ca.gov⚠ **AVERTISSEMENT:** Cancer et effets néfastes sur la reproduction - www.P65Warnings.ca.gov

Zurn Industries, LLC | Specification Drainage Operation
1801 Pittsburgh Avenue, Erie, PA 16502, Ph. 855.663.9876

In Canada | Zurn Industries Limited
7900 Goreway Drive, Unit 10, Brampton, Ontario L6T 5W6, Ph. 877.892.5216

www.zurn.com

Structural Steel Wall Stud Requirements			
Gauge min	Depth in [mm]	Width in [mm]	Lip Length min in [mm]
18	3-5/8 [92]	1-5/8 [41]	1/2 [13]
Conforms to AISI S240 and/or ASTM C955			

Rev. -
Date: 3/28/2023
C.N. No. 144779
Patent zurn.com/patents
Prod. | Dwg. No. ZPWC1

Page 5 of 5