

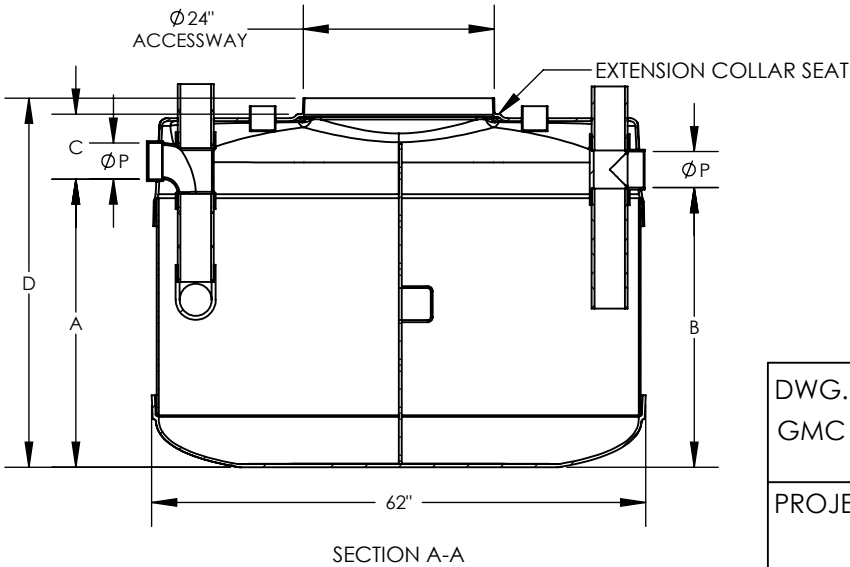
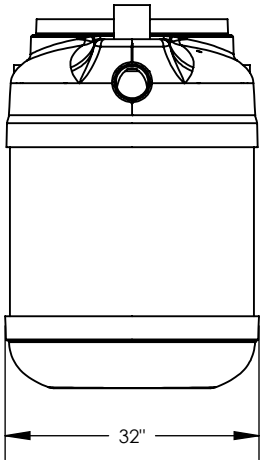
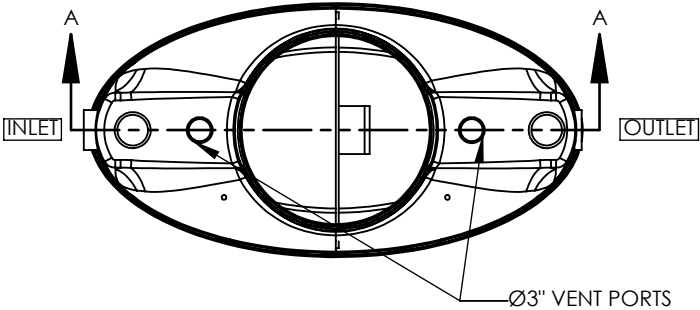
NOTES:

- 1. FOR GRAVITY APPLICATIONS ONLY.
- 2. ALL PROCEPTOR UNITS ARE MANUFACTURED WITH FIBERGLASS REINFORCED PLASTICS. PHYSICAL CHARACTERISTICS AND THICKNESS: POLYESTER RESIN AND E GLASS MINIMUM THICKNESS 1/4" WALL AND 3/8" TOP AND BOTTOM BOWLS.
- 3. ALL PROCEPTOR UNITS ARE TO BE INSTALLED IN ACCORDANCE WITH THE MANUFACTURER'S INSTALLATION INSTRUCTION.
- 4. STANDARD PIPING IS SCH. 40 PVC.
- 5. GMC/OMC 500 - 3000 UNITS COME STANDARD WITH 4" INLET AND OUTLET (OTHER PIPE SIZE OPTIONS AVAILABLE ON REQUEST).
- 6. EXTENSION COLLAR TO BE ORDERED TO MEET FINISHED GRADE, CUT ON SITE FOR FINAL ADJUSTMENT AND CAULKED WITH SIKAFLEX BY CONTRACTOR FOR WATERTIGHT SEAL.
- 7. COVERS AVAILABLE FOR H20 TRAFFIC LOADING, PEDESTRIAN LOADING OR ABOVE GROUND INSTALLATION.
- 8. CONSULT GREEN TURTLE FOR OTHER SIZES.
- 9. LIFETIME WARRANTY AGAINST LEAKS, AND STRUCTURAL FAILURE DUE TO MANUFACTURING DEFECTS.

CONSULT LOCAL AUTHORITIES FOR MINIMUM SIZE OF SEPARATORS

PROCEPTOR NOMINAL TANK DIMENSIONS (INCHES)

MODEL	VOLUME (US GAL)	GREASE CAPACITY (US GAL)	SOLIDS CAPACITY (US GAL)	PIPE SIZE (P)	INLET (A)	OUTLET (B)	BURIAL (C)	HEIGHT (D)	SKU
GMC 50	50	18	17	4	12	11	8	24	10000000
GMC 100	100	42	23	4	20	19	8	32	10100000
				6	20	19	9	33	10100100
GMC 150	200	90	72	4	33	32	8	45	10200000
				6	33	32	9	46	10200100
GMC 200	200	90	72	4	36	35	8	48	10300000
				6	36	35	9	49	10300100
GMC 250	250	119	91	4	44	43	8	56	10400000
				6	44	43	9	57	10400100
GMC 300	300	156	103	4	52	51	8	64	10500000
				6	52	51	9	65	10500100



TANKS MAY NOT BE EXACTLY AS SHOWN

DWG. TITLE:
GMC 50-300 S24M

PROJECT:

SIZE A DRAWING NOT TO SCALE



DWG #: 18-4705-S REV. 3