

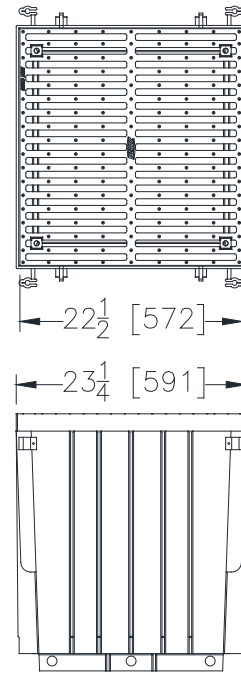
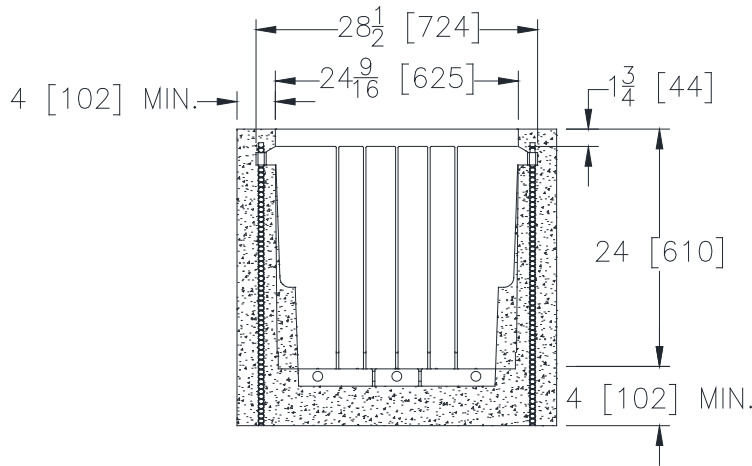


# Z887-24-HDG

23-1/4 [591] WIDE REVEAL BY 24-9/16 [624] LONG CATCH BASIN WITH HEAVY DUTY GALVANIZED FRAME

Design and Dimensional Data (inches and [ mm ]) are Subject to Manufacturing Tolerances and Change Without Notice

SPECIFYING ENGINEER IS RESPONSIBLE FOR CONCRETE ENCASEMENT AND REINFORCING BASED UPON APPLICATION AND LOCAL CODES



NOTE: + Actual Channel length is 20 3/4 [527].

**ENGINEERING SPECIFICATION:** ZURN Z887-24-HDG Catch Basin shall be 23-1/4" [591mm] wide reveal x 24-9/16" [624mm] long and 24" [610mm] deep. Catch basin shall be made of 0% water absorbent High Density Polyethylene (HDPE). Shall mechanically lock into the concrete surround. Basin shall weigh less than 20.0 lbs. [9.1 kg]. Catch basin shall have rebar clips standard to secure basin in its final location. Shall be provided with standard GDC grate. Zurn 22-1/4" [565mm] wide reveal Ductile Iron Slotted Grate conforming to ASTM specification A536- 84, Grade 80-55-06. Ductile Iron grate is rated class C per the DIN EN1433 top load classifications. Supplied in 24" [608mm] nominal lengths with 11/32" [9mm] wide slots, and 1-1/2" [38mm] bearing depth. Grate has an open area of 164 in<sup>2</sup>/ft. [3471 cm<sup>2</sup>/m]. The 1/4" [6mm] thick Heavy-Duty Galvanized Frame Assembly conforms to either ASTM specification A36 or A536-84, with 4 - 4" [102mm] long concrete anchors per basin. The frame is supplied with a powder coated finish. All welds must be performed by a certified welder per ASTM standard AWS D1.1. Frames Shall be produced in the U.S.A.

**PREFIX OPTIONS** (Check/specify appropriate options)

\_\_\_ Z 24" X 24" High Density Polyethylene (HDPE) Catch Basin\*

**SUFFIX OPTIONS** (Check/specify appropriate options)

**Outlet Adapters Add/Each**

- \_\_\_ -E3/U3 3 [76] No-Hub End Outlet
- \_\_\_ -E4/U4 4 [102] No Hub End Outlet
- \_\_\_ -E6/U6 6 [152] No-Hub End Outlet
- \_\_\_ -IA Inlet Adapter (Z886)
- \_\_\_ -IA Inlet Adapter (Z882)

**Miscellaneous Options**

- \_\_\_ -EXT 12 [305] Body Extension
- \_\_\_ -VP Vandal-Proof Lockdown
- \_\_\_ -Y Sediment Bucket
- \_\_\_ -BL High Density Polyethylene (HDPE) System with 3% Carbon Black Additive

**USA Miscellaneous Options**

- \_\_\_ -DB Bottom Dome Strainer

\* Regularly furnished unless otherwise specified.

Frame and Grate Options on Page 2

- ⚠ WARNING:** Cancer and Reproductive Harm - [www.P65Warnings.ca.gov](http://www.P65Warnings.ca.gov)
- ⚠ ADVERTENCIA:** Cáncer y daño reproductivo - [www.P65Warnings.ca.gov](http://www.P65Warnings.ca.gov)
- ⚠ AVERTISSEMENT:** Cancer et effets néfastes sur la reproduction - [www.P65Warnings.ca.gov](http://www.P65Warnings.ca.gov)



# Z887-24-HDG

23-1/4 [591] WIDE REVEAL BY 24-9/16 [624] LONG CATCH  
BASIN WITH HEAVY DUTY GALVANIZED FRAME

SPECIFICATION SHEET

TAG \_\_\_\_\_

Design and Dimensional Data (inches and [ mm ]) are Subject to Manufacturing Tolerances and Change Without Notice

**Grate Options** (Load Classifications are per DIN EN1433)

- \_\_\_ -BDC      Black Acid Resistant Epoxy Coated Ductile  
                  Grate - Class C
- \_\_\_ -BDE      Black Acid Resistant Epoxy Coated Ductile  
                  Grate - Class E
- \_\_\_ -DCC      Ductile Iron Solid Cover - Class C
- \_\_\_ -DGC      Ductile Iron Slotted Grate - Class C
- \_\_\_ -DGE      Ductile Iron Slotted Grate - Class E
- \_\_\_ -DGF      Ductile Iron Slotted Grate - Class F
- \_\_\_ -GDC      Galvanized Ductile Slotted Grate - Class C\*
- \_\_\_ -GDE      Galvanized Ductile Slotted Grate - Class E
- \_\_\_ -GDF      Galvanized Ductile Slotted Grate - Class F

\* Regularly furnished unless otherwise specified.

**WARNING:** Cancer and Reproductive Harm - [www.P65Warnings.ca.gov](http://www.P65Warnings.ca.gov)

**ADVERTENCIA:** Cáncer y daño reproductivo - [www.P65Warnings.ca.gov](http://www.P65Warnings.ca.gov)

**AVERTISSEMENT:** Cancer et effets néfastes sur la reproduction - [www.P65Warnings.ca.gov](http://www.P65Warnings.ca.gov)

Zurn Industries, LLC | Specification Drainage Operation  
1801 Pittsburgh Avenue, Erie, PA 16502, Ph. 855.663.9876

In Canada | Zurn Industries Limited  
7900 Goreway Drive, Unit 10, Brampton, Ontario L6T 5W6, Ph. 877.892.5216

[www.zurn.com](http://www.zurn.com)

Rev.	A	Page 2 of 2
Date:	05/28/25	
C.N. No.	146570	
Patent	<a href="http://zurn.com/patents">zurn.com/patents</a>	
Prod.   Dwg. No.	Z887-24-HDG	