



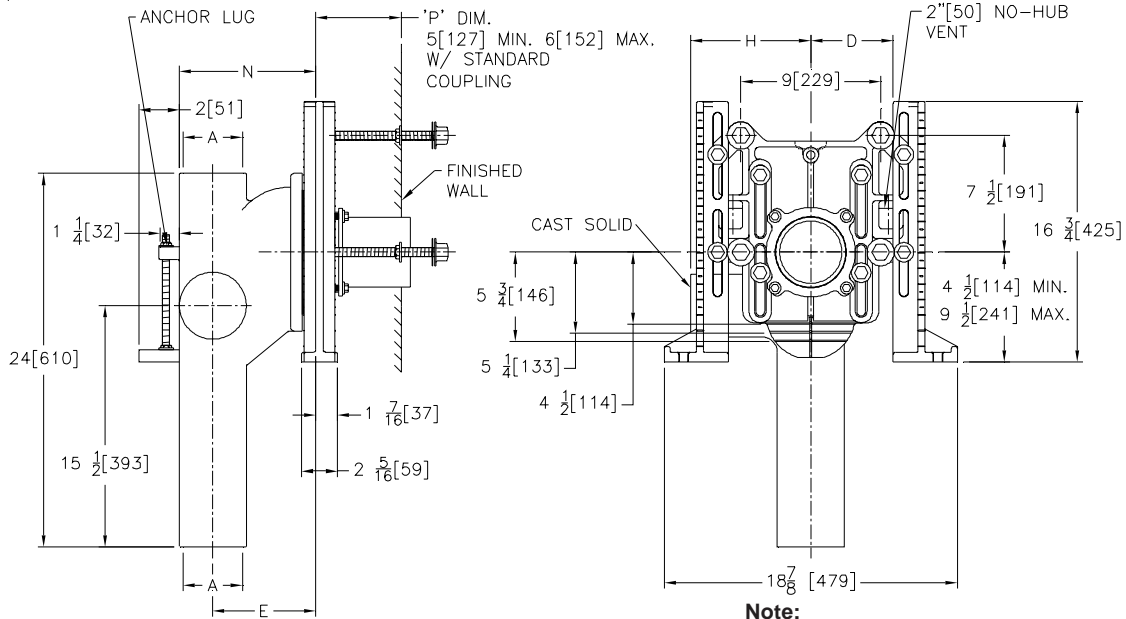
# ZC1204-N

## ADJUSTABLE VERTICAL SIPHON JET-NO-HUB W/ COMPRESSION FIT FACEPLATE

SPECIFICATION SHEET

TAG \_\_\_\_\_

Dimensional Data (inches and [ mm ]) are Subject to Manufacturing Tolerances and Change Without Notice



**Note:**

1. Min. 'P' Dim. Obtainable = 2 [51]
2. 2 [51] No-Hub vent connection regularly furnished on right hand side. Left hand available when specified (Suffix-VL)
3. Auxiliary inlet available right (-JR) or left (-JL) or both sides (-JJ) when specified.
4. Feet bolted to floor using min. 1/2 [13] dia. bolts and back slots on carrier feet.
5. Back anchor foot required for secure installation.

Product No.	Dimensions In Inches					Approx. Wt.Lbs. [kg]
	A	D	E	H	N	
ZC1204-N4	4 [102]	5 [127]	6 5/8 [168]	5 1/2 [140]	8 7/8 [225]	80 [36]
ZC1204-N5	5 [127]	5 1/2 [140]	6 5/8 [168]	6 1/2 [165]	9 3/8 [238]	85 [39]
ZC1204-N6	6 [152]	6 [152]	7 1/8 [181]	6 1/2 [165]	10 3/8 [264]	95 [43]

**ENGINEERING SPECIFICATION: ZURNZC1204-N**

Adjustable, vertical siphon jet water closet "Rigid System" with ( ) size No-Hub connections and ( ) side inlets. Complete with Dura-Coated cast iron right hand, left hand, or double main fitting, with 2 [51] vent, adjustable compression fit faceplate, universal floor mounted foot supports, corrosion resistant adjustable PVC coupling, fixture bolts, trim, and stud protectors. Rear anchor tie down and bonded "Neo-Seal" gasket.

**PRODUCT/DEFINITION**

\_\_\_ ZC1204-N No-Hub Stack, Single Inlet, 2 [51] Right Hand Vent

**PREFIXES**

- \_\_\_ ZC D.C.C.I. System with Compression Fit Faceplate  
 \_\_\_ ZCE D.C.C.I. System with Compression Fit Faceplate & Elongated Fitting.

**SUFFIXES**

- |  |  |
|--|--|
| <p>___ -A Auxiliary Support Assembly<br/>(For P-Dim. Greater than 18 [457])</p> <p>___ -B Blowout Type Fixture Support</p> <p>___ -BC Back Cleanout</p> <p>___ -CL Coupling Length Greater than 12 [152]<br/>(Specify Length Required.)</p> <p>___ -F Floor Mount, Back Outlet Fixture Support</p> <p>___ -G Galvanized Cast Iron</p> <p>___ -JJ Two 2" [51] Auxiliary Inlets</p> <p>___ -JL 2 [51] Left-Hand Auxiliary Inlet</p> <p>___ -JR 2 [51] Right-Hand Auxiliary Inlet</p> <p>___ -M Auxiliary Foot Support (For P-Dim. 10-18 [254-457])</p> <p>___ -VL Left Hand Vent Connection</p> <p>___ -VP Vandal-Proof Trim</p> <p>___ -XI 2 [51] Integral Foot Extension</p> | <p>___ -X3 3 [76] Foot Extension</p> <p>___ -X4 4 [102] Foot Extension</p> <p>___ -12 Carrier Assembly with 12 [305] long Coupling</p> <p>___ -29 Mechanical Test Cap Assembly<br/>(Previously Z1210-29)</p> <p>___ -45 Finishing Frame for Siphon Jet System</p> <p>___ -50 Flush Valve Supply Support for W.C.</p> |
|--|--|

<b>REV.</b>	<b>DATE: 10/10/07</b>	<b>C.N. NO. 97434</b>
<b>DWG. NO. 83485</b>	<b>PRODUCT NO. ZC1204-N</b>	

\*REGULARLY FURNISHED UNLESS OTHERWISE SPECIFIED

ZURN INDUSTRIES, LLC ♦ SPECIFICATION DRAINAGE OPERATION ♦ 1801 Pittsburgh Ave. ♦ Erie, PA 16514

Phone: 814/455-0921 ♦ Fax: 814/454-7929 ♦ World Wide Web: [www.zurn.com](http://www.zurn.com)

In Canada: ZURN INDUSTRIES LIMITED ♦ 3544 Nashua Drive ♦ Mississauga, Ontario L4V1L2 ♦ Phone: 905/405-8272 Fax: 905/405-1292