



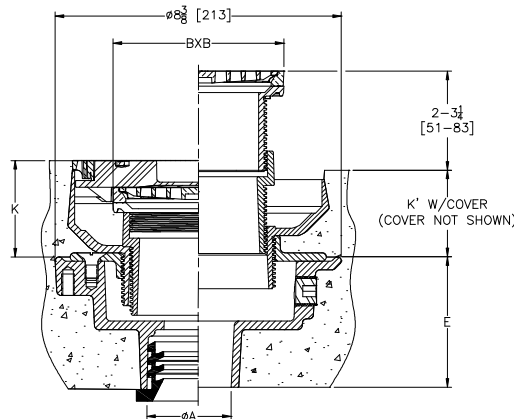
Z415-SZ1-U

BODY ASSEMBLY W/ "TYPE S" STRAINER,
EZ1™ TECHNOLOGY and EXTENSION ADAPTER

SPECIFICATION SHEET

TAG _____

Design and Dimensional Data (inches and [mm]) are Subject to Manufacturing Tolerances and Change Without Notice



Note:
Minimum K Dimension is Only
Possible with -LR Option

Dimension in Inches [mm]						Approx. Wt. Lbs. [kg]	Strainer Open Area Sq. In. [cm²]
A Pipe Size	B X B Strainer Top Size	K		K'			
		Min.	Max.	Min.	Max.		
2, 3 [51, 76]	5 X 5 [127 X 127]	2-1/16 [52]	3-1/4 [83]	2-9/16 [65]	3-3/4 [95]	19 [9]	9 [58]
2, 3, 4 [51-76-102]	6 X 6 [152 X 152]	2-1/8 [54]	3-5/16 [84]	2-5/8 [67]	3-13/16 [97]	22[10]	13[84]
3, 4 [76-102]	8 X 8 [203 X 203]	2-1/2 [64]	3-11/16 [94]	3 [76]	4-3/16 [106]	27[12]	27[174]
6 [152]	8 X 8 [203 X 203]	2-1/2 [64]	3-11/16 [94]	3 [76]	4-3/16 [106]	28[13]	27[174]

ENGINEERING SPECIFICATION:

Zurn Z415-SZ1-U floor and shower drain, Dura-coated cast iron body with bottom outlet, combination invertible membrane clamp and adjustable collar with seepage slots and top assembly, and post pour extension adapter. EZ1™ drainage series is engineered to simplify product installation, comprised of concrete shield, up to 1" [25] of vertical post pour adjustment, pre-packaged shims for tilt correction and integrated self-contained "Type S" nickel bronze light duty, heel proof strainer with rough-in cover for protection during concrete pour.

OPTIONS (Check/specify appropriate options)

PIPE SIZE	(Specify size/type)	OUTLET	'E' BODY HT. DIM.
2, 3, 4 [51, 76, 102]	___ IC	Inside Caulk	4-3/16 [106]
2 [51]	___ IP	Threaded	2-7/16 [62]
3 [76]	___ IP	Threaded	2-3/4 [70]
4 [102]	___ IP	Threaded	2-13/16 [71]
6 [152]	___ IP	Threaded	2-7/8 [73]
2, 3, 4 [51, 76, 102]	___ NH	No-Hub	3-13/16 [97]
2, 3, 4 [51, 76, 102]	___ NL	Neo-Loc	3-7/8 [98]

PREFIXES

___ ZB	D.C.C.I. Body Assembly w/ Polished Bronze Top
___ ZN	D.C.C.I. Body Assembly w/ Polished Nickel Bronze Top*
___ ZS	D.C.C.I. Body Assembly w/ Polished Stainless Steel Top

SUFFIXES

___ -AR	Acid Resisting Epoxy Coated Cast Iron	___ -SR	Stabilizer Ring Assembly for On-Grade Install
___ -EF	3/4 [19] Extension Frame	___ -TC	Neo-Loc Test Cap Gasket
___ -G	Galvanized Cast Iron		(2,3,4 [51,76,102] NL Outlet Only)
___ -LR	Low Rough-In	___ -TSP	Trap Seal Protection Device (Size Matches Drain
___ -P	Trap Primer Connection (1/2* [13] or 3/4 [19])		Outlet Selected) (See Z1072)
___ -SA	Stabilizer Assembly for Sub-Floor Install	___ -UP	1-3/4 [44] Pre-Pour Adjustment Extension Adapter
	(See Z1035)	___ -VP	Vandal-Proof Secured Top
___ -SQ	Stabilizer Q-Deck for Steel Decking Install	___ -Y	Sediment Bucket
	(See Z1035-Q)		

* Regularly furnished unless otherwise specified.

⚠ **WARNING:** Cancer and Reproductive Harm - www.P65Warnings.ca.gov

⚠ **ADVERTENCIA:** Cáncer y daño reproductivo - www.P65Warnings.ca.gov

⚠ **AVERTISSEMENT:** Cancer et effets néfastes sur la reproduction - www.P65Warnings.ca.gov

Zurn Industries, LLC | Specification Drainage Operation
1801 Pittsburgh Avenue, Erie, PA USA 16502, Ph. 855.663.9876

In Canada | Zurn Industries Limited
7900 Goreway Drive, Unit 10, Brampton, Ontario L6T 5W6, Ph. 877.892.5216

www.zurn.com

Rev.	-
Date:	07/08/25
C.N. No.	147013
Patent	zurn.com/patents
Prod. Dwg. No.	Z415-SZ1-U