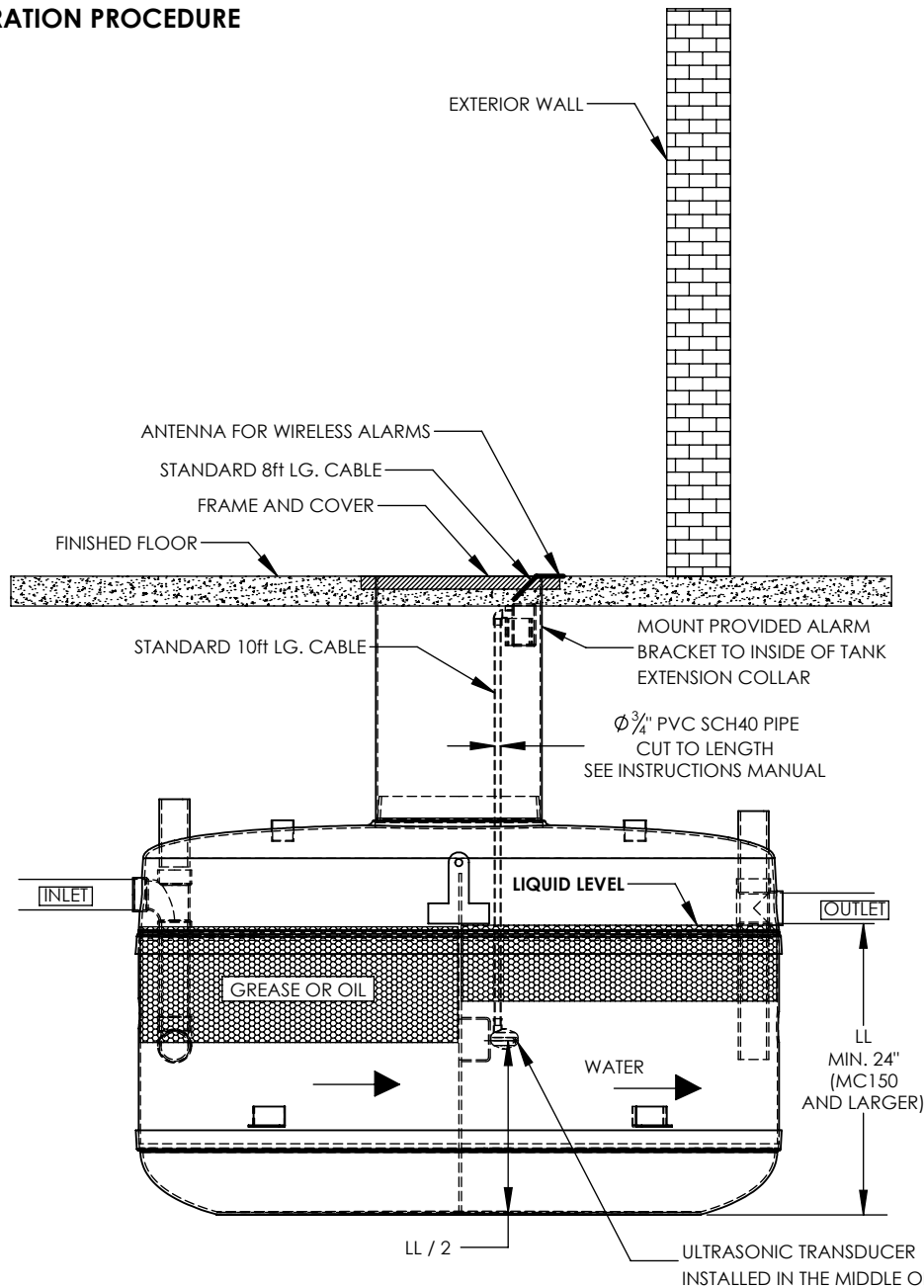


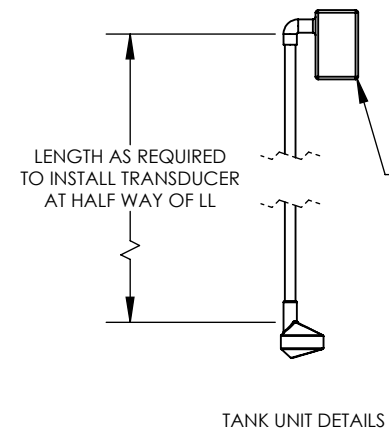
SEE OWNER'S MANUAL FOR CALIBRATION PROCEDURE



1. TANKS INSTALLED IN SERIES (EX. GMC 2000(2)) WILL HAVE ALARM INSTALLED IN THE FIRST TANK OUTLET SIDE
2. SINGLE TANKS (WITH BAFFLE) WILL HAVE ALARM INSTALLED ON THE INLET SIDE (BOTH INLET AND OUTLET INSTALLATION IS ALLOWED BUT GT RECOMMENDS INLET)

ALARM IS SHOWN TO BE INSTALLED ON OUTLET SIDE OF TANK

CALIBRATION AND MONITORING TO BE PERFORMED THROUGH THE PORTAL BY PHONE, LAPTOP, ETC.



G3 IMD TANK UNIT
 G3 GREASEwatch® TANK UNIT INTERCEPTOR MONITORING EQUIPMENT. EACH G3 TANK UNIT TO BE INSTALLED INSIDE OF THE GREASE INTERCEPTOR TO MEASURE THE THICKNESS OF THE TOP GREASE LAYER, BOTTOM SLUDGE LAYER, CHANGE IN LIQUID LEVEL AND WASTEWATER TEMPERATURE INSIDE OF A GREASE INTERCEPTOR. G3 TANK UNIT IS POWERED BY A 3.9V LITHIUM BATTERY AND TRANSMITS DATA VIA CELL FREQUENCY.

ALARM USES CELLULAR FREQUENCY
SKU 4631
INTERNAL PART #G3-4631

DWG. TITLE:
 SMARTPRO WIRELESS
 ALARM G3 OUTLET SIDE
 INSTALLATION

PROJECT:

SIZE A DRAWING NOT TO SCALE



DWG #: 21-5485-S REV. 3