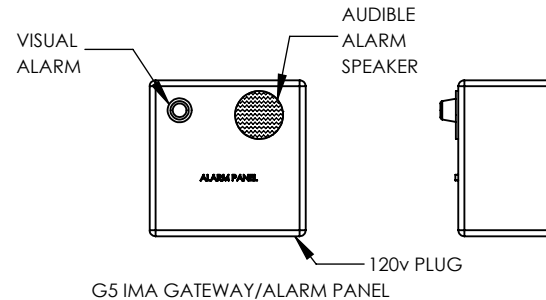
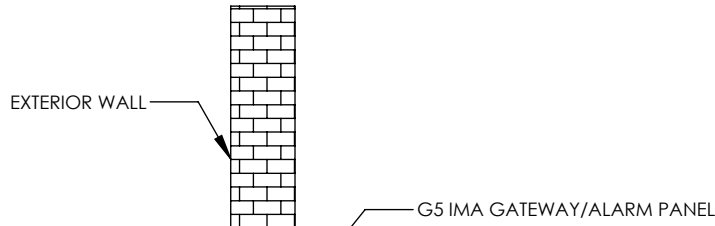
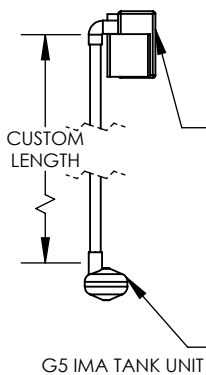


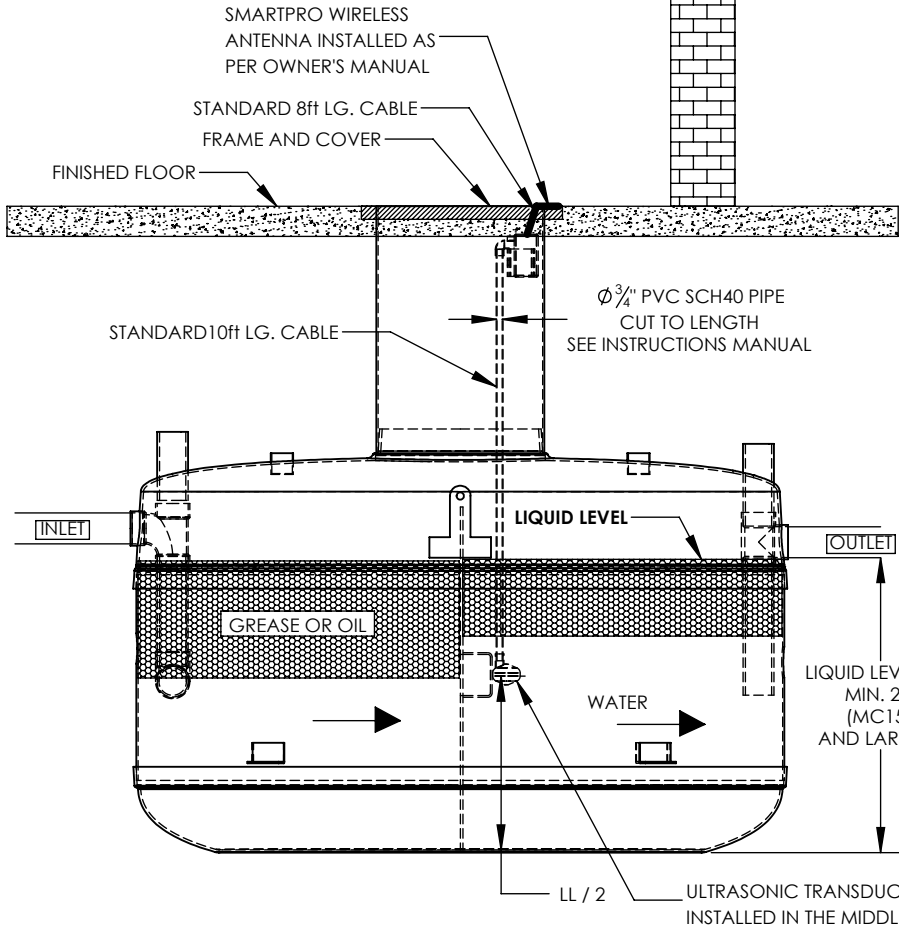
G5 IMA TANK UNIT

G5 GREASEwatch® TANK UNIT INTERCEPTOR MONITORING EQUIPMENT. EACH G5 TANK UNIT TO BE INSTALLED INSIDE OF THE GREASE INTERCEPTOR TO MEASURE THE THICKNESS OF THE TOP GREASE LAYER, BOTTOM SLUDGE LAYER, CHANGE IN LIQUID LEVEL AND WASTEWATER TEMPERATURE INSIDE OF A GREASE INTERCEPTOR. G5 TANK UNIT IS POWERED BY A 3.9v LITHIUM BATTERY AND TRANSMITS DATA TO G5 GATEWAY/ALARM PANEL VIA RADIO FREQUENCY.



G5 IMA GATEWAY/ALARM PANEL

THE G5 GREASEwatch® IMA GATEWAY AND AUDIBLE & VISUAL ALARM PANEL IS TO BE INSTALLED INSIDE OF BUILDING WITHIN RADIO SIGNAL RANGE (APPROX. 300ft LINE OF SIGHT) OF G5 TANK UNIT(S). THE G5 ALARM PANEL RECEIVES DATA FROM THE G5 TANK UNIT(S) VIA RADIO FREQUENCY AND THEN FORWARDS DATA TO ATS WEBSITE FOR SIGNAL PROCESSING FOR A SMALL ANNUAL FEE. G5 RECEIVER IS POWERED BY 120v POWER SUPPLY (PLUG) AND TRANSMIT DATA TO WEBSITE VIA CELLULAR TELEMETRY. THIS AVOIDS NUISANCE CALLS AND IS A NATURAL THEFT DETERRENT.



1. TANKS INSTALLED IN SERIES (EX. GMC 2000(2)) WILL HAVE ALARM INSTALLED IN THE FIRST TANK OUTLET SIDE
2. SINGLE TANKS (WITH BAFFLE) WILL HAVE ALARM INSTALLED ON THE INLET SIDE (BOTH INLET AND OUTLET INSTALLATION IS ALLOWED BUT GT RECOMMENDS INLET)

ALARM IS SHOWN TO BE INSTALLED ON OUTLET SIDE OF TANK

SKU 4660
INTERNAL PART #G5-4653

DWG. TITLE:
SMARTPRO G5 GATEWAY
MONITOR WITH BUILT IN
ALARM OUTLET SIDE
INSTALLATION

PROJECT:

SIZE
A

DRAWING NOT TO SCALE



DWG #: **21-5487-S**

REV. 1