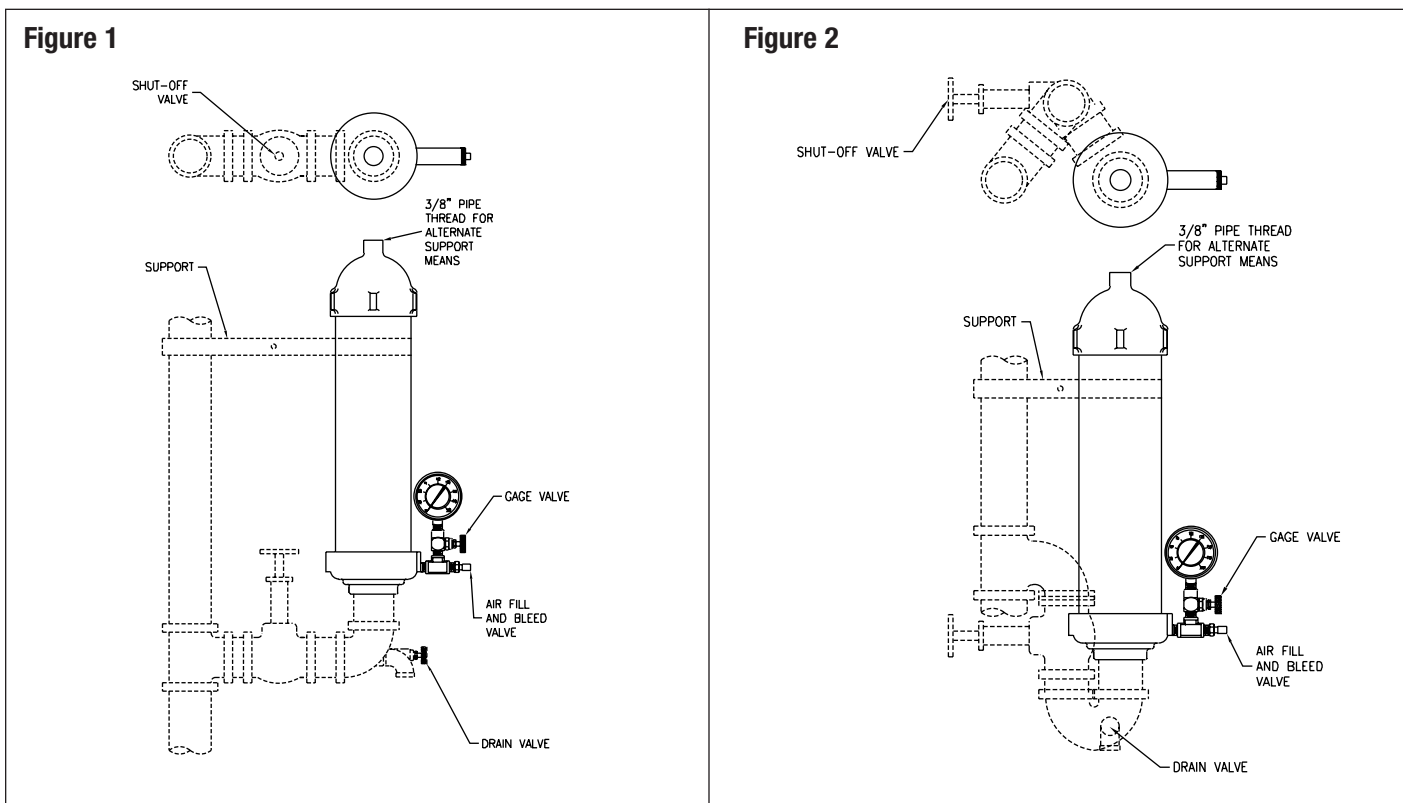


Z1712 ACCUMUTROL SERIES INSTALLATION

1. The Accumutrol should be located upstream from, but close to, the washer or other quick closing valve. It should always be mounted in an upright position with its long axis vertical.
2. Installation should be as shown schematically in Figure 1 or Figure 2. In most cases, an arrangement per Figure 1 is satisfactory. In cases where the system will be drained frequently, the arrangement of Figure 2 is recommended to prevent trapping of excess air in the Accumutrol at each re-filling of the system as this could require occasional bleeding of the excess air from the unit. Thus, Figure 2 arrangement will eliminate the need for more frequent checking of the precharge pressure in the unit when the system is to be drained each night or over weekends. Note the shut-off valve and drain valve are necessary to facilitate precharging and maintenance of the unit.
3. Keep shut-off valve closed and drain valve open until system is ready to be put in operation.
4. Be sure all supply piping is securely anchored. With high flow rates through solenoid or other automatic valves, any accumulator will allow some pressure surge in the line when the valve closes. The Accumutrol should keep this pressure surge below dangerous levels, but even a slight surge will tend to cause movement of the piping. Therefore, the Accumutrol and supply lines in the system must be well supported and anchored to prevent pipe movement and undue stress on pipe and fittings.



NOTE: Dotted lines indicate items by others. Accumutrol shown on vertical supply line. On horizontal supply, mount Accumutrol vertically and use same fitting and valve arrangement.