

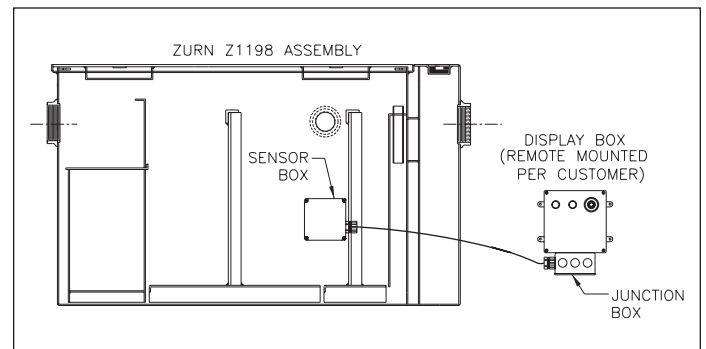
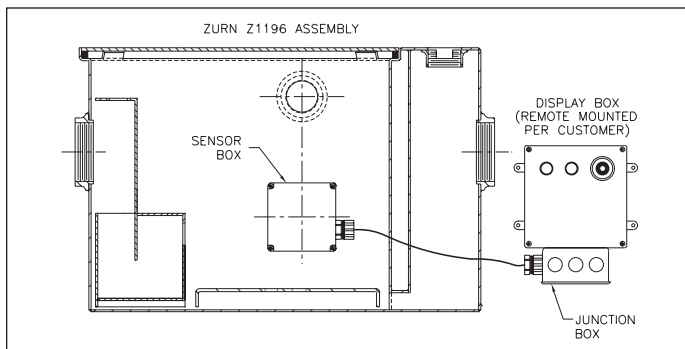
Z1194 OIL LEVEL SENSOR FOR RETROFIT APPLICATIONS Daily Operation and Maintenance

DAILY OPERATION AND MAINTENANCE

1. The interceptor must be cleaned on a regular basis. Volume of debris entering unit will determine the cleaning schedule.
2. The unit should be opened, checked, cleaned of debris, and the sensor wiped off on a monthly basis.
3. **Caution:** If substances other than oil have entered the unit, noxious odor may be present.
4. Once the red light and audible alarm have been activated, the service power should be turned OFF to the unit, the interceptor cover removed, and the accumulated oil removed.
5. **Caution:** There are regulations in all areas regarding the proper disposal of oil and oil products. It is illegal to dispose of this oil in any other manner.
6. Once all the oil has been removed, turn on water to the interceptor and raise the static water level inside the interceptor up over the oil sensor.
7. Once the interceptor has been filled with clean water, replace the cover and turn the service power ON.
8. If all these steps were followed properly, the light on the display should be green and the alarm off.

If you have any problems or concerns, feel free to contact Zurn Industries at 814-455-0921, or contact your local Zurn Representative.

Z1196 and Z1198 OIL INTERCEPTOR WITH OIL LEVEL SENSOR Operation and Maintenance Instructions



Zurn oil interceptors with oil level sensors are efficient appliances designed to separate oil from water.

SAFETY WARNINGS

- **Do not** apply power before you read and complete Start-up List (page 13).
- **Do not** remove electrical enclosure cover when main cover is open and electricity is on.
- **Do not** expose electrical components to water or oil.
- **CAUTION: Do not** apply power until all provisions of Personal Safety Procedure #29CFR 1910.335 and Lockout and Tag Procedure #29CFR 1910.147 are in compliance.

INSTALLATION

The Zurn Oil Interceptors with Oil Level Sensors must be installed in accordance with the recommended oil interceptor installation instructions and in compliance with local codes and regulations.

All Zurn Oil Interceptors with Oil Level Sensors are FOR FLOOR OR RECESSED PIT INSTALLATION ONLY. For pit installation it is required that a drain or sump pump be used to keep the pit relatively dry.

VARIABLES THAT MIGHT AFFECT OPERATION

Operators and users of the Zurn Z1196/Z1198 appliance must be familiar with the variables which may adversely affect the efficiency of the interceptor. These are as follows:

1. **Velocity of Incoming Water** A higher velocity of water will contribute to a more turbulent mixture. This will slow the separation process and thereby reduce efficiency.
2. **Ratio of Oil to Water** The higher the ratio of oil to water, the lower the efficiency.
3. **Specific Gravity (Weight) of the Oil** Oil with a lower specific gravity will rise to the surface much quicker, while oil with a higher specific gravity will have a tendency to linger toward the bottom, taking a longer time to surface.

4. **Possible Presence of Detergents in the System** Oil cutting detergents will break the oil into minute particles that can pass through the interceptor.
5. **Presence of Large Particles Mixed with the Oil** Particles allowed to pass into the interceptor will allow adhesion of the oil to these particles. This reduces efficiency.

Job condition variables may warrant the use of a larger size interceptor than normal sizing indicates. This will help to ensure efficient operation as variables change throughout the operation cycle. Local codes and job conditions prevail and may warrant alternate sizes.

Prior to doing any troubleshooting on a unit which appears to be malfunctioning, make certain that none of the variables which affect the operation of the unit are present.